

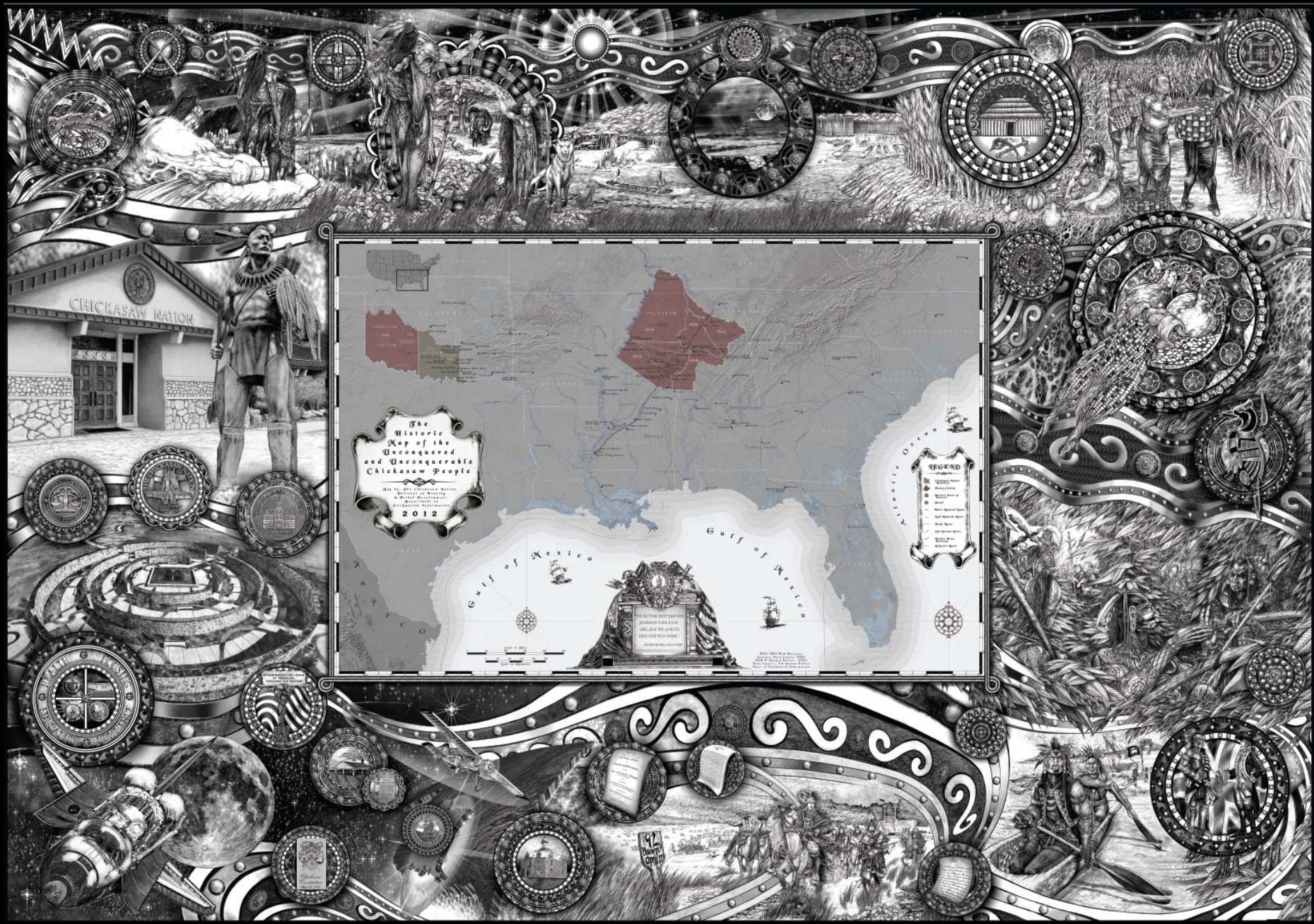


the **Chickasaw Nation**

CONSTRUCTION AND SUPPORT SERVICES DIVISION
GEOSPATIAL INFORMATION (GSI)



"Chickasaw Warrior"



Getting to know GSI



"Chickasaw Warrior"

GSI Facts:

Completed 6,400 data and map requests.

What We Do:

Provide an enterprise GIS system to the decision makers within the tribe.

How We Work:

The Chickasaw Nation GSI Department has 15 employees who maintain and collect tribal, historic and cultural data.

GSI at Work:

We have 50 internal web applications.

- *These web applications service more than 276 users.*
- *All websites are HTML5 and are cross-platform for all applications.*

Getting to know GSI



"Chickasaw Warrior"

*We manage and store **21** terabytes of data.*

*18 SDE databases with a total of **237** gigabytes of data.*

***Nine** ACTIVE SERVERS:*

***Four** database servers*

***One** storage server*

***Four** web map servers*

***Three** servers for general use*

SERVICES:

*VAP01 – **77** map services*

*VAP02 – **101** map services*

*GSI01 – **68** image services*

ArcGIS Online:

***One** Story Map*

***21** Web Maps*

PORTAL:

***Four** web mapping applications*

COLLECTOR APP:

***Four** web mapping applications*

General Land Office (GLO)

Basemaps and Features

Basemap statistics:

Downloaded, cropped and georeferenced 855 maps.

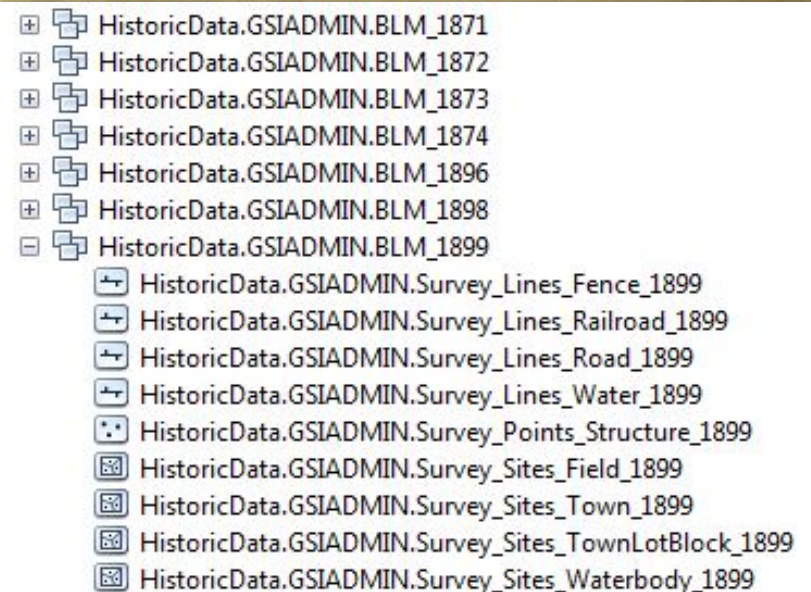
Years: 1871, 1872, 1873, 1874, 1896, 1898 and 1899

Created a mosaic basemap for each year.

GLO feature statistics:

Digitized all: fences, railroads, roads, structures, fields, towns, town lots and blocks, rivers and waterbodies.

Total of **114,919** features.




GLO Website

U.S. DEPARTMENT OF THE INTERIOR


BUREAU OF LAND MANAGEMENT

General Land Office Records

 Search Documents

Reference Center

Support

Shopping Cart 

Search Documents

Search Documents By Type

Search Documents By Location

Search Documents By Identifier

Patents

Surveys

LSR

CDI

Tract Books

Search

Clear Form

Location

State: OKLAHOMA

County: Any County

Land Description

Township: 4 /

Range: 5 / East

Meridian: Any Meridian

Miscellaneous

Survey Type: Any Survey Type

Contract/Group Nr:

Survey Nr:

Surveyor: Any Surveyor

Approved Date: -- to --

Search Surveys

Note: This site does not cover every state. We do have [resource links](#), though, for most states.

To search for surveys

1. Start by selecting the state.

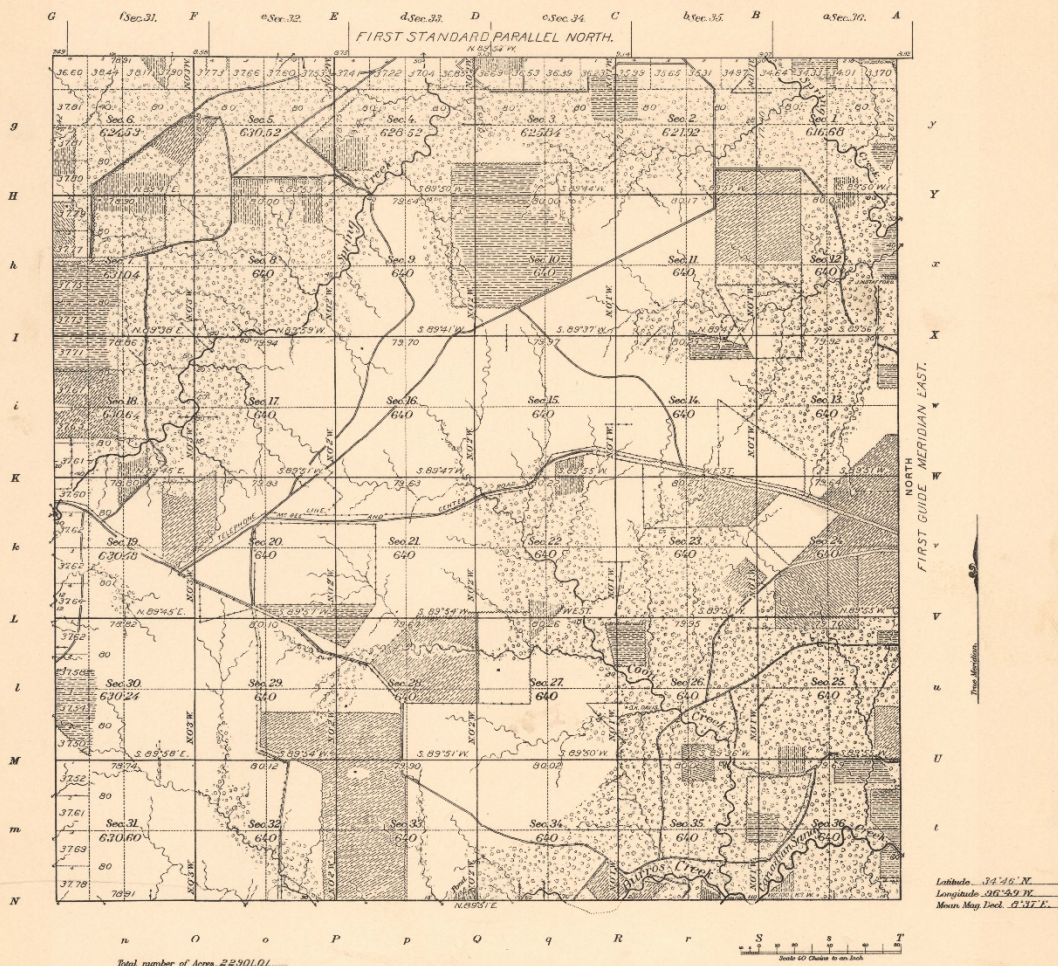
2. **You do not have to fill in all fields**, but provide *at least* one additional field.

3. Click the **Search Surveys** button.

4. You will be switched to the "Search Results" page.

You can get a brief description of what each field means by hovering your mouse over it. You can get more detailed information by checking the [Glossary](#) in the Reference Center. For more tips and help, check out our [Survey Search Overview](#).

Township No. 4 North — Range No. 4 East of the Indian Meridian, Indian Territory.



Survey Designated	By Whom Surveyed	Amount of Survey	When Surveyed
Township lines	G. H. Cooper & J. E. Lewis	59 63 35	Dec. 21 & 27, 1897
Subdivisions		0 44 67	
Connections			

The above Map of Township No. 4 North, of Range No. 4 East of the Indian Meridian, Indian Territory, is strictly conformable to the field notes of the survey thereof on file in this Office, which have been examined and approved.

U. S. Geological Survey
Washington, D. C.
August 10th, 1899

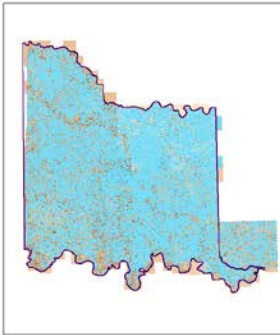
Edward Walcott
Director.

Latitude 34° 45' N.
Longitude 96° 59' W.
Mean Mag. Incl. 53° 32' E.

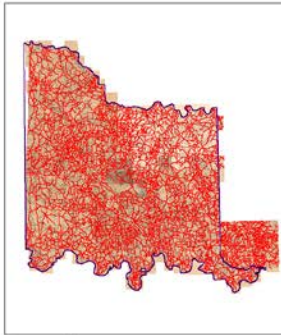
1871 and 1899 Sample Features



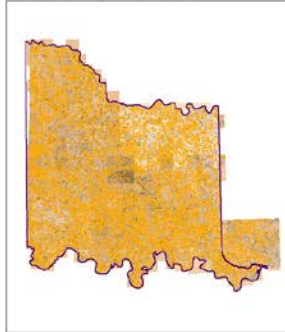
FEATURE: STRUCTURES
STATUS: COMPLETE
COMPLETED: 11,634 FEATURES



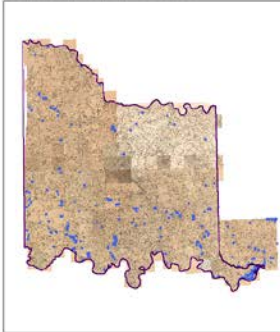
FEATURE: RIVERS AND CREEKS
STATUS: COMPLETE
COMPLETED: 29,907 FEATURES



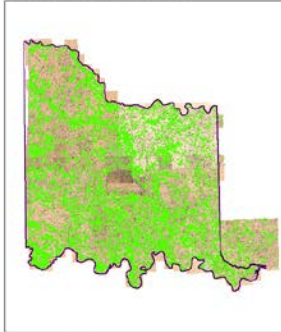
FEATURE: ROADS
STATUS: COMPLETE
COMPLETED: 20,014 FEATURES



FEATURE: FENCES
STATUS: COMPLETE
COMPLETED: 22,598 FEATURES



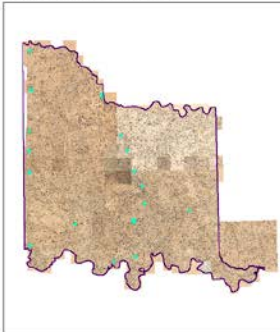
FEATURE: WATER BODIES
STATUS: COMPLETE
COMPLETED: 233 FEATURES



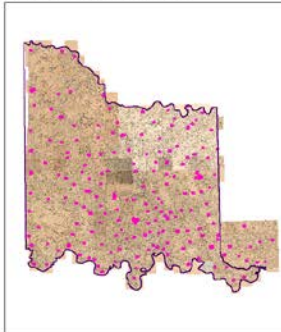
FEATURE: FIELDS
STATUS: COMPLETE
COMPLETED: 8,967 FEATURES



FEATURE: RAILROADS
STATUS: COMPLETE
COMPLETED: 143 FEATURES



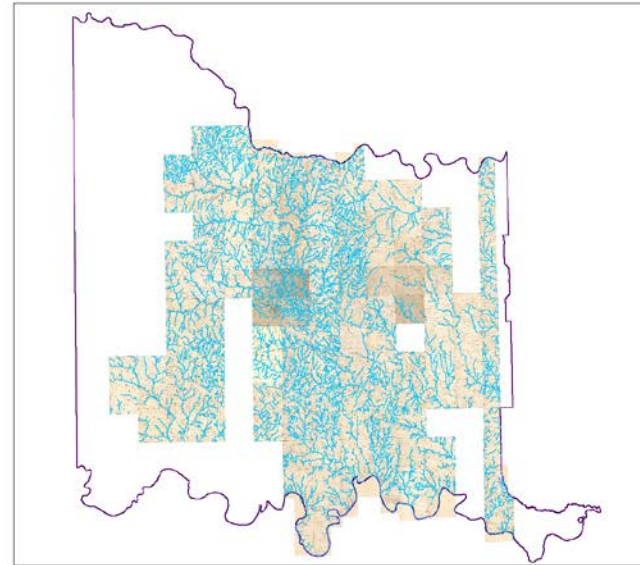
FEATURE: TOWN BLOCKS
STATUS: COMPLETE
COMPLETED: 208 FEATURES



FEATURE: TOWNS
STATUS: COMPLETE
COMPLETED: 182 FEATURES

MAP 50: CHICKASAW NATION / CONSTRUCTION & SURVEY SERVICES /
Geospatial Information / CIVILIAN HALL
SOURCE: BASEMAP - BLM Survey PLATS 1899
LAYER: GEOSPATIAL INFORMATION
Coordinate System: NAD 1983 UTM Zone 16N
NOTE: THIS MAP REPRESENTS A REPRESENTATION OF INFORMATION
AND MAY BE INCOMPLETE. IT DOES NOT REPRESENT EXISTING
BOUNDARY OR AREA. IT IS NOT AN ADJUDICATED SURVEY. NOT A
MAP. DATE: 04/05/2021 1899 DATE: 6/10/2018

1899 BLM SURVEY FEATURES
STATUS: COMPLETE
COMPLETED: 93,886 FEATURES



FEATURE: STRUCTURED
STATUS: COMPLETE
COMPLETED: 241 FEATURES

FEATURE: RIVERS AND CREEKS
STATUS: COMPLETE
COMPLETED: 3,812 FEATURES

FEATURE: ROADS
STATUS: COMPLETE
COMPLETED: 358 FEATURES

FEATURE: FENCES
STATUS: COMPLETE
COMPLETED: 336 FEATURES

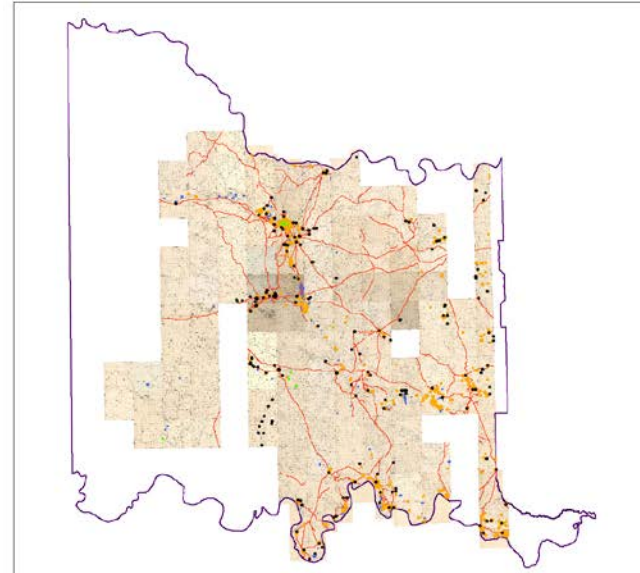
FEATURE: WATER BODIES
STATUS: COMPLETE
COMPLETED: 91 FEATURES

FEATURE: FIELDS
STATUS: COMPLETE
COMPLETED: 337 FEATURES

FEATURE: TOWNS
STATUS: COMPLETE
COMPLETED: 5 FEATURES

FEATURE: TOWN BLOCKS
NO TOWN BLOCKS
FOR 1871 SURVEY

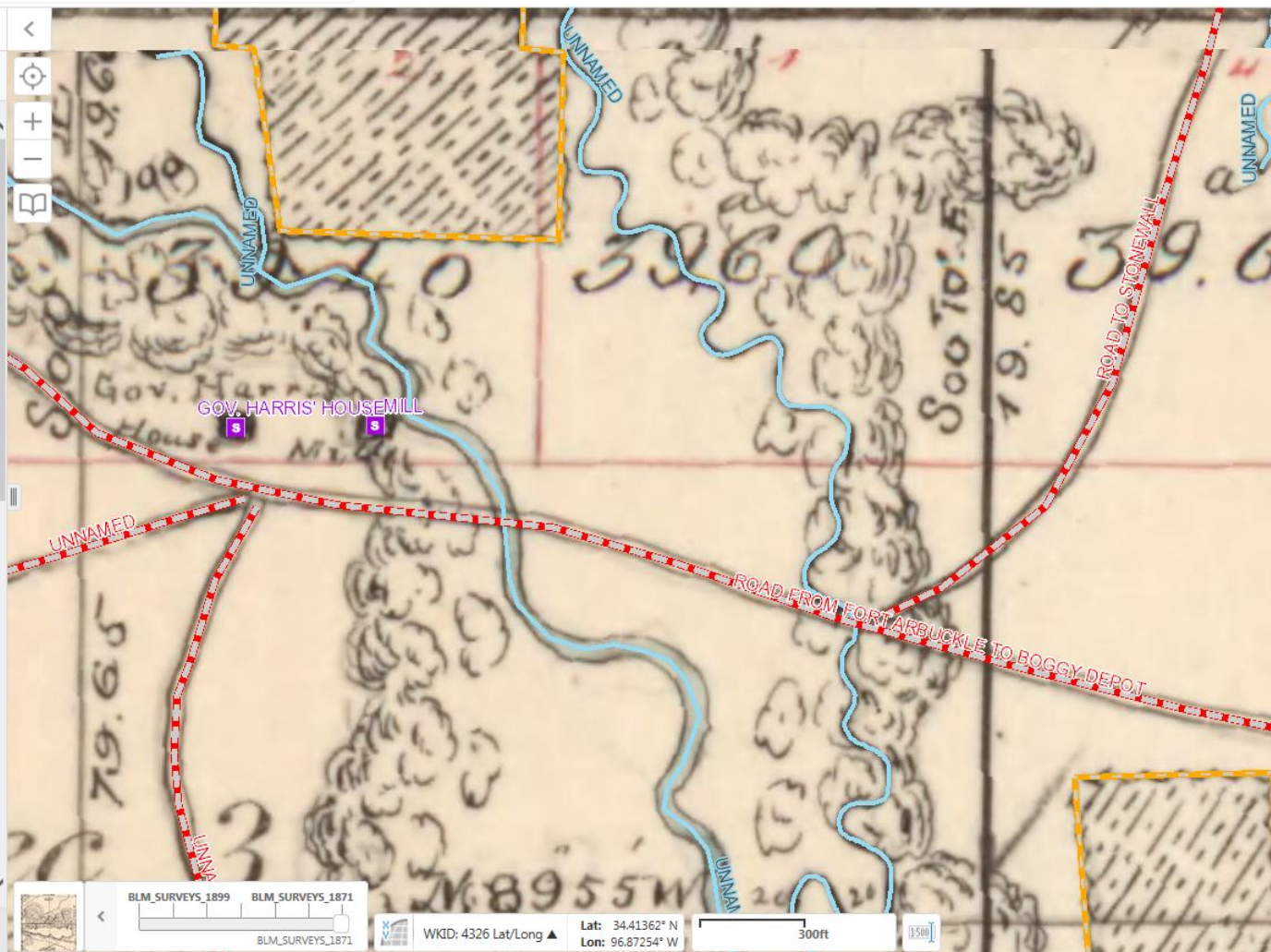
FEATURE: RAILROADS
NO RAILROAD FEATURES
FOR 1871 SURVEY



MAP 50: CHICKASAW NATION / CONSTRUCTION & SURVEY SERVICES /
Geospatial Information / CIVILIAN HALL
SOURCE: BASEMAP - BLM Survey PLATS 1871
LAYER: GEOSPATIAL INFORMATION
Coordinate System: NAD 1983 UTM Zone 16N
NOTE: THIS MAP REPRESENTS A REPRESENTATION OF INFORMATION
AND MAY BE INCOMPLETE. IT DOES NOT REPRESENT EXISTING
BOUNDARY OR AREA. IT IS NOT AN ADJUDICATED SURVEY. NOT A
MAP. DATE: 04/05/2021 1871 DATE: 6/10/2018

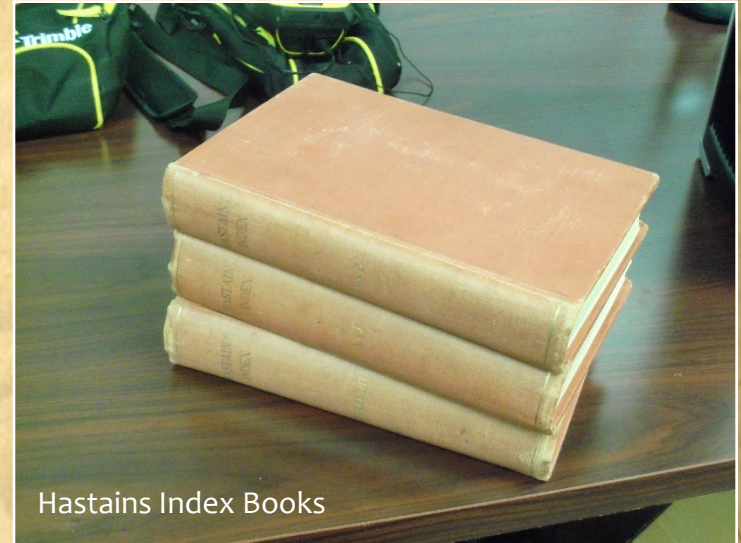
1871 BLM SURVEY FEATURES
STATUS: COMPLETE
COMPLETED: 5,190 FEATURES



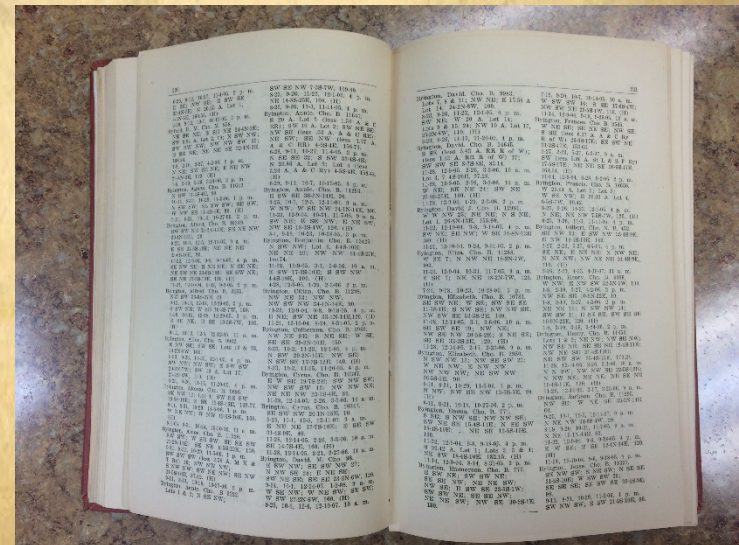


Allotted Land Project

- **Project History:**
 - Hastains Index Books.
 - Project began in summer 2013.
 - Allotted lands can include farmlands and homesteads.



Hastains Index Books



Attributes Associated With Allotments

NE NW, NW SE NW 25-1N-8W, 64
107.03. (H) S
1-8, 2-10, 3-16, 3-24-06. 2 p. m. 36
Doak, Lovie Lee. Chi. B. 4827. 4
SW SE NW; E NW SW; 15
SW NW SW; NW SW SW 12; 64
SE NE SE; NE SE SE 11; Dob
E NE SW 13-1S-5W. 90.
2-2, 2-10, 4-3, 4-9-06. 3 p. m. N
E SW SW; SW SW SW 12; N
E NE NE 14; NW NW 13-1S-5W, 90. S
(H) 2-2
2-2, 2-10, 3-20, 3-26-06. 4 p. m. N
Doak, Lula E. Chi. B. 4861. N
Lot 18; NE SW; 13
W 20 A. Lot 17, 25-1N-8W, 78.51. 24
SE SW NW; NE NW SW; Dob
N NE SW; SE NE SW 13-7N-25E. S
50. 20
4-18, 4-27, 7-16, 7-23-06. 11 a. m. 24
W 20 A. Lot 17; NE SW; Lot 18, 24; S
S SE NW; SW 10 A Lot 16, 20
25-1N-8W, 108.61. (H) 24
4-18, 4-27, 6-11, 6-16-06. 10 a. m. Dob
Doak, Vivian Nail. Chi. N. B. 56. N
SW SW NW 1; NE NE NE; E
SW SW SE 11; NE NW; 84
SW SE NE 14; W NE SW; L
NW SE SW 12-1S-5W, 110. W
2-27, 2-23, 5-27, 6-7-07. 4 p. m. 8-2
W 20 A. Lot 2; Dob

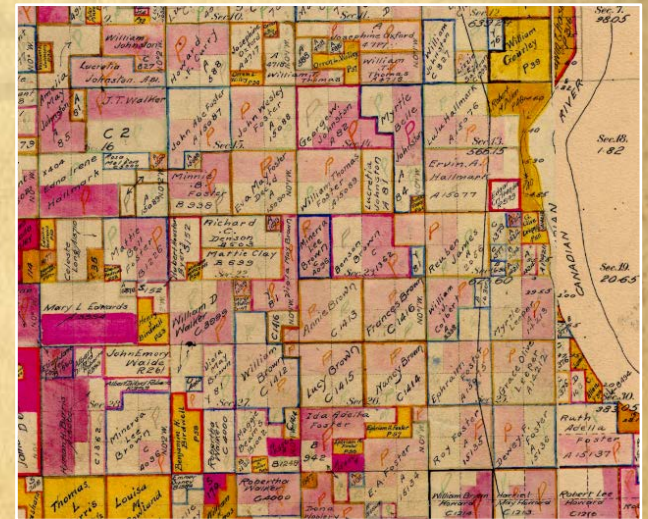
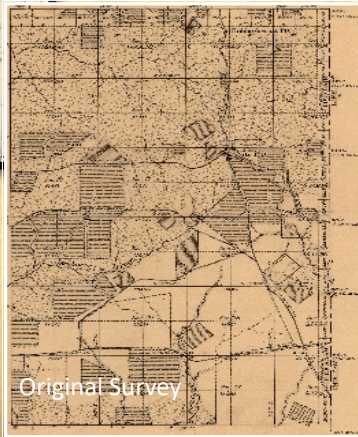
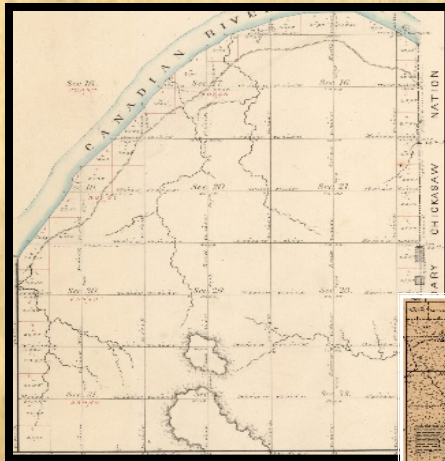
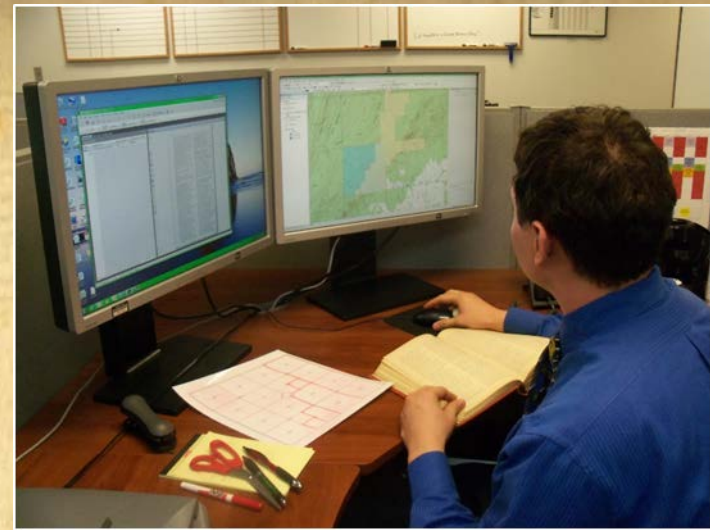
Copyright, 1910,
By E. HASTAIN.
All rights reserved.

Abbreviation.	Explanation.
(H).....	Homestead.
W.....	West Half.
N.....	North Half.
S.....	South Half.
E.....	East Half.
NW.....	Northwest Quarter.
SW.....	Southwest Quarter.
NE.....	Northeast Quarter.
SE.....	Southeast Quarter.
Cho. B.....	Choctaw by Blood.
Chi. B.....	Chickasaw by Blood.
Cho. F.....	Choctaw Freedman.
Chi. F.....	Chickasaw Freedman.
Cho. N. B.....	Choctaw Newborn.
Chi. N. B.....	Chickasaw Newborn.
Cho. M., or Int. M.	Choctaw by Inter-marriage.

Abbreviation.	Explanation.
Chi. M., or Int. M.	Chickasaw by Inter-marriage.
M. Cho. F.....	Minor Choctaw Freedmen.
M. Chi. F.....	Minor Chickasaw Freedmen.
M. Cho.....	Minor Choctaw.
M. Chi.....	Minor Chickasaw.
Miss. Cho.....	Mississippi Choctaw.

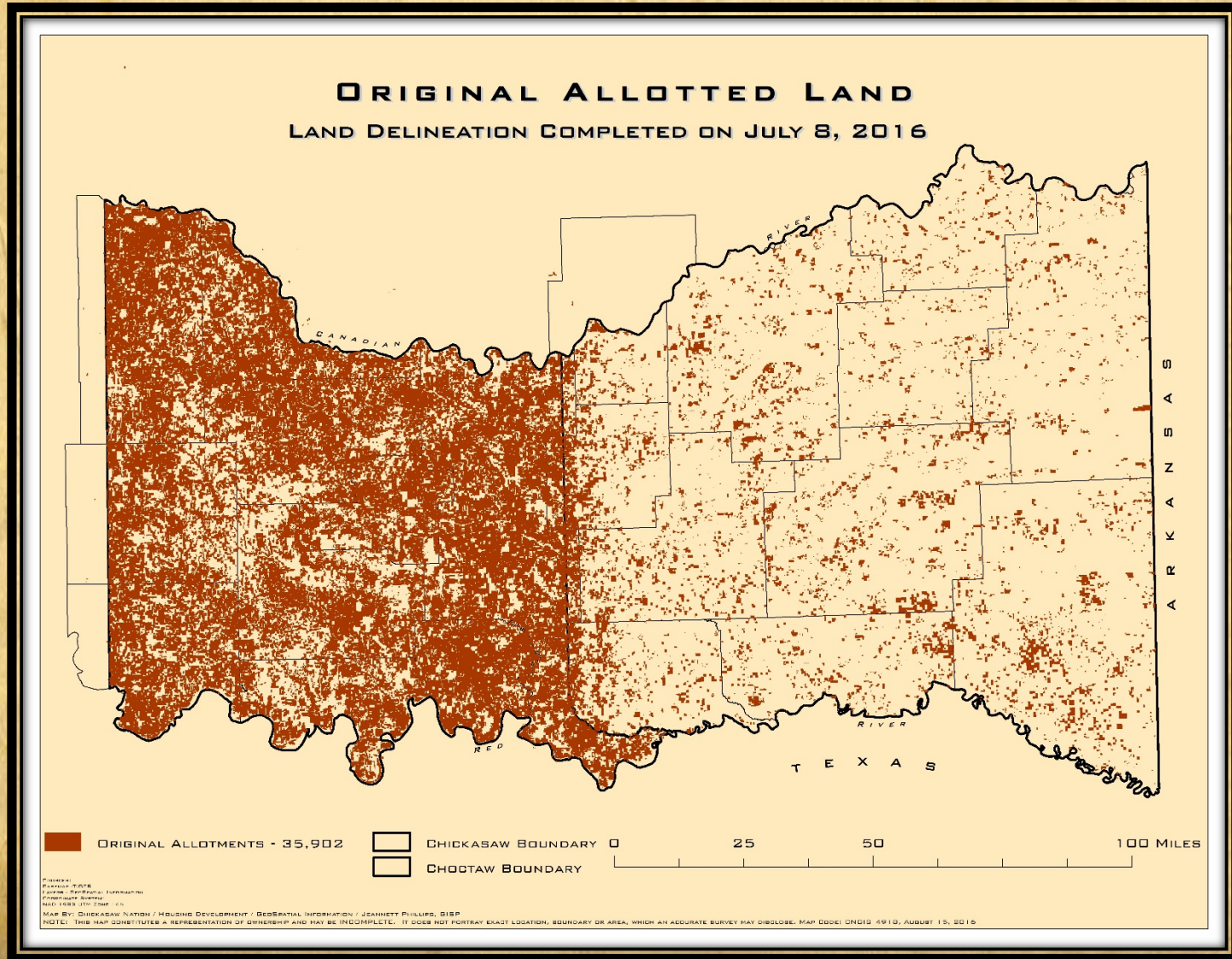
Dates following description of allotments are: 1st, date deed signed by Choctaw Chief; 2nd, date deed signed by Chickasaw Chief; 3rd, date approved by Secretary; 4th, date filed for record, in the order named.

- General Land Office (GLO)
plat maps
- Bureau of Indian Affairs (BIA)
maps



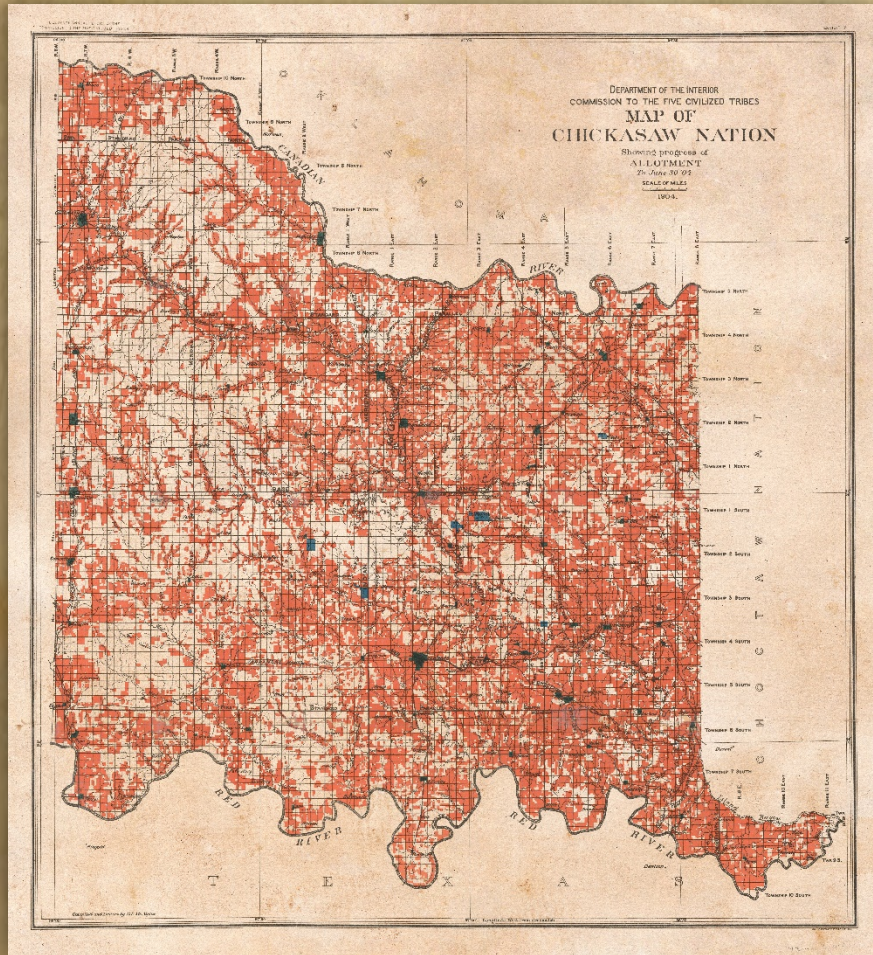
Delineation of Allotted Land

42,083 polygons have been delineated.

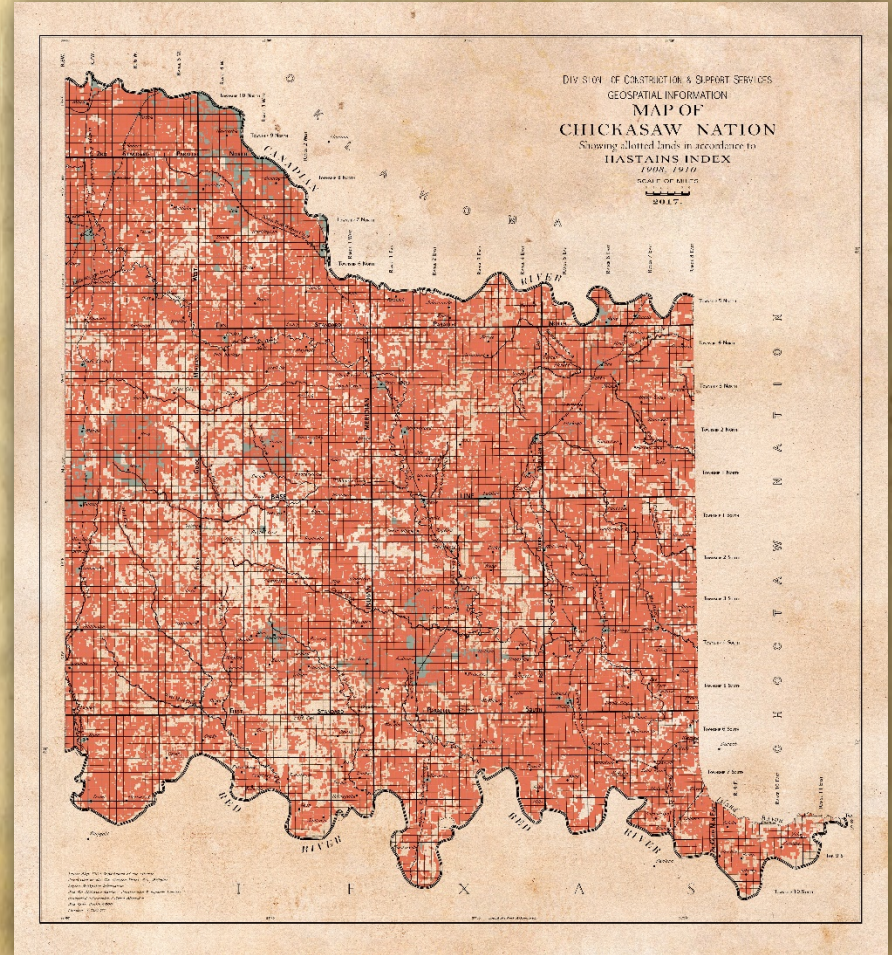


Reproduction of Historic Allotted Lands Map

Historic 1904 Map



2017 Reproduction



Historic Aerial Photographs from USGS

Historic Aerial Statistics to date:

- Aerial photographs downloaded: 4,154
- Aerial photographs cropped: 2,417
- Aerial photographs georeferenced: 2,000
- Years: 1960, 1961, 1962, 1963, 1964, 1965, 1971, 1973, 1974, 1975, 1976, 1984 and 1995

A mosaic basemap will be created for each year as they are completed.



EarthExplorer - Home

Page Expires In 1:59:58

Home 1 New System Message Save Criteria Load Favorite ▾ Manage Criteria

Item Basket (0) Colton.Lancaster ▾ RSS Feedback Help

Search Criteria Data Sets Additional Criteria **Results**

4. Search Results

If you selected more than one data set to search, use the dropdown to see the search results for each specific data set.









Show Result Controls ▾

Data Set Click here to export your results »

NAPP ▾

« First » Previous 1 ▾ Next » Last »

Displaying 1 - 10 of 99

1  Entity ID:N10NAPPW08450243
Coordinates:34.6875 , -96.46875
Acquisition Date:21-FEB-95
      

2  Entity ID:N10NAPPW08450244
Coordinates:34.71875 , -96.46875
Acquisition Date:21-FEB-95
      

3  Entity ID:N10NAPPW08450245
Coordinates:34.75 , -96.46875
Acquisition Date:21-FEB-95
      

4  Entity ID:N10NAPPW08450246
Coordinates:34.78125 , -96.46875
Acquisition Date:21-FEB-95
      

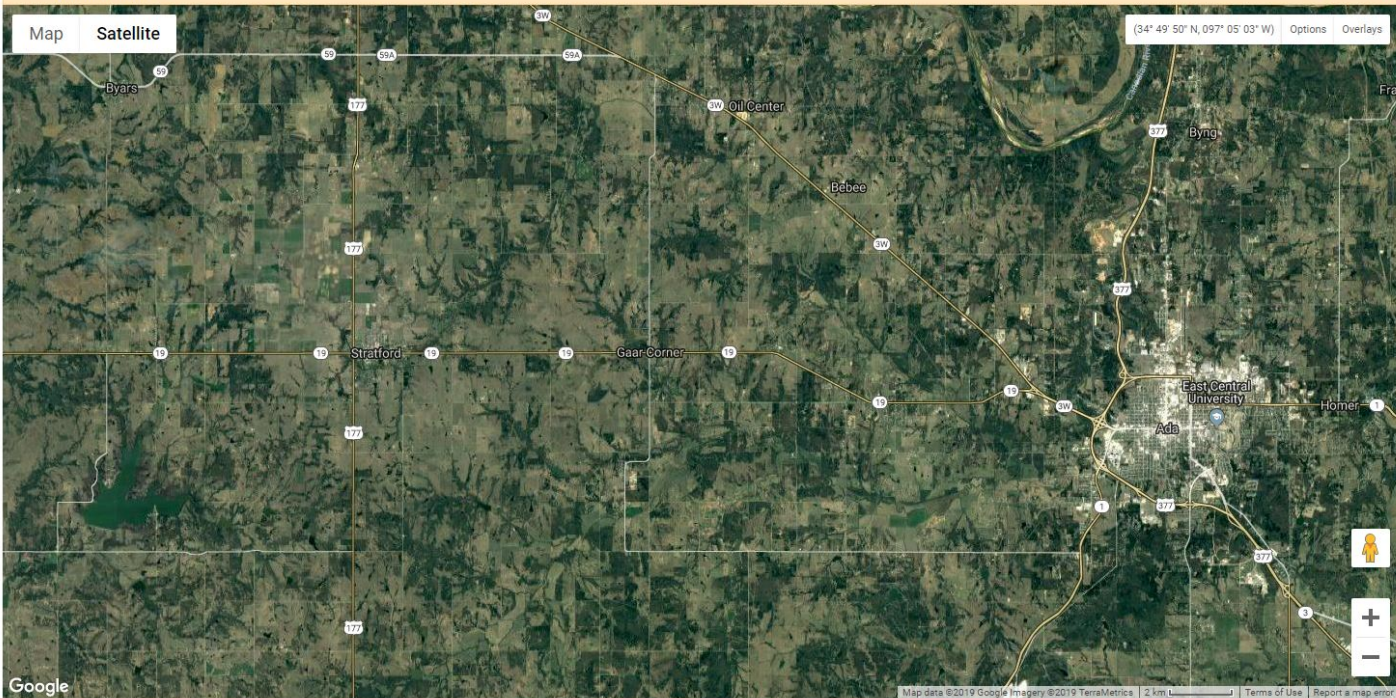
5  Entity ID:N10NAPPW08450247
Coordinates:34.8125 , -96.46875
Acquisition Date:21-FEB-95
      

View Item Basket »

Submit Standing Request »

Search Criteria Summary (Show)

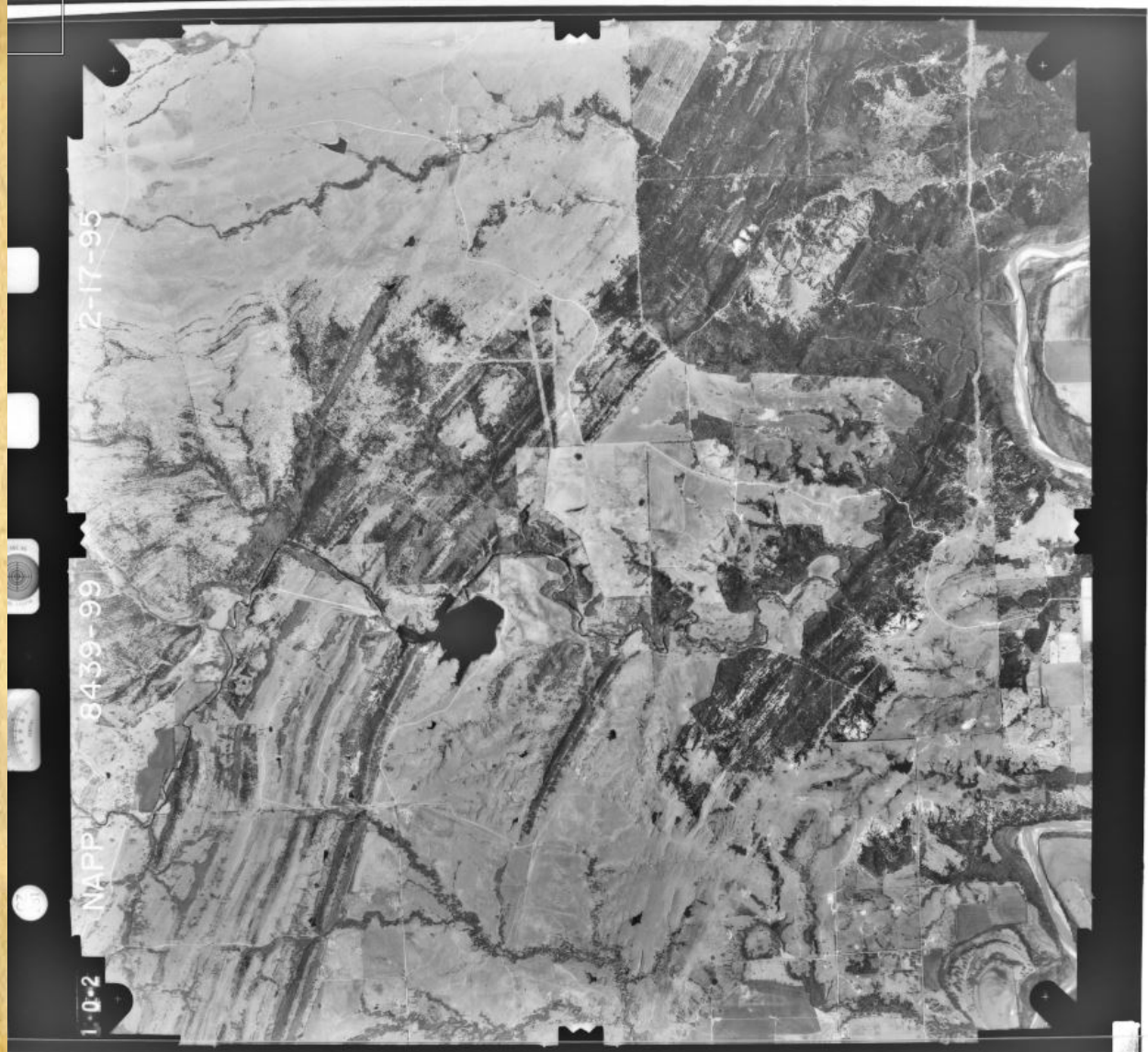
Clear Criteria



The up-to-date Google map is not for purchase or for download; it is to be used as a guide for reference and search purposes only.

DOI Privacy Policy | Legal | Accessibility | Site Map | Contact USGS

U.S. Department of the Interior | DOI Inspector General | White House | E-gov | No Fear Act | FOIA



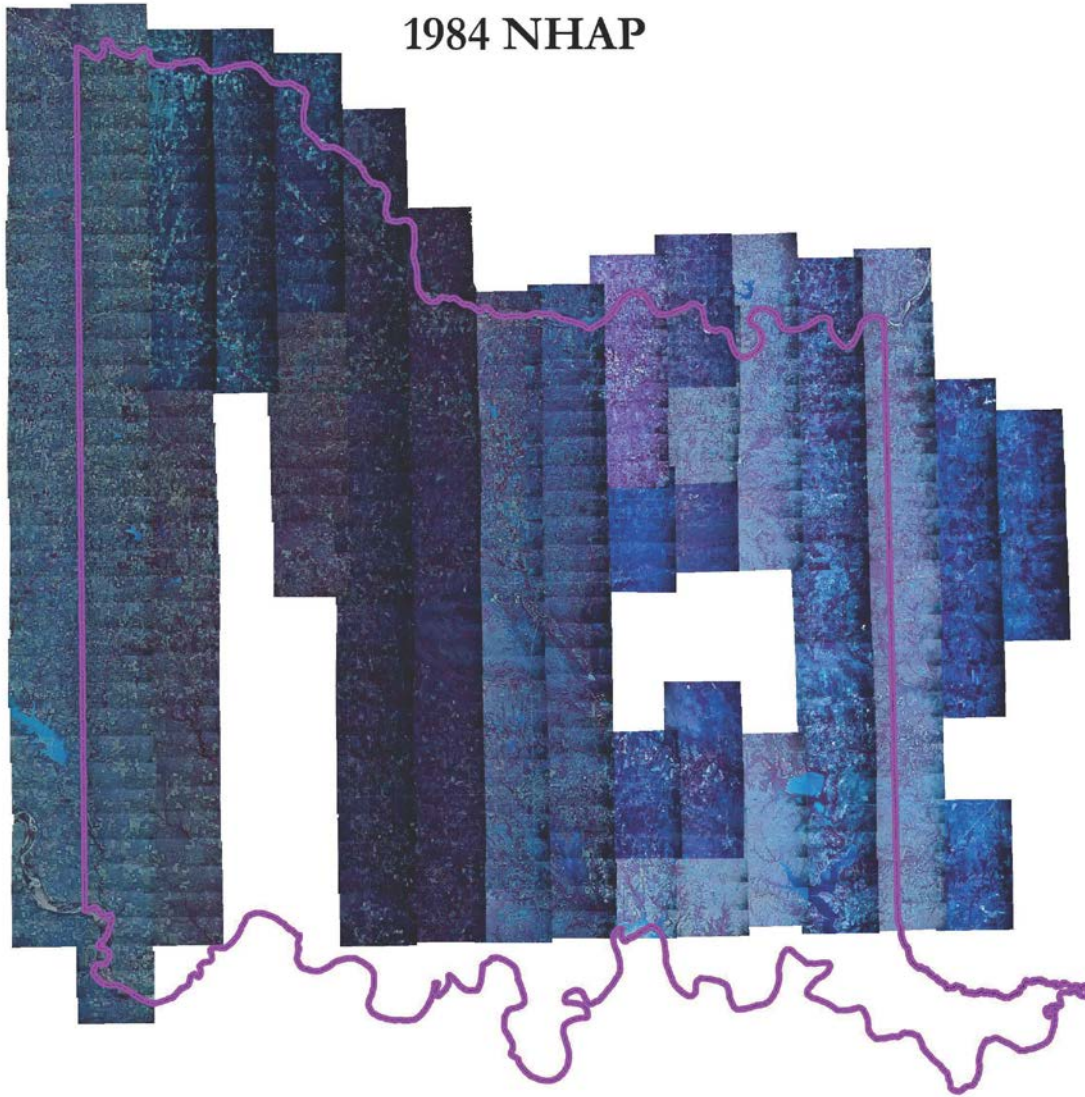
2-17-95

8439-99

1-0-2

NAPP

1984 NHAP



Chickasaw Nation Drone Team

Remote Pilot Airmen Certificate (Part 107)

Greg Skinner – Certified federal land surveyor

- Remote pilot airmen certified since March 8, 2018.

Stephen West – GIS specialist

- Remote pilot airmen certified since Sept. 14, 2018.

Colton Lancaster – GIS intern

- Remote pilot airmen certified since Sept. 12, 2017.

Statistics on all drone flights:

Missions flown- **64**

Total flight time- **45.9** hours

Area flown- **12,738** acres/**19.9** square miles

eBee⁺



UAVs

Fixed Wing eBee Plus Multi-Rotor DJI Mavic Pro

eBee Plus

- RTK capable fixed-wing UAV
- Weight of 1.5 lb.
- Flight time up to 45 minutes
- Can capture areas up to 4.6 square miles
- 20 megapixel, 1-inch camera

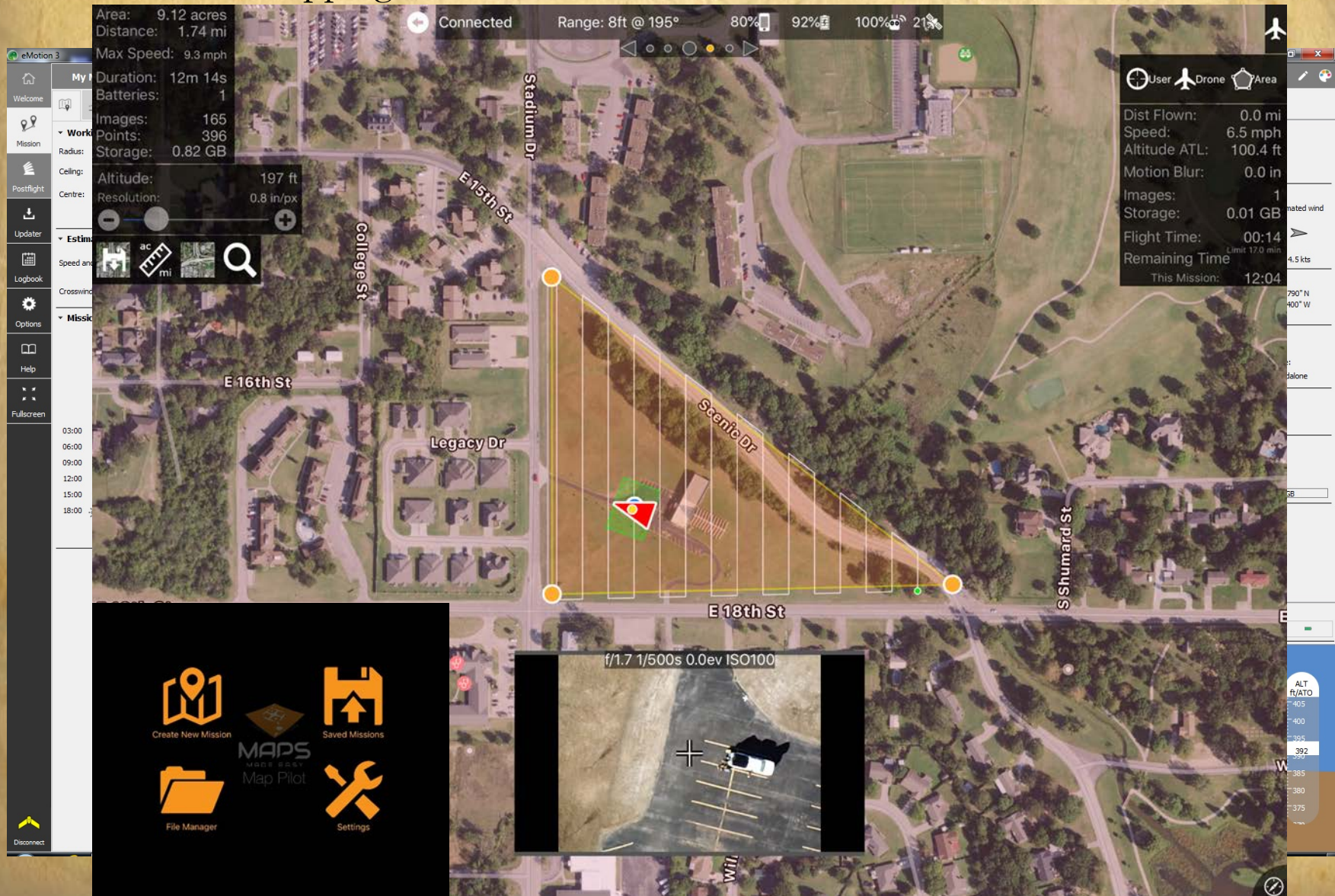


DJI Mavic Pro

- Quad Copter
- Weight of 1.64 lb.
- Flight time up to 27 minutes
- Can capture areas up to 25 acres
- 12 megapixel, 1/2 inch camera

Map Pilot – IOS Mapping UAS Software purchased from the App Store for automated mapping missions for the DJI Mavic Pro platform.

Emotion3 – Mapping UAS software provided with the eBee Plus UAV platform for automated mapping missions.



Comprehensive Event Planning



Pre-Event

Event Organization



Event Set Up









the **Chickasaw Nation**

ANY QUESTIONS?

Corey Gillum
GIS manager
GeoSpatial Information
Corey.Gillum@Chickasaw.net

Faith Adams
GIS senior database administrator
GeoSpatial Information
Faith.Adams@Chickasaw.net