

ArcGIS Enterprise



NewEdge
SERVICES, LLC

By:
Gary Parker



Introducing NewEdge

- Founded in May 2015
 - Brad Daugherty & Laura Carr
- 11 Employees – Full and Part Time
- HQ in Frisco, TX
 - Offices in Houston & Colorado
- Full Suite of GIS & Asset Management Services
 - Assessments, Data Collection
 - Full Implementations & training
 - Cloud Hosting



What is ArcGIS Enterprise

Web Adaptor

Portal for ArcGIS

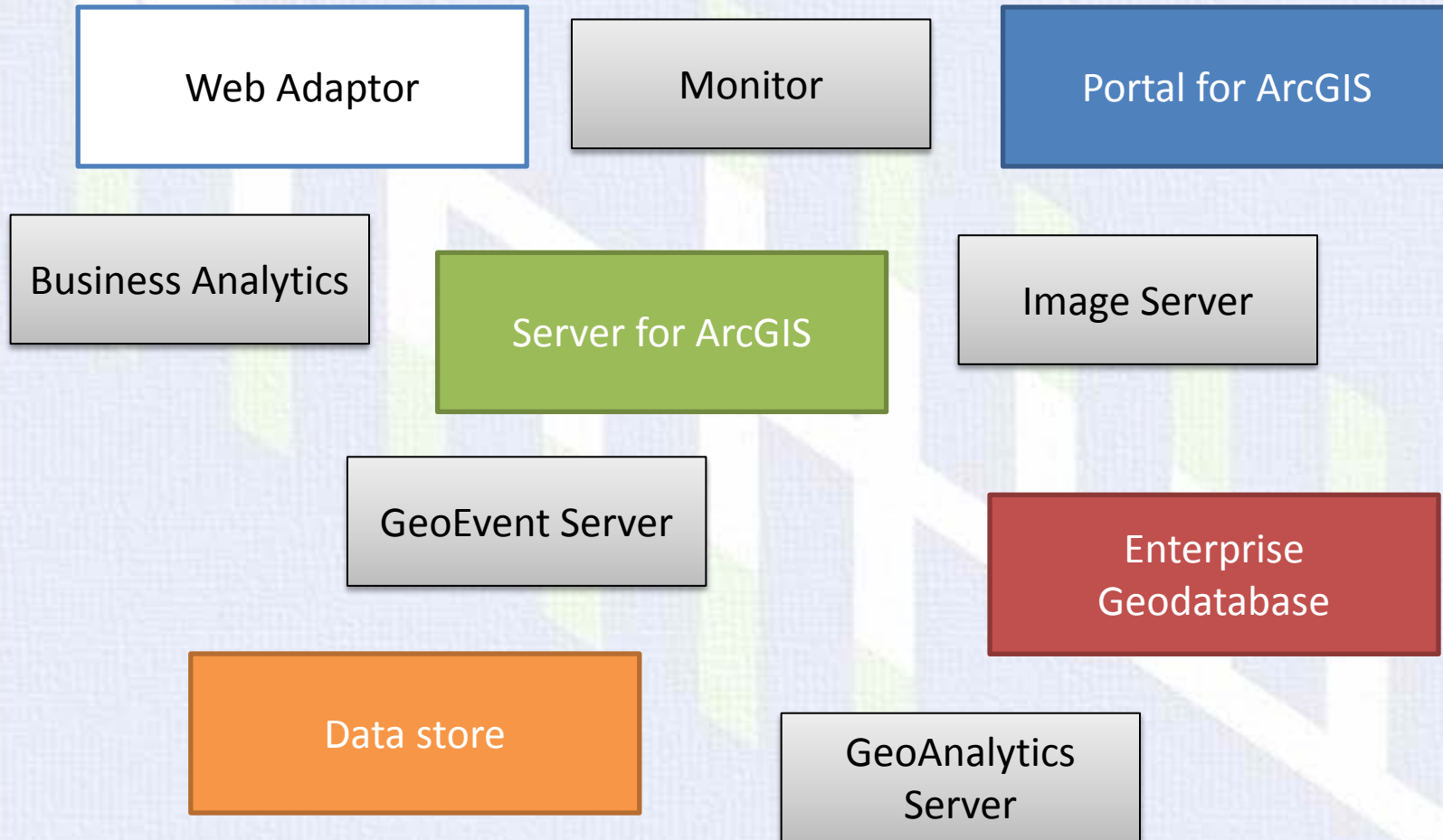
Server for ArcGIS

Enterprise
Geodatabase

Data store



What is ArcGIS Enterprise

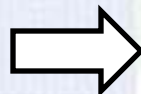




What is ArcGIS Enterprise

Core Components

Portal for ArcGIS



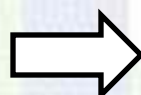
Centralized Identity Store. Responsible for creating and organizing users, their permissions and organizations items.

Server for ArcGIS



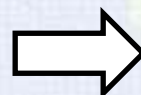
The main power house of the base deployment. Handles all the processing. Essentially gets data and serves to web applications. Can have different roles, GeoEvent, Image etc.

Enterprise
Geodatabase



Your main data storage including versioning, multi editor, data management for your entire organization.

Data store



ESRI data storage solution based on PostgreSQL. There are 3 different database types for various workloads; Relational, Tile Cache and Spatiotemporal.



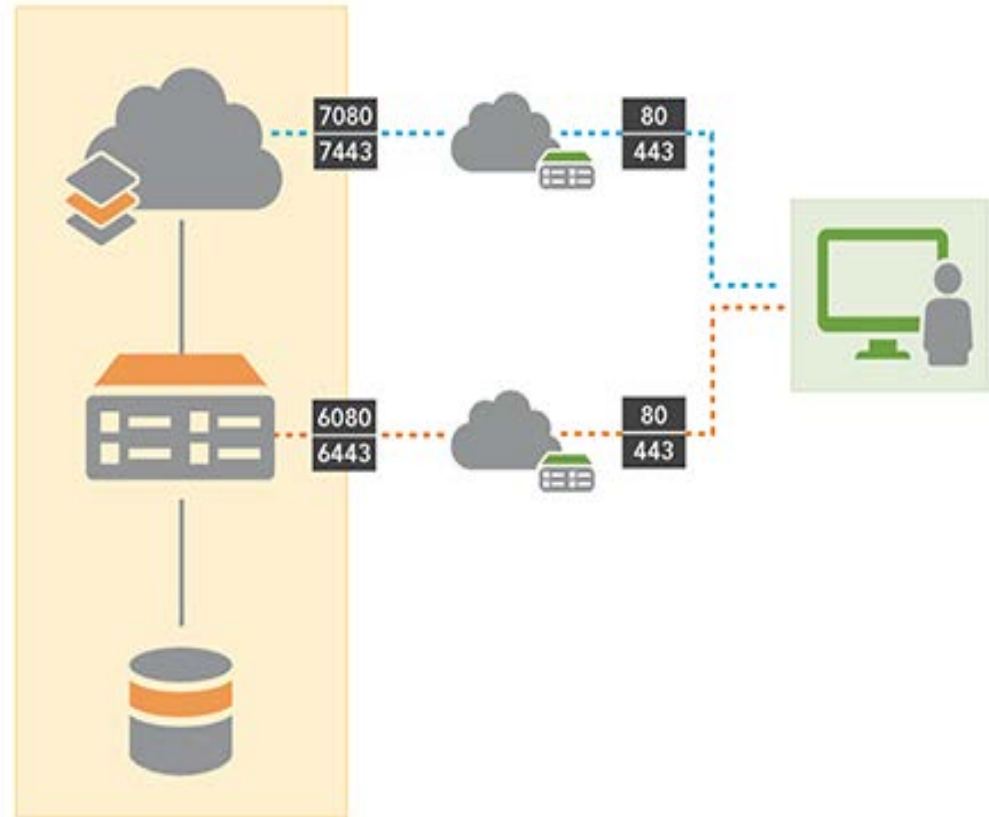
Base Deployment

Portal for ArcGIS

Server for ArcGIS

Enterprise
Geodatabase

Data store





START -Test and Dev

- Great opportunity to gain understanding
- Deploy in virtual / Cloud environment
 - Do not do test to Production, keep separate
- Cloud templates make it very simple



Planning your deployment

- Important to plan; web GIS, connected through URLs.
- Growing and Scaling
 - Clustering; what and why
 - One 'web' with multiple servers
 - Highly available system
 - Increase capacity
 - ArcGIS Server has limit based on processing cores
 - Portal, ArcGIS Server cluster capable
 - Datastore: clustered and primary / secondary



Planning your deployment

- Design for high availability from the start
 - 1 Server, 1 Portal, 3 Datastore
 - Network shares for Portal & Server directories
 - Network shares for working directories
 - Fileshare server or Enterprise Database
- Isolate workloads
 - Separate tiers;
 - Portal
 - Server
 - Database
 - Separate Extensions;
 - Imager Server
 - GeoEvent Server
 - GeoAnalytics Server



Final Thoughts

- Keep the WebAdaptor named 'ArcGIS'
- All tiers natively SSL (HTTPS), Install 3rd party SSL Certificate at WebAdaptor
- Run everything under a domain account (Active Directory)

QUESTIONS?

Come by our booth

