

Democratizing GIS in Government

strategies for distributing spatial workflows



jcarmona@mckinneytexas.org
[linkedin.com/in/jordancarmona](https://www.linkedin.com/in/jordancarmona)

Overview

- Types of People, Types of Tech (10 minutes)
- Approaching Needs-Analyses (20 minutes)
- Implementing (20 minutes)
 - Data Collection
 - Field Verification
 - Attribute Updates



Types of People, Types of Tech

Types of People, Types of Tech

- Likes to Learn

- Task Oriented

- Job First

Hey Reddit! People have always commented about my handwriting. Hopefully you guys enjoy it just as much, if not more!

a b c d e f g h i j k l m n o p q r s t u v w x y z
A B C D E F G H I J K L M N O P Q R S T U V W X Y Z
1 2 3 4 5 6 7 8 9

The quick brown fox jumps over the lazy dog.
THE QUICK BROWN FOX JUMPS OVER THE LAZY DOG.

Sometimes, my writing varies depending on how I'm feeling, but this is the most consistent one.

Lazy/Rushed - *The quick brown fox jumps over the lazy dog.*

Tired - *The quick brown fox jumps over the lazy dog.*

Cursive - *The quick brown fox jumps over the lazy dog.*

↳ this needs more practice.

Small - *The quick brown fox jumps over the lazy dog.*

Large - *The quick brown fox jumps over the lazy dog.*

Wide - *The quick brown fox jumps over the lazy dog.*

Narrow - *The quick brown fox jumps over the lazy dog.*

I could also go off lines, but it starts looking messy. (Sorry!)

You may notice variations in my y and y and Y and Y, and W and W w, etc. I am a very indecisive person. I hope to change that.

PS: Yes, people do request for me to write their cards/notes (Mother's Day, BIRTHDAYS, *Wedding Thank You Notes* and etc.) I can't wait to be able to write my own wedding invitations, if I ever find someone to get married to, that is.

I could also imitate fonts if I tried hard enough. (And signatures too.)

See you around, Reddit! /u/KoyukiDemon

Bye!

WRITTEN WITH A
PILOT G-TEC-3

Types of People, Types of Tech

- ArcGIS Ecosystem
- Excel
- Pen and Paper



Types of People, Types of Tech

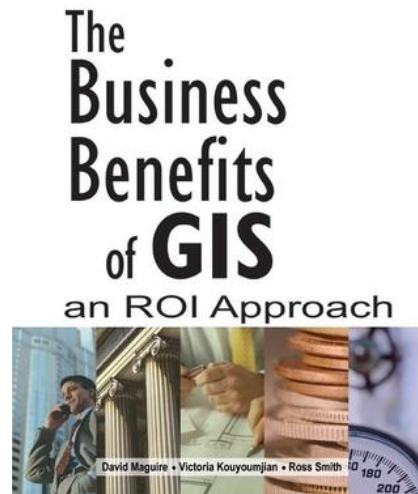
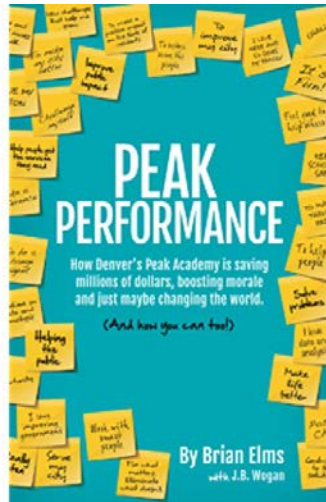
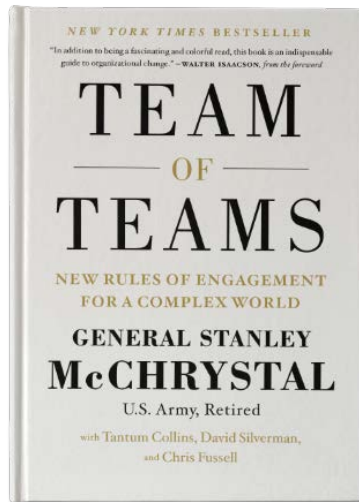
- ArcGIS Ecosystem
- Excel
- Pen and Paper



Approaching Needs Analyses

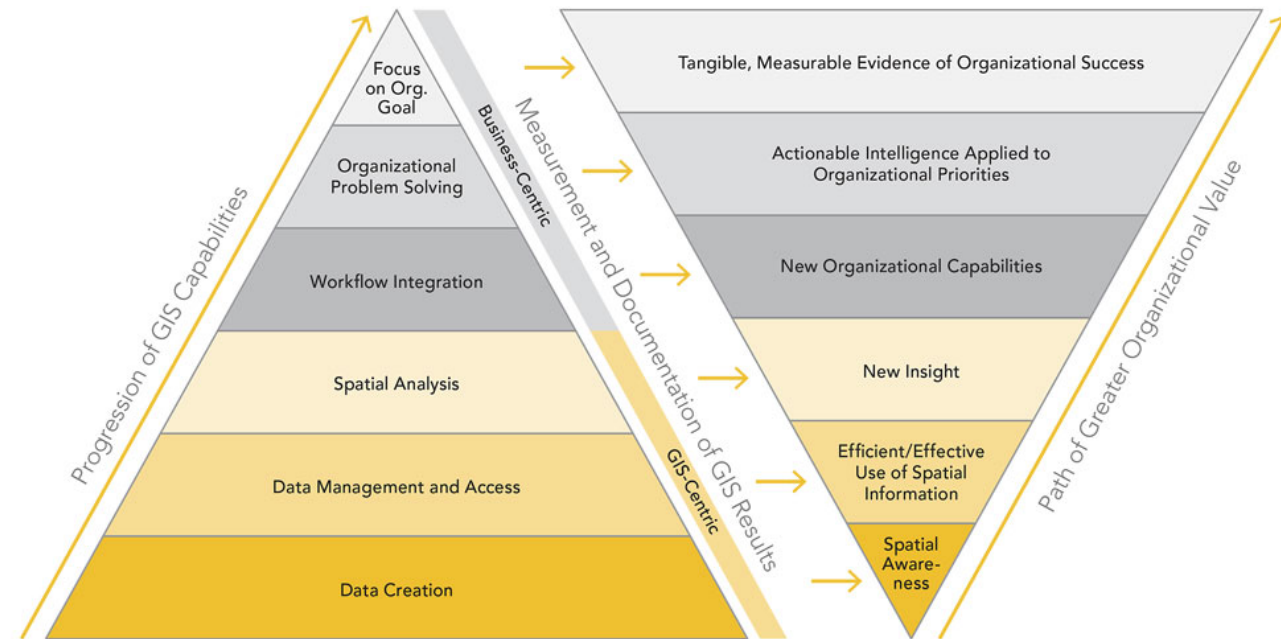
Approaching Needs Analyses

- www.governmentresource.com
- 10 in 10 Update on Leadership and Innovation
- Some Reading Recommendations:



Wade Kloos

Outcomes



GIS Activities

Presentations

- Set up a GIS Kick-Off meeting
 - Historic Timeline for *your* GIS
 - State of the ~~Union~~ GIS
 - Ask about current usage
 - Ask about “pain points” / “what hurts?”
 - Available new technology / capabilities
 - Offer ideas for analysis



Approaching Needs Analyses

- Follow Up with Managers
- Reconvene as a Group

GIS Kick-Off

Needs, Wants, and Etc.



Discussions

- Follow Up with Managers
 - First, 1-on-1 with Director
 - Establish their vision for their department
 - Gain authorization to spend time with employees
 - Small group meetings with managers and supervisors
 - Identify issues
 - Familiarize with workflow

Approaching Needs Analyses

- Reconvene as a Group



THE FOX AND THE GRAPES,

A FAMISHED Fox saw some clusters of ripe black grapes hanging from a trellised vine. She resorted to all her tricks to get at them, but wearied herself in vain, for she could not reach them. At last she turned away,

Discussions

- Reconvene as a Group

- Identified Problems

- Proposed Solutions

- Project Ideas

Approaching Needs Analyses

We don't know what we don't know

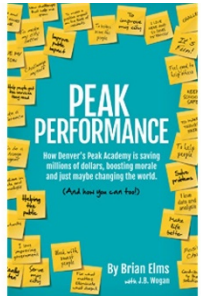
What's the Point?

Approaching Needs Analyses

- Strong Partnerships

“Buy-in is something you do for an investment in the future. And the goal in the end is to ‘cash out’ ... Stay away from buy-in. Instead, work with people by creating a connection and a relationship. When your team members are connected and you have a trusting relationship you don’t have to search for the elusive buy-in.”

-Peak Performance



- Willing Participants

- Strong democracies require participation



Implementing

Democratizing GIS

- Who gets to participate?
- Who benefits?
- What are your resources?

Implementing

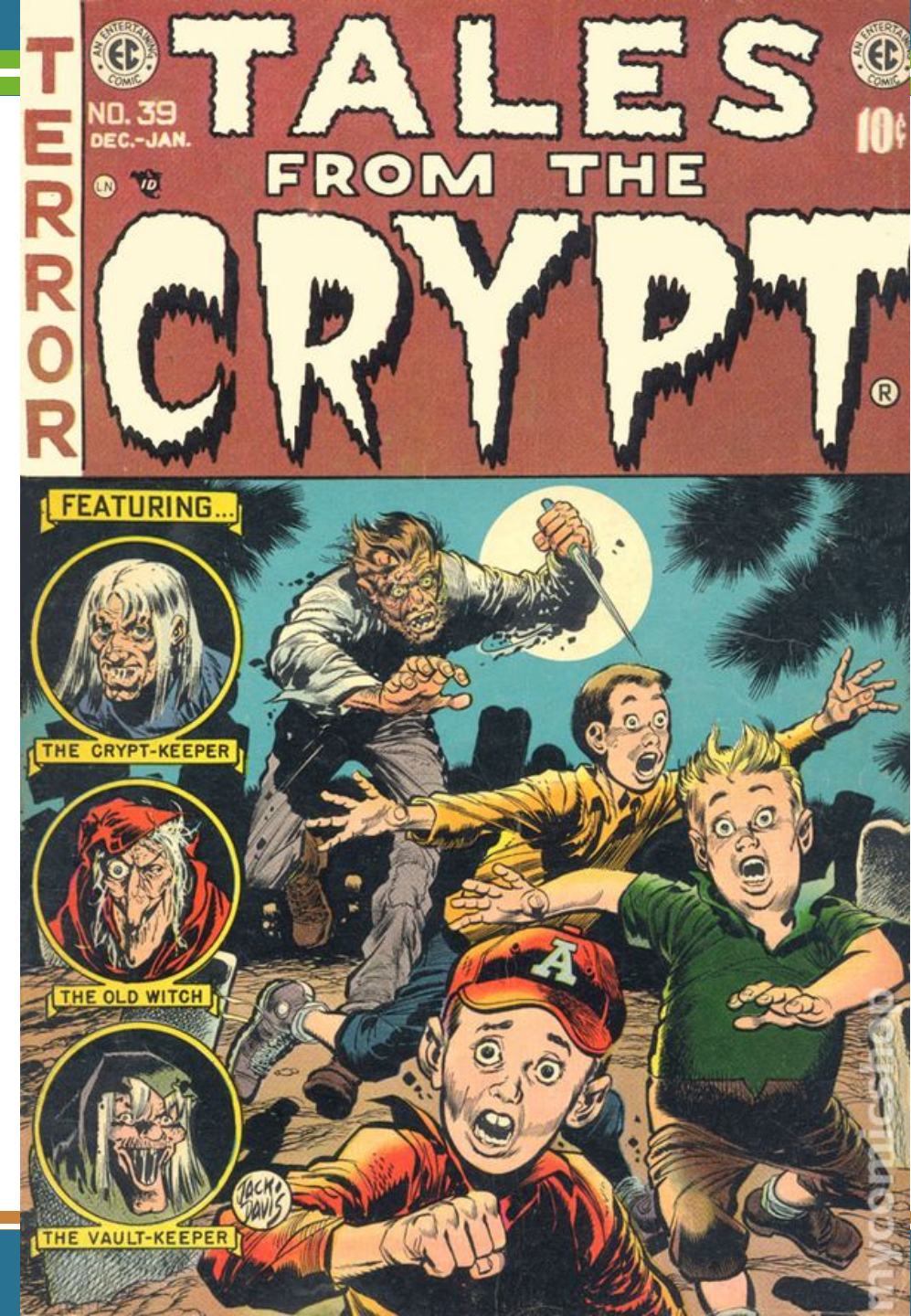


Implementing

Suite Numbers

Capital Improvement Projects

Permit Verification



Implementing

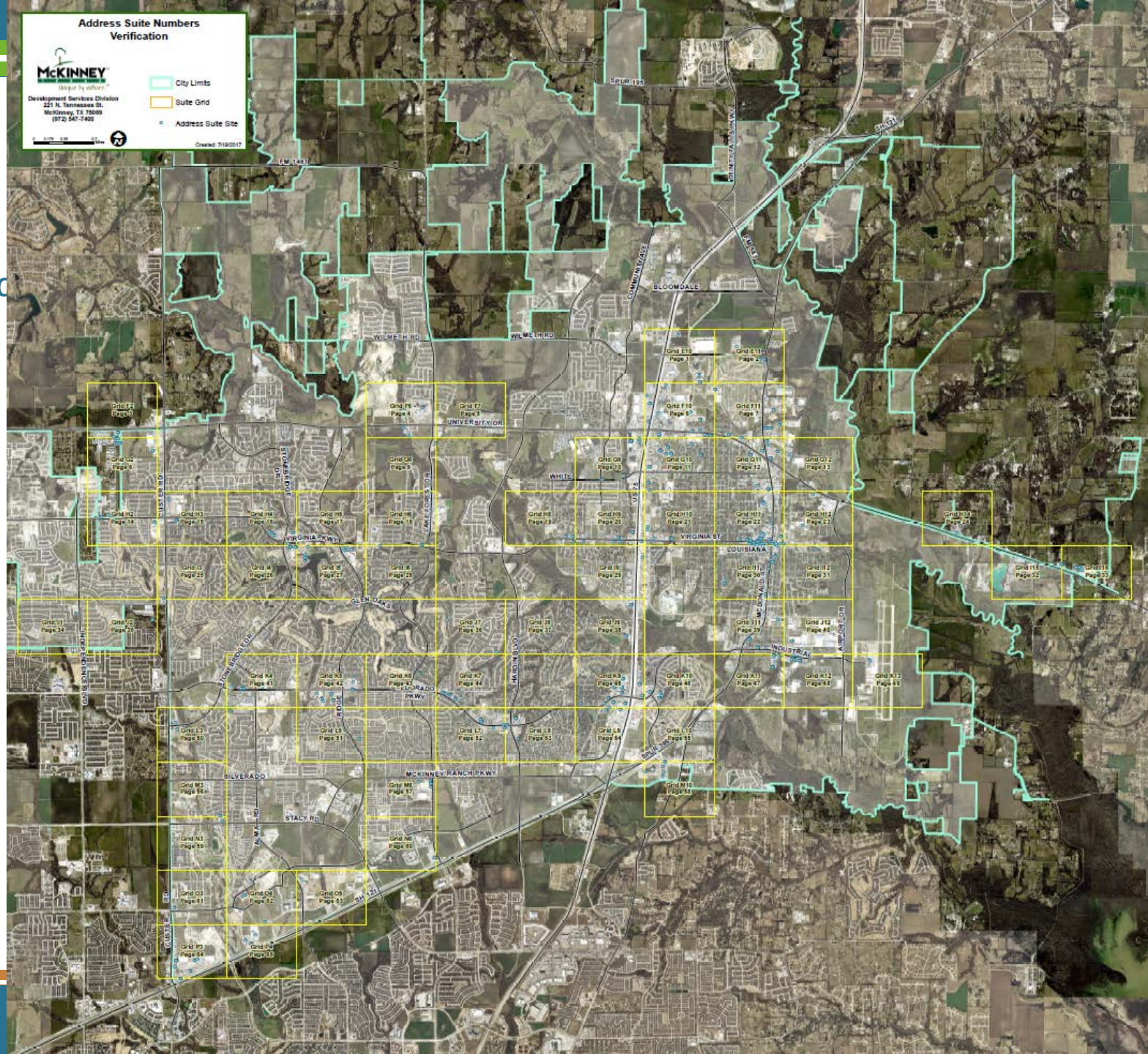
Suite Numbers

- Problem
 - New software system is address based



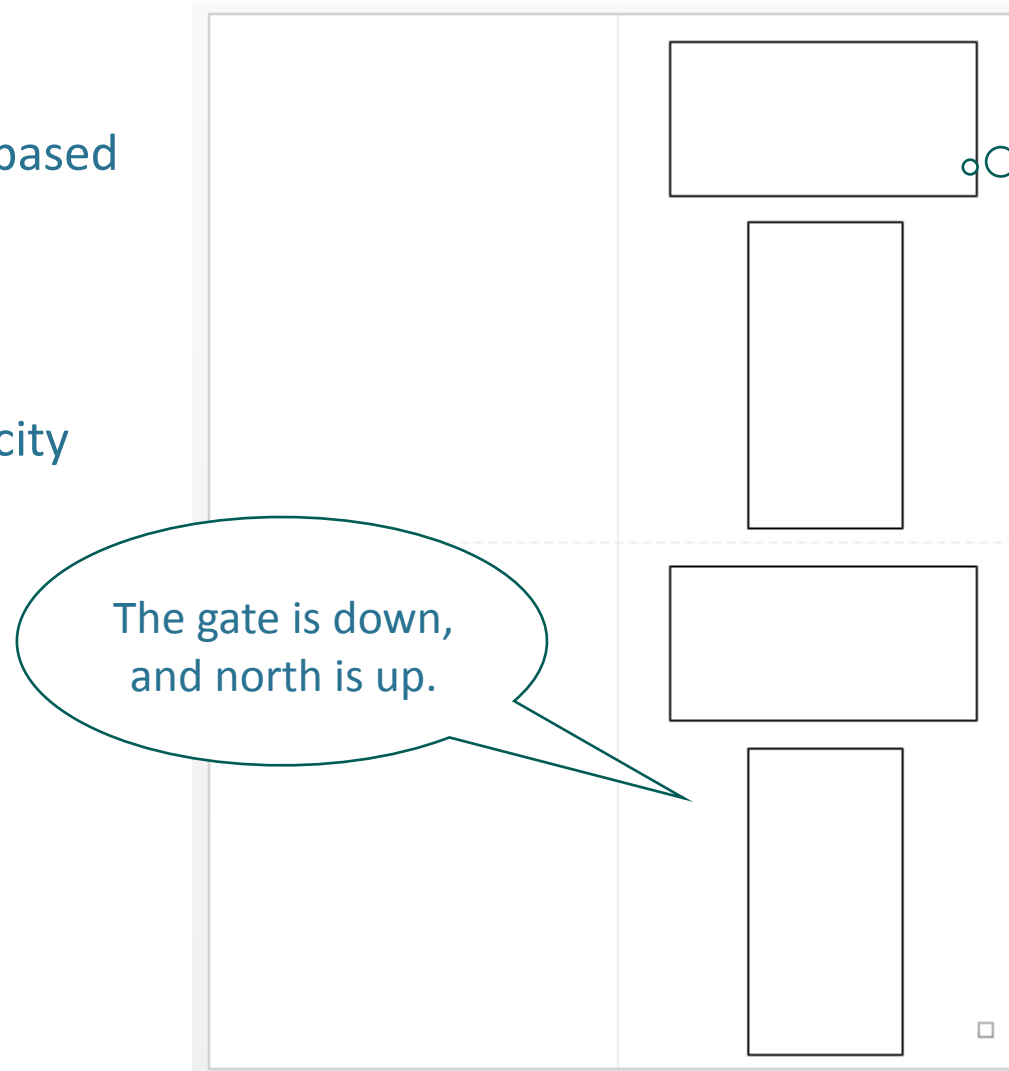
Implementing

- Problem
 - New software system is address based
- Solution
 - Collect all suite addresses in the city

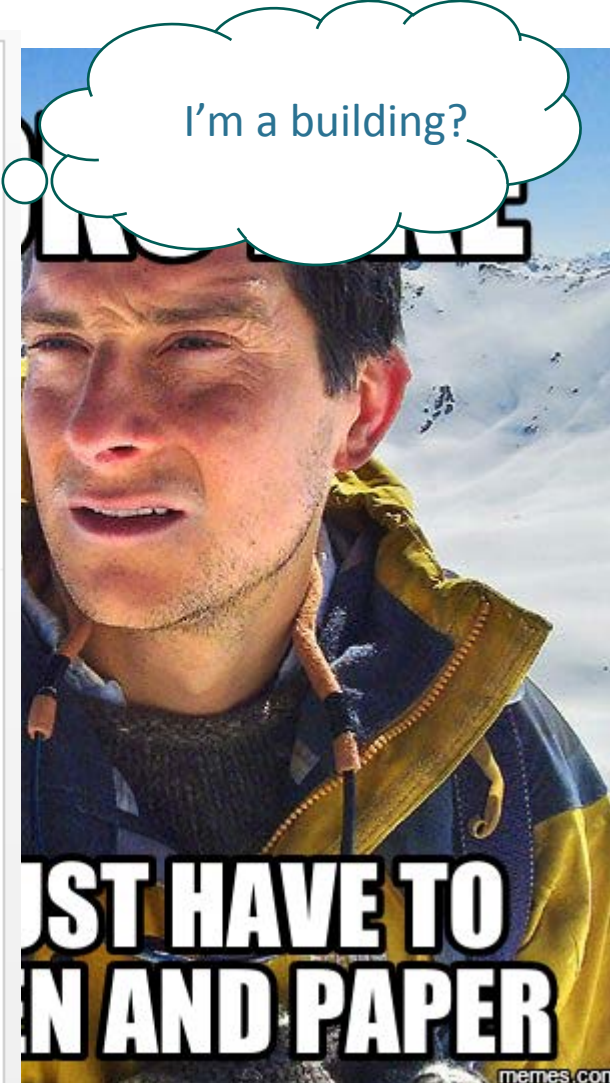


Implementing

- Problem
 - New software system is address based
- Solution
 - Collect all suite addresses in the city
- Implementation
 - Pen & Paper



Suite Numbers

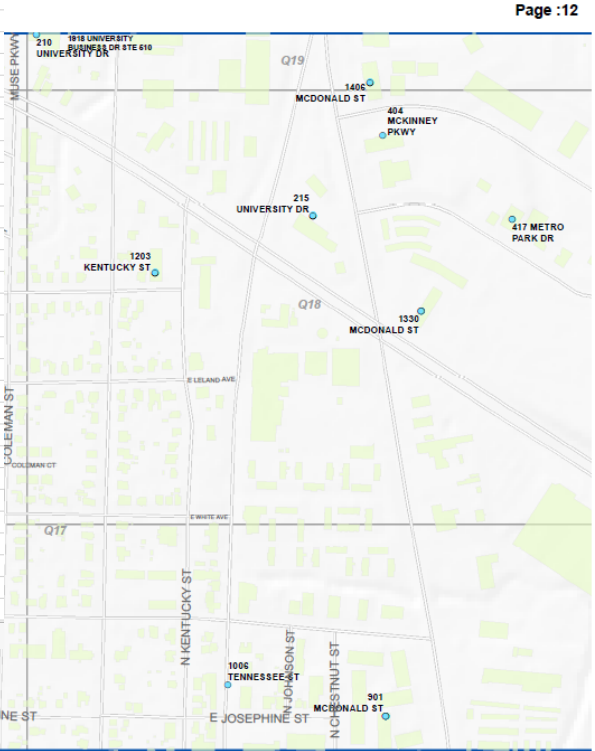


Implementing

- Problem
 - New software system is address based
- Solution
 - Collect all suite addresses in the city
- Implementation
 - Pen & Paper

	A	B	C	D	E
	Add_Unit	SitusAdd	LOCNAME	PageName	PageNumber
1	STE F	2140 REDBUD BLVD	STOLEN BASES SPORTS FACILITY LLC	E10	1
2	STE G	2140 REDBUD BLVD	ACO PROCESSING CENTER	E10	1
3	STE A	2140 REDBUD BLVD	BROACH BILT MANUFACTURING INC	E10	1
4	STE G	2140 REDBUD BLVD	PROSUPPS USA LLC	E10	1
5	STE 101	2160 REDBUD BLVD	CAMOZZI PNEUMATIC INC	E10	1
6	STE 110	2160 REDBUD BLVD	WESTERN PINNACLE INTERNATIONAL INC	E10	1
7	# US75	3350 CENTRAL EXPY	TRACTOR SUPPLY CO OF TEXAS LP	E10	1
8	STE 400	3105 MCDONALD ST	MCKINNEY COPPER KITCHEN	E11	2
9	# A	700 WILMETH RD	COLLIN COUNTY SERVICE CENTER	E11	2
10	STE 200	3103 MCDONALD ST	PACIFIC TRADEWINDS COFFEE CO	E11	2
11	STE 300	3105 MCDONALD ST	MORGAN TOBACCO	E11	2
12	# 800	3111 MCDONALD ST	DESIGN STYLE & COMPANY	E11	2
13	STE 1000	3111 MCDONALD ST	CROSSFIT REEMERGE	E11	2
14	STE 413	1962 UNIVERSITY BUSINESS DR	KNOBS AND KNOCKERS	F2	3
15	STE 102	1971 UNIVERSITY BUSINESS DR	JET STREAM AVIATION PRODUCTS, INC.	F2	3
16	STE 106	1971 UNIVERSITY BUSINESS DR	GREEN VALLEY WINDOW TINT	F2	3
17	STE 105	1971 UNIVERSITY BUSINESS DR	THE AUTO COLLECTION L L C	F2	3
18	STE 111	1971 UNIVERSITY BUSINESS DR	THE HALLADAY GROUP, INC.	F2	3
19	STE 109	1971 UNIVERSITY BUSINESS DR	1911 ACADEMY OF FIREARMS AND TRAINING	F2	3
20	STE 1900	5236 UNIVERSITY DR	BAYLOR MEDICAL PLAZA PHARMACY AT MCKINNEY	F6	4
21	STE 2200	5236 UNIVERSITY DR	DERMATOLOGY SPECIALISTS OF MCKINNEY	F6	4
22	STE 3700	5236 UNIVERSITY DR	SKINZONE RX	F6	4
23	# 100	5317 UNIVERSITY DR	PRE-SCHOOL EDUCATIONAL MANAGEMENT	F6	4
24	# 200	5345 UNIVERSITY DR	RED OAK FAMILY DENTISTRY	F6	4
25	# P3P4	4550 UNIVERSITY DR	SUE'S FASHIONS	F7	5
26	STE 102	1207 UNIVERSITY DR	BMF DESIGNS	F10	6
27	STE 107	2001 CENTRAL CIR	TEXAS INDUSTRIAL ELECTRICAL SUPPLY	F10	6
28	STE 105	2040 REDBUD BLVD	POPULAR INK LLC	F10	6
29	STE 403	1717 UNIVERSITY DR	NORTH TEXAS ESCAPE ROOMS	F10	6
30	STE 415	1717 UNIVERSITY DR	CHOPSTICKS ASIAN CAFE	F10	6
31	STE 411	1717 UNIVERSITY DR	PREMIER CLEANERS	F10	6
32	STE 520	1933 CENTRAL EXPY	MCKINNEY DENTAL GROUP AND ORTHODONTICS, PC	F10	6
33	# 200	1980 CENTRAL EXPY	BATTERIES PLUS	F10	6
34	STE 700	2045 CENTRAL EXPY	FUDDRUCKER'S #665	F10	6
35	# 790	2045 CENTRAL EXPY	FLOORS TOUCH, INC.	F10	6
36	STE 750	2045 CENTRAL EXPY	CHIRO ONE WELLNESS CENTER OF MCKINNEY PLLC	F10	6
37					

Suite Numbers



Implementing

Capital Improvement Projects

- Problem

- New web app launch
- Attribute updates done once a year by GIS staff

The screenshot displays the 'CIP 2018-2022' web application. The top navigation bar includes 'HOME', '5-YEAR CIP', 'ACTIVE CONSTRUCTION', and 'ACTIVE DESIGN'. The 'ACTIVE CONSTRUCTION' tab is selected, showing a list of projects on the left and a map on the right. The map shows a project area highlighted in orange, with a popup window displaying details for project PK3222.

CIP 2018-2022

HOME 5-YEAR CIP **ACTIVE CONSTRUCTION** ACTIVE DESIGN

ACTIVE CONSTRUCTION
list of active construction projects and select a project to view additional information such as status, contact information, and other pertinent project information.

Please note that these projects do not include development-led construction as part of an active development project. For more information on active development projects please visit the [McKinney Planning Map](#)

CO9151 INFRASTRUCTURE INITIATIVE - COLE ST., BASS TO COLLEGE
DR1205 CREEK, LAKE & DAM IMPROVEMENTS
PK1644 GOLD STAR FAMILY MEMORIAL (VETERANS PARK)
PK3222 BONNIE WENK PARK PHASE II
PK4326 COMEGY'S CREEK TR - MALVERN ELEM/COMM CTR
PK8062 WILSON CREEK HIKE/BIKE TRAIL
ST1219 VIRGINIA PARKWAY LN 5 & 6 (BELLEGROVE-US75)
ST1231 VIRGINIA PARKWAY LN 5 & 6 (RIDGE-BELLEGROVE)
ST1232 TXDOT FM 546 Construction Project
ST1614 MCKINNEY RANCH PKWY CONSTRUCTION
ST1622 WHITE AVE FROM US75 TO GRAVES ST
ST3211 HARDIN BLVD LANES 5 & 6 (SH121-MCKINNEY RANCH)
ST4417 HARDIN RD RETAINING WALL
WA1624 BLOOMDALE RD PUMP STATION TRANSMISSION LINE (794)

PK3222
Project Type: PARKS
Project Name: BONNIE WENK PARK PHASE II
Project Number: PK3222
Project Manager: Jenny Baker
Project Manager Phone: 972-947-2644
Email: [Send Email](#)
Address: Under Construction
Status: ST1219

Implementing

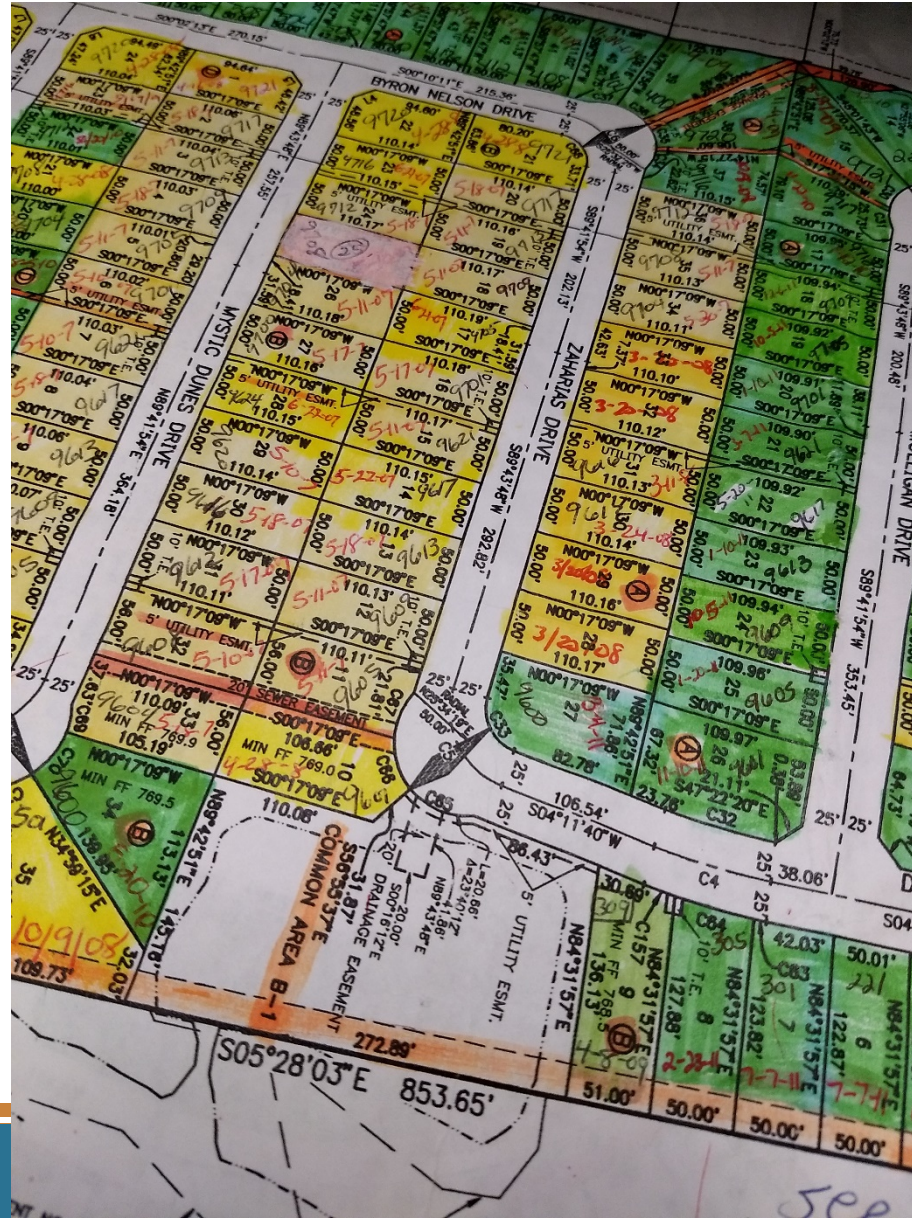
- Problem
 - New web app launch
 - Attribute updates done once a year by GIS staff
- Solution
 - More frequent updates to support new web app

Capital Improvement Projects

Implementing

- Problem
 - Inefficient Workflow

Permit Tracker App



Implementing

- Problem
 - Inefficient Workflow
- Solution
 - Shareable web-based editing

Permit Tracker App



"Let's put down the Marks-A-Lot!"



51
work hours
saved annually

Our goal is to be able to provide the most timely and efficient building permit processes that ensure optimal customer experiences. Any time that is not spent efficiently in regards to plan review impacts our customers negatively. We acknowledged the need to improve the process that was in place for residential lot plat tracking. We were still using a Marks-A-Lot to color newly platted lots on a paper plat. We needed to move into the electronic age with this process.

I had the idea of putting this information on an electronic map to save time and make the information readily available when we needed it. By having this information at our fingertips, we no longer need to get up, shuffle through plats, and bring out our markers. Let's put down the Marks-A-Lot!




Mike Smith





Mike Smith, Senior Plans Examiner

Implementing


Permit Tracker App

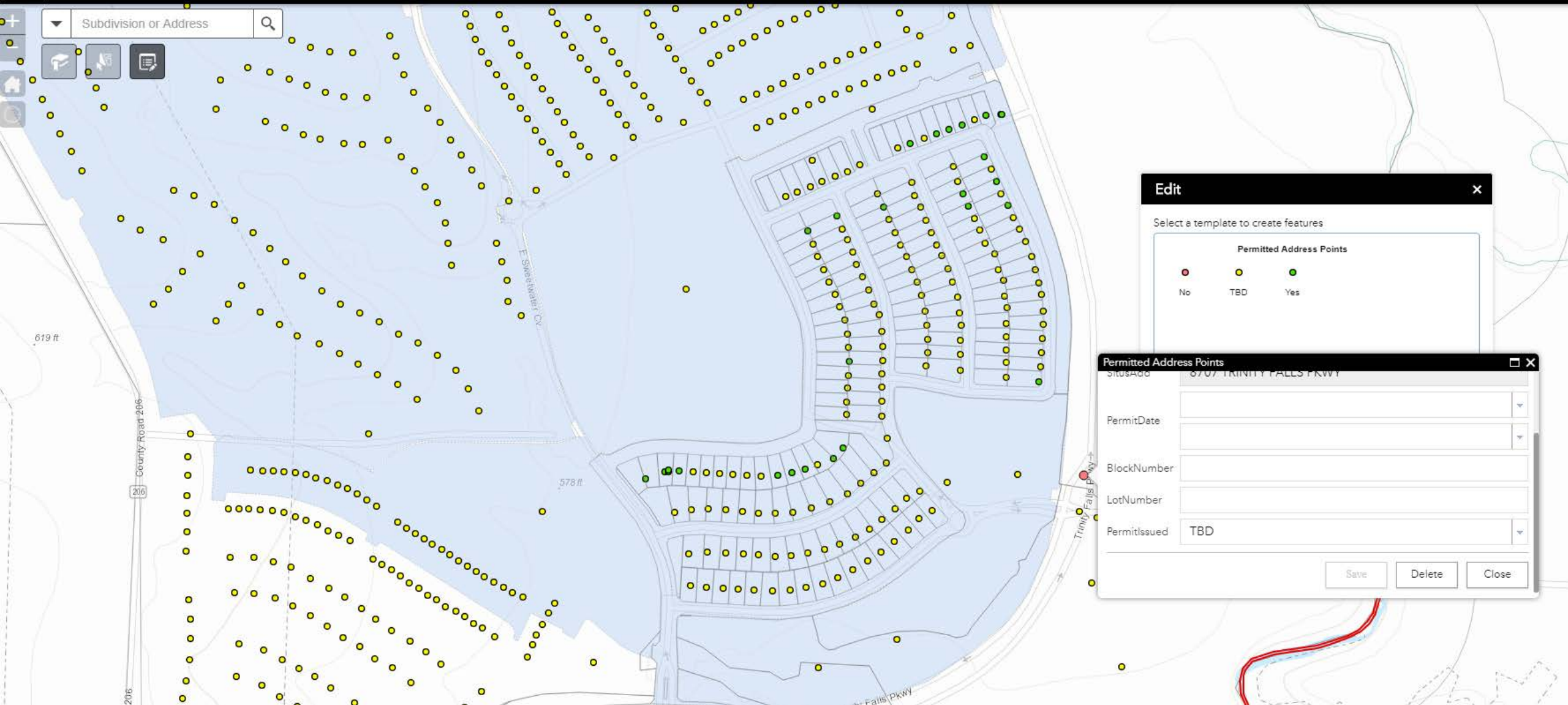


Permit Tracker Application



Subdivision or Address






Edit


×

Select a template to create features


Permitted Address Points



No



TBD



Yes

Permitted Address Points

5109400

8707 TRINITY FALLS PKWY

PermitDate

BlockNumber

LotNumber

PermitIssued

TBD

Save

Delete

Close

Overview

- Types of People, Types of Tech
- Approaching Needs-Analyses
- Implementing
 - Data Collection
 - Field Verification
 - Attribute Updates

THE ADVENTURES OF **BUSINESS CAT**



TOM FONDER

BUSINESSCAT.HAPPYJAR.com

Fin.

jcarmona@mckinneytexas.org

[linkedin.com/in/jordancarmona](https://www.linkedin.com/in/jordancarmona)