

City of Pharr, TX - GIS

L David Flores, Jr., CPM
GIS Coordinator

Agenda

- The History
- The Beginning
- The First Year
- The Next Five
- Present
- Our Future

The History

- Early Mapping-Beard Maps
- AutoCAD
- 1996 – Consultant
- 2000 – City Engineer
- 2006 – The Beginning

1996



2010



The Beginning

- Analyze multiple data set and layers
- Geo-Reference
- ACAD
- SHP
- Stave off disasters

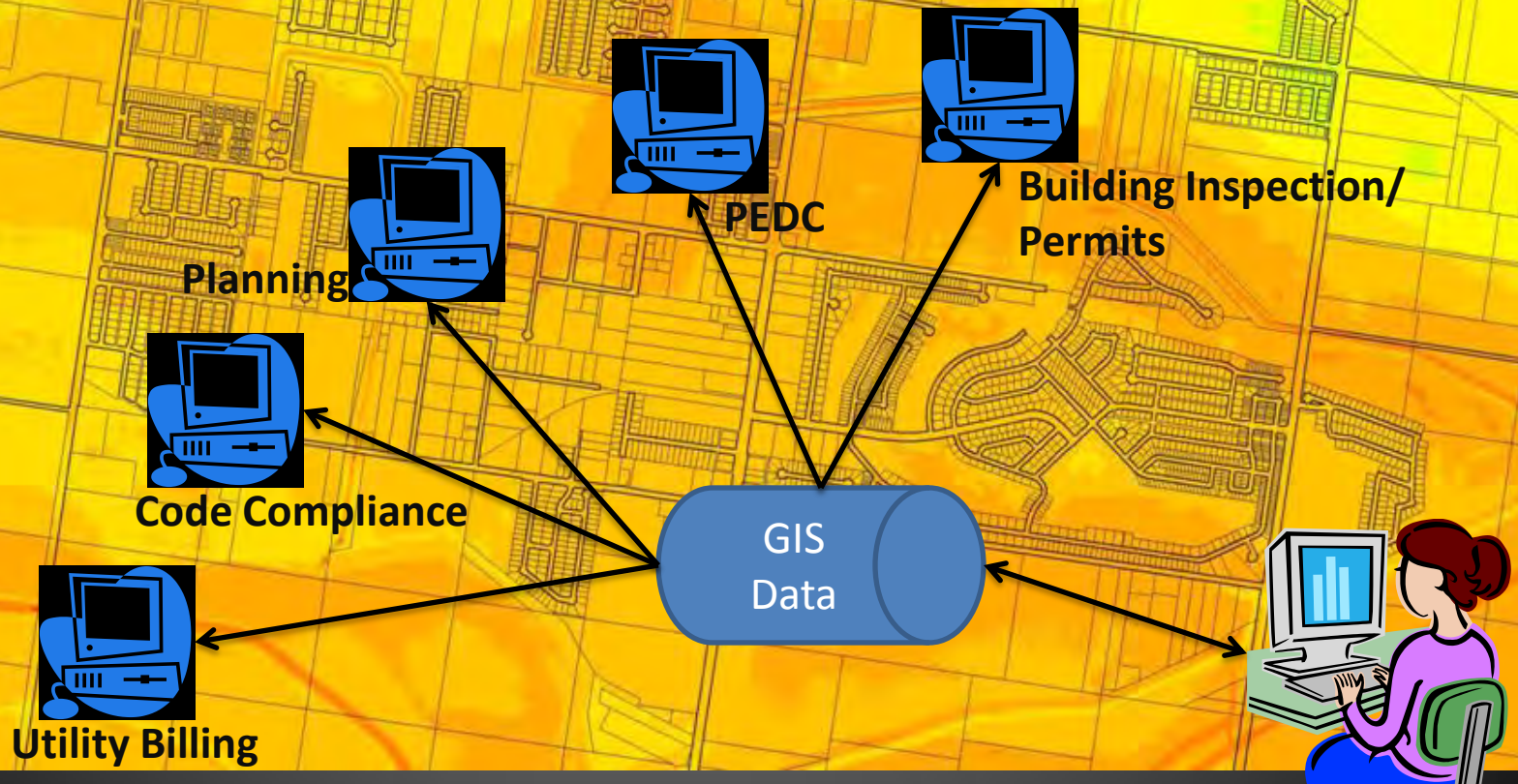
The First Year

- Analyze
- Geo-Reference
- Correct
- Create GDB/SHP

The Next Five Years

- ArcReader
- Utilities Infrastructure
- Addressing
- GPS - ArcPad
- RGVAUG

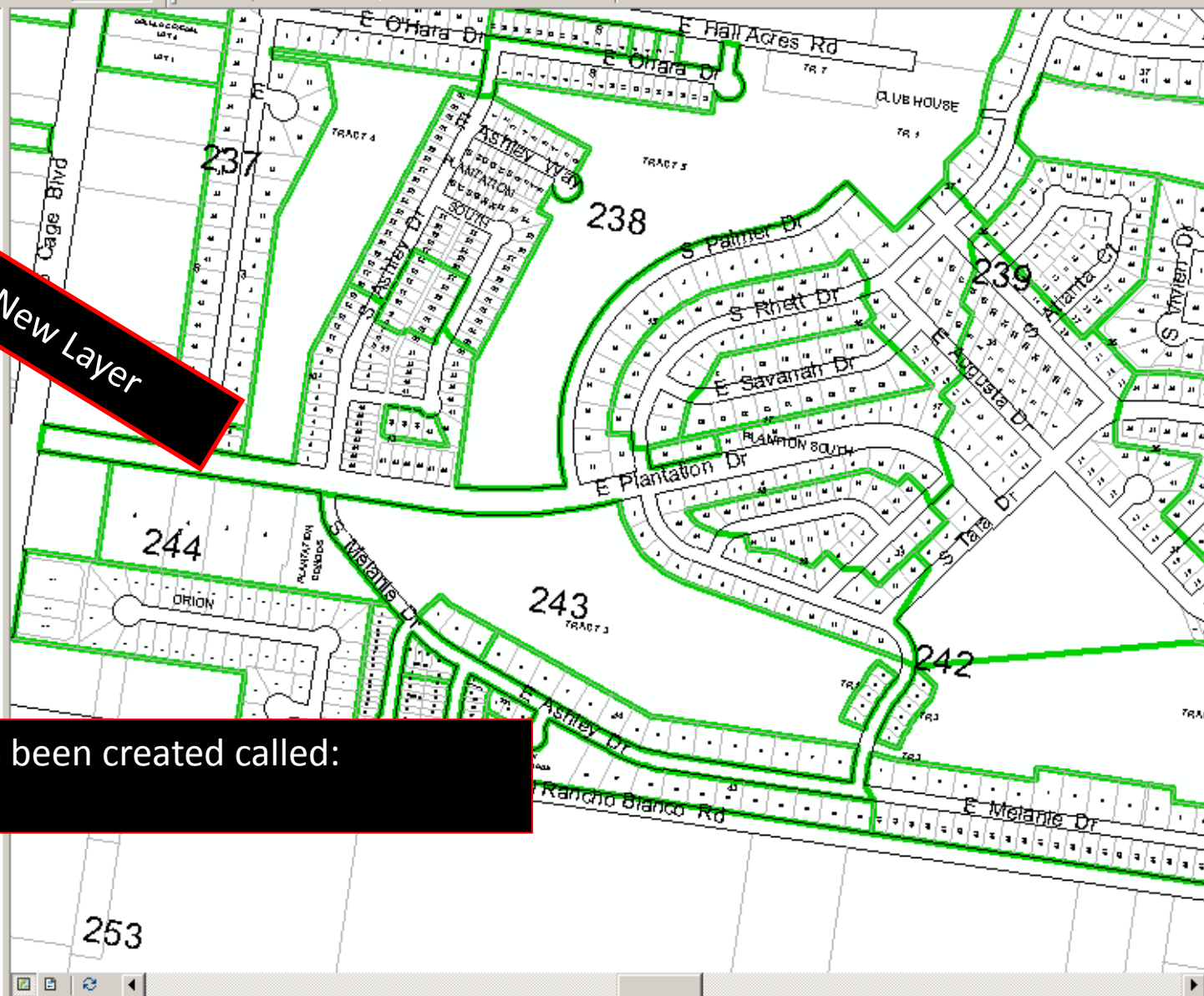
Currently



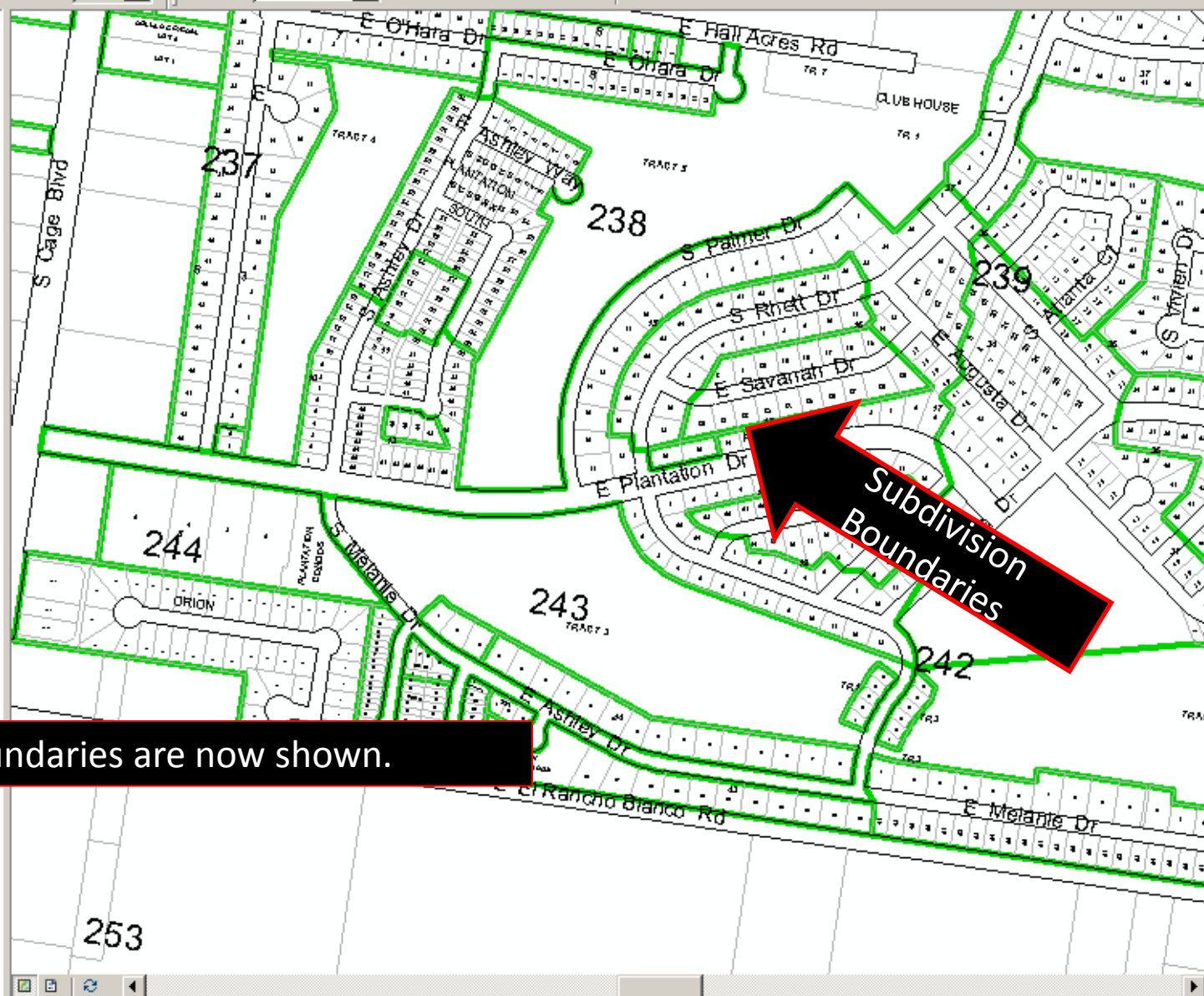
- Layers**
- ☒ ACAD Text
 - ☒ Pharr_Current.dwg Polyline
 - ☒ street_center_lines
 - ☒ city_limit_new
 - ☐ Floodway
 - ☒ Subdivisions
 - ☐ MAR20080625
 - ☐ HCAD 2009
 - ☐ Parcel_Master_Ann
 - ☐ 2007 6" Aerial

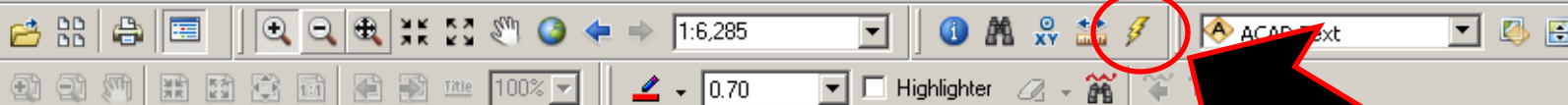
New Layer

A new layer has been created called:
Subdivisions.



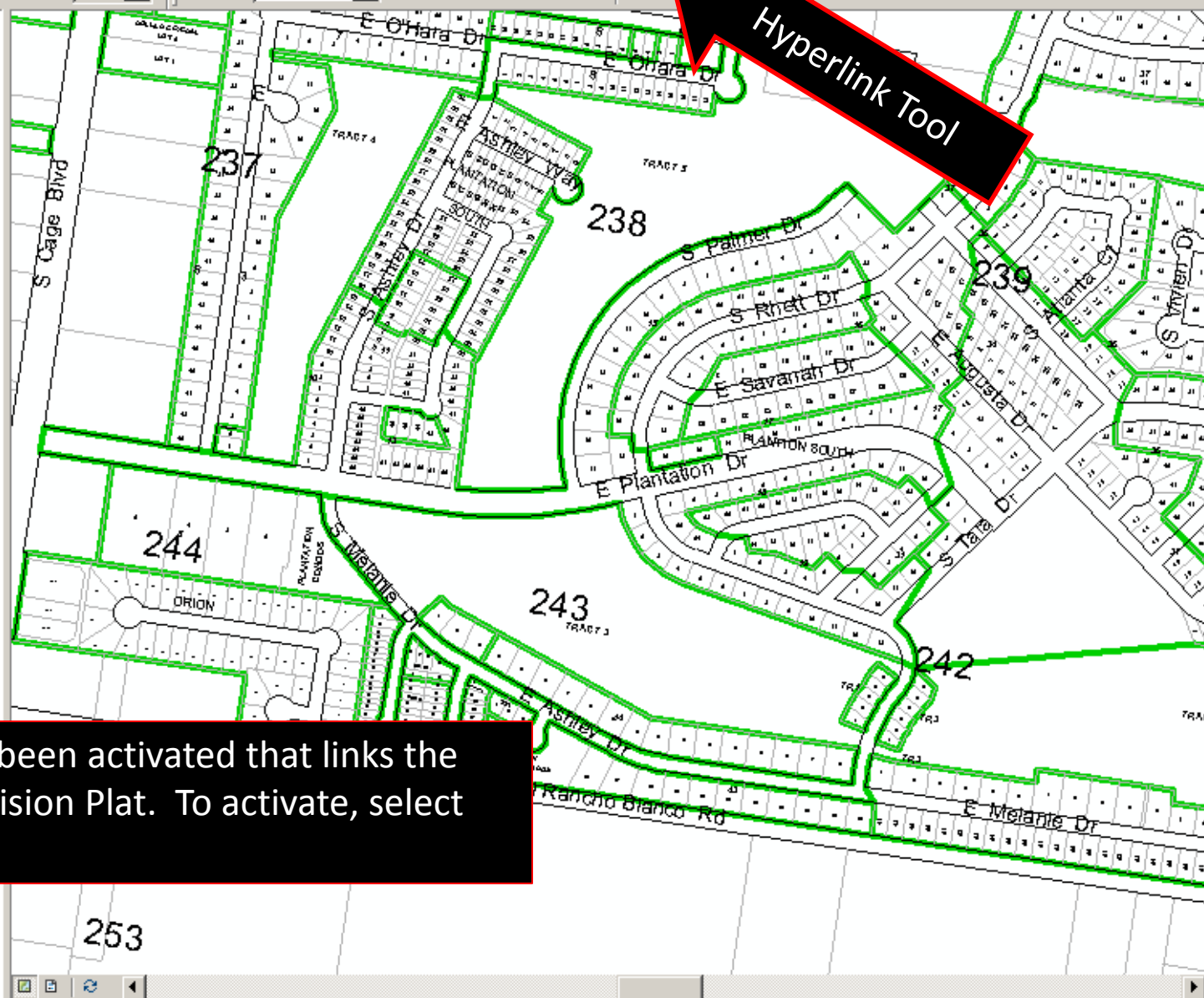
- Layers**
- ☒ ACAD Text
 - ☒ Pharr_Current.dwg Polyline
 - ☒ street_center_lines
 - ☐ city_limit_new
 - ☐ floodway
 - ☒ Subdivisions
 - ☒ MAR20080625
 - ☐ HCAD 2009
 - ☐ Parcel_Master_Annex
 - ☐ 2007 6" Aerial





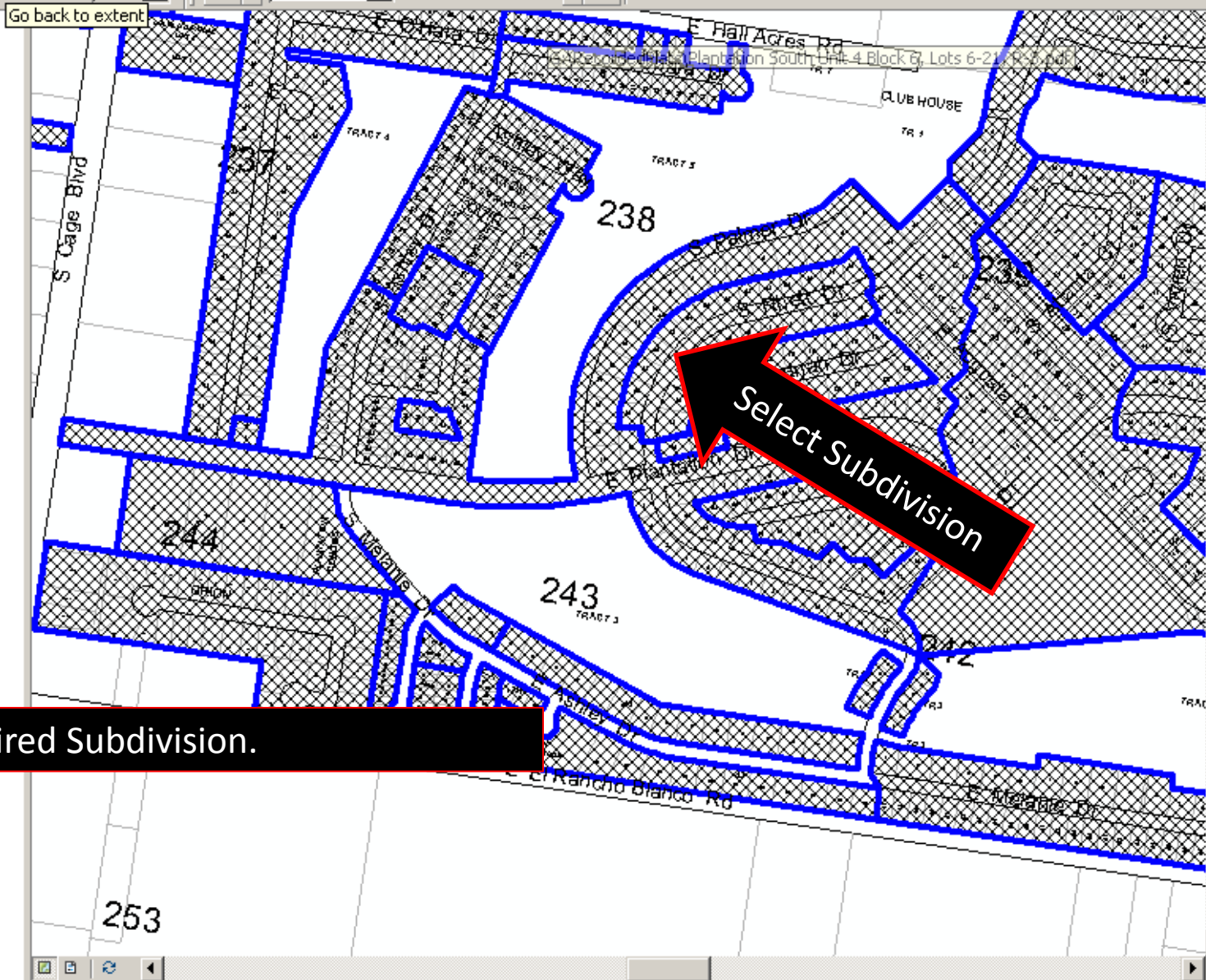
Hyperlink Tool

- Layers**
- ☒ ACAD Text
 - ☒ Pharr_Current.dwg Polyline
 - ☒ street_center_lines
 - ☐ city_limit_new
 - ☐ floodway
 - ☒ Subdivisions
 - ☒ MAR20080625
 - ☐ HCAD 2009
 - ☐ Parcel_Master_Annex
 - ☐ 2007 6" Aerial

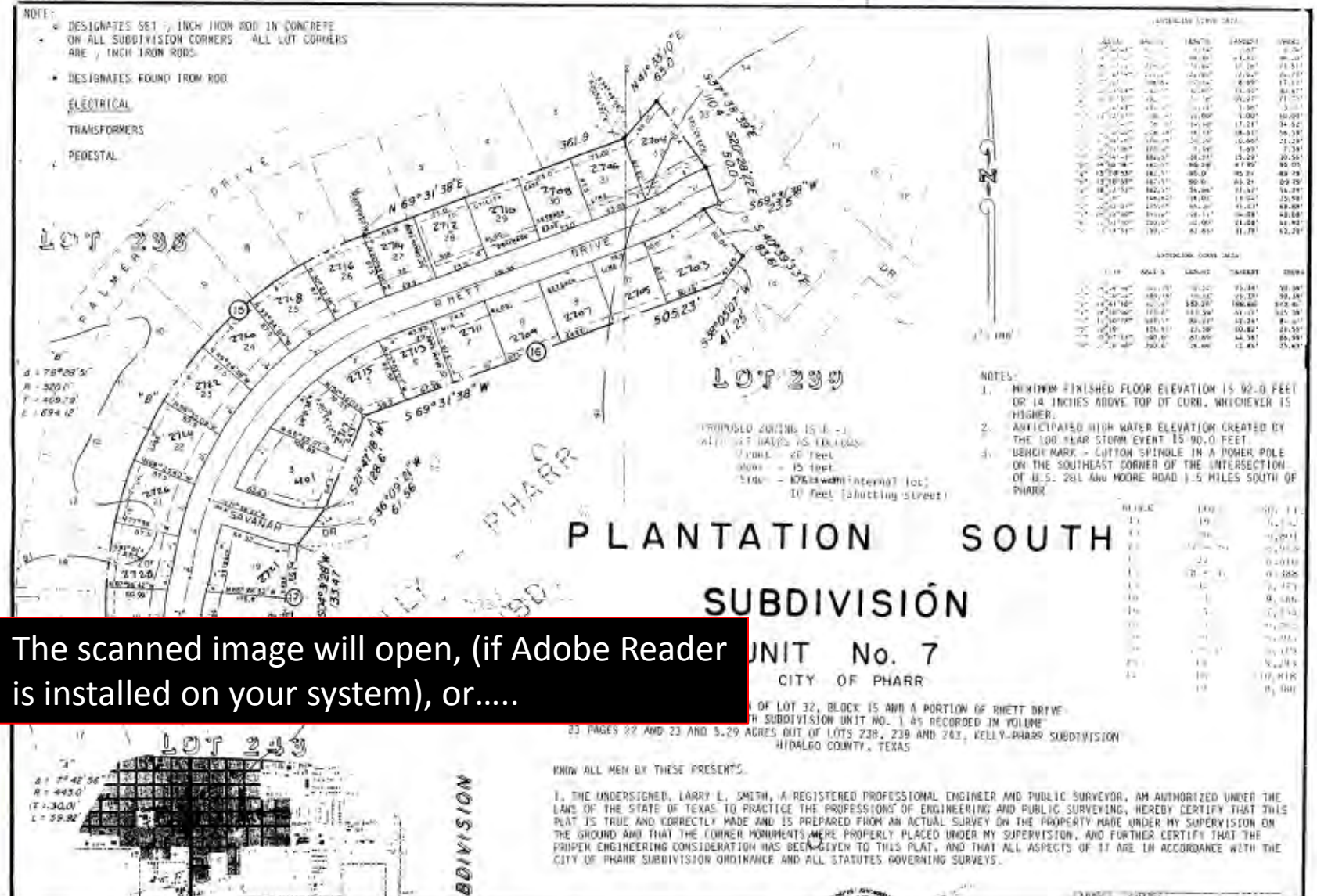


A new tool has been activated that links the scanned Subdivision Plat. To activate, select the tool.

- Go back to extent
- Layers**
- ☒ ACAD Text
 - ☒ Pharr_Current.dwg Polyline
 - ☒ street_center_lines
 - ☐ city_limit_new
 - ☐ floodway
 - ☒ Subdivisions
 - ☒ MAR20080625
 - ☐ HCAD 2009
 - ☐ Parcel_Master_Annex
 - ☐ 2007 6" Aerial



Select the desired Subdivision.



The scanned image will open, (if Adobe Reader is installed on your system), or.....

Present

- A great interest
- LIDAR
- Ortho Acquisition
- PD, Fire, Public Works
- NWS
- ArcGIS Online

ArcGIS Online

ArcGIS Online - Windows Internet Explorer

http://www.arcgis.com/home/index.html

File Edit View Favorites Tools Help

Convert Select


Favorites

ArcGIS Online

Resource Center Show: All Content▼ Help▼ Sign In

ArcGIS GALLERY MAP GROUPS MY CONTENT Find maps, applications and more... 🔍

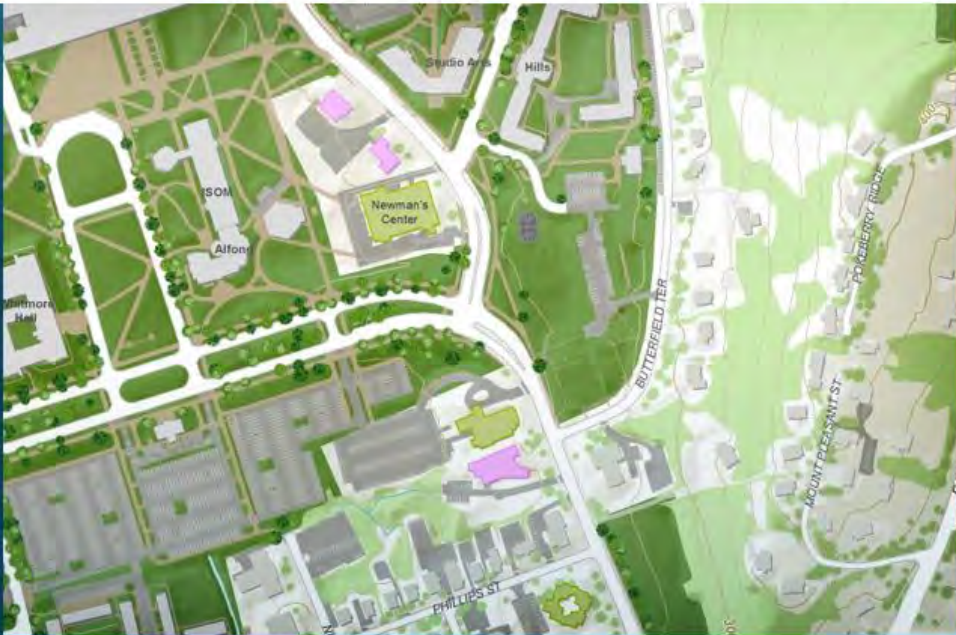
ArcGIS Online



**Maps and Apps
for Everyone**

Easy online discovery, access,
visualization, and dissemination of
geospatial information.

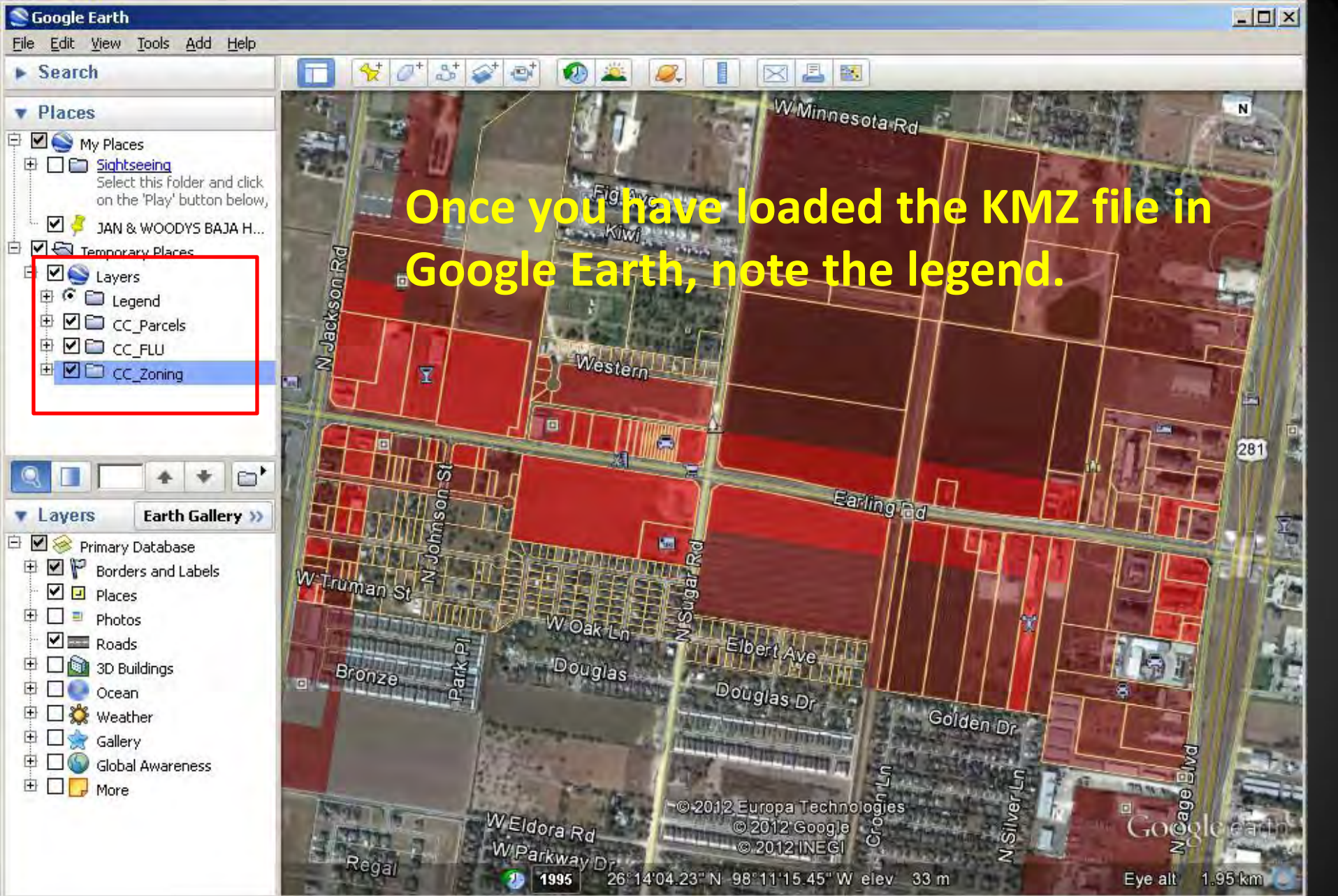
VIEW NOW ➔



Featured Maps

Done

Internet 100%



Google Earth

File Edit View Tools Add Help

Search

Places

- My Places
- Sightseeing
- JAN & WOODYS BAJA H...
- Temporary Places
- Layers
- Legend
- CC_Parcels
- CC_FLU
- CC_Zoning

Layers

Earth Gallery >>

- Primary Database
- Borders and Labels
- Places
- Photos
- Roads
- 3D Buildings
- Ocean
- Weather
- Gallery
- Global Awareness
- More

NOLANA LOOP

NOLANA LOOP	
FID	266
HCAD_ID	M2650-00-004-0007-00
OID_	21010
STNMBR	1200
STNAME	NOLANA LOOP
SUFFIX	
SITUS	1200 W NOLANA LOOP
ISSUEDATE	04/26/2011
DIR	W
OID1	7389
prop_id	231025
geo_id	M2650-00-004-0007-00
prop_type_	R
legal_desc	MCCOLL TRACT S750'-W567'- E635' & S60'-E68' LOT 7 BLK 4 9.85AC GR 8.98AC NET
situs_num	1200
situs_stre	W
situs_st_1	NOLANA LOOP
situs_st_2	NULL
situs_unit	NULL
situs_city	PHARR
situs_stat	TX
situs_zip	NULL
file_as_na	SUBHASH & SAROJINI BOSE LP
addr_line1	NULL
addr_line2	7007 N 1ST LN

26°14'04.23" N 98°11'15.45" W elev 38 m

Eye alt 1.95 km

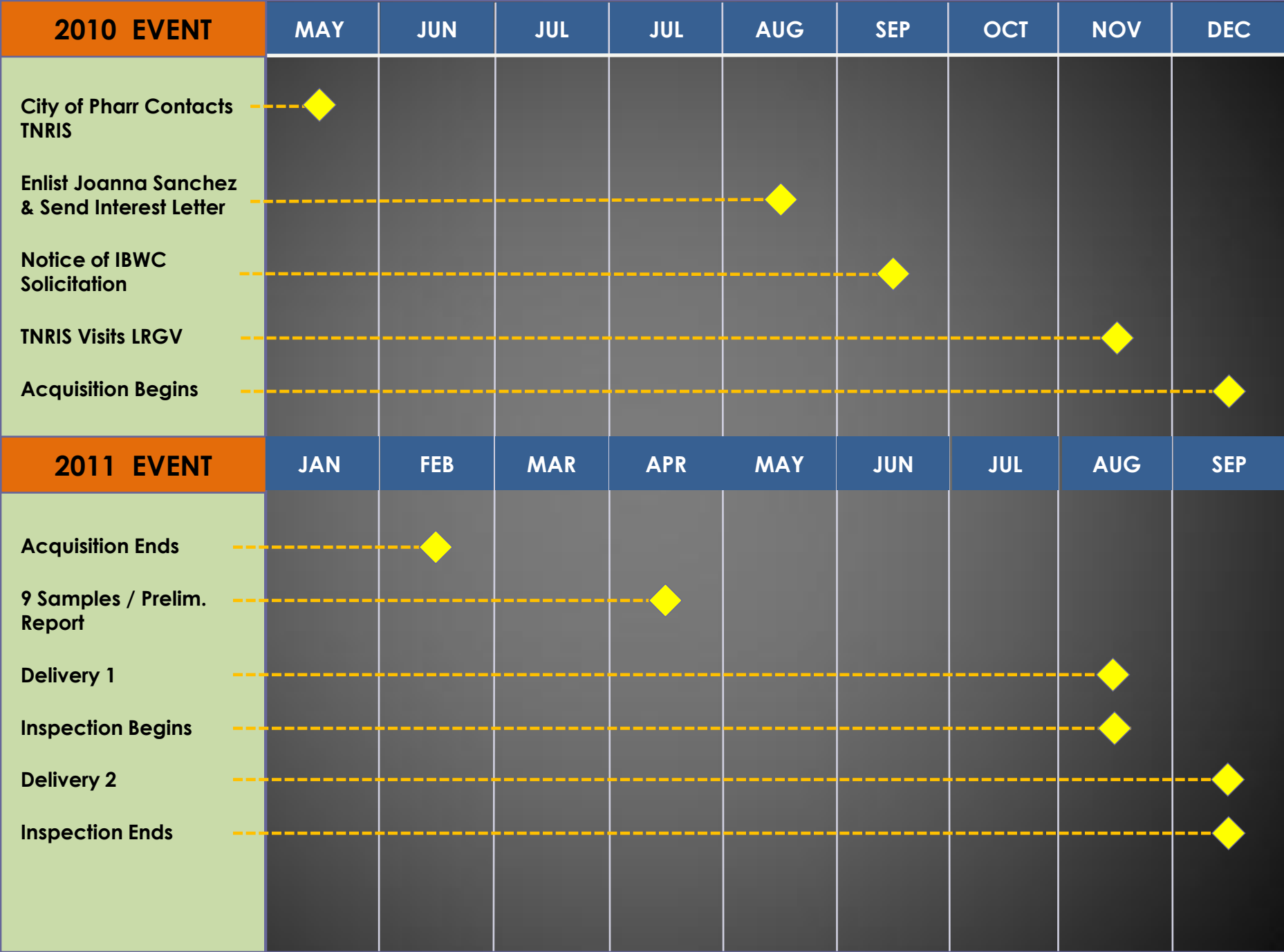
With the CC_Parcel layer on, select any parcel and the information will display.

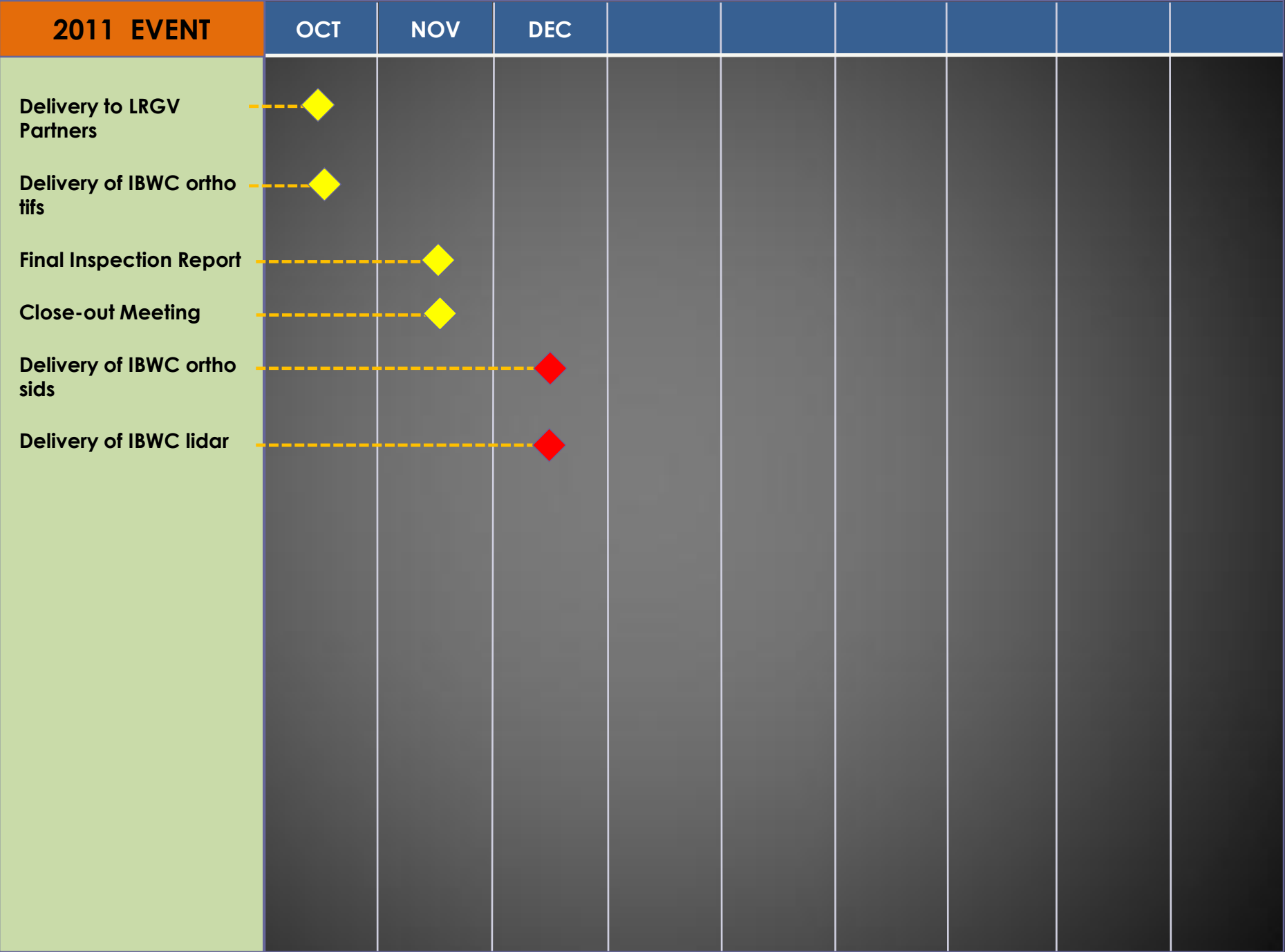
Lower Rio Grande Valley Partners

**Brownsville Public Utilities Board
City of Alton
City of Edinburg
City of McAllen
City of Pharr
City of Port Isabel
City of San Benito
Hidalgo County Appraisal District
Laguna Madre Water District**

9

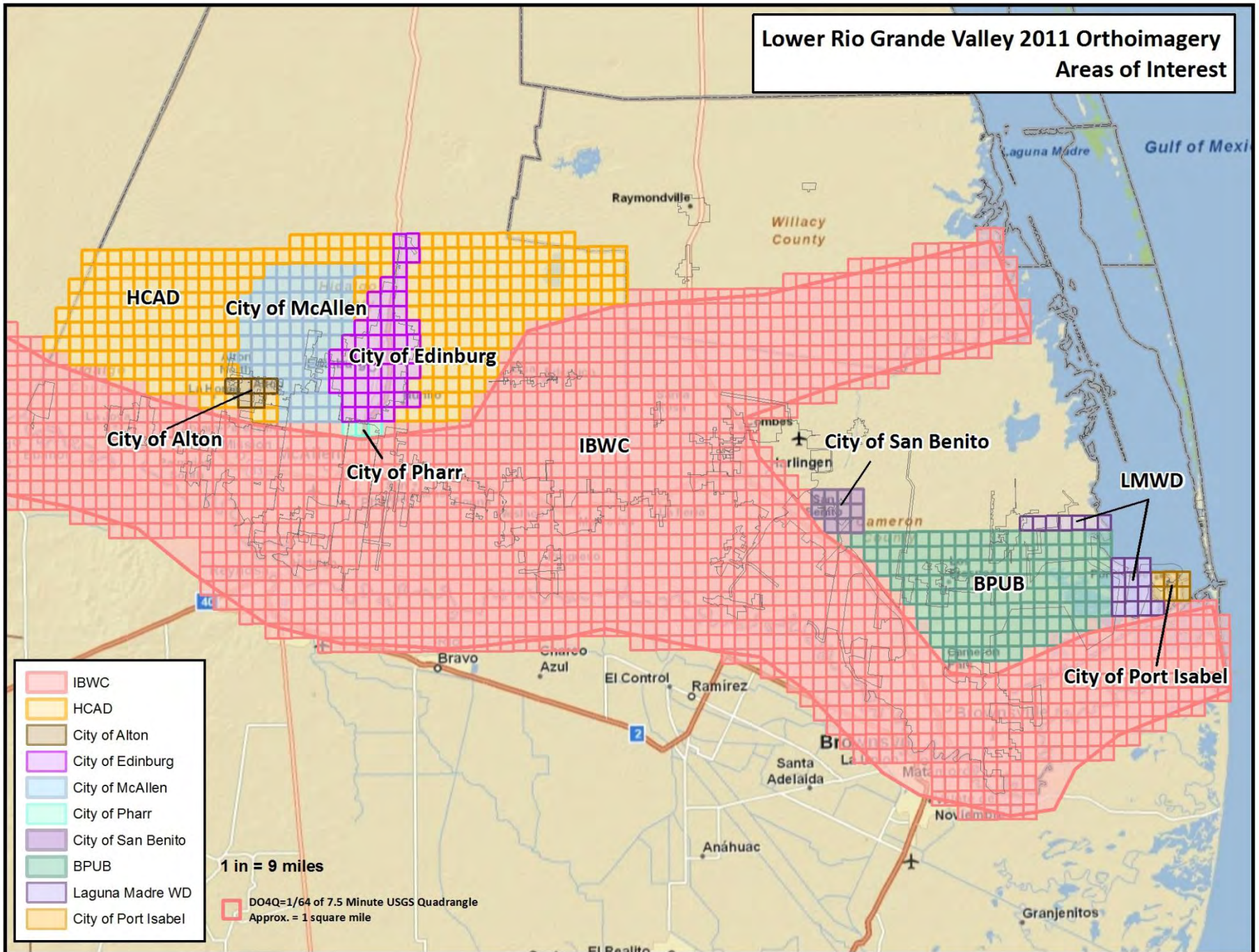
International Boundary and Water Commission





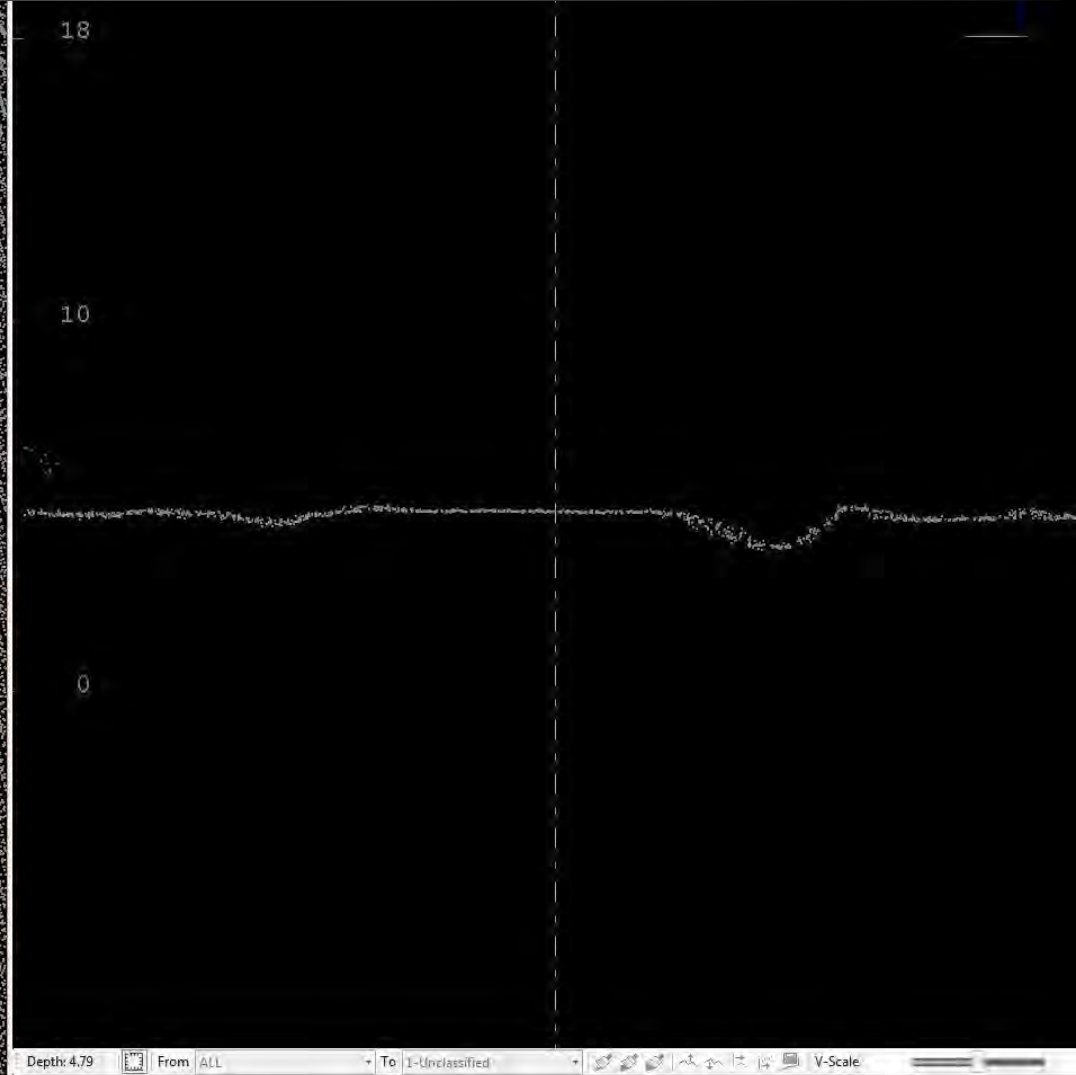


Lower Rio Grande Valley 2011 Orthoimagery Areas of Interest





Pharr Lidar AOI
Elevation (Intensity)
2 ppsm



All Classes

Pharr Lidar
Classified Point Cloud
2 ppsm



Hydro-conditioned Enforced

Pharr Lidar
DEM



Monument #42

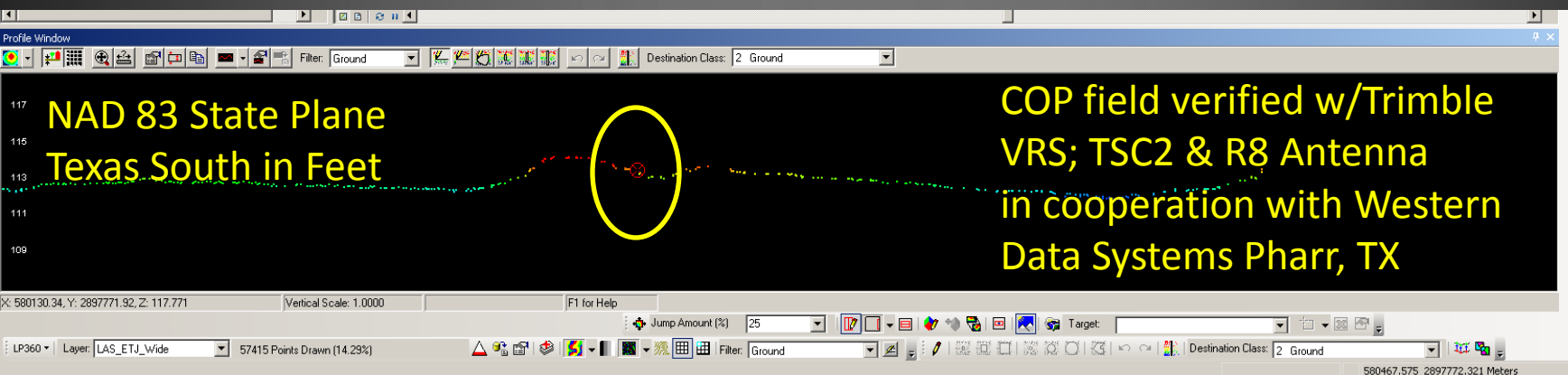
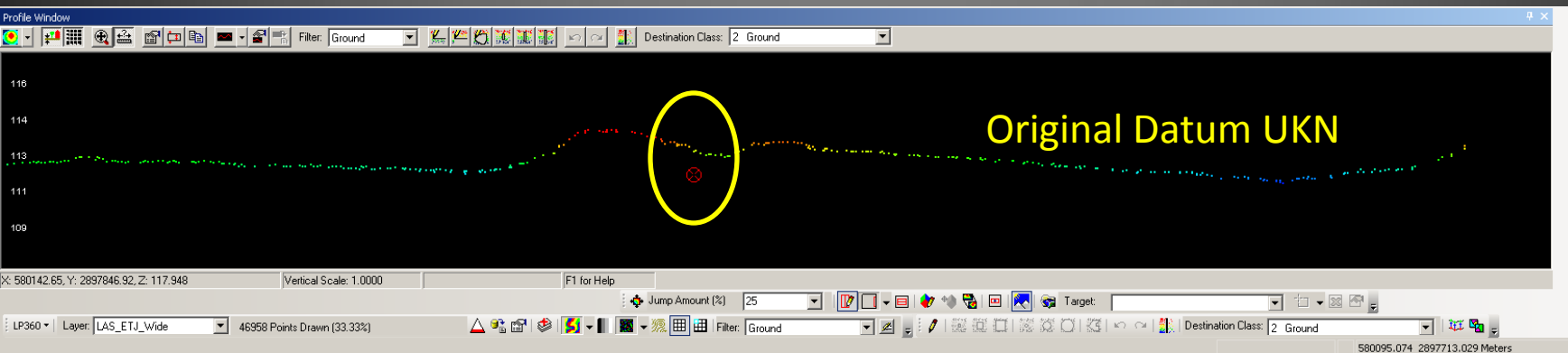
Using the LIDAR data received during the last aerial acquisition we are able to visually see the Discrepancy in elevation.

ArcEditor 10 SP3
LP360 by Q-Coherent

L. David Flores, Jr, CPM, GIS
Coordinator 956-702-5355 X1404



42	16597292.29	1083312.965	112.36	Marker	
42x	16597292.19	1083313.441	113.331	1ST Reading	04/19/2011 -0.971





Monument #40

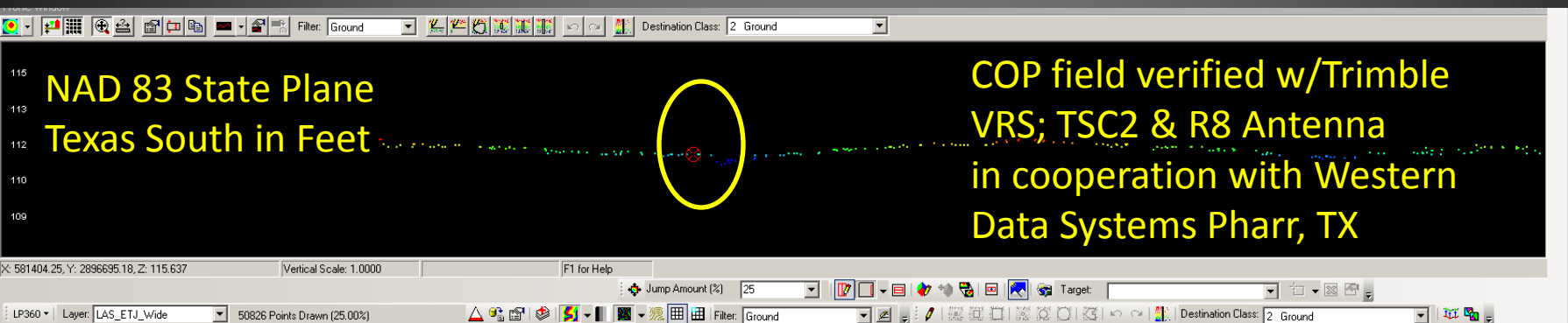
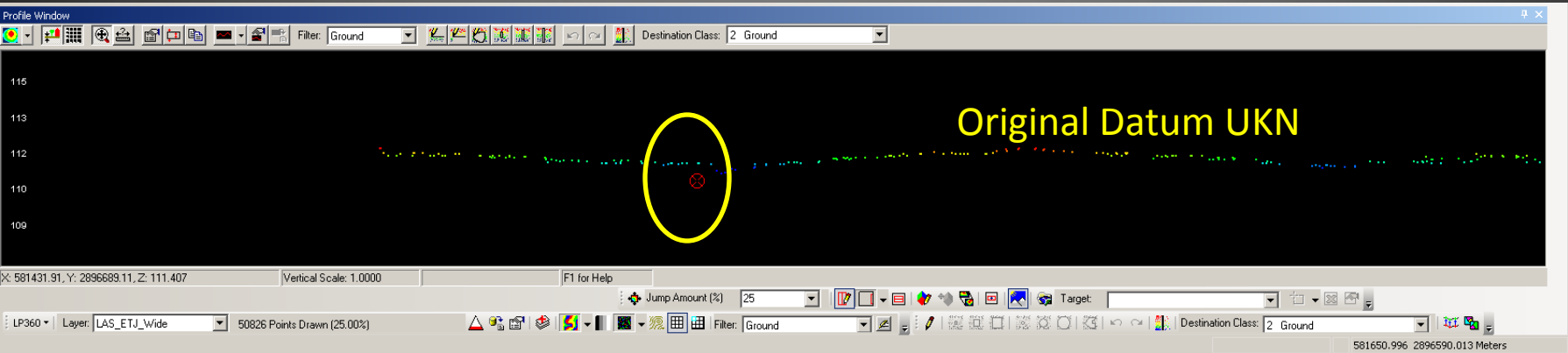
Using the LIDAR data received during the last aerial acquisition we are able to visually see the Discrepancy in elevation.

ArcEditor 10 SP3
LP360 by Q-Coherent

L. David Flores, Jr, CPM, GIS
Coordinator 956-702-5355 X1404



40	16593593.19	1087438.54	110.72	Marker	
40x	16593593.02	1087438.448	111.665	1ST Reading	04/13/2011 -0.945



LRGV Orthoimagery + Lidar	Tetra Tech Ortho sub Keystone Aerial Surveys Lidar sub Watershed Sciences	Ortho 6 Inch NC		Ortho 6 Inch CIR Buy-Up	Ortho 6 Inch NC + CIR	LIDAR	Ortho 6 Inch NC + Lidar	Ortho 6 Inch NC + CIR + Lidar	Ortho Commitment	Lidar Commitment
		DO4Q	Cost	Cost	Cost	Cost	Cost	Cost		
	HCAD	289	\$ 49,508.59	\$ 11,019.57	\$ 60,528.16	\$ 150,569.00	\$ 200,077.59	\$ 211,097.16	\$ 49,508.59	\$ -
	Alton	6	\$ 1,027.86	\$ 228.78	\$ 1,256.64	\$ 3,126.00	\$ 4,153.86	\$ 4,382.64	\$ 1,256.64	\$ -
	Edinburg	54	\$ 9,250.74	\$ 2,059.02	\$ 11,309.76	\$ 28,134.00	\$ 37,384.74	\$ 39,443.76	\$ 9,250.74	\$ -
	McAllen (includes ETJ)	80	\$ 13,704.80	\$ 3,050.40	\$ 16,755.20	\$ 41,680.00	\$ 55,384.80	\$ 58,435.20	\$ 16,755.20	\$ -
	Pharr	3	\$ 513.93	\$ 114.39	\$ 628.32	\$ 1,563.00	\$ 2,076.93	\$ 2,191.32	\$ 628.32	\$ 1,563.00
	San Benito	11	\$ 1,884.41	\$ 419.43	\$ 2,303.84	\$ 5,731.00	\$ 7,615.41	\$ 8,034.84	\$ 1,884.41	\$ -
	BPUB	136	\$ 23,298.16	\$ 5,185.68	\$ 28,483.84	\$ 70,856.00	\$ 94,154.16	\$ 99,339.84	\$ 23,298.16	\$ -
	Port Isabel	6	\$ 1,032.00	\$ 228.78	\$ 1,260.78	\$ 3,126.00	\$ 4,158.00	\$ 4,386.78	\$ 1,032.00	\$ -
	LMWD	20	\$ 3,440.00	\$ 762.60	\$ 4,202.60	\$ 10,420.00	\$ 13,860.00	\$ 14,622.60	\$ 3,440.00	\$ -
	TOTALS	605	\$ 103,660.49	\$ 23,068.65	\$ 126,729.14	\$ 315,205.00	\$ 418,865.49	\$ 441,934.14	\$ 107,054.06	\$ 1,563.00
									Project Total	\$108,617.06

LRGV Orthoimagery + Lidar	Tetra Tech sub Keystone Aerial Surveys sub Watershed Sciences	Ortho 6 Inch NC		Ortho 6 Inch CIR Buy-Up	Ortho 6 Inch NC + CIR	LIDAR	Ortho 6 Inch NC + Lidar	Ortho 6 Inch NC + CIR + Lidar	Ortho Commitment	Lidar Commitment
		DO4Q	Cost	Cost	Cost	Cost	Cost	Cost		
	HCAD	1000	\$ 171,310.00	\$ 38,130.00	\$ 209,440.00	\$ 521,000.00	\$ 692,310.00	\$ 730,440.00	\$ 171,310.00	\$ -
	Alton	6	\$ 1,027.86	\$ 228.78	\$ 1,256.64	\$ 3,126.00	\$ 4,153.86	\$ 4,382.64	\$ 1,256.64	\$ -
	Edinburg	54	\$ 9,250.74	\$ 2,059.03	\$ 11,309.76	\$ 28,134.00	\$ 37,384.74	\$ 39,443.76	\$ 9,250.74	\$ -
	McAllen (includes ETJ)	131	\$ 22,441.61	\$ 4,995.08	\$ 27,436.64	\$ 68,251.00	\$ 90,692.61	\$ 95,687.64	\$ 27,436.64	\$ -
	Pharr	41	\$ 7,023.71	\$ 1,563.33	\$ 8,587.04	\$ 21,361.00	\$ 28,384.71	\$ 29,948.04	\$ 8,587.04	\$ 1,563.00
	San Benito	11	\$ 1,884.41	\$ 419.43	\$ 2,303.84	\$ 5,731.00	\$ 7,615.41	\$ 8,084.84	\$ 1,884.41	\$ -
	BPUB	285	\$ 48,823.35	\$ 10,867.05	\$ 59,690.40	\$ 148,485.00	\$ 197,308.35	\$ 208,175.40	\$ 48,823.35	\$ -
	Port Isabel	6	\$ 1,032.00	\$ 228.78	\$ 1,260.78	\$ 3,126.00	\$ 4,158.00	\$ 4,386.78	\$ 1,032.00	\$ -
	LMWD	20	\$ 3,440.00	\$ 762.60	\$ 4,202.60	\$ 10,420.00	\$ 13,860.00	\$ 14,622.60	\$ 3,440.00	\$ -
	TOTALS	1554	\$ 266,233.68	\$ 59,254.02	\$ 325,487.70	\$ 809,634.00	\$ 1,075,867.68	\$ 1,135,121.70	\$ 273,020.82	\$ 1,563.00
									Project Total	\$274,583.82

Future

- Education
- The Need for Maps
- Many Requests
- Online for the Public
- MOTS – ArcReader
- ArcGIS Online
- ArcServer

Hybrid

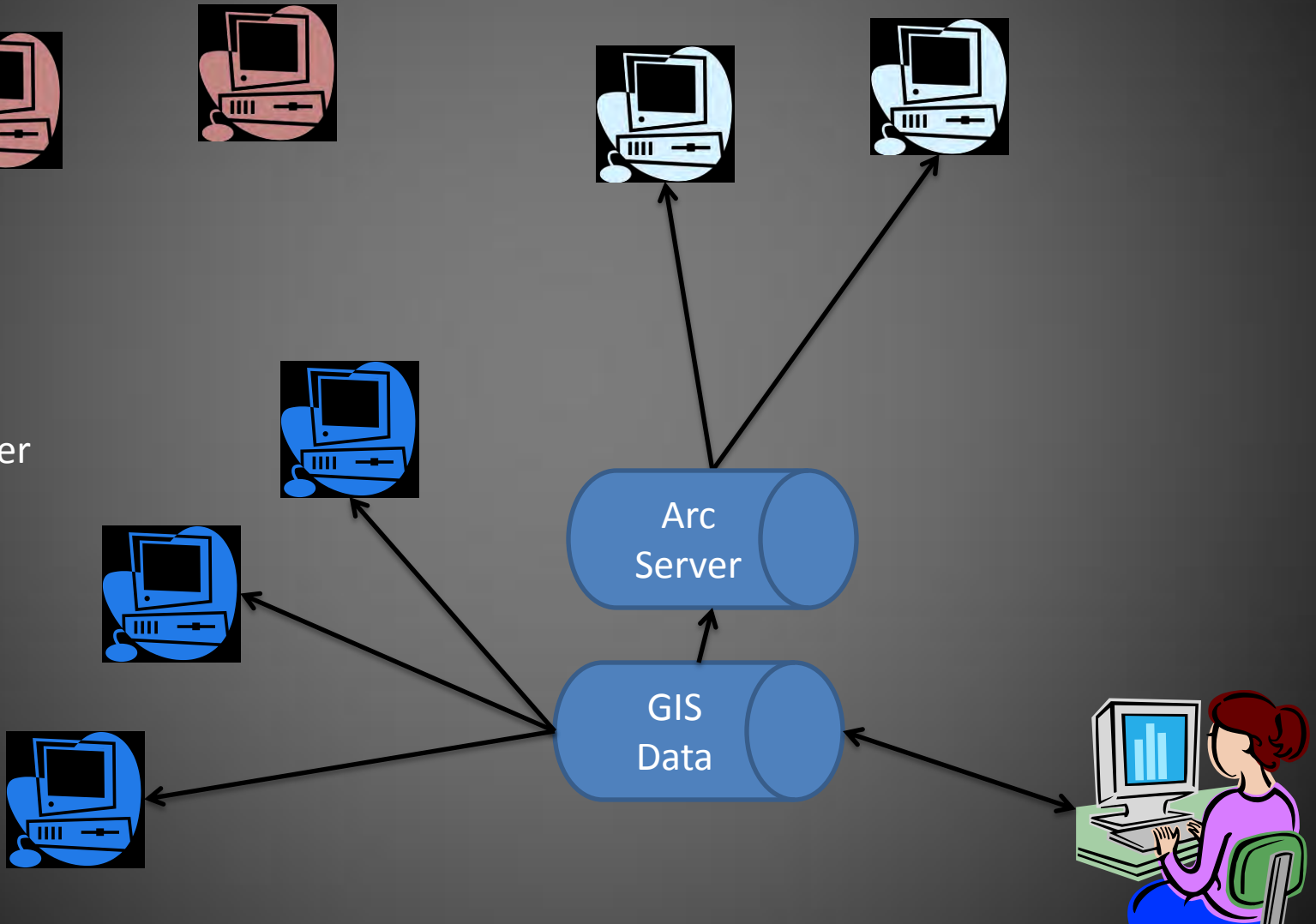
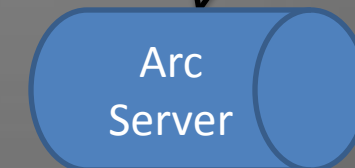
Mobile



WEB Users



ArcReader



Contact & General Information

- <http://www.gis.com/>
- <http://www.esri.com/>
- <http://www.arcgis.com/>
- <http://www.tnris.org/>
- david.flores@pharr-tx.gov

QUESTIONS