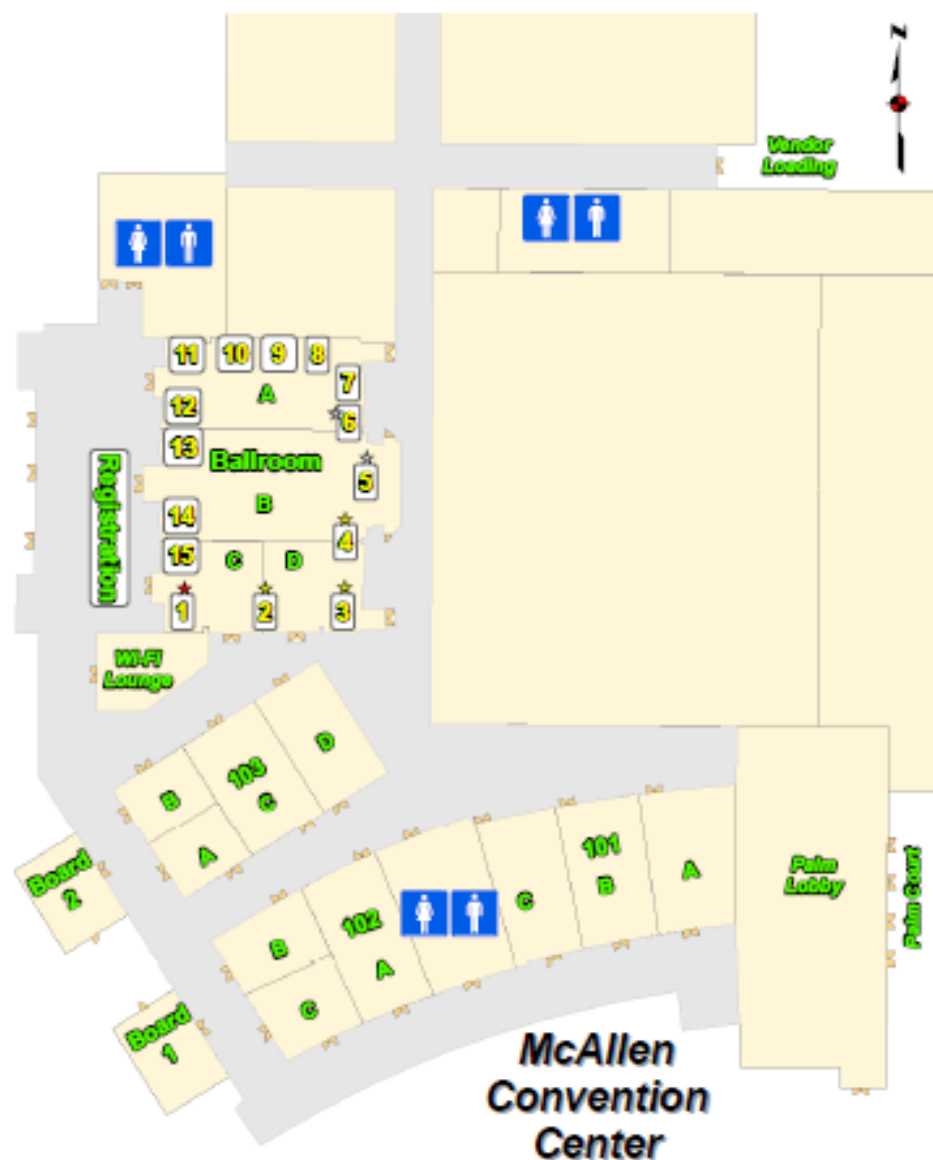


The City of Palms Welcomes
22nd Annual
South Central Arc User Group Conference



McAllen, Texas
March 26th — 30th, 2012



- | | |
|--------------------------------------|----------------------------------|
| 1. Western Data Systems★ | 9. CDM |
| 2. Surdex★ | 10. RazorTek |
| 3. Geocortex - Latitude Geographics★ | 11. United Geo Technologies LLC. |
| 4. Teach Me GIS★ | 12. USGS |
| 5. ESRI★ | 13. Aerial Services, Inc. |
| 6. Atkins★ | 14. NTB |
| 7. Applied Field Data Systems | 15. CityWorks |
| 8. EnerGov | |

★ Platinum Sponsor

★ Gold Sponsor

★ Silver Sponsor

Please take a moment to thank the vendors for their interest & contributions to SCAUG over the years.

TABLE OF CONTENTS

Vendor & Meeting Room Layout	Front Inside Cover
Letter from President	1
New SCAUG Logos	2
Officers	3
General Agenda	4
Save the Date	6
Special Recognition	6
Events Summary	7
Vendor Sponsorships	9
ESRI Technical Session Schedule	11
User Presentation Session Schedule	12
ESRI Technical Session Abstracts	13
User Presentation Session Abstracts	15
Vendor Biographies	20
GISP Checklist	31
Things to Do in McAllen	32

LETTER FROM PRESIDENT

Welcome to the 22nd Annual South Central Arc User Group Conference. We would like to welcome you to the City of Palms better known as McAllen, Texas. The Rio Grande Valley has always been known for its growth and productivity. The GIS profession in this region is obviously following in the same solid footsteps. This area is seeing unprecedented growth in spite of the economic climate that has impacted so many. GIS is proving to be the perfect tool to manage this rapid growth. Whether this is your 1st conference or your 22nd we hope that you find our event to be a wonderful resource both professionally and personally to help you perform your job easier, faster, and more efficiently.

Take the next few days to visit with old friends and make new ones. My challenge for you during this conference is to discover solutions to your real world problems, find that professional zeal that made you choose this as your livelihood, and build a solid network for you to take home. Those are the most valuable resources you can take from this conference. Use this time wisely to establish those contacts that you find no where else. Each of us want to leave a conference with a stack of names to use as personal resources but don't forget to return the favor to others. Remember how nice it feels to find the solution to a problem you are having at work? It feels even better to be that resource to someone else. Every person at this conference brings a unique perspective to the profession that we all can learn from. That professional depth and diversity is what makes SCAUG such a valuable tool to each of its members.

Take a moment at some point during this conference to thank the vendors, the McAllen Convention & Visitors Bureau, the local Rio Grande Valley Arc User Group, the Lower Rio Grande Valley Development Council 9-1-1 Department, and the Regional SCAUG Officers for dedicating many tireless hours and personal resources to make this conference a success. Without that personal commitment, this conference and SCAUG as a whole would not exist.

Have a safe trip home and look for more SCAUG events in your area. If you have a suggestion concerning training or other ideas contact a Regional SCAUG Officer in your area. That is how this whole thing got started 22 years ago, with a need and desire to bring the GIS community together as a unified group. For details on that interesting story check our website in the upcoming year.



Sincerely,
Charles Brady III, GISP
Regional SCAUG President



NEW SCAUG LOGOS

This year SCAUG is unveiling new logos to emphasize a cohesive design for the overall organization as well as the diverse strength of the individual chapters. This new look hopefully will be one that you come to associate with the professional resource you use on a daily basis.



OFFICERS

President: Charles E. Brady III, GISP
City of Ardmore

Vice President: Shellie Willoughby, GISP
Oklahoma Conservation Commission

Treasurer: James Allen
Carter County, Oklahoma

Secretary: Katy Rich
Chesapeake Midstream

Past President: Joe Chapa, GISP
Principal Meridian Consulting

Conference Coordinator: Lydia Saucedo, GISP
CPS Energy

Conference Coordinator Elect: Betsi Chatham, GISP
City of Fort Worth

North Texas Representative: Anne Mackey, GISP
Tarrant County Transportation

South Texas Representative: Kari Page-Prell
Southwestern Energy Corp

Louisiana Representative: Shane Diaz
Montgomery County Emergency Communication District

Mississippi Representative: Lauralee Gann
Mendrop-Wages, LLC

ESRI Representative: Karen Lizcano
ESRI - San Antonio



GENERAL AGENDA

	Monday, March 26th	
TIME	EVENT	PLACE
7:00am to 8:00am	Breakfast	Marriott Courtyard
8:00am to 8:30am	Shuttle To	Convention Center
8:00am to 9:00am	Registration	Convention Center
9:00am to 5:00pm	Introduction to ArcGIS Server	Boardroom 1
9:00am to 5:00pm	ArcGIS Desktop III: GIS Workflows & Analysis	103C
9:00am to 5:00pm	Managing Imagery Using ArcGIS	103D
9:00am to 5:00pm	GPS Data Acquisition & Processing	103AB
12:00pm to 1:00pm	Lunch On Your Own	
5:00pm to 6:00pm	Shuttle To	Marriott Courtyard
	Tuesday, March 27th	
TIME	EVENT	PLACE
7:00am to 8:00am	Breakfast	Marriott Courtyard
8:00am to 8:30am	Shuttle To	Convention Center
8:00am to 9:00am	Registration	Convention Center
9:00am to 5:00pm	Introduction to ArcGIS Server	Boardroom 1
9:00am to 5:00pm	ArcGIS Desktop III: GIS Workflows & Analysis	103C
9:00am to 5:00pm	Managing Imagery Using ArcGIS	103D
9:00am to 5:00pm	Python for Geoprocessing in ArcGIS	103AB
12:00pm to 1:00pm	Lunch On Your Own	
5:00pm to 6:00pm	Shuttle To	Marriott Courtyard
6:00pm to 8:00pm	Registration Meet & Greet	Marriott Courtyard
	Wednesday, March 28th	
TIME	EVENT	PLACE
7:00am to 8:00am	Breakfast	Marriott Courtyard
7:30am to 8:30am	Shuttle To	Convention Center
8:00am to 5:00pm	Registration	Convention Center
8:00am to 5:00pm	Internet Café/Computer Lab	103AB
9:00am to 10:15am	SCAUG Business	Ballroom
10:15am to 10:30am	Morning Break	Convention Center
10:30am to 11:30am	ESRI Plenary	Ballroom
11:30am to 1:30pm	BBQ Lunch Gathering	Oval Park Fountain
1:30pm to 5:00pm	ESRI Technical Sessions	Convention Center
4:00pm to 6:00pm	Vendor Set-Up	Ballroom
5:00pm to 5:30pm	Shuttle To	Marriott Courtyard
5:30pm ~	On Your Own	17th Street/McAllen

GENERAL AGENDA

	Thursday, March 29th	
TIME	EVENT	PLACE
7:00am to 8:00am	Breakfast	Marriott Courtyard
7:30am to 8:30am	Shuttle To	Convention Center
8:00am to 12:00pm	Registration	Convention Center
8:00am to 4:00pm	Vendor Hall	Ballroom
8:00am to 3:00pm	Map Gallery	Ballroom
8:00am to 5:00pm	Internet Café/Computer Lab	103AB
8:00am to 9:15am	Vendor Visit	Ballroom
9:15am to 10:15am	Session Track I	Convention Center
10:30pm to 11:30pm	Session Track II	Convention Center
11:30pm to 1:30pm	Vendor Networking Lunch	Ballroom
1:30pm to 2:30pm	Session Track III	Convention Center
2:30pm to 4:00pm	Vendor Visit/Break	Ballroom
3:30pm to 4:00pm	Vendor Ticket Prizes & Map Gallery Awards	Ballroom
4:00pm to 4:30pm	Shuttle to	Marriott Courtyard
5:00pm to 6:00pm	Border Social	Marriott Courtyard
6:00pm ~	On Your Own	17th Street/McAllen
	Friday, March 30th	
TIME	EVENT	PLACE
7:00am to 8:00am	Breakfast	Marriott Courtyard
7:30am to 8:30am	Shuttle To	Convention Center
9:00am to 12:00pm	Rio Grande Valley Arc User Group Meeting	Boardroom 1
9:00am to 12:00pm	Internet Café/Computer Lab	103AB
9:00am to 12:00pm	Map Gallery	103c
9:00am to 10:00am	Alamo Area GIS User Group Meeting	103D
12:00pm to 12:30pm	Shuttle To	Marriott Courtyard



SAVE THE DATE

ESRI International User Conference

July 23rd – 27th, 2012
San Diego, California

15th Annual

Oklahoma South Central Arc User Group Conference

September 24th, 2012
Oklahoma City, Oklahoma

23rd Annual

South Central Arc User Group Conference

April 7th – 12th, 2013
Addison, Texas

A HUGE THANK YOU TO:

Lower Rio Grande Valley Development Council

9-1-1 Department
Sergio Castro & Staff

McAllen Convention & Visitors Bureau

Trisha D. Watts

**For their incredibly hard work, dedication, and support
throughout the planning and marketing of the conference**

**Special thanks to the following agencies for
allowing their employees to volunteer to serve on
the SCAUG Board:**

Carter County, Oklahoma
Chesapeake Midstream
City of Ardmore
City of Fort Worth
CPS Energy
ESRI
Oklahoma Conservation Commission
Mendrop-Wages, LLC
Montgomery County Emergency Communication District
Principal Meridian Consulting
Southwestern Energy Corp
Tarrant County



EVENTS SUMMARY

Breakfast at the Marriott Courtyard

Monday, March 26th - Friday, March 30th

7:00am – 8:00am

During your stay at the Marriott Courtyard take advantage of the complimentary hot breakfast and fresh brewed coffee every morning. Get a full breakfast and then take the shuttle over to the McAllen Convention Center.

17th Street District

Monday, March 26th - Thursday, March 29th

Nights Out

Ready for a night on the town, or just want to grab some dinner? McAllen's 17th Street District has something for every taste with a variety of pubs, clubs, lounges, and restaurants. For a list of establishments visit www.exploremcallen.com and go to the Night Life/17th Street link. Free shuttles will be running nightly from the Marriott Courtyard.

Meet & Greet at Marriot Courtyard

Tuesday, March 27th

6:00pm - 8:00pm

Start your conference week off by attending the NTB & Associates sponsored Meet & Greet at the Marriot Courtyard. Catch up with old and meet the new over drinks and finger foods.

Opening Business & ESRI Plenary in Ballroom

Wednesday, March 28th

9:00am - 11:30am

The official kickoff of the conference includes annual SCAUG business items: conference materials and agenda, Founders and Thumbs Up Awards, announcement of 2012-2013 SCAUG Officers and 2013 conference details. Following these business items ESRI staff will host the plenary with a presentation highlighting new and upcoming technologies from ESRI.

Internet Café/Computer Lab Room in 103AB

Wednesday, March 28th - Friday, March 30th

8:00am – 5:00pm

Need to check your email or dial into work, and don't have a computer? Swing by the Internet Café/Computer Lab to answer emails or check in with the boss. Several computers with hard-line internet will be available in a comfortable workspace.

BBQ Lunch Gathering in Oval Park

Wednesday, March 28th

11:30am - 1:30pm

Join us for lunch outside at Oval Park in front of the McAllen Convention Center. . After lunch, come hear what ESRI has been working on by attending Technical Sessions.

Longhorn BBQ Buffet

Mixed Texas Greens with Tear Drop Tomatoes & Cucumbers

Jicama and Carrot Cole Slaw with Apple Cider Vinaigrette

Grilled Chicken with Chipotle Barbeque Sauce

Sliced Barbequed Brisket with Fried Jalapeno Onions

Buttered Corn on the Cob

Whipped Golden Yukon Mashed Potatoes

Hearth Baked Dinner Rolls & Creamy Whipped Butter

Hot Peach Cobbler

Iced Tea & Lemonade



Vendor Hall in Ballroom

Thursday, March 29th

8:00am - 4:00pm

The conference schedule has special Vendor Visit Times throughout the day to accommodate more one-on-one time to see the innovative technologies and solutions our vendors have to offer. Inside your conference name badge you should find two tickets that can be placed in any of the Vendor Ticket Prize Drawings. Be sure to hit up vendors for extra tickets to submit, which gives you a better chance of being a drawn winner. Winners can only win one prize! Remember to place your name and phone number on ticket to claim your prize. Prizes and submittal boxes will be showcased at Registration.

Map Gallery in Ballroom

Thursday, March 29th

8:00am - 3:00pm

Your colleagues have taken research and analysis and put it on the map! The Map Gallery provides a visual sense of the power of geospatial technology. Between sessions walk through the Map Gallery to see many of our colleagues' projects. Don't forget to cast your ballot for the Map Gallery no later than 3:00pm.

Vendor Networking Lunch in Ballroom

Thursday, March 29th

11:30am - 1:30pm

Meet in the Vendor Hall for lunch, networking and casual conversation.

Italian Buffet

Tossed Garden Salad

Chicken Parmesan

Beef Lasagna

Angel Hair Pasta & Vegetable Medley

Garlic Bread Sticks & French Crostini Bread

Iced Tea & Brewed Coffee

Vendor Ticket Prizes & Map Gallery Awards in Ballroom

Thursday, March 29th

3:30pm - 4:00pm

Be sure to stay and congratulate the winners of the Vendor Ticket Prizes and Map Gallery. You might be one of the lucky winners yourself!

Border Social at Marriott Courtyard

Thursday, March 29th

5:00pm - 6:00pm

Unwind after a day of conferencing by partaking in the 49-year-old tradition of Border Buttermilk. The drink is a "south-of-the-border" mixture, not actually buttermilk at all, but a frozen pink lemonade and tequila drink, which has become a city trademark. McAllen Greeters will be pouring these complimentary concoctions for one hour, and then you can go enjoy the town.

Rio Grande Valley Arc User Group Meeting in Boardroom 1

Friday, March 30th

9:00am - 12:00pm

The Rio Grande Valley Arc User Group (RGVAUG) is committed to advancing the Geographic Information System (GIS) profession through varied activities such as exchanging knowledge, promoting academic studies of GIS, as well as providing training and services to its members and the general public. Our membership spans from Webb County down through Cameron County.

Alamo GIS User Group in 103D

Friday, March 30th

9:00am - 12:00pm

If you think you might be interested in participating in the San Antonio area, come see the year in review for the Alamo GIS User Group. We will discuss San Antonio GIS Day and Quarterly Meetings from 2011, as well as take input for our future meetings.



VENDOR SPONSORSHIPS

PLATINUM



GOLD



SILVER



ESRI LIGHTENING TALKS

Thursday, March 29th

ESRI Booth in Vendor Hall

We'll be delivering the following short presentations; join us and learn how Esri can help you and your organization accomplish your goals.

8:30am	ArcGIS Online
9:00am	Community Analyst
9:30am	Quick Tips & Tricks
10:00am	Land Records
10:30am	ArcGIS Mobile
11:00am	Tablets & Smart Phones
11:30am	ArcLogisitcs
12:00pm	Community Maps
1:00pm	Lidar in ArcGIS
1:30pm	ArcGIS Online
2:00pm	Community Analyst
2:30pm	ArcGIS Server in the Cloud
3:00pm	Land Records
3:30pm	Tablets & Smart Phones



ESRI TECHNICAL SESSION SCHEDULE

Wednesday, March 28th

Session Track I – 1:30pm to 2:30pm

ArcGIS Online

Karen Lizcano, ESRI

Boardroom 1

ArcGIS for Government

Gary Scoffield, ESRI

103 C

Desktop Tips & Tricks

Pam Kersh, ESRI

103D

Session Track II – 2:45pm to 3:45pm

ArcGIS Online

Karen Lizcano, ESRI

Boardroom 1

Update on Community Maps

Gary Scoffield & Brig Bowles, ESRI

103C

Public Works Solutions

Pam Kersh, ESRI

103D

Session Track III – 4:00pm to 5:00pm

Creating a Simple Web Application

Karen Lizcano, ESRI

Boardroom 1

What's New in 10.1

Brig Bowles, ESRI

103C

Local Governmental Data Model

Pam Kersh, ESRI

103D



USER PRESENTATION SCHEDULE

Thursday, March 29th

Session Track I – 9:15am to 10:15am

Integrated Stormwater Management Model for the City of Sugarland, Texas

Abigail L Bush, GISP, CFM

Boardroom 1

Stormwater GIS: Multi-Phased Integration from Scratch

Andrew Clem

Boardroom 1

So You Think You Know How Topology Works?

Kurt Menking & Agustine Solis

103 C

How Not to Migrate from Topology to Fabric

Kurt Menking & Agustine Solis

103 C

Geospatial Market Trends

Ashok Wadwani

103D

U.S. Geological Survey Historical Topographic Map Collection: Preserving the Past

Darryl S. Williams

103D

Session Track II – 10:30am to 11:30am

The National Map: Data Delivery Services

Claire DeVaughan

Boardroom 1

Making Data Useful

Donna Coggeshall

103C

Development of the Willacy County Mapbook a Manual Approach

Orlando Nino

103C

Mastering Expressions in ArcGIS

Jenny Harrison

103D

Session Track III – 1:30pm to 2:30pm

How to Display Data, Data, and More Data

Santa Rivas

Boardroom 1

Aligning Geospatial Industry Workforce Needs with Academic Programs

Dr. Phillip Davis

Boardroom 1

Using GIS and GPS to Map Caves

Kurt Menking

103C

Development of an Agency-wide GPS Technology Management Plan

Jeff Barnett

103C

So You Think You Can't Afford a GIS?

L. David Flores, Jr., CPM

103D



ESRI TECHNICAL SESSION ABSTRACTS

Wednesday, March 28th

Session Track I – 1:30pm to 2:30pm

ArcGIS Online

Karen Lizcano, ESRI

Boardroom 1

Learn how to use ArcGIS online to better manage and leverage your Organizational Information. During this session we will look at managing Users and Groups. We will also add content to ArcGIS Online including services, shapefiles, spreadsheets and layer packages. We will then look at different ways to disseminate that information via web maps, social media and online collaboration.

ArcGIS for Government

Gary Scoffield, ESRI

103 C

ArcGIS for Government has many aspects. During this session we will look at how government agencies use ArcGIS to better serve their internal users and constituents. Some of the solutions we will take a look at include the ArcGIS online, maps and apps, and the local government information model and field mobility.

Desktop Tips & Tricks

Pam Kersh, ESRI

103D

Several options are available for interacting with the ArcGIS Desktop application. These options include ways to manage the interface, enhance the mapping and editing experience, work with geoprocessing environments, and customize the user interface. This session will provide useful tips and tricks and time-saving techniques for working with the ArcMap application, and provide familiarity with some lesser known tools for enhancing the user experience.

Session Track II – 2:45pm to 3:45pm

ArcGIS Online

Karen Lizcano, ESRI

Boardroom 1

Learn how to use ArcGIS online to better manage and leverage your Organizational Information. During this session we will look at managing Users and Groups. We will also add content to ArcGIS Online including services, shapefiles, spreadsheets and layer packages. We will then look at different ways to disseminate that information via web maps, social media and online collaboration.

Update on Community Maps

Gary Scoffield & Brig Bowles, ESRI

103C

Esri's Community Maps program is in its third year and a lot will change in 2012. The Community Maps are a suite of global maps in image-cache form hosted in the cloud by Esri. The Maps work at scales from global down to 1:1000 neighborhood detail. They can be used in desktop, web and mobile environments. They're called "Community" maps because they contain an increasing amount of authoritative data contributed by participating agencies, frequently the GIS arm of cities, states or national mapping agencies.



Public Works Solutions

Pam Kersh, ESRI

103D

Public Works agencies are responsible for the planning, maintenance, and operations of public streets and related assets, parks, government facilities, and vehicle fleets. ArcGIS can be configured to manage your public assets and help you: inventory and maintain your assets, provide information to field staff, interact with your citizenry, and evaluate your organizational performance and health of your infrastructure. This session will cover some of the templates, maps, and apps that help Public Works agencies accomplish their goals, and efficiently share data and analysis across their organizations.

Session Track III – 4:00pm to 5:00pm

Creating a Simple Web Application

Karen Lizcano, ESRI

Boardroom 1

Have you created your first web mapping application yet? During this session we will talk about a few best practices for adding data layers in your map, creating mapping services and map caching. We will then publish a service and create and consume a web mapping application.

What's New in 10.1

Brig Bowles, ESRI

103C

The primary theme for ArcGIS 10.1 is sharing and collaboration. Users will find that this release makes it simpler to put mapping and geospatial analytics into the hands of more people without requiring that they be GIS experts. We will explore some of these mapping and analytic capabilities. We will also talk about Server improvements, imagery enhancements and ArcGIS Runtime.

Local Government Data Model

Pam Kersh, ESRI

103D

Learn more about how you can use the local government data model to build your own local government geodatabase. We will talk about some of the migration challenges and templates that are available to use with the data model.



USER PRESENTATION ABSTRACTS

Thursday, March 29th

Session Track I – 9:15am to 10:15am

Integrated Stormwater Management Model for the City of Sugarland, Texas

Abigail L Bush, GISP, CFM

Boardroom 1

The City of Sugarland's Integrated Stormwater Management Model (ISWMM) is a comprehensive geo-database of the City's entire drainage infrastructure and evaluation of its current operation. The geo-database was developed in ArcGIS, consisting of all applicable information for the City's drainage facilities and internal watersheds. In addition, the database will include a system wide analysis of all channels, detention ponds, and storm sewer systems on a consistent datum and set of standards. The results of these analyses will be georeferenced in the database in the form of flood mapping and organized links to the applicable hydrologic and hydraulic models.

The initial phase consisted of data collection, geo-referencing the data into GIS on a common vertical and horizontal datum, and development of the City's geodatabase. The second phase consists of performing detailed analysis for the hydrology and hydraulics of the channels and their watersheds, including analysis of storm sewer systems in areas of interest and known flooding problems. This analysis will provide the City with a system wide analysis indicating how key components operate under various flooding event scenarios.

This presentation will discuss the project goals, challenges, and potential uses for this geodatabase.

Stormwater GIS: Multi-Phased Integration from Scratch

Andrew Clem

Boardroom 1

As public and private entities continually come under financial scrutiny, the need for asset management programs and effective capital improvement planning procedures are ever-increasing. Particularly in terms of stormwater, having an inventory of the infrastructure in place is a vital component to making assessment and planning decisions. Due to strict allocations and varying project scales, it is understood that projects might have to take on a phased approach. Whether building a stormwater GIS from scratch, or updating an existing network, a multi-phased integration approach can be used to create a robust stormwater GIS system.

The City of Dallas is modernizing Love Field Airport (DAL) through the Love Field Modernization Program. As a component of this program, a stormwater master plan is being created, part of which includes building and updating the stormwater GIS network at DAL. Built into this effort is building the GIS from scratch in some areas and also includes digitizing as-builts, above ground survey, and CCTV inspections. All of these efforts get integrated into the City-wide GIS. By taking a phased approach to integration, Data-Driven Pages, SDE, and geodatabases were used to provide a steady stream of updates.

Whether a project is simple or complex, this presentation will show of how a multi-phased approach can be taken to integrate stormwater infrastructure into an existing GIS system or by starting from scratch. An overview of lessons learned and an outlook on potential complications will also be discussed.

Keywords: GIS, integration, stormwater, survey, CCTV, asset management



So You Think You Know How Topology Works?

Kurt Menking & Augustine Solis

103 C

Many of those who maintain parcel data sets have been using the ESRI parcel topology tools since the early 1990's. But I'll bet there are some things you'd be surprised to know. We will demonstrate and discuss some of the tricks for success and even disclose some of the lesser known flaws or problems with editing in topology datasets.

How Not to Migrate from Topology to Fabric

Kurt Menking & Augustine Solis

103 C

BCAD recently migrated from parcel topology to the new parcel fabric database. We will give lots of hints, ideas, and recommendations for those considering the migration. We made plenty of mistakes, which we'll outline, and discuss how we should have done things differently. We'll also spend some time describing what the fabric is, how it works, and a user perspective of benefits, and drawbacks.

Geospatial Market Trends

Ashok Wadwani

103D

Since past few years, there has been various mergers and acquisitions in the GEOSPATIAL market place. This trend is continuing and will continue. Another major trend in our industry is cost cutting /cost sharing policies. Both of these trends directly impact the new product innovations and customer service. Unless the user community puts the pressure, we will all be hit with higher prices, lower service levels, less competition and less product innovations. The presentation will cover the trends in detail and provide suggestions for changing these trends.

U.S. Geological Survey Historical Topographic Map Collection: Preserving the Past

Darryl S. Williams

103D

For more than 125 years, the U.S. Geological Survey (USGS) topographic maps have accurately portrayed the complex geography of our Nation. The Historical Topographic Map Collection scanning will provide a comprehensive digital repository of USGS topographic maps, available to the public at no costs. As physical and cultural features change over time, maps are updated, revised and new editions printed. A series of maps covering the same geographic area published over a period of time can show how an area looked before development and provide a detailed view of changes over time.

The goal of the Historical Topographic Map Collection is to scan all scales and all editions of the more than 200,000 topographic maps published by the USGS since the inception of the topographic mapping program in 1884. These maps are either no longer available for distribution in print or are being replaced by the new generation of US Topo maps. The National Geospatial Program (NGP) is accurately cataloging and creating metadata to accompany the high-resolution, georeferenced digital files representing the legacy lithographic maps. Historical Topographic maps are available free on the web through the USGS Store and The National Map Viewer.

Session Track II – 10:30am to 11:30am

The National Map: Data Delivery Services

Claire DeVaughan

Boardroom 1

The National Map comprises a variety of products and services that provide the Nation with access to base geospatial information to describe the landscape of the United States. The National Map supports data download, digital and print versions of topographic maps, geospatial data services, and online viewing. This presentation will provide an overview of how The National Map web services and data download capabilities can be easily accessed.



and used to support a variety of project needs. Emphasis will be on use of The National Map viewer, learning how to download and access The National Map data, and understanding the variety of new web map services that are available.

Making Data Useful

Donna Coggeshall

103C

Data analysis is a critical function of successful organizations. Data must be collected, assessed, stored, and managed. To provide value, it must be converted to useful information through combinations with other data and analytical processes to create meaning and worth.

Most data can be geographically referenced. The locational component of the data can, just by itself, add value. Virtually all data collected by governmental entities has a geographic reference. As a result, geographic information system (GIS) technology is important for analyzing and displaying data to add to its worth for businesses and governmental entities.

The North Central Texas Council of Governments' Research and Information Services Department has experience transforming data into useful information and using GIS technology to make that data available in informative and convenient formats. The latest offering is the Research and Information Services Network (RISN), a framework designed to meet a wide range of data needs.

Through RISN, data users have a variety of data access options including the dynamic RISN Viewer, which maximizes data exploration through interactive tools and reporting. Built on our established, award-winning, web mapping program, iCommunities, the RISN viewer provides data to customers in a format that is easily understood, accessible, informational, operationally useful and adds value through savings and cost avoidance, thereby making data useful.

Development of the Willacy County Mapbook a Manual Approach

Orlando Nino

103C

The Lower Rio Grande Valley Development Council, 9-1-1 Department, is the official addressing authority for Hidalgo and Willacy Counties. Both counties have approximately 800,000 residents. A major duty of the 9-1-1 Department is to provide legal 9-1-1 addresses to all structures including towers, lift stations and other utilities. As the 9-1-1 agency for both counties it is vital to provide first responders tools to minimize response times where help is needed. Willacy County is sparsely populated with many rural homes and a mapbook is invaluable for this type of scenario. With the addition of data driven pages in ArcDesktop 10 the creation of mapbook has been simplified. This presentation will focus on the development of the Willacy County mapbook by a non-scripting method from the planning process all the way to the dissemination of the mapbook to the end users.

Mastering Expressions in ArcGIS

Jenny Harrison

103D

There are different types of expressions used throughout ArcMap, including display expressions, query expressions, and calculator expressions. The display expression is used to differentiate between one feature and the next (formerly known as the Primary Display Field). Query expressions are used whenever a filter is applied based on the attributes of the features. Calculator expressions are used in the Field Calculator to modify tables. Each of these types of expressions can be used in a simple way with single fields or operations, or in a complex way using functions and variables. Learn where these expressions can be used, how to write basic expressions, and how to build complex expressions that harness the true power of these tools. This workshop will help you master expressions, no matter which version of ArcGIS you are using.



Session Track III – 1:30pm to 2:30pm

How to Display Data, Data, and More Data

Santa Rivas

Boardroom 1

Creating exhibits and displaying several layers of data can be very challenging and even those with experience can be overwhelmed with the amount of data to be displayed in one single exhibit. The key goal is to convert and transform the data into useful information in the form of an exhibit, which the end user can use to conduct a valid analysis and to make better decisions.

A good exhibit is detrimental to the daily function of the Wastewater Master Planning team (WWMP) since it is referenced on a daily basis by the group. Millions of dollars in proposed wastewater capital improvement projects (CIPs) are geographically depicted in the Wastewater Infrastructure Plan (WWIP) exhibit, as well as other related data. The WWIP exhibit makes coordination efforts between departments and other agencies a lot easier.

The beauty of using GIS is that once the mxd has been created and the data has been properly stored in a designated Geodatabase, it can be easily revised (edited), making it easier to manage while making revisions and updates as changes occur. That is why Geographic information system (GIS) software is useful in accomplishing this challenging task.

Aligning Geospatial Industry Workforce Needs with Academic Programs

Dr. Phillip Davis

Boardroom 1

The Department of Labor's Geospatial Technology Competency Model (GTCM) is the de-facto standard for the industry. The GTCM outlines the requisite knowledge, skills, and abilities (KSA) required by workers in the industry, from technician level to manager and scientist. The GTCM covers all three sectors of our industry, and is critically important to hiring managers, supervisors, human resource managers, and line supervisors since they must select, hire, and manage geospatial workers. This presentation will provide how the GeoTech Center assisted in developing the GTCM, our work to improve upon its depth of detail and our GTCM Model Course Curriculum that can be used by industry and educators to develop training and education programs that align their graduates with the latest industry needs. Participants will receive free access to our GTCM model course server where they can download the curriculum for their own use or adaptation. We will examine our GTCM self-assessment tool and quiz that may become the basis for the new GISP skills exam proposed for 2015. See how you can join our GeoTech Center mentoring program and earn valuable education points towards your own GISP certification or community service requirement.

Using GIS and GPS to Map Caves

Kurt Menking

103C

Kurt will first describe techniques used in cave surveying and mapping. Then he will discuss how GIS and GPS can play useful roles in the process. There will be photos of surveying techniques, and map demos as well as some use of 3D views to show caves relationships with the 3D surface terrain.

Development of an Agency-wide GPS Technology Management Plan

Jeff Barnett

103C

Over the past two decades, GPS technology has been increasingly used by many organizations without any uniform standards or management plan. It is commonly unknown within a company who is using GPS, what kinds of units are being used, and for what purposes. Therefore, the current state of GPS adoption needs to be assessed and

compared with current best practices as defined by internal users, other large agencies, and the overall GPS industry.

In 2011, a study was conducted to create a management plan to guide the Louisiana Department of Transportation and Development (LADOTD)'s use of GPS technology into the future based on those best practices. Survey methodologies and results from this study are applicable to GIS/GPS professionals in the petroleum industry because the challenges of GPS adoption like equipment standards, field use, operator training, device management, data management, documentation, and technology support are being faced here as well. This presentation will discuss that study focusing on the issues faced, methodologies, and recommendations of the resulting GPS technology management plan.

So You Think You Can't Afford a GIS?

L. David Flores, Jr., CPM

103D

Don't think you can afford a GIS? Let me show you that you can. The City of Pharr, TX has done a remarkable job in deploying their GIS throughout their organization with a lean budget all without huge consulting costs. During these challenging times the need to do more with the same or less capital outlay, organizations still have to maintain, track and plan ahead. Let me show you where we were, are now and where we are going using our GIS into the future with a GIS of One. We will look at how Pharr is using their GIS to service Economic Development, Utilities, Public Works, Engineering, Planning, E-911/Addressing and legal issues.

During the presentation will look into the collaboration efforts of our GIS Community, the Rio Grande Valley Arc Users Group (RGVAUG) and how our GIS Community helps in cost savings. We will also look at upcoming ESRI services and how they will play a role in our future.



VENDOR BIOGRAPHIES

PLATINUM

Western Data Systems is an Authorized Trimble Dealer and our only business is supplying spatial measurement and GPS related products. We do this in several ways.



1. We are a direct seller of Trimble GPS products in Texas and Oklahoma. We supply the entire Trimble line of Optical / GPS Survey, Mapping, Marine, and Seismic Products. Training, Technical Support and all Accessories your crew might need. With offices in DFW, Houston, San Antonio, Austin, McAllen, and Edmond OK. You have a GPS professional within close proximity to you at all times.

2. We offer fully integrated GPS based Hydrographic systems anywhere in the United States, complete with training and support.

3. We offer spatial measurement items including Lasers, Laser Scanners, GPS cameras, Bar Code scanners, Ground Penetrating Radar, Pipe Locators, Tablet PCs and much more. Also multiple software options to fit your application needs.

4. We have one of the largest Trimble GPS rental pools in the world. This equipment is available to a worldwide customer base. If your rental needs are for as little as one day or as long as one year, Western Data Systems can meet your needs. There are no other GPS rental companies that can combine the amount of equipment we have available with the technical support we can and do provide our customers.

5. Full Service centers for all the Trimble products we rent and sell.

6. Western Data Systems manages the largest private VRS network in the world. The network is available to both the survey & mapping communities. www.txrtk.com Check out our website for the office nearest you. www.westerndatasystems.com



GOLD SPONSORS

Geocortex software by **Latitude Geographics**, transforms how

Geocortex® |

by Latitude Geographics®

people design, build and maintain Esri ArcGIS Server applications. By taking advantage of off-the-shelf components and a supportable infrastructure you will be able to do more – faster, cheaper and better than otherwise possible. In fact, that is what hundreds of organizations around the world have done in choosing Geocortex when seeking powerful, intuitive web-based mapping solutions. In 2010, Latitude Geographics was named one of Esri's first Platinum Business Partners as well as 2010 Partner of the Year.





Suredex has been recognized as a premier geospatial data provider since 1954, supplying accurate information on time and within budget. Our success is attributed to our focus on client satisfaction through timely delivery of quality products and continuous innovation from our

investment in staff and equipment resources. Suredex provides orthophotography; planimetric and topographic maps; LiDAR; and geographic information solutions to various counties and municipalities in North America. A distinguisher for Suredex is our focus on all phases of geospatial data services products, from acquisition—with our fleet of nine aircraft—through final production of all deliverables and data. We have a highly-trained and experienced staff that provides complete geographic solutions customized to each client's needs.



Inner Corridor Technologies, Inc. – **TeachMeGIS** – is the leader in Geographic Information Systems

(GIS) training for the petroleum industry. Staffed with GIS professionals who have extensive industry experience and are ESRI Certified Training Partners, we offer high quality training locally and across the nation, at a reasonable price. Our professional GIS consulting staff are available for short- or long-term projects. Please call us if you need help meeting your company's GIS goals.



SILVER

ATKINS

Atkins (www.atkinsglobal.com) is one of the world's leading engineering and design consultancies, employing some

17,700 people across the UK, North America, Middle East, Asia Pacific, and Europe. It has the breadth and depth of expertise to plan, design, and enable some of the world's most technically challenging and time critical infrastructure projects. Atkins has also remained at the forefront of implementing innovative geographic information system (GIS) solutions for environmental, natural resources, public utilities, land planning, and infrastructure management for nearly 20 years. Our staff comprises both GIS analysts and software developers across the company and internationally. It is the largest engineering consultancy in the UK (New Civil Engineer Consultants File 2011); and it is the 29th largest design firm in the U.S. and the 13th largest international design firm (Engineering News-Record 2011).





Since 1969, **ESRI®** has been giving customers around the world the power to think and plan geographically. The market leader in GIS, ESRI software is used in more than 300,000 organizations worldwide including each of the 200 largest cities in the

United States, most national governments, more than two-thirds of Fortune 500 companies, and more than 7,000 colleges and universities, applications, running on more than one million desktops and thousands of Web and enterprise servers, provide the backbone for the world's mapping and spatial analysis. ESRI is the only vendor that provides complete technical solutions for desktop, mobile, server, and Internet platforms. Visit us at www.esri.com.



STANDARD



Aerial Services, Inc. (ASI) is an integrated team of professionals providing premier Aerial Acquisition, Digital Ortho, Vector Mapping, Terrain & LiDAR services to government, utilities, engineers, and other geospatial customers. Based in the Iowa heartland for over 40 years, Aerial

Services' Midwestern work ethic, cutting-edge technology, and experienced staff combine to harness the power of geographic information and provide solutions you need.



Houston is a systems integrator offering GPS/GIS mapping systems. Our products include GPS receivers, Laser Range Finders, Rugged PDA'S , Tablet PC, GPS enabled camera, Field Data Collection Software, GIS software etc. We also offer GIS services such as digitizing, application development, data management, custom GIS programs and training.

Applied Field Data Systems Inc., based in



CDM Smith provides lasting and integrated solutions in water, environment, transportation, energy and facilities to public and private clients worldwide. As a full-service consulting, engineering, construction and operations firm, we deliver exceptional client

service, quality results and enduring value across the entire project life-cycle. Listen. Think. Deliver.



Cityworks®

Founded in 1986, **Cityworks Azteca Systems, Inc.** is the leading provider of GIS-centric Enterprise Management Systems. Created for local government, utilities and agencies, it is designed to leverage an organization's investment in Esri's leading GIS technology. Cityworks is powerful, scalable, and affordable, Empowering GIS for Asset Management, Permitting, Licensing™ and more.



EnerGov Solutions is a leading and global provider of innovative Land, License and software solutions designed specifically for enterprising government agencies. Enterprise software solutions offered by

EnerGov include GIS-centric process automation of land use planning & review, permitting, enforcement management, inspections, licensing, work orders and service requests.



Established in 1986, **NTB Associates, Inc. (NTBA)** has experienced significant expansion in staff and capabilities. The professional staff includes GIS application specialist, programmers, database administrators, civil and structural engineers, and land surveyors. We provide expertise in the following areas:

- GIS/GPS
- Boundary Surveys
- Topographic Surveys
- Hydrographic Surveys
- Route and Utility Surveys
- Local Roadway/Drainage Improvement
- Major Highways and Interstate Design
- Hazardous Material Surveys
- Bridges and Structural Design
- Water/Wastewater Systems

In the GIS services area, NTBA provides clients with turnkey solutions for a wide variety of issues. Our services include:

- Database design, development, and management
- Asset Management/Work Order Management
- GIS needs assessments
- Project design and management
- ArcServer implementation
- Data conversion and creation
- System integration with GIS
- GPS field collection and inventories
- User training and support
- Custom application development
- Enterprise GIS solutions





RazorTek LLC is a GIS & Remote Sensing 8(a) certified small business located in Germantown, Tennessee. Established in 2002, the firm has provided services and technology assistance to the GeoSpatial

community. RazorTek specializes in GIS training, feature extraction, product finishing, development and automation of complex systems for spatial data display and analysis. Data conversion from CAD into a GIS format and QC/QA services are also offered with our company. Also RazorTek offers the capability of doing image compression, mosaicing, reprojection with the LizardTech GeoExpress software if the processing capabilities are needed. RazorTek is also a provider for LizardTech software, aerial and satellite (Digital Globe and GeoEye) imagery including LiDAR data for the Geospatial community.



United Geo Technologies, LLC. (former Stewart Geo Technologies) is an economically disadvantaged woman-owned small business (SBA Self Certification) providing a wide range of professional services such as photogrammetry, orthophotography, parcel mapping,

and geographic information systems. UGT has two Certified Photogrammetrist's on staff, and our personnel have extensive experience in the following areas:

- Aerial Imagery Acquisition (both analog and digital)
- Airborne GPS
- CAD (MicroStation and AutoCAD)
- Digital Aerial Triangulation
- Digital Terrain Models (DTM)
- Digital Orthophotography and Mosaics
- Image Compression (MrSID, JPEG2000, ECW)
- LiDAR DTM and Contour Generation
- Parcel Mapping
- Geographic Information Services (ESRI)
- Plan and Profile
- Planimetric Feature Extraction
- Volume Computations
- Aerial Film Scanning
- Contour Generation
- Digital Elevation Models (DEM)



As the Nation's largest water, earth, and biological science and civilian mapping agency, the **United States Geological Survey (USGS)** collects, monitors, analyzes, and provides scientific understanding about

natural resource conditions, issues, and problems. The diversity of our scientific expertise enables us to carry out large-scale, multi-disciplinary investigations and provide impartial scientific information to resource managers, planners, and other customers. The National Geospatial Program (NGP) provides leadership for USGS geospatial coordination, production and service activities. The NGP, through its Geospatial Liaison Network, engages partners at State, regional, and local levels of government to develop standards and produce consistent and accurate data.



Expected to do the impossible?

Geocortex software extends and enhances ArcGIS for Server, allowing you to design, build and maintain applications perfectly tailored to your unique requirements. With Geocortex, you can minimize custom programming without sacrificing development flexibility.

Why redo work when new viewer technologies or significant Esri® releases come along? Our approach emphasizes reusability and readily accommodates change.

Hundreds of organizations around the world have chosen Geocortex because it helps them do more; faster, at less cost, and with reduced risk.

Be a superhero. Geocortex helps make it possible.



Geocortex® | by Latitude Geographics®

www.geocortex.com

© 2012 Latitude Geographics Group Ltd. All Rights Reserved. Geocortex and Latitude Geographics are registered trademarks of Latitude Geographics Group Ltd. in the United States and Canada. Other companies and products mentioned herein are trademarks or registered trademarks of their respective trademark owners. Trademarks provided under license from Esri.





- Aerial Photography
- Digital Orthophotography
- LiDAR
- Planimetric Maps
- Topographic Maps



520 Spirit of St. Louis Blvd.
Chesterfield, MO 63017

Randy Burkham
Vice President of Customer Solutions
tel: 281-232-4749
cell: 713-444-4103

A leading provider of geospatial data services.

www.surdex.com

APPLIED FIELD DATA SYSTEMS, INC
Integrated Solutions for GPS/GIS Mapping Systems & Services

YOUR SOURCE FOR:

GIS SERVICES

DIGITIZATION, APPLICATION DEVELOPMENT, CONSULTING / TRAINING

MAPPING SYSTEMS

GPS RECIEVERS, LASER RANGE FINDERS, GPS ENABLED CAMERA,
FIELD DATA COLLECTION SOFTWARE, RUGGED HANDHELD PDA
TABLET COMPUTERS, LOCATORS/MARKERS



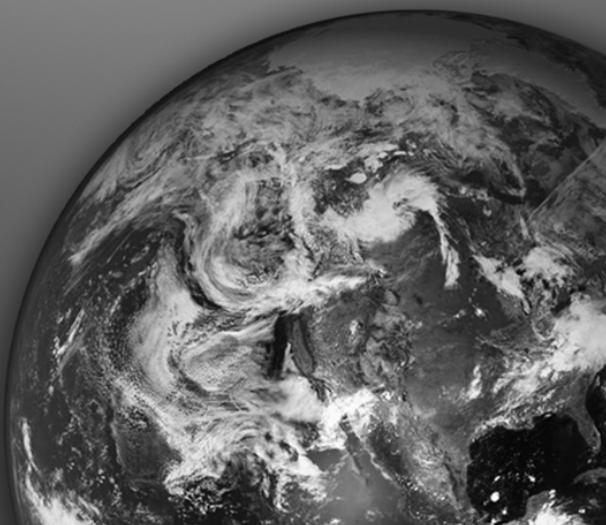
Teaching GIS Across the Globe. Call Us. We'll Come.

- A Team of ESRI Certified Training Partners
- Customized Courses
- Private On-site Classes
- Public Classes at our training center in Houston, TX

Call Us: 713-278-7883
Visit Us: TeachMeGIS.com



©ESRI. ArcView, Arc/INFO, AML and ArcGIS are trademarks, registered trademarks, or service marks of ESRI in the United States, the European Community, or certain other jurisdictions. ESRI trademarks used herein by license from ESRI.





ATKINS

Applied Technologies
Engineering
Construction
Environmental

Clear and focused enterprise GIS solutions

Atkins is at the forefront of advancing enterprise use of GIS technology with Esri's latest ArcGIS Server platform.

We are helping clients realize their visions through the use of GIS cutting-edge tools.

We're Atkins. What can we do for you today?

Plan Design Enable

www.atkinsglobal.com/northamerica

For more information, contact
Thomas W. Brown, GISP
512.342.3274

CDM
listen. think. deliver.

Water, Environment, Energy,
Transportation, Facilities

Austin 512.346.1100	El Paso 915.544.2340	Houston 713.423.7300
Dallas 214.346.2800	Fort Worth 817.332.8727	San Antonio 210.826.3200

Cityworks

Take **CONTROL** of your ASSETS.
PLAN and ANALYZE for SUCCESS.
Go **MOBILE**. Enable field workers.
Be **AWARE** of your OPERATIONS everywhere, 24/7.
ENGAGE and empower your CONSTITUENTS.

Critical Infrastructure
Code Enforcement
Inspections
Condition Assessment
Financial Analysis
License
KPI's
Work Order
Budget Planning
Citizen Engagement
Service Request
Land Development Review
Permit
Work Scheduling
Decision Support
Open 311



WORKFORCE



A REVOLUTION IN MOBILE GOVERNMENT

Powerful Mobile Inspections

Integrate with ANY Permit System

Government-centric iPad Applications



www.iGworkforce.com



NTB Associates, Inc.
Engineers - Surveyors - GIS



Experts in:

- Database Development and Management
- Data Conversion and Creation
- Utility Mapping
- Parcel Mapping
- Custom Applications
- Asset Management Solutions
- System Integration
- ESRI Authorized Training
- ArcServer Implementation
- Needs Assessment/Project Management

469.888.5044

www.ntbainc.com

Dallas / Fort Worth, TX - Shreveport, LA - Baton Rouge, LA - Little Rock, AR - Mountain Home, AR

RazorTek

Sharpen Your Technology
Satellite and Aerial Mapping

danr@razor-tek.com

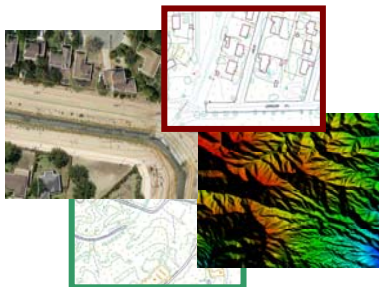
www.razor-tek.com

SBA 8(a) Certified



Patsy Ingram, President
pigram@unitedgeotech.com

Roger L. Stack,
Certified Photogrammetrist
Senior Vice President
rstack@unitedgeotech.com



*Specializing in Digital
Photogrammetric Mapping,
Orthophotography and
Geographic Information
Systems (GIS)*

United Geo Technologies LLC

Former Stewart Geo Technologies
A small woman-owned business
7715 Mainland, Suite 110
San Antonio, Texas 78250
Phone: 210.684.2147
Fax: 210.764-5022
www.unitedgeotech.com



science for a changing world



GISP CHECKLIST

22nd Annual SCAUG Conference in McAllen, Texas

Description	Classification	Credit	Recertification Credit	Credits Earned
2½ Day Regional SCAUG Conference (20 hour)				
Attendee (0.1 x # of days attended)	EDU	0.25	3.33	
Presenter (1 point per instance)	CON	1	3	
Poster Presenter (1 point per instance)	CON	1	3	
Poster Award Winner	CON	2	6	
1 Day Training (8 hour) *				
GPS Data Acquisition and Processing	EDU	0.2	1.33	
Python for Geoprocessing in ArcGIS 10	EDU	0.2	1.33	
1 Day Training Instructor : _____	EDU	3	9	
2 Day Training (16 hour) *				
Introduction to ArcGIS Server	EDU	0.4	2.67	
Managing Imagery Using ArcGIS	EDU	0.4	2.67	
ArcGIS Desktop III: GIS Workflows & Analysis	EDU	0.4	2.67	
2 Day Training Instructor : _____	EDU	3	9	
* Training Certificate required for documentation credit				

THINGS TO DO IN MCALLEN



Welcome to The McAllen Convention and Visitors Bureau

Check out what McAllen has to offer by visiting:
www.mcallencvb.com

Quinta Mazatlan World Birding Center

600 Sunset

956.681.3370 | www.quintamazatlan.com

International Museum of Art & Science

1900 Nolana

956.682.1564 | www.imasonline.org

McAllen Heritage Center

301 South Main

956.687.1904 | www.mcallenheritagecenter.com

Veteran's War Memorial of Texas

8609 N. Ware

956.631.2511 | www.mcallen.net/veterans/default.aspx

Aerial Services, Inc.

Professional Geospatial Provider Since 1967

- *Aerial Photography (Digital & Conventional)*
- *Photogrammetry*
- *Orthophotography*
- *LiDAR Surveys*
- *Topographic & Planimetric Mapping*
- *GIS Solutions*

Cedar Falls, Iowa

877-ASI-4GIS

www.aerialservicesinc.com

asi





Your Trimble Sales and Rental Specialists

Allison Alford

Houston-Southeast TX

Regional Sales Manager

14722 Regnal Street

Houston, TX 77039

O: 888-700-5211

C: 281-797-2649

Cody Cantrell

North Texas – DFW

Regional Sales Manager

545 Nolen Dr. Ste. 100

Southlake, TX 76092

O: 877-902-8112

C: 469-865-8715

Robbie Trcka

Central and West Texas

Regional Sales Manager

10822 Hillpoint

San Antonio, TX 78217

O: 877-300-9659

C: 512-826-4290



Trimble®

Authorized Dealer