

# SAVE A THOUSAND WORDS: ENVIRONMENTAL STORY MAPS



Amy Brittain  
Matt Wormus

# Story Maps 101

- A popular way to share information through ArcGIS Online
- Combined resources to present a topic as a web map
  - GIS map
  - Text
  - Photos
  - Videos

# Story Maps 101

- Story Maps provide options for presentation
  - Basic - A simple way to present one map

## NBA Mascots: Heroes of the Hardcourt

From pumping up crowds to slam dunking for show, the mascots of the National Basketball Association (NBA) each bring something special to the team they represent. The map below provides an inventory of these masked stars in action.

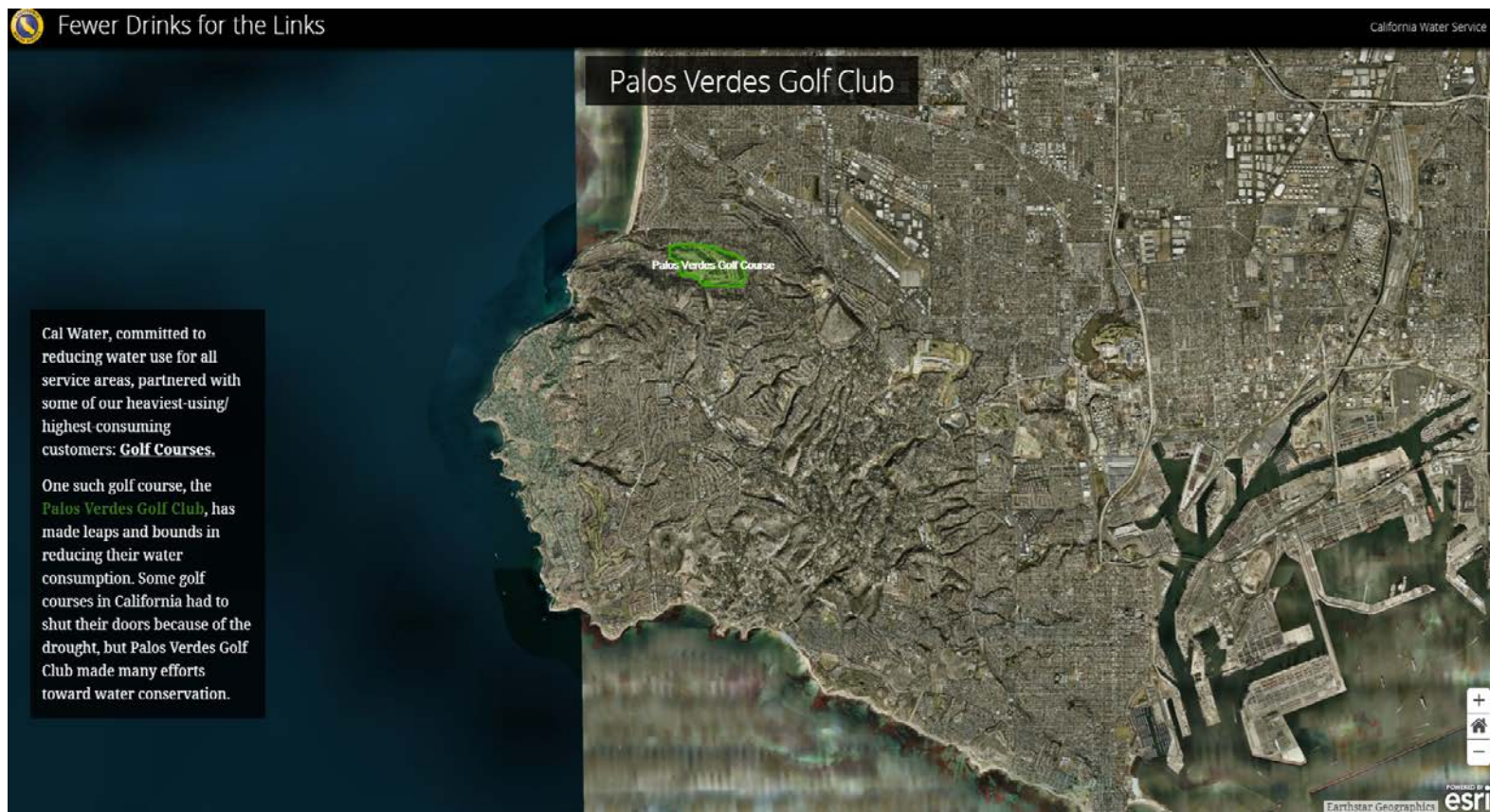
The map displays the following NBA teams and their locations:

- Western United States:** Seattle (Superman), Portland (Blazer), Sacramento (Saw), San Francisco (Warrior), Fresno (Fresno), Los Angeles (Laker), San Diego (Padre), Tijuana (Padre), El Paso (Maverick), Phoenix (Suns), Tucson (Suns), Hermosillo (Suns), Chihuahua (Suns), Culiacan (Suns).
- Central United States:** Salt Lake City (Jazz), Denver (Nugget), Kansas City (Royale), St. Louis (Hornet), Dallas (Maverick), Austin (Maverick), Houston (Rockets), San Antonio (Saber), San Luis Potosi (Saber), Monterrey (Saber), Torreon (Saber).
- Eastern United States:** Minneapolis (Timberwolves), Chicago (Bulls), Cleveland (Cavalier), Detroit (Pistons), Toronto (Raptors), New York (Knicks), Philadelphia (76er), Washington (Wizards), Charlotte (Hornet), Atlanta (Hornet), Miami (Heat), Orlando (Magic), Tampa Bay (Bolt), Jacksonville (Blaze), New Orleans (Pelican), Memphis (Grizzlies), Nashville (Predator), Knoxville (Predator), Greenville (Predator), Charlotte (Hornet), Raleigh (Hornet), Norfolk (Hornet), Richmond (Hornet), Greensboro (Hornet), Charlotte (Hornet), Charlotte (Hornet).
- Canada:** Montreal (Huskies), Ottawa (Senators), Quebec (Rangers), Halifax (Mariners), New Brunswick (Mariners), Nova Scotia (Mariners).

Copyright © 2011 Esri, HERE, DeLorme, Mapbox, Swire, NOAA, USGS, EPA, Esri

# Story Maps 101

- Cascade – Combines text with maps, images, and multimedia content with a scrolling interface





# Story Maps 101

- Journal - Combine narrative text with maps and other content

#visitcausewaycoastandglens



## Game of Thrones® Filming Locations in Causeway Coast and Glens

From the road, a manmade Iron Age island or crannóg can be seen in the middle of a lake, Lough na Cranagh. The lakes are stocked with trout and can be fished during the summer months.

### Featured Scene

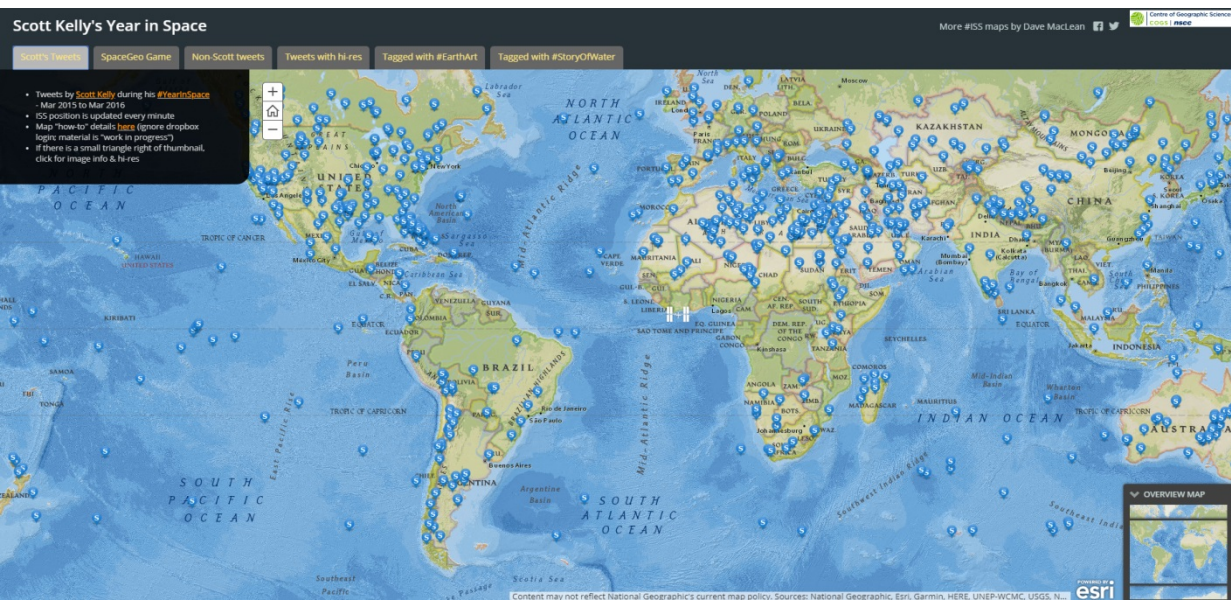
Jon arrives at Dragonstone. Daenerys demands his fealty by asking him to bend the knee. He refuses and focuses instead on convincing her that the Army of the Dead is real. Following advice from Tyrion, a skeptical Daenerys grants him access to mine the island's dragonglass. Melisandre hides her presence from Jon and leaves for Volantis.

Fair Head on the Antrim coast was used for these scenes in **Season 7 Episode 3: The Queen's Justice** and **Season 7 Episode 5: Eastwatch**.



# Story Maps 101

- Series – An easy way to browse a variety of maps in one application
  - Tabs
  - Bullets
  - Side Accordion





# Story Maps 101

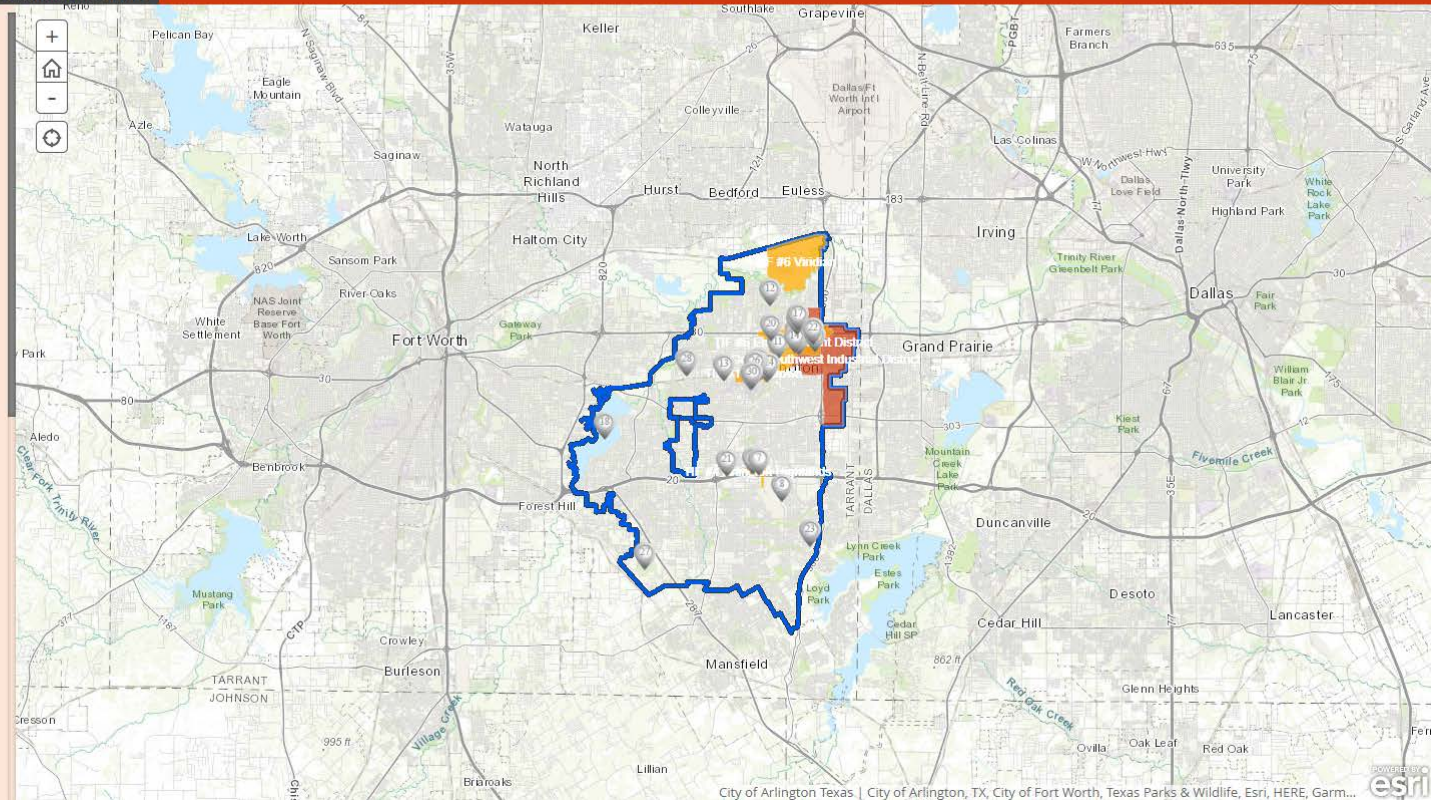
- Shortlist - Organize points of interest into tabs



ARLINGTON, TX. ALIVE WITH THE AMERICAN DREAM  
A MAP OF ECONOMIC DEVELOPMENTS WITHIN THE CITY

Office of Economic Development

Completed Projects Current Projects Points of Interest International Companies



# Story Maps 101

- Swipe/Spyglass – Allows for the user to compare two different images of the same area

## Comparing Metro and Micro Area Population Change between 2002-2003 and 2012-2013

Spurred in part by growth of the energy sector, some metropolitan and micropolitan statistical areas in North Dakota and west Texas are now experiencing rapid population gains, while growth has slowed or halted for some formerly fast-growing areas in the South and West.

A Story Map app

United States  
Census  
Bureau



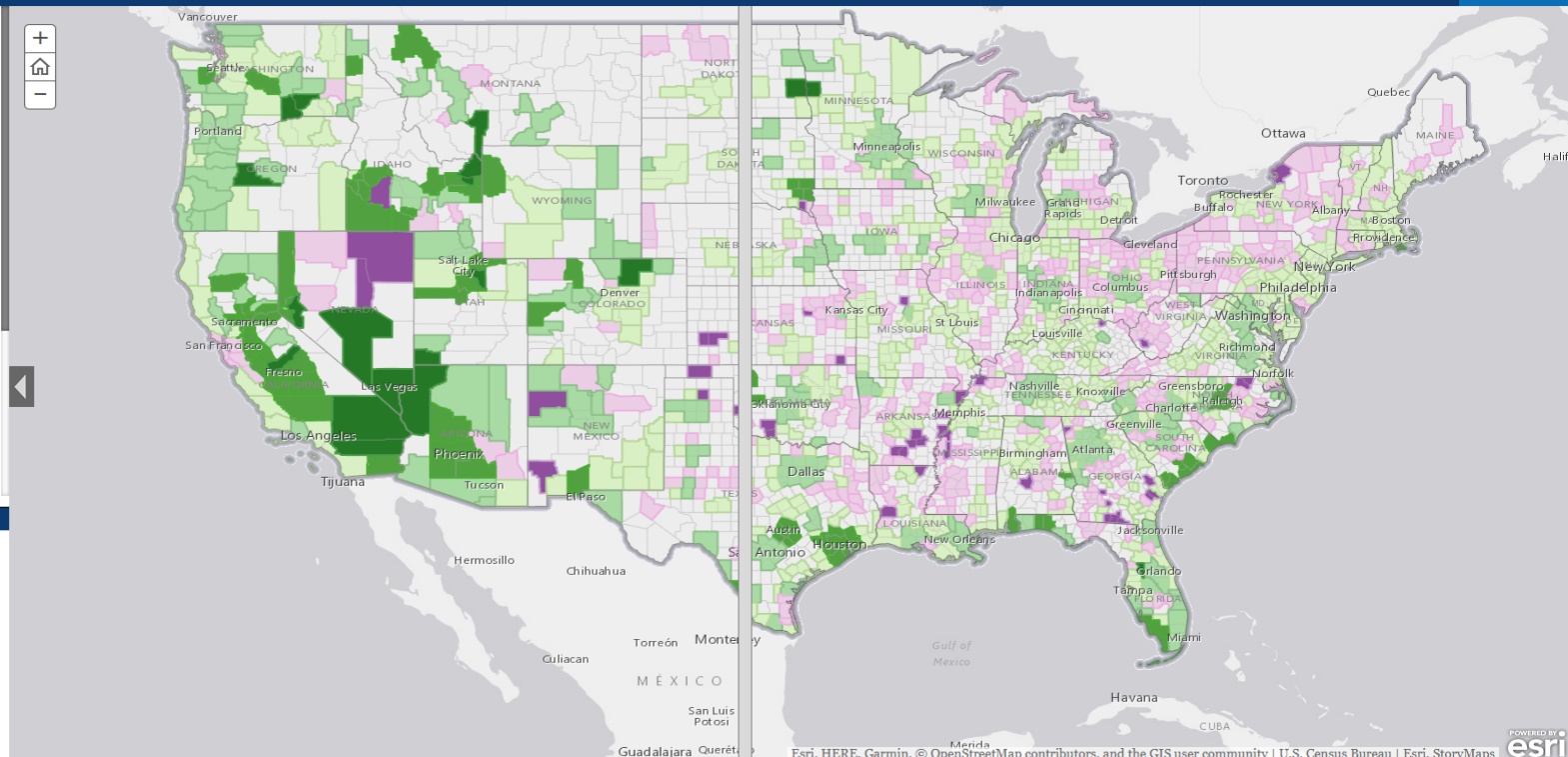
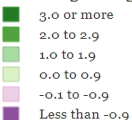
The accompanying pair of maps shows the percentage change in population for all metro and micro areas for both 2002-03 (left map) and 2012-13 (right map). The two maps have identical data categories and use the same (February 2013) set of metro and micro areas. Clicking on an area will provide a pop-up box containing the area's title and its numeric and percentage change values in each period.

Comparing the two maps with the swipe bar, we can see numerous areas where population growth has slowed. Compared with 2002-03, there are now fewer fast-growing groups of metro and micro areas in California, southern Nevada, Arizona, south Texas, and central Florida. Formerly fast-growing areas in northwest Arkansas, Delaware, and eastern Pennsylvania are now experiencing either slower population growth or, in some cases, population decline. While some of Puerto Rico's metro and micro areas were growing in 2002-03, all were losing population in 2012-13.

Population growth has increased for some metro and micro areas, notably in regions of

### Legend

#### Percentage change





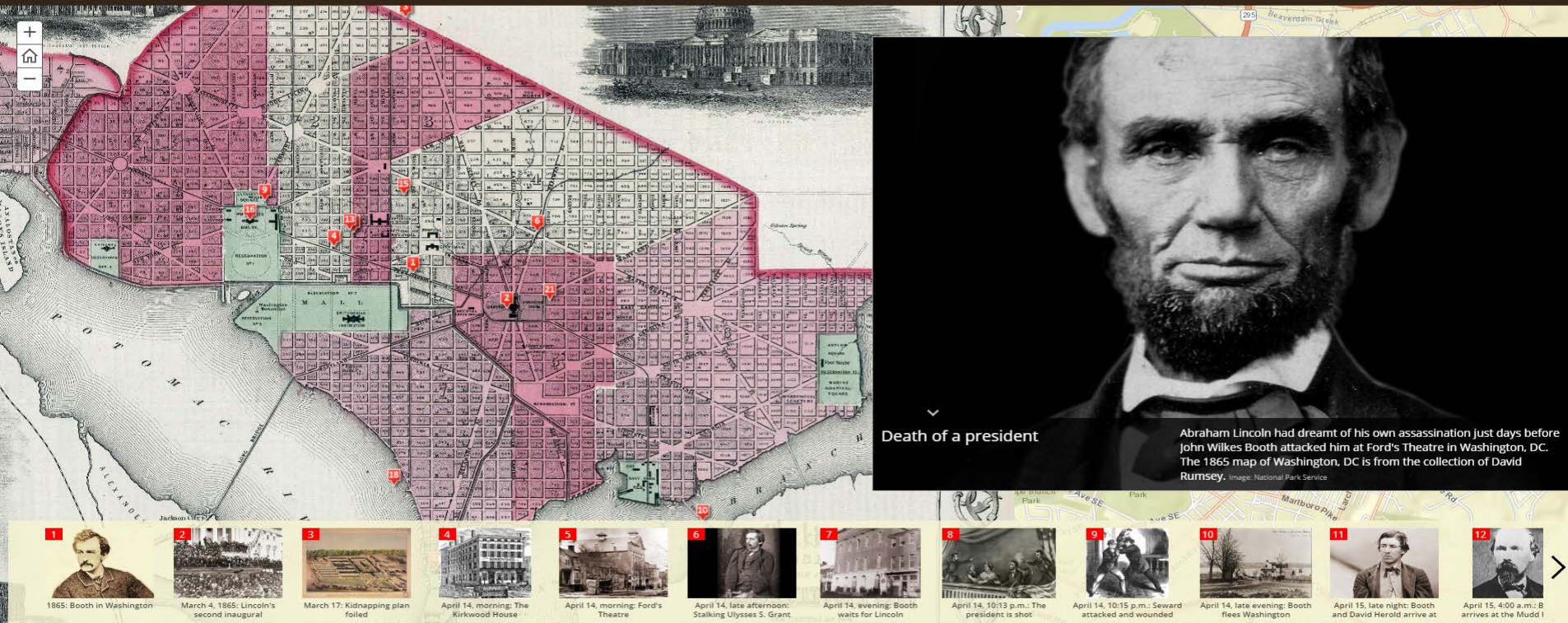
# Story Maps 101

- Tour – Showcases a location based narrative of an area

## The Assassination of Abraham Lincoln

This map tour recounts the bizarre saga of John Wilkes Booth and his co-conspirators.

A Story Map [f](#) [t](#) [e](#)



# Why Story Maps

- Easy to present information to the public in a visually pleasing manner
- Great for Public Meetings
  - Main display
  - Station
- Turn old documents/spreadsheets into usable information



# Story Map Tips

- Add your logo
- Set the URL to your homepage
- Put a “contact us” email link
  - In case of questions





# Americans with Disabilities Act - Best Practices

---

- Use high contrast colors
- Add photo captions
- Add email link for questions

# Helpful Tips

- You can continue to redefine and modify your web maps, after publishing story map
- Changes you make to your web map will automatically be reflected in your story map
- Pick a good thumbnail image.
- Plenty of examples online to use as inspiration (<https://storymaps.arcgis.com/en/>)

# DEQ Examples



DEQ Story Maps



Web Mapping Application

Tulsa Fuel and  
Manufacturing Superfund  
Site, Collinsville, OK



Web Mapping Application

Oklahoma Zinc and Lead  
Smelter Sites



Web Mapping Application

The Environmental Legacy  
of Oil Refining in  
Oklahoma



Web Mapping Application

Double Eagle and 4th  
Street Superfund Sites  
Then and Now



Web Mapping Application

ORC Superfund Site Then  
and Now



Web Mapping Application

Wilcox Oil Company



Web Mapping Application

Hudson Refinery Before  
and After Cleanup



Web Mapping Application

Repurposed Armories-  
Continued



Web Mapping Application

Repurposed National  
Guard Armories in  
Oklahoma



Web Mapping Application

SARA Title III





# Shamless Plug

- <https://deq.maps.arcgis.com/> - DEQ GIS Homepage
- <http://gisdata-deq.opendata.arcgis.com/> - DEQ Open Data
- <https://arcg.is/a8q9v> - DEQ Story Map Gallery

# Questions?



- Amy Brittain
  - 405-702-5157
  - [Amy.Brittain@deq.ok.gov](mailto:Amy.Brittain@deq.ok.gov)
  
- Matt Wormus
  - 405-702-5137
  - [Matthew.Wormus@deq.ok.gov](mailto:Matthew.Wormus@deq.ok.gov)