



ArcGIS Pro Tips and Tricks – Styles and Symbology

Training for the GIS Professional – Any Time, Any Place!

geospatialtraining.com

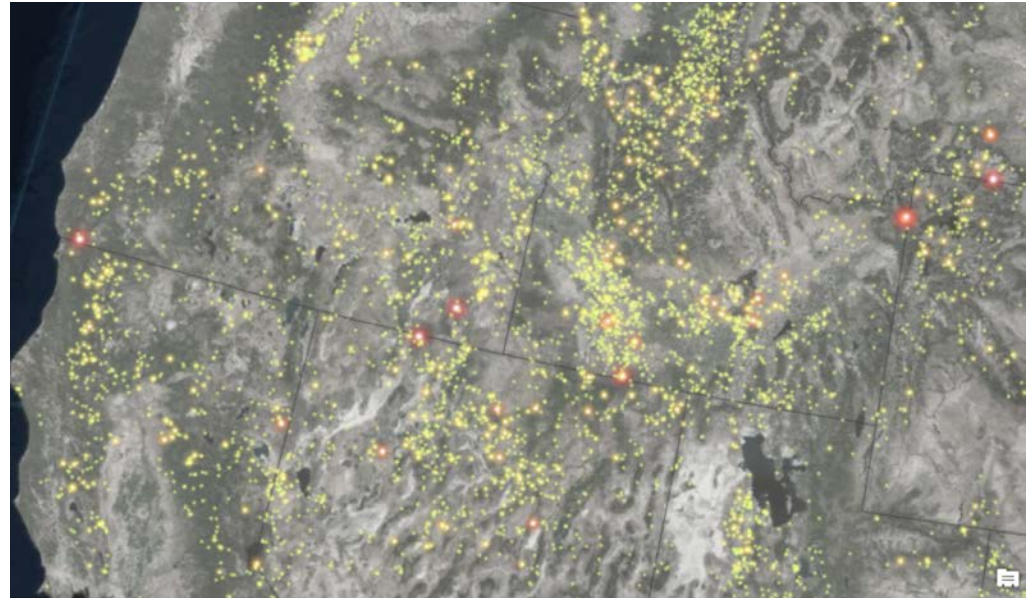
Overview

- In this session we'll focus on ArcGIS Pro tips for symbolizing your layers.
- Esri recently released a new Firefly visualization style and supporting basemap for ArcGIS Pro
- The new Firefly style and supporting basemap can be used to create really attractive thematic visualizations. In this session I'll show you how to put these to use in your ArcGIS Pro projects.

What are Styles?

- ArcGIS Pro project items that store:

- Symbols
- Colors
- Color schemes
- Label placements
- Layouts items
 - North arrows
 - Scale bars



- Symbol galleries are populated by items from a .stylx file
- Can add as many style file as you want to a project

System Styles

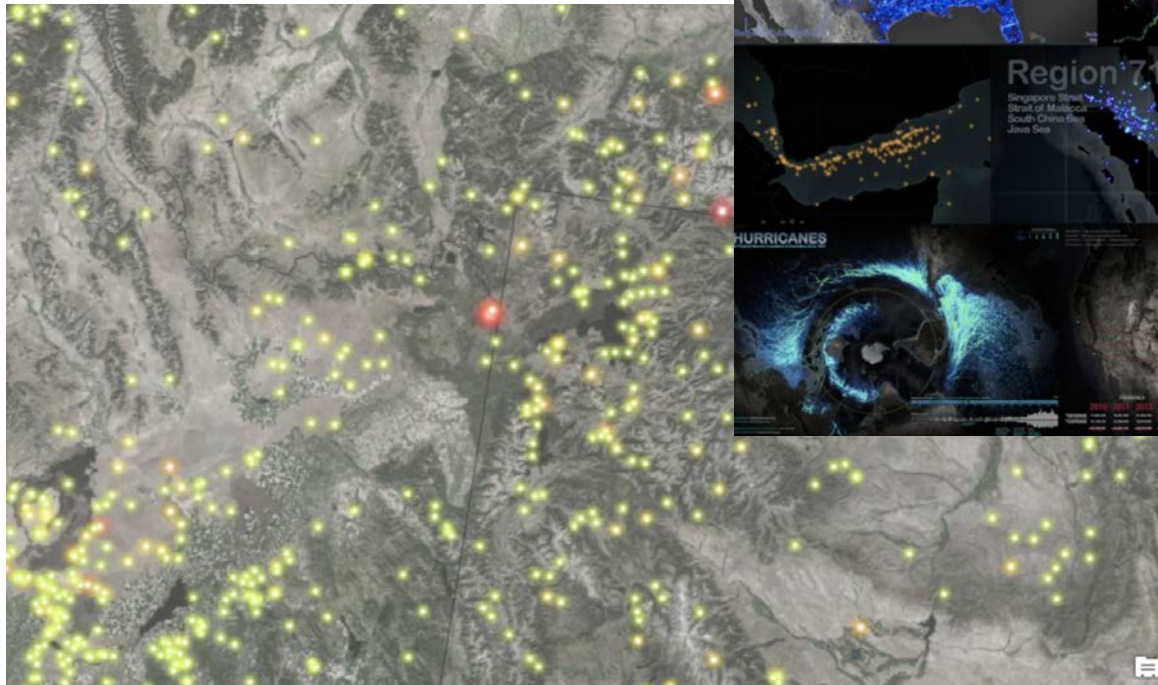
- Default styles installed with ArcGIS Pro
 - Read-only
 - Authored by Esri
- Added to new projects by default
 - ArcGIS 2D
 - ArcGIS 3D
 - ArcGIS Colors
 - ColorBrewer Schemes RGB
- <https://esri-styles.maps.arcgis.com/home/item.html?id=8eba1f11ecf14e33a2aa1e69ac991ded>

Custom Styles

- Can be authored by anyone
- Editable by default
- Can add custom styles to your project from file system or portal

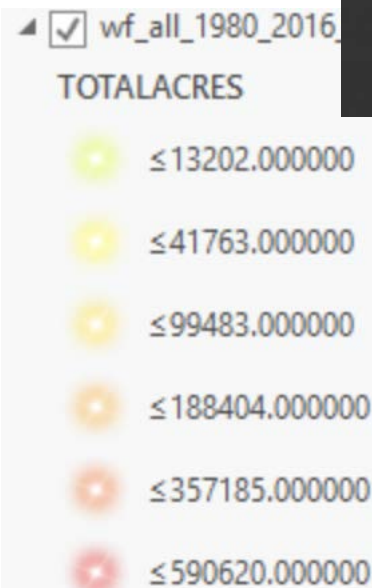
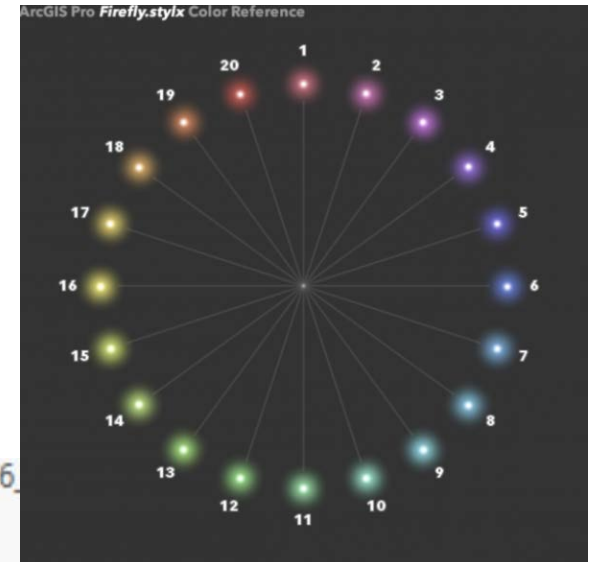
Firefly Custom Style and Supporting Basemap

- Esri recently released a new custom style and supporting basemap for ArcGIS Pro
 - Firefly
 - Basemap - World Imagery (Firefly)



Firefly Style

- Custom style for points, lines, polygons
- Download the style
 - <https://esri-styles.maps.arcgis.com/home/item.html?id=93a6d9ea3b54478193ba566ab9d8b748>



Firefly Style

- 2 styles

- Standard

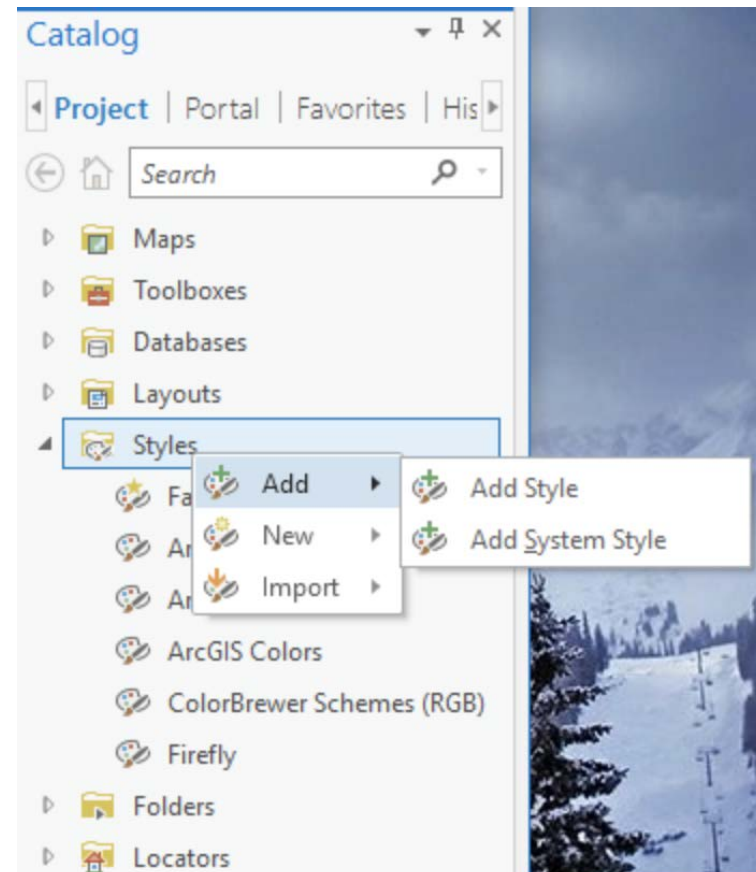


- Shimmer



Loading Styles in ArcGIS Pro

1. Open ArcGIS Pro and load a project.
2. Go to the Catalog pane
3. Find the Styles item
4. Right click Styles and select Add | Add Style as shown in the screenshot below. This style will now be added to the current ArcGIS Pro project.



Using the Firefly Style

- Available in the Symbology Pane in the Gallery tab
 - Double click a symbol for a layer to display Symbology Pane

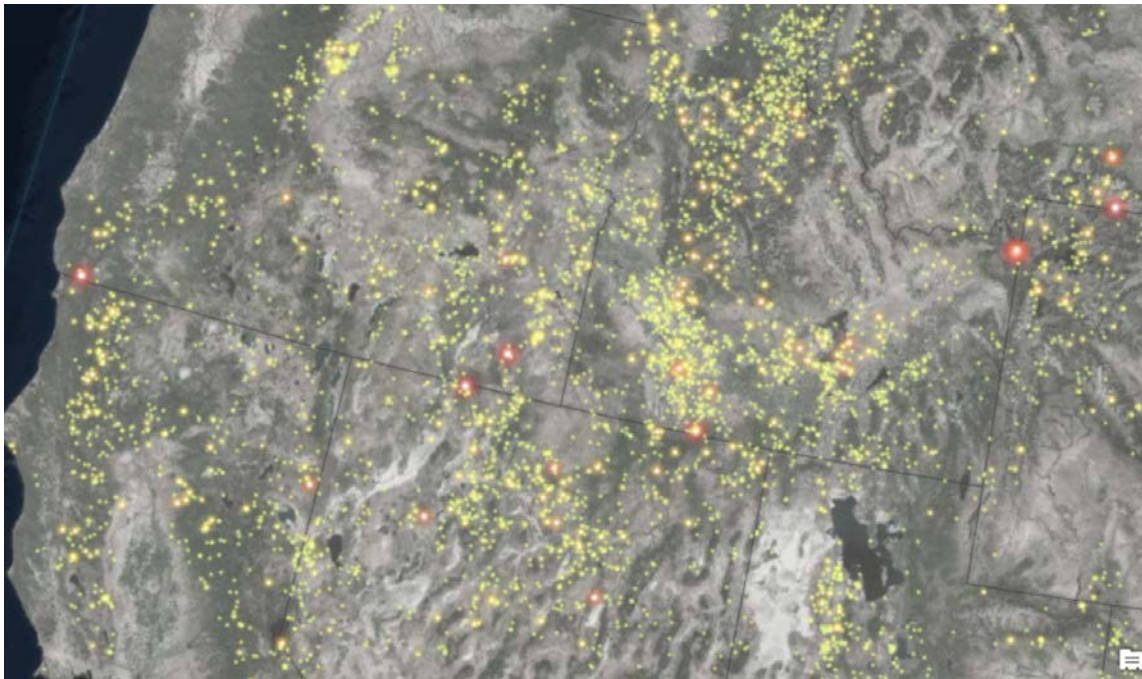


The Basemap is Important!

- Firefly style works best with specific types of basemaps
- Basemap should be as dark as possible and mostly devoid of color.
 - Significant contrast between the style and the basemap.
- Esri has created a basemap specifically for the Firefly style.
 - World Imagery (Firefly)
 - https://fly.maptiles.arcgis.com/arcgis/rest/services/World_Imagery_Firefly/MapServer.
 - Dark Gray Canvas basemap works well too

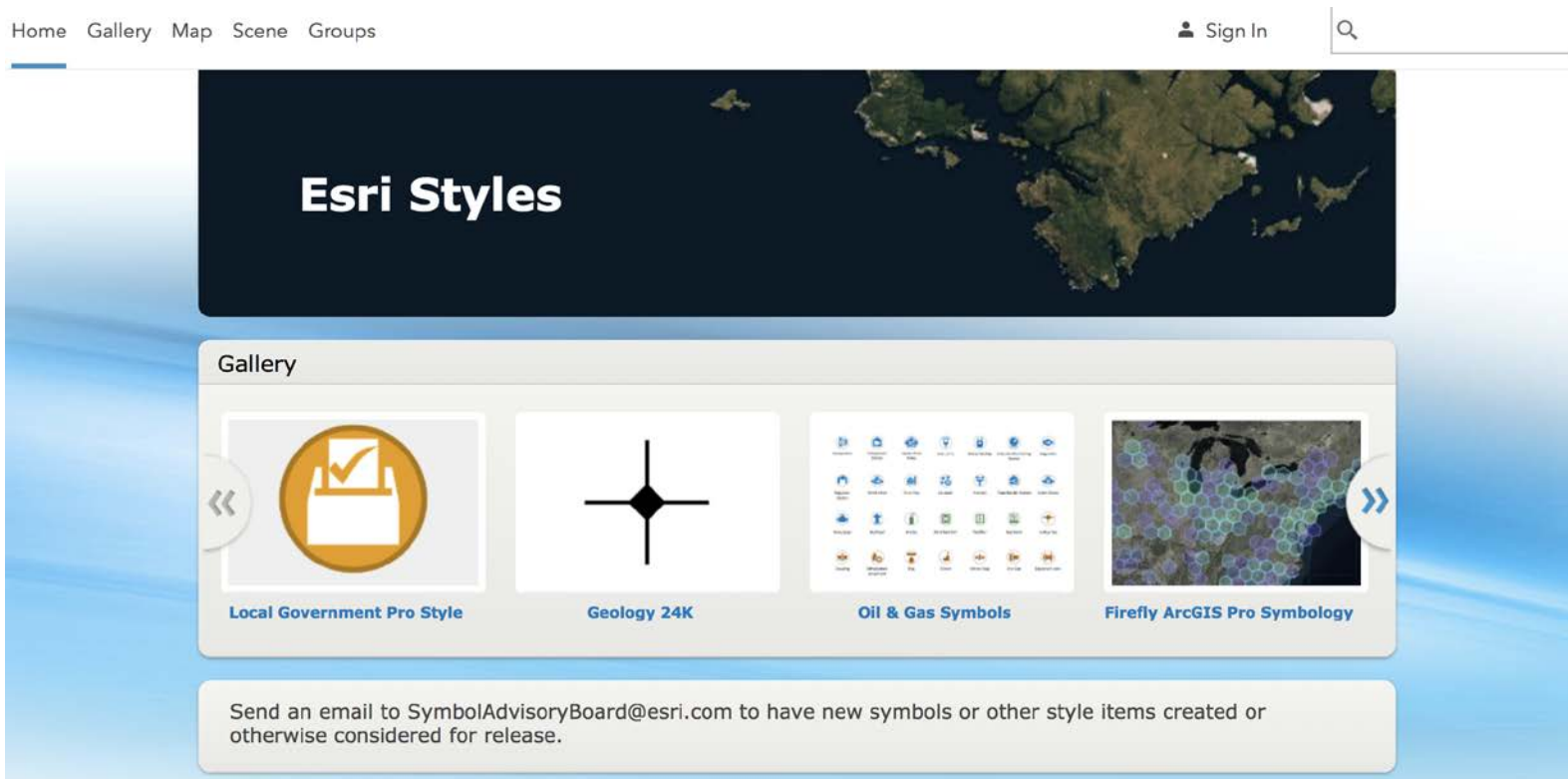
Demonstration Time

- Demonstration depicts large wildfires (greater than 1,000 acres) in the western United States from 1980 – 2016
- Firefly style and World Imagery Firefly basemap
- Graduated the symbol size based on the total acreage burned by each wildfire.



Download Other Styles

- <https://esri-styles.maps.arcgis.com/home/index.html#>



Home Gallery Map Scene Groups Sign In

Esri Styles

Gallery

- Local Government Pro Style
- Geology 24K
- Oil & Gas Symbols
- Firefly ArcGIS Pro Symbology

Send an email to SymbolAdvisoryBoard@esri.com to have new symbols or other style items created or otherwise considered for release.

More Information on Firefly

- [Using the ArcGIS Pro Firefly Style for Data Visualization](#)
- [Firefly Cartography Story Map](#)
- [Firefly Basemap Starter Pack for ArcGIS Pro](#)
- [Steal this Firefly Please – Blog Post](#)
- [World Imagery \(Firefly\) Basemap](#)
- [Firefly Basemap Starter Kit](#)
- [How To: Hurricane Map](#)

Upcoming ArcGIS Pro Classes in Oklahoma City

- Learning ArcGIS Pro 1: Maps and Projects
October 15th and 16th
- Learning ArcGIS Pro 2: Editing, Analysis, and Automation
December 10th and 11th
- Learning ArcGIS Pro 3: Converting, Linking, and Analyzing Data
January 14th and 15th
- Learning ArcGIS Pro 4: Sharing Your Maps and Data
February 11th
- Introduction to Programming ArcGIS Pro with Python
February 12th and 13th

More information : <https://www.scaug.org/EVENTS>