



# OKS AUG

## Quarterly Newsletter

Volume 1, Issue 3

Fall 2016

### Special points of interest:

- Upcoming Events
- Map Showcase
- 2016 User Group Meetings
- Lunch and Learns

### Inside this issue:

OKS AUG User Group	1
OKS AUG Conference	1
STEM Lunch and Learn	2
Map Showcase	3
Poster Making Tips & Tricks	4
Upcoming Events	6

## OKS AUG Norman User Group Meeting

In June, OKS AUG hosted the second User Group Meeting of the year at the National Weather Center on the OU Campus in Norman. Over one hundred people gathered to network and hear presentations from Patrick Livingood, Anthropology Professor at OU, Joyce Samuel and Marcia Castellanos-Aymat of the Oklahoma State Department, and Michael Beavers of Esri. After the presentations, participants enjoyed



socializing over pizza and those registrants who had signed up were treated to a tour of the National Weather Center facilities. The next user group meeting is scheduled for August 2nd at the Tulsa City Council Chambers. The fourth will be held in Walters, Oklahoma on December 6th. More details to come.

## 19th Annual OKS AUG GIS Conference

The 19th Annual OKS AUG GIS Conference is less than two months away! The Steering Committee has been working hard to put together something special this year, taking into consideration that many of our peers were unable to attend the Esri International User Conference this summer. Without giving too much away, we can't wait to share more about the revamped exhibitor sponsored pre-conference Meet & Greet and how Esri is coming to us! I know those mass emails are easy to ignore, but keep your eyes peeled for exciting information in the next few weeks. Remember early registration ends August 12th along with your guarantee to receive conference SWAG. We are also still accepting user presentation and poster abstracts, so don't be shy and earn those GISP credits!

## Women in S.T.E.M. Lunch and Learn in OKC

Several Guernsey employees attended an ArcGIS training class in Tulsa (February 2016). Through conversations over the two-day training, it was mentioned that OKSCAUG was looking to offer Lunch & Learns but were in need of hosts and facilities. Anthony Drummond mentioned that Guernsey had a sizeable conference room and would be willing to host. He took the time to follow up and arrange a meeting. Playing a dual role as OKSCAUG Outreach Coordinator and consultant with Cross Timbers Consulting, an event featuring women professionals had been in the thoughts of Pamela Journey. This fell into line with Guernsey's Women in STEM initiative. Beth Wilhelm, engineer with OWRB, had also attended the ArcGIS training in Tulsa and was the natural choice for a speaker. Through a series of emails, phone calls, and in-person meetings, the Oklahoma Women in STEM lunch and learn was born. Special thanks to Anthony Drummond as the driving force and to Lisa Hinson and Carol Williams of Guernsey who helped bring it together.



## Map Showcase: OWRB's High Water Inundation Mapping

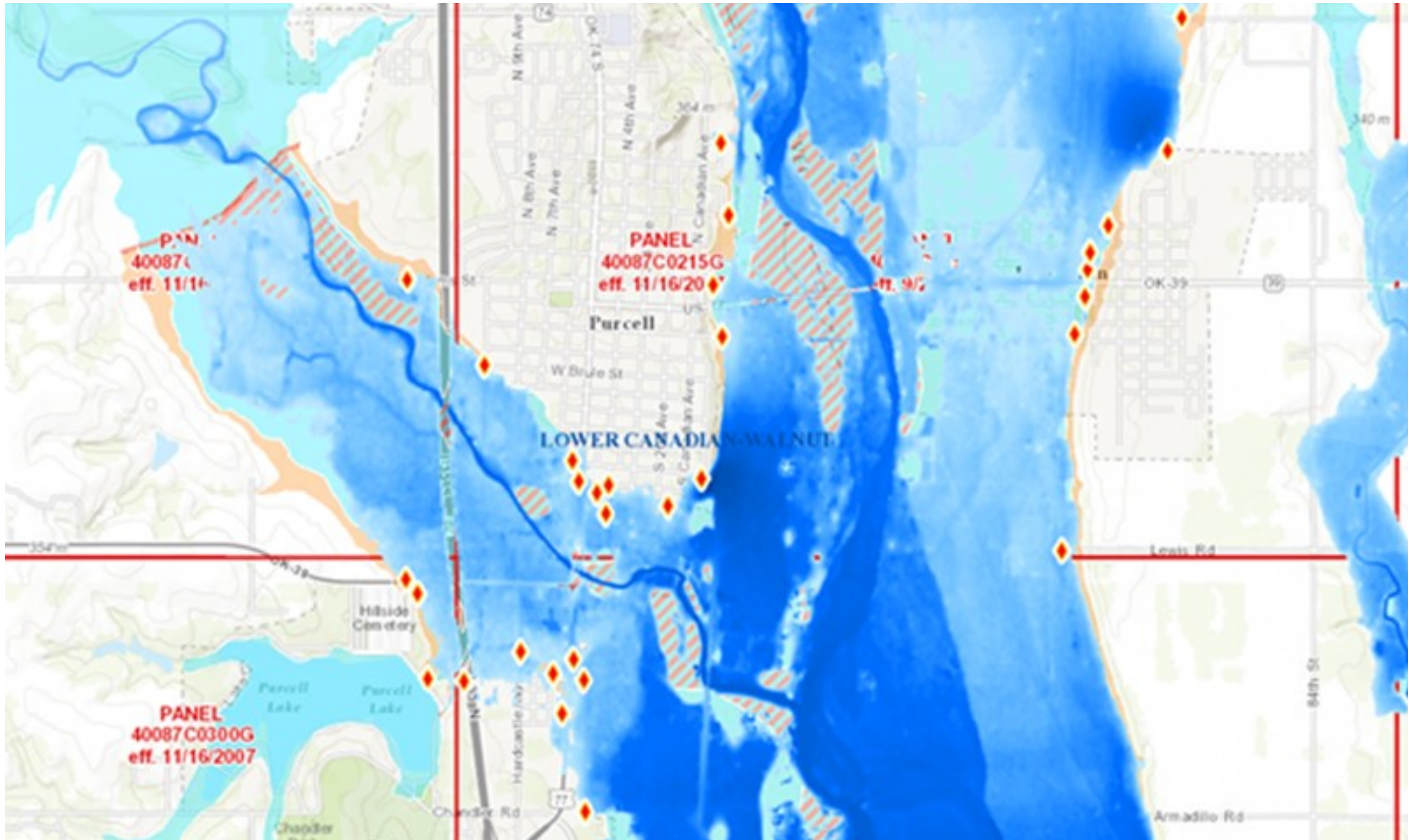
This month's map showcase is provided to us from the Oklahoma Water Resource Board. Beth Wilhelm, engineer with OWRB, showcased these two particular maps during our Women in STEM Lunch and Learn. The top map on the right shows the locations of the High Water Marks from their Inundation Mapping program while the bottom displays the NFHL Participating Communities within Oklahoma. These high water marks were collected following the severe flooding in our region in 2015 that produced cumulative flood levels exceeding 1000-year flooding event. This information is used to help communities better understand their risk from flooding events and allows them to develop mitigation plans to reduce future losses from similar events.

If you would like more information on the High Water Marks Program, the data and information along with the links to the FEMA Geoplatform can be accessed from:

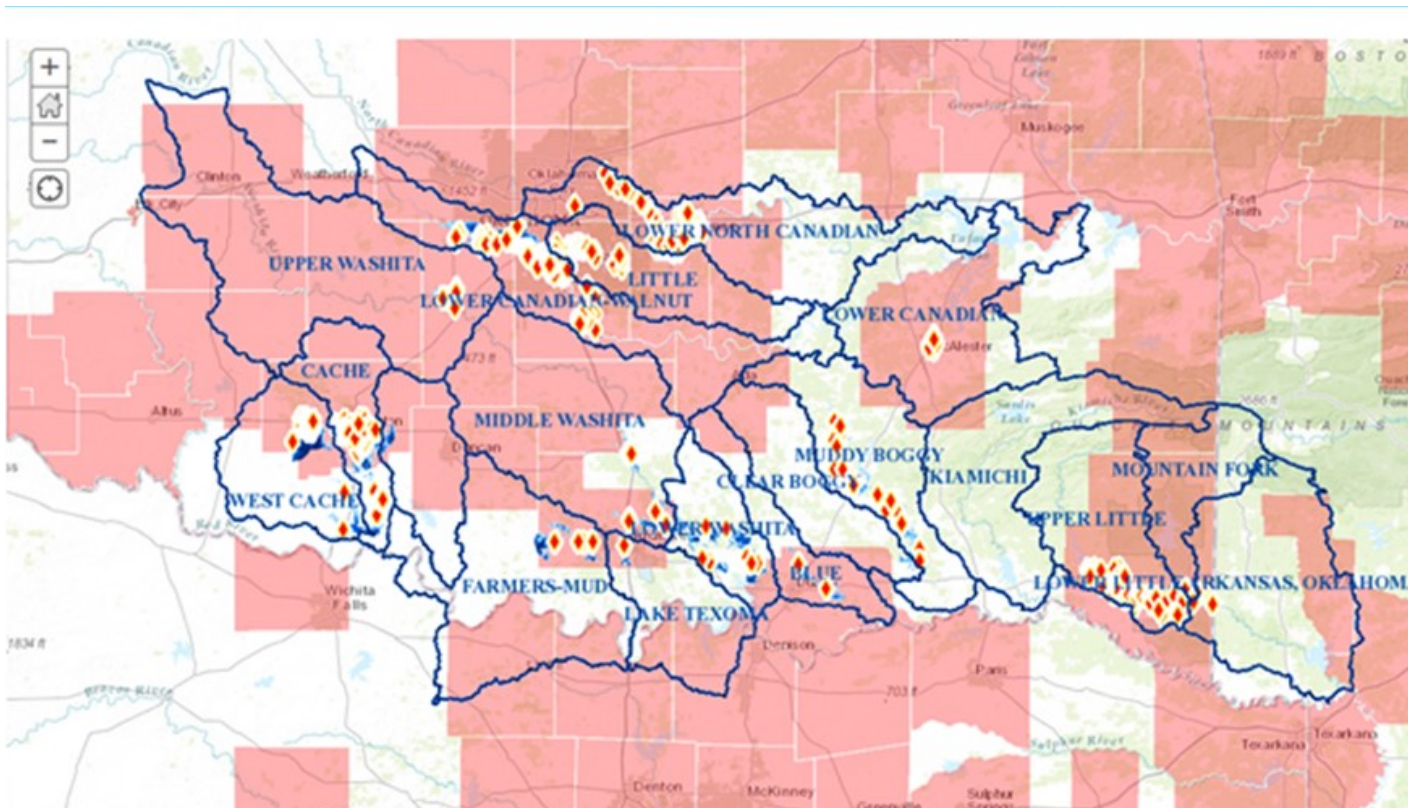
<http://www.owrb.ok.gov/hazard/fp/hwm.php>



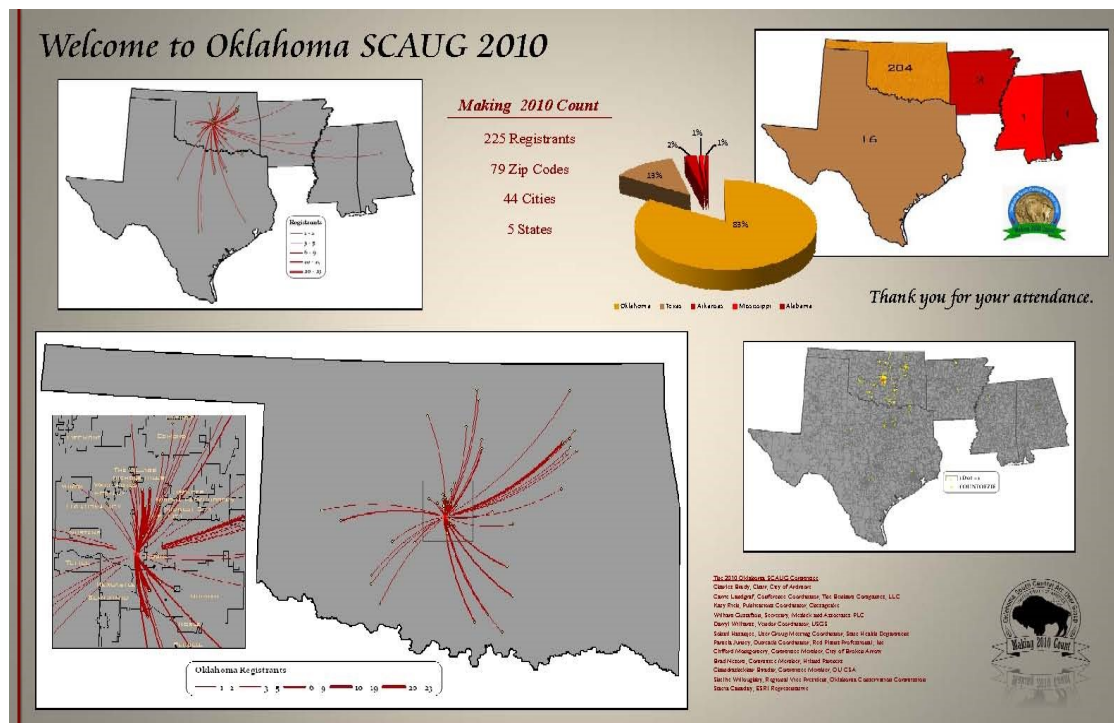




**ABOVE:** High Water Marks—Inundation Mapping.  
**Below:** Oklahoma NFHL Participating Communities



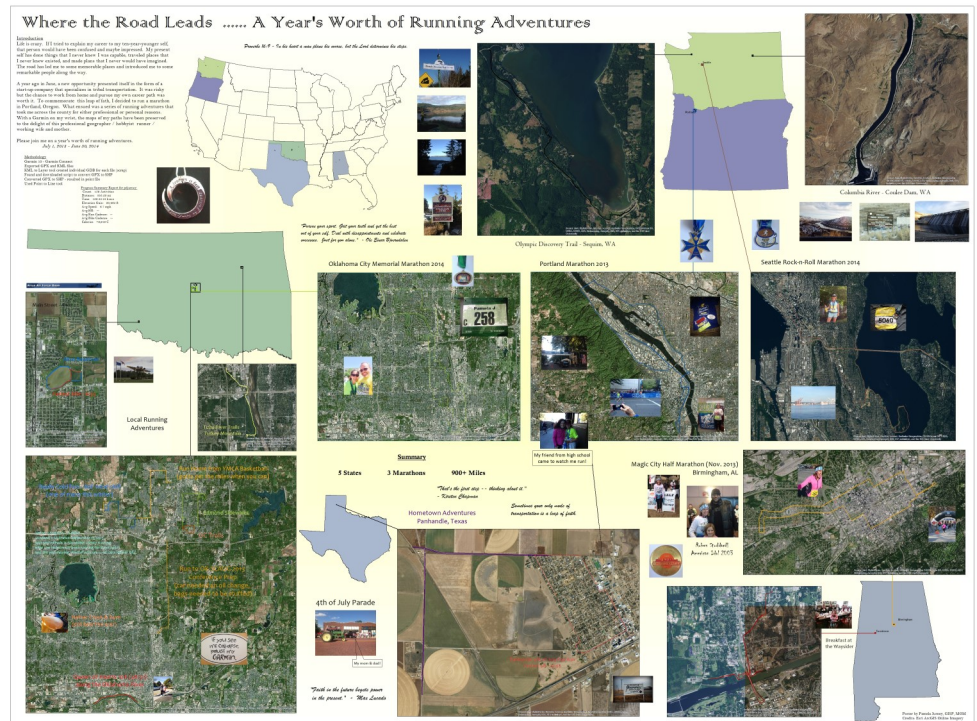
Most people are probably familiar with the Eye Dropper tool. This tool is invaluable when creating a poster layout because it allows you to match your map colors to chart elements. The following example is taken from the OKSCAUG 2010 attendance map. The colors in the pie chart were assigned corresponding RGB (Red, Green, Blue) values.





Poster layouts can also be created solely in ArcMap. At first, I was a little afraid of this because of the massive size that would become from so many data frames and layers, especially if aerial images were involved. ArcGIS Online helped with overcome this ready access to imagery. The map layout size can be customized in Page and Print Setup. For this next poster example, the custom size was 48 X 36 inches.

This poster layout was created in ArcMap. It contains sixteen data frames with extent rectangles tying map groups together and photos. Once again, the eye dropper tool was invaluable to create uniformity. The neat line around the layout is a rectangle with a yellow gradient fill that was ordered to the background. When finished, export your map as a pdf. The pdf will retain the dimensions of the custom layout.



A couple more items to mention to make poster creation easier are guidelines and the graphics toolbar. Guidelines will help keep your items in line with the overall layout. The graphics toolbar will help keep your items in line with each other.

A poster layout takes time. It takes some creativity. Start with a project or interest and make a map. Weave a story around that map with data or personal anecdotes or pictures. Before long, you'll be ready to take your maps and ideas and turn them into a poster layout.

Poster Tips & Tricks provided by: Pamela Journey, GISP - Cross Timbers Consulting, LLC  
pamela.journey@crosstimbersconsulting.com      www.crosstimbersconsulting.com

For printing, I recommend Gill Reprographics (GRI). You can upload and email your order, request for it to be mounted or laminated, and they will have it ready within a day or two. As a special incentive, GRI will offer a 10% discount for OKSCAUG members printing a poster. Be sure to mention it in the Notes when you place an order. You can read more about the company and the OKC location at their website: <http://www.gillrepro.com/>



OKSCAUG

PO Box 96

Ardmore, OK 73402

Fax: 214-291-5659

E-mail: [oklahoma@scaug.org](mailto:oklahoma@scaug.org)



## Call for Posters and Presentations for the 2016 OKSCAUG Conference

Our conference theme this year is GIS: Make the Leap. We are looking for people to submit a poster or lead a presentation. If you or someone you know would like to submit an abstract or if you have any questions about the posters or presentations please contact:

Lita Briscoe or Carrie Landgraf at:

[okscaugcoordinator@scaug.org](mailto:okscaugcoordinator@scaug.org)

Scan this QR code to the left to link directly to the abstract submission form!



## Upcoming Activities

### August

- ♦ 2: Tulsa User Group Meeting at Tulsa City Council Chambers
- ♦ 9-10: ArcGIS Basic Training 2

### September

- ♦ 19-22: 19th Annual OKSCAUG Conference (registration now open!)

### October

- ♦ TBD: ArcGIS Basic Training 1

### December

- ♦ 6: User Group Meeting in Walters, OK

If you know of an event that would be beneficial to the OKSCAUG community, please notify

Amber ([okwxgirl@yahoo.com](mailto:okwxgirl@yahoo.com)) or Lita ([lbriscoe1231@gmail.com](mailto:lbriscoe1231@gmail.com)) so that it can be included in the next newsletter.

ArcGIS Basic Training courses are often scheduled based on demand. If you are interested, please contact the Outreach Coordinator, Pamela Jurney at [pamela.jurney@crosstimbersconsulting.com](mailto:pamela.jurney@crosstimbersconsulting.com)