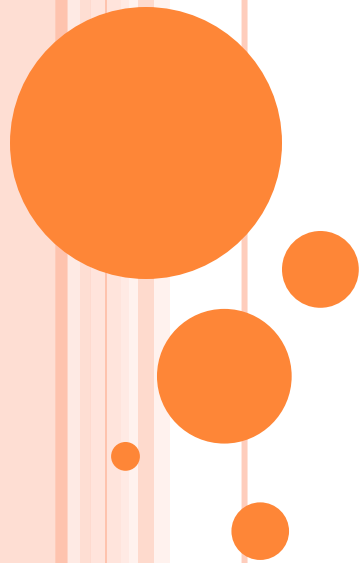


PUBLIC WORKS

Tahlequah

AUTHORITY



TAHLEQUAH, OK

-ESTABLISHED IN 1839 AS THE NEW CAPITAL OF THE CHEROKEE NATION

-FIRST INCORPORATED TOWN OF INDIAN TERRITORY
1852

01. Main Street (Tahlequah, Oklahoma) Letter to John Townsend, Prosperity, Missouri (June 12, 1906 from Sallie Steeley: Dear John: I got here O.K. I am ready to go out home now. Will write soon. Sallie



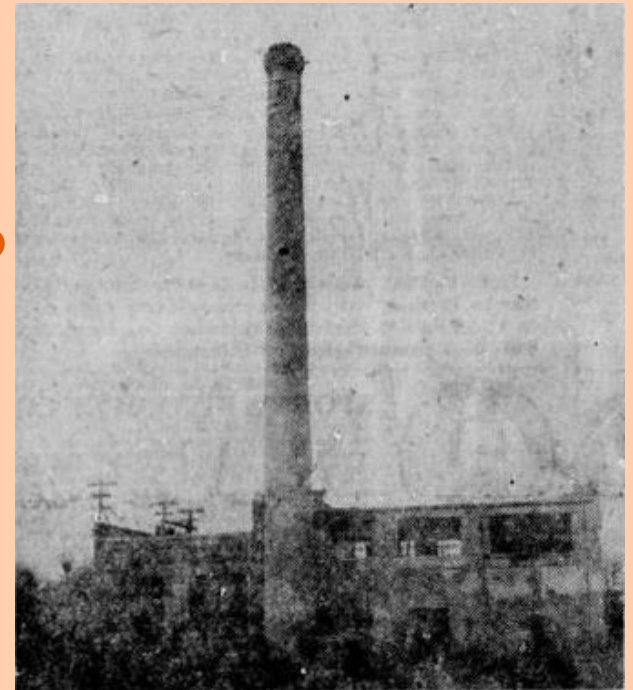
UTILITIES HISTORY

-WATER UTILITY SERVICE ESTABLISHED AROUND 1902; CITY OF TAHLEQUAH BOUGHT THE PRIVATE COMPANY IN 1909

-SANITARY SEWER SERVICE WAS PROVIDED AROUND 1909

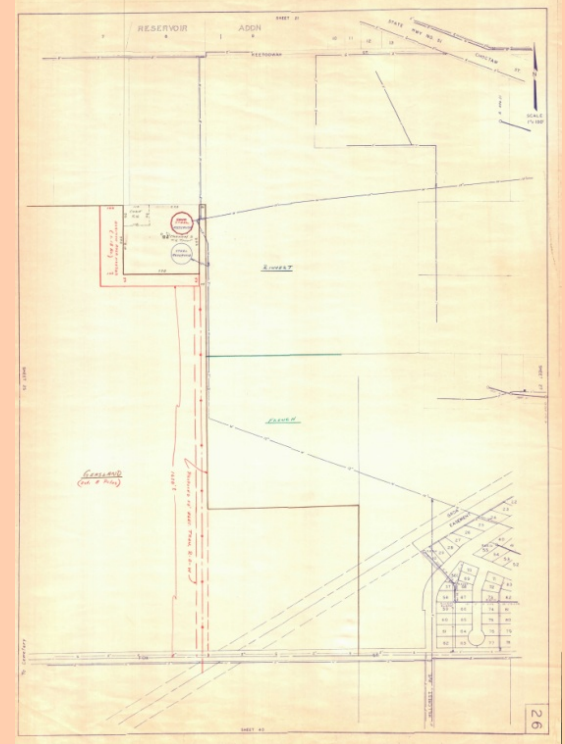
-ELECTRICITY FROM COAL POWERED GENERATORS WAS PRODUCED STARTING IN FEBRUARY 1921, CONVERTED TO DIESEL IN 1930.

-TAHLEQUAH PUBLIC WORKS AUTHORITY ESTABLISHED AS A TRUST OF THE CITY IN 1972



GIS AT TPWA

- LAST UTILITY ATLAS FOR TAHLEQUAH WAS PRINTED IN 1986, BADLY NEEDED UPDATING
- GIS WAS NOT BEING UTILIZED BY TPWA UNTIL 2012
- TPWA HIRED RHONDA BABER AND LARRY SETTERS, EXPERIENCED GIS USERS AND UTILITY MAPPERS



CHALLENGES

- SMALL CUSTOMER BASE = SMALL BUDGET (AVG. 8,600 ACCOUNTS). BULK OF FISCAL BUDGET REQUIRED TO BUILD NEW & MAINTAIN CURRENT UTILITIES (INFRASTRUCTURE, HEAVY EQUIPMENT & ADMINISTRATION)
- SOFTWARE LICENSES
- NO EXISTING DATA BASE
- GPS UNITS
- PRINTING & SCANNING EQUIPMENT

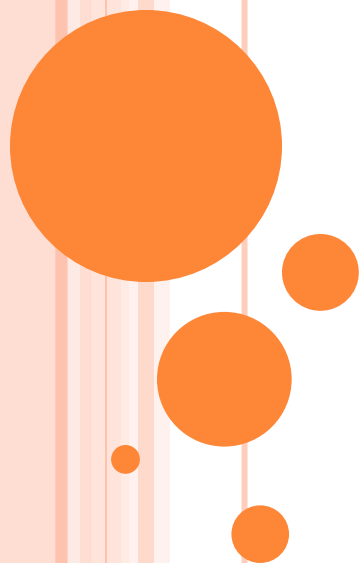


CHALLENGES (cont.)

-MAP DISSEMINATION (MAP BOOKS & ARC READER)

- ARC GIS ONLINE USED WITH MOBILE DEVICES
(NO CITYWIDE WIFI, WOULD HAVE TO USE
CELLULAR NETWORK; COST OF MOBILE
DEVICES)
- ARC READER ON LAPTOPS
(ARC READER BEING PHASED OUT; COST OF
LAPTOPS)

SOLUTIONS



SOFTWARE LICENSES SOLUTION

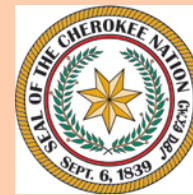
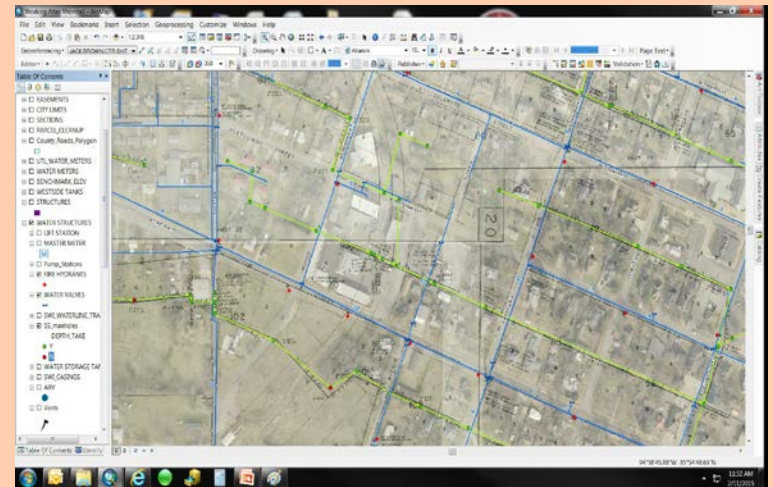
- STANDARD DESKTOP ESRI LICENSES
(NOT USING SERVER)

NO EXISTING DATA BASE SOLUTION

-GEOREFERENCED 1986 ATLAS,
CREATED UTILITY SHAPEFILES
FROM THOSE DRAWINGS

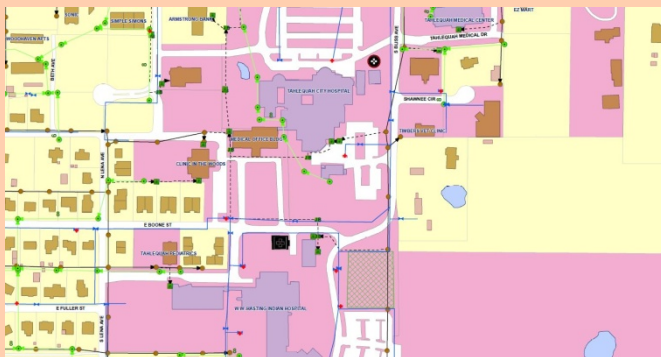
-FIELD DATA COLLECTION WITH
SUB-METER GPS

-DOWNLOADED TIGER
SHAPEFILES (ROADS & STREAMS),
BOUNDARIES, & PLS DATA, AS
WELL AS DATA SHARED BETWEEN
TPWA & OTHER LOCAL ENTITIES



NO EXISTING DATA BASE SOLUTION

-DIGITIZED BASE DATA FROM
PICTOMETRY



GPS UNITS SOLUTION

-GPS UNITS WITH SUB-METER ACCURACY
USING ESRI ARC PAD SOFTWARE

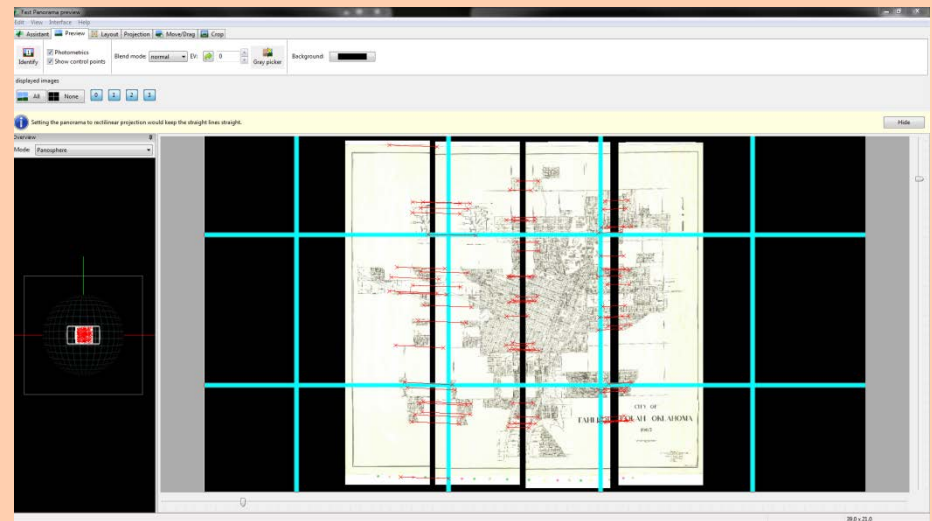
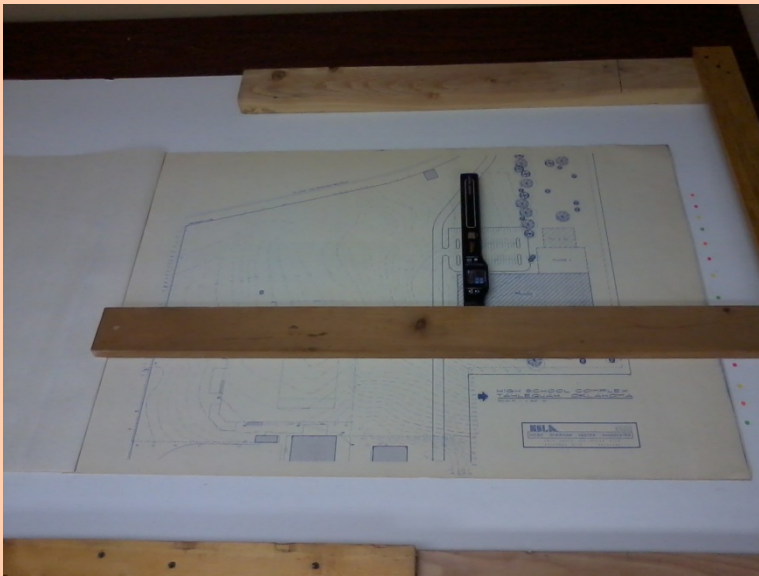


PRINTING & SCANNING EQUIPMENT SOLUTION

- GIVEN ACCESS TO CITY'S PLOTTER
- CHEROKEE COUNTY EMERGENCY
MANAGEMENT DONATED A SECOND-HAND
PLOTTER TO TPWA
- 11x17 MULTI-FUNCTION FLAT BED PRINTER

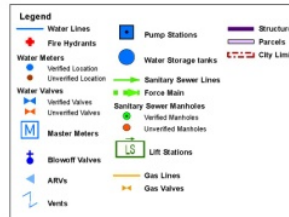
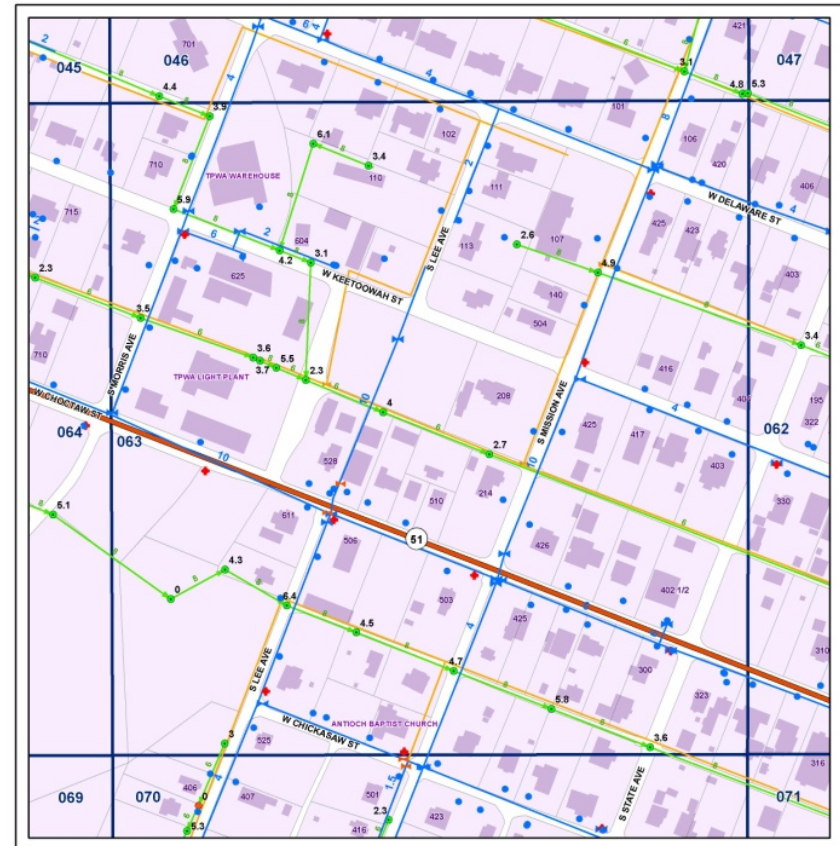


-HAND HELD SCANNER USED IN CONJUNCTION WITH FREE SOFTWARE TO “STITCH” SCANNED IMAGES (IN LIEU OF LARGE DOCUMENT SCANNER)



MAP DISSEMINATION SOLUTION

-PAPER MAP BOOKS (FOR
FIELD CREWS) &
ARC READER ON EXISTING
COMPUTERS



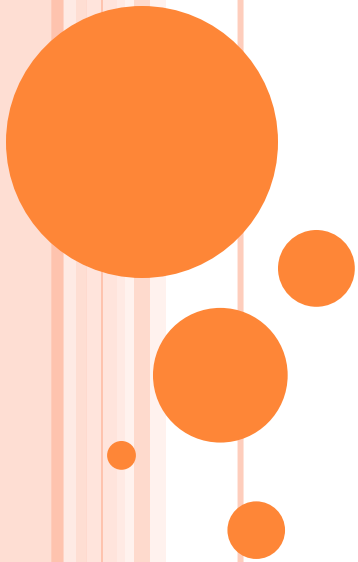
**WATER DISTRIBUTION
AND
WASTEWATER COLLECTION**



**SHEET
063**

PREPARED BY TPWA SPECIAL SERVICES - AUGUST 2015

QUESTION S



PUBLIC WORKS

Tahlequah

AUTHORITY

