

# Norman Police Department

Norman, Oklahoma

## DDACTS Implementation



September 24, 2013  
16<sup>th</sup> Annual OKSCAUG

# **Data Driven Approach to Crime and Traffic Safety**

**DDACTS is an operational model that uses the integration of location-based crime and traffic data to establish effective and efficient methods for deploying law enforcement and other resources.**

# DDACTS Model

- Utilize geo-mapping technology to identify high incident crime and crash areas
- Temporal & Spatial targeted enforcement
- Highly visible traffic enforcement strategies
- Start point for long-term change
- Decreasing social harm and improving quality of life

# DDACTS Implementation

## Seven Guiding Principles

- Partners and Stakeholder Participation
- Data Collection
- Data Analysis
- Strategic Operations
- Information Sharing and Outreach
- Monitoring, Evaluation and Adjustment
- Outcomes

# DDACTS / Norman Goals

- **Our Mission**
  - To maintain and enhance the quality of life in the City of Norman by protecting life, liberty, property and keeping the peace.
- **DDACTS Goals**
  - Reduce crime and traffic incidents in the established DDACTS zones

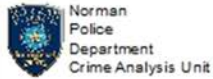
# Norman Resources

- **Record Management System**
  - Global Records
- **Mapping Software**
  - ESRI ArcGIS 10.0 w/Spatial Analysis Extension
- **Other Software/Tools**
  - Python 2.6 / ArcGIS Model Builder
  - Microsoft Office 2010 (Excel, Access, etc)
  - GeoSafe Patrol Unit PC Software
  - Raids Online website
  - Analyst
    - 1 – Commissioned
    - 2 – Civilian (1 Grant Funded)

# Dimension of Analysis

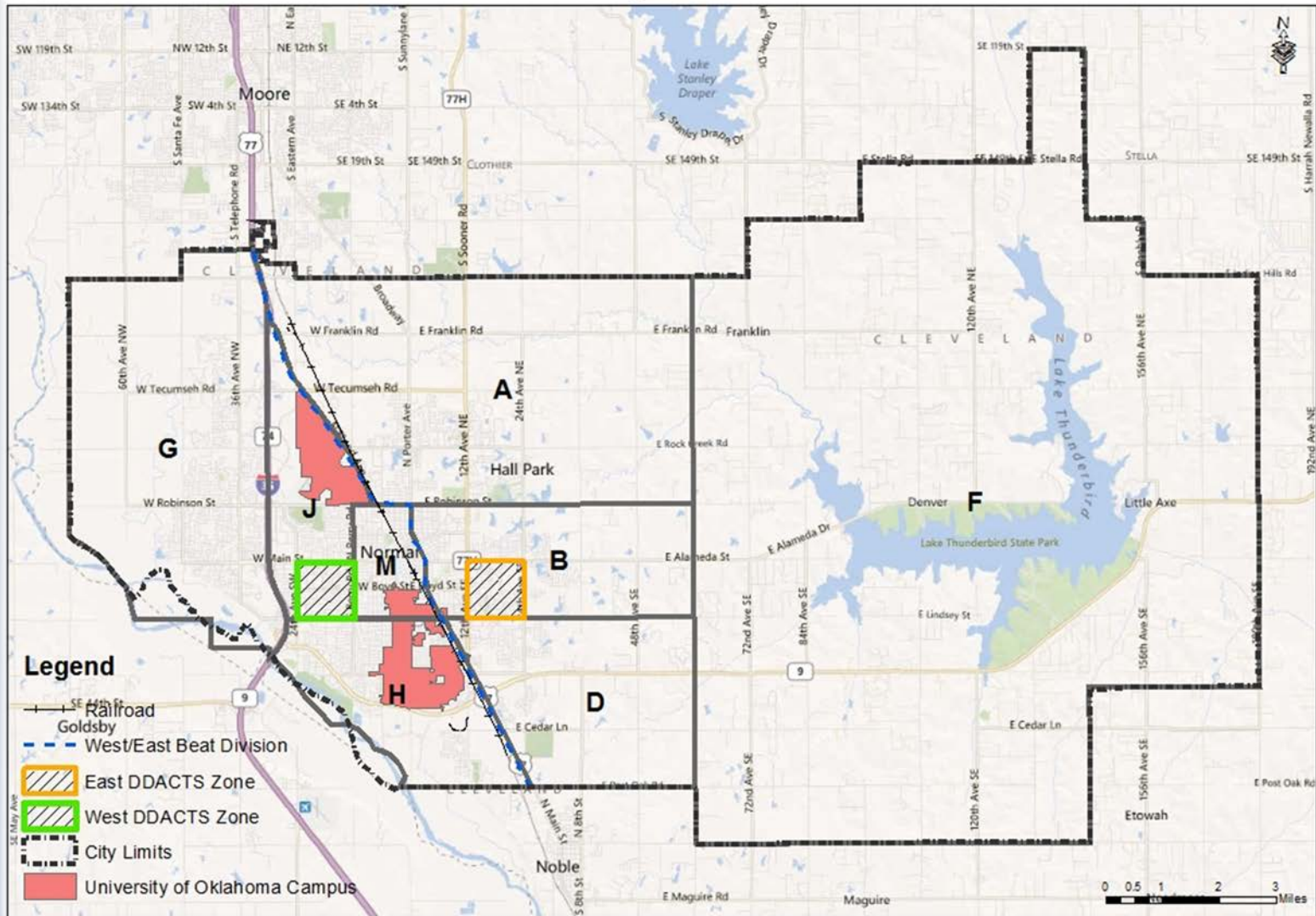
- **What**
  - Type of crash/crime
- **When**
  - Time of crash/crime
- **Where**
  - Location of crash/crime
- **How**
  - *Modus operandi* / Crash factors

# Zones Selected



## NORMAN, OKLAHOMA

Completed: February 23, 2013





# 2012 Zone Stats

## 2012 Stats

CRIME	West	East	Zones Total	Outside Zone	Zones Percentage
Aggravated Assault	6	4	10	65	15.38%
Rape	2	5	7	62	11.29%
Robbery	6	5	11	54	20.37%
Burglary	37	74	111	682	16.28%
Larceny from Vehicle	60	63	123	926	13.28%
Motor Vehicle Theft	12	19	31	234	13.25%
ACCIDENTS (Excluded PP)	West	East	Zones Total	Outside Zone	Zones Percentage
All	244	184	428	2112	20.27%
Injury	49	56	105	600	17.50%
Non-Injury	195	128	323	1512	21.36%

# Partners & Stakeholders

- Patrol Officers
- Criminal/Special Investigation Divisions
- Crime Free Multi Housing Officer
- Neighborhood Watch Officer
- Citizen Police Academy
- City Council Study Session
- District Attorney
- Norman Transcript local paper
- Raids Online
- Public Press Releases

# Data Collection

- 5 Year Base data extracted
  - Calculate mean, standard deviation and thresholds
- Traffic Data Obtained & Prepped for analysis
  - Python Traffic Adjustment tool
  - Contributing Factors Added
- Crime Data Obtained
  - Crimes filtered by UCR crime type
- Quality Controls
  - Weekly data review
  - 3 Month reviews

# Python Traffic Adjustment

## Accident Report Attributes

- From Intersection (A/F)
- Direction (W/E/S/N)
- Distance (FT)

```
*Collision_Adjustment_2012_ArcGIS10_Working.py - P:\Crime Analysis\Working\Projects\DDACTS...
File Edit Format Run Options Windows Help
# Name: Collision Point Adjustment
# Purpose: This script updates the points position by adjusting it by
# the direction and distance values found in the collision
# Author: Jason Redden
# Created: 13/07/2012
#-----
# Import Libraries
import arcpy, sys, os, string, math

# Declare variables
streetName = "NA"
fromAttribute = "T"
Direction = "2"
Distance = "0"
RecordID = "NA"
errorCount = 0

# Shapefile Locations of Collisions to be adjusted
shapeFileName = "P:\Crime Analysis\Working\Projects\DDACTS_June_2012\DDACTS_
# Overwrite pre-existing files
arcpy.env.overwriteOutput = True
FieldList = arcpy.ListFields(shapeFileName)

# Capture the geometry of the point
desc = arcpy.Describe(shapeFileName)
Shape = desc.ShapeFieldName

Ln: 2 Col: 0
```



# Traffic Contributing Factors

Crash factors extracted from accident reports

Unsafe / Unlawful Contributing Factors		Unit 1	Unit 2
		1	4
		9	8
<b>FAILED TO YIELD</b>	49 Tires		
01 From Stop Sign	50 Suspension		
02 From Yield Sign	51 Headlights		
03 Private Drive	52 Tail Lights		
04 County Road at Through Highway	53 Stop Lights		
05 From Signal Light	54 Wheel		
06 From Alley	55 Exhaust System		
07 To Pedestrian	56 Windshield Wipers		
08 To Vehicle on Right	57 Other Mechanical Defects		
09 To Vehicle in Intersection	<b>LEFT OF CENTER</b>		
10 To Emergency Vehicles	58 In Meeting		
12 Other	59 No Passing Zone (Unmarked)		
<b>FOLLOWED TOO CLOSELY</b>	60 Marked Zone		
13 Human Element	61 Other		
14 Traffic Condition	<b>IMPROPER OVERTAKING</b>		
15 Weather Condition	62 In Marked Zone		
<b>UNSAFE SPEED</b>	63 On Hill/Curve		
	64 At Intersection		
	65 Without Sufficient Clearance		
	66 Other		
	<b>IMPROPER PARKING</b>		



## Legend

- |  |  |   |
|--|--|---|
| <span style="color: pink;">●</span> CHANGED LANES UNSAFELY | <span style="color: green;">●</span> IMPROPER TURN           | <span style="color: darkgreen;">●</span> UNSAFE SPEED |
| <span style="color: yellow;">●</span> FAILED TO YIELD      | <span style="color: blue;">●</span> INATTENTION              |   |
| <span style="color: orange;">●</span> FOLLOWED TOO CLOSELY | <span style="color: brown;">●</span> OTHER IMPROPER ACT/MOVE |   |

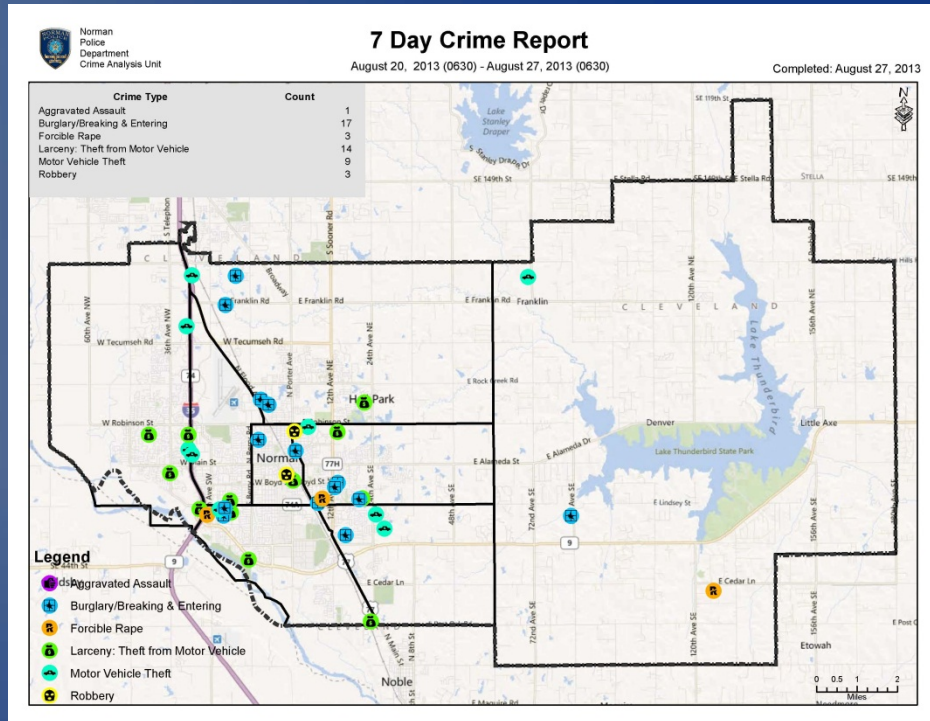
# Data Analysis

- **Reporting Procedures**
  - Weekly Crime Overviews
  - Monthly Crime Briefing
- **Automation**
  - Model Builder tools
- **Actionable Products**
  - Weekly Crime Reports
  - Monthly RECON Packets
  - Ad hoc crime trends/series/patterns

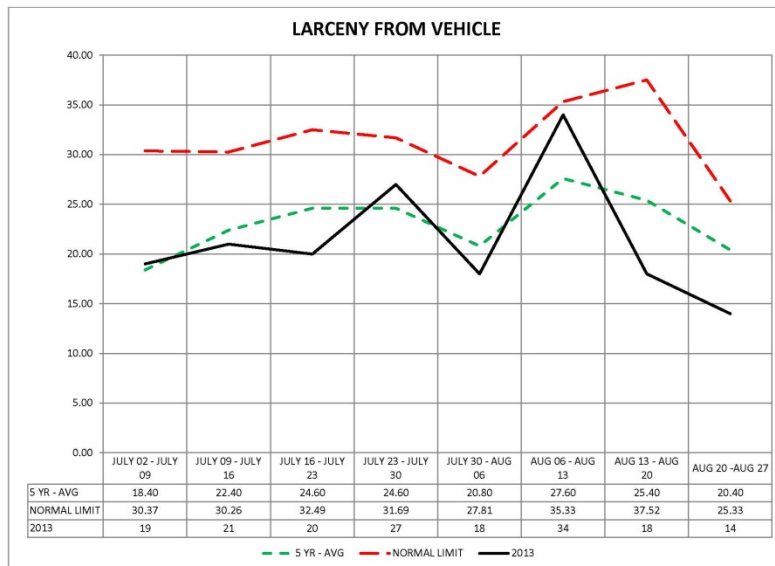


# Weekly Crime Reports

- Quality Control Step
  - Crime Coding checked
- Threshold Monitoring
  - High/Low

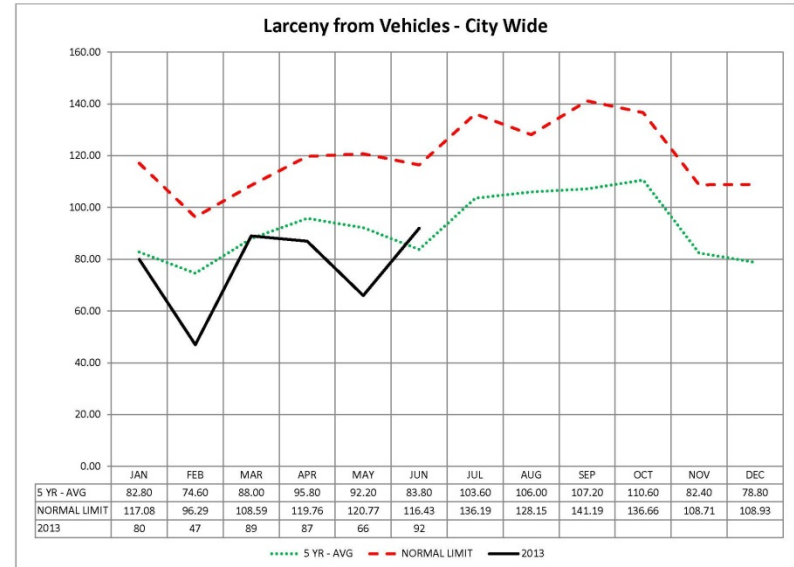
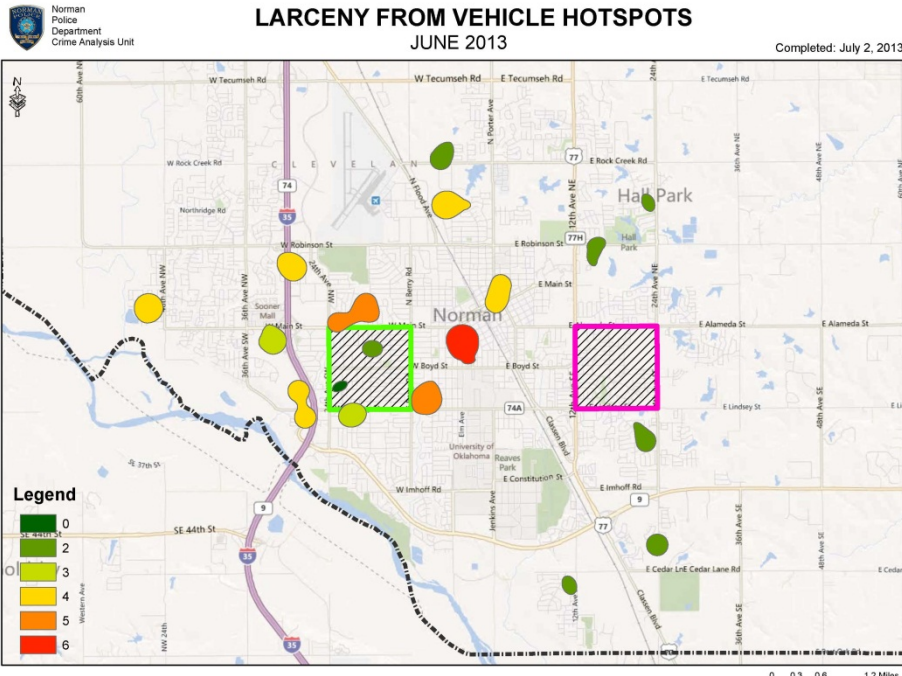


- ## Situational Awareness
- Current patterns\hotspots
  - Current expected trends



# Monthly Staff Reports

- Monthly Hotspots
- Monthly Counts/Threshold
- Monthly 5 Year Patterns



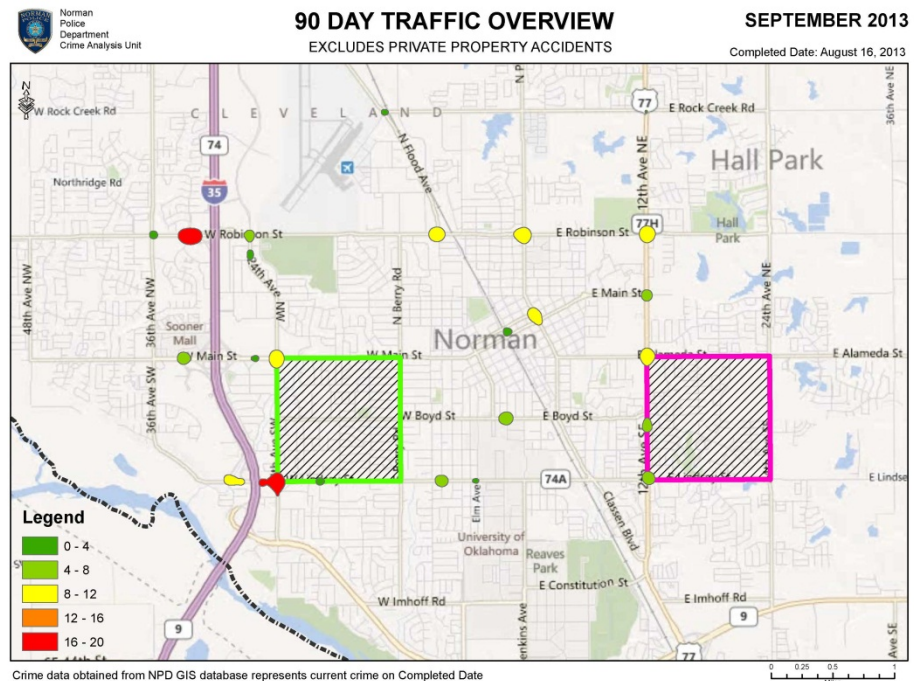
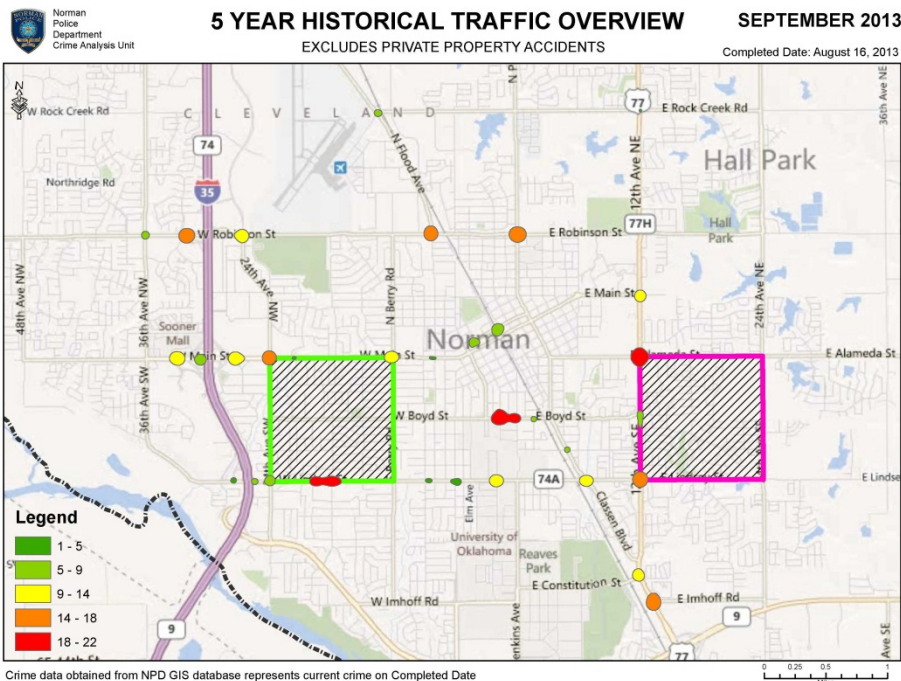
## Situational Awareness

- Current patterns\hotspots
- Current expected trends



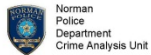
# RECON PACKET

## Overview of Next Month Crime and Accident locations based on 5 year historical data and 90 day data



# RECON PACKET

## 90 day review of top traffic locations & Zone crimes



### E Alameda St & 12th Ave SE September DDACTS - 90 Day Traffic Overview

Completed: August 14, 2013



#### Legend

- FAILED TO YIELD
- INATTENTION
- OTHER IMPROPER ACT/MOVE
- FOLLOWED TOO CLOSELY
- NO CAUSE
- alcohol-DUI/DWI

#### Accident Event Stats

CONTRIBUTING FACTOR	COUNT	Factor %	DOW	COUNT	DOW %	TOD	COUNT	TOD %
alcohol-DUI/DWI	1	7.69%	Sunday	0	0.00%	0000-0300	0	0.00%
FAILED TO YIELD	4	30.77%	Monday	2	15.38%	0300-0600	0	0.00%
FOLLOWED TOO CLOSELY	2	15.38%	Tuesday	2	15.38%	0600-0900	2	15.38%
INATTENTION	4	30.77%	Wednesday	2	15.38%	0900-1200	2	15.38%
NO CAUSE	1	7.69%	Thursday	2	15.38%	1200-1500	3	23.08%
OTHER IMPROPER ACT/MOVE	1	7.69%	Friday	4	30.77%	1500-1800	4	30.77%
			Saturday	1	7.69%	1800-2100	1	7.69%
						2100-2400	1	7.69%
<b>TOTAL # ACCIDENTS:</b>	<b>13</b>							

\*\* Accident data was retrieved from NPD GIS Database and locations adjusted based on Officer reports.

\*\* Accident locations are relative to their actual location.

\*\* The % column for each category is a ratio of the item value / the total value.

\*\* Does NOT include Private Property accidents

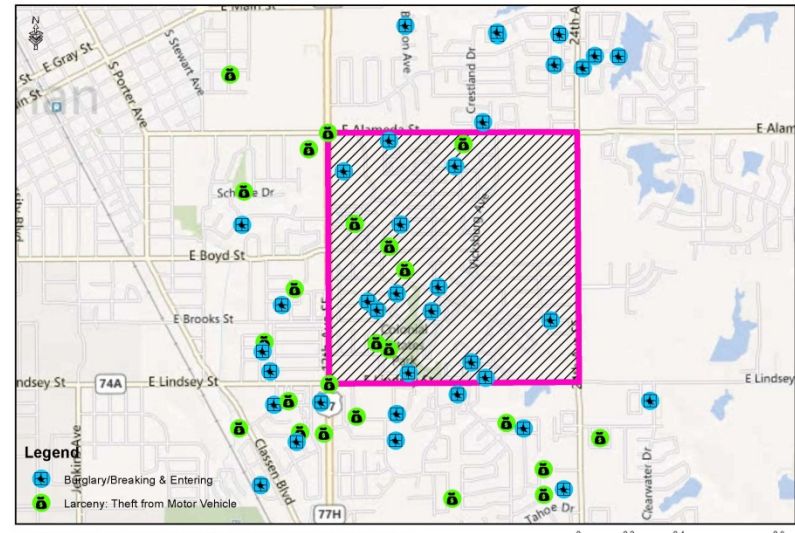
Not all symbols may be visible  
if accidents  
occur at the same location



### EAST DDACTS ZONE 90 DAY CRIME OVERVIEW

SEPTEMBER 2013

Completed: August 15, 2013



Crime data obtained from NPD GIS database represents current crime at time extracted

M.O.	COUNT	Factor %	DOW	COUNT	DOW %	TOD	COUNT	TOD %
VEHICLE UNLOCKED	16	27.12%	Sunday	12	14.81%	0000-0300	24	19.83%
VEHICLE WINDOW	3	5.08%	Monday	16	19.75%	0300-0600	21	17.36%
VEHICLE PARTS	3	5.08%	Tuesday	9	11.11%	0600-0900	15	12.40%
RESIDENCE FRONT DOOR	17	28.81%	Wednesday	18	22.22%	0900-1200	14	11.57%
RESIDENCE BACK DOOR	5	8.47%	Thursday	10	12.35%	1200-1500	10	8.26%
RESIDENCE GARAGE DOOR	4	6.78%	Friday	5	6.17%	1500-1800	7	5.79%
RESIDENCE WINDOW	6	10.17%	Saturday	11	13.58%	1800-2100	10	8.26%
UNLAWFUL ENTRY	5	8.47%				2100-2400	20	16.53%
<b>TOTAL # CRIMES:</b>	<b>59</b>							

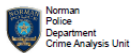
# Strategic Operations

- **Resource deployment meetings**
  - Meet with Patrol Major/Captains
  - Discuss areas of concern and resources needed
- **Define analysis products to accomplish goals**
  - Produce additional products as needed for operations



# WEST Zone Operation

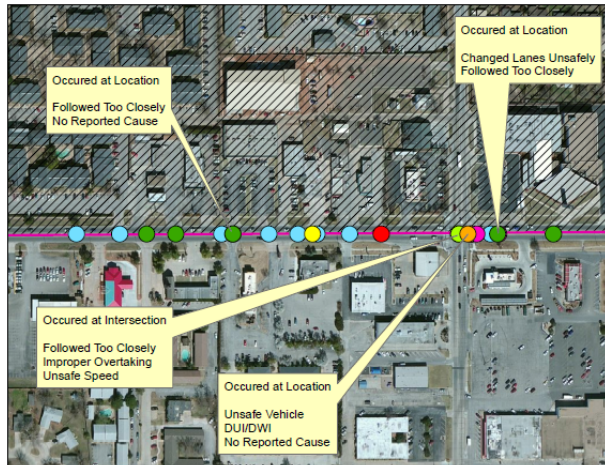
- Identified Traffic Hot Spot
- Traffic Overview Sheet
- Patrol Units Deployed



## W Lindsey Str & McGee Dr.

### April Traffic Overview

Completed: March 13, 2013



#### Legend

- CHANGED LANES UNSAFELY
- FOLLOWED TOO CLOSELY
- IMPROPER OVERTAKING
- FAILED TO STOP
- FAILED TO YIELD
- INATTENTION
- UNSAFE SPEED
- UNSAFE VEHICLE
- DUI/DWI-alcohol
- No Reported Cause

Not all symbols may be visible if accidents occur at the same location

#### Accident Event Stats

CONTRIBUTING FACTOR	COUNT	Factor %	DOW	COUNT	DOW %	TOD	COUNT	TOD %
INATTENTION	8	33.33%	Sunday	1	4.17%	0000-0300	0	0.00%
FOLLOWED TOO CLOSELY	6	25.00%	Monday	0	0.00%	0300-0600	0	0.00%
CHANGED LANES UNSAFELY	2	8.33%	Tuesday	1	4.17%	0600-0900	1	4.17%
No Reported Cause	2	8.33%	Wednesday	3	12.50%	0900-1200	3	12.50%
DUI/DWI-alcohol	1	4.17%	Thursday	7	29.17%	1200-1500	4	16.67%
FAILED TO STOP	1	4.17%	Friday	9	37.50%	1500-1800	10	41.67%
FAILED TO YIELD	1	4.17%	Saturday	3	12.50%	1800-2100	5	20.83%
IMPROPER OVERTAKING	1	4.17%				2100-2400	1	4.17%
UNSAFE SPEED	1	4.17%						
UNSAFE VEHICLE	1	4.17%						
<b>TOTAL # ACCIDENTS:</b>	<b>24</b>							

\*\* The above data includes ALL accident data for the month of April for the years 2008 - 2012.

\*\* Accident data was retrieved from NPD GIS Database and locations adjusted based on Officer reports.

\*\* Accident locations are relative to their actual location

\*\* The % column for each category is a ratio of the item value / the total value.

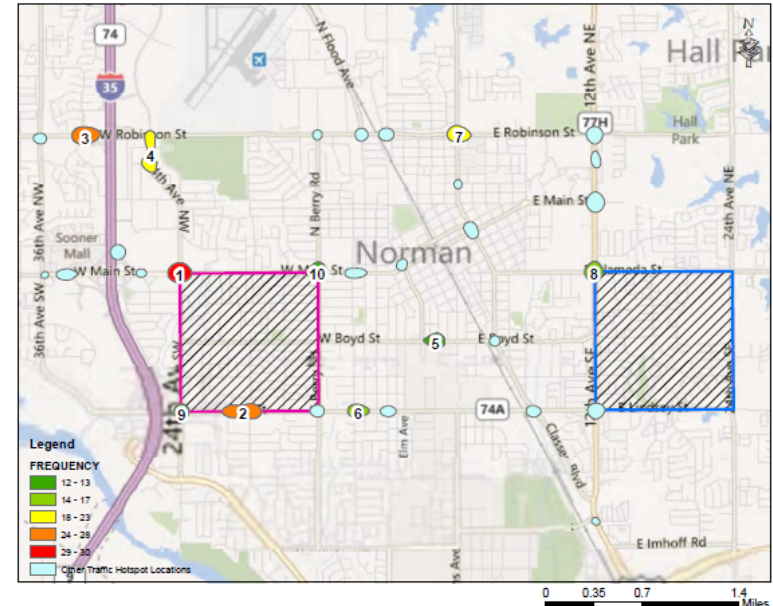
\*\* Does NOT include Private Property accidents



## April 2013 High Traffic Accident Areas

### April Traffic Overview

Completed: March 14, 2013



#### TOP 10 HIGH ACCIDENT LOCATIONS (BASED ON 2008-2012 DATA)

RANK	LOCATION
1	W Main St & 24th Ave NW
2	W Lindsey St & McGee Dr.
3	E Robinson St & Crossroads Blvd
4	W Robinson St & 24th Ave NW
5	W Boyd & Asp Ave
6	W Lindsey St & S Flood Ave
7	E Robinson St & N Porter Ave
8	E Alameda St & 12th Ave SE
9	W Lindsey St & 24th Ave SW
10	W Main St & N Berry Rd

\*\* The above data includes ALL accident data for the month of April for the years 2008 - 2012.

\*\* Accident data was retrieved from NPD GIS Database and locations adjusted based on Officer reports.

\*\* Accident locations are relative to their actual location

# Resource Deployment

## April 2013 West Zone Traffic Operation Data

### Section 1: Enforcement Data

#### Monthly Enforcement Operation Data

Total Hours of Enforcement: 26.5  
 Total Number of Citations: 57  
 Total Number of Warnings: 101  
 Total Number of FI: 6  
 Total Number of Criminal: 6  
 Total Number of Contacts: 170

#### Enforcement Data for April 2013

Period	TOD	# Hours	# Officers	Citations	Warnings	FI	Criminal	TOTAL CONTACTS
4/4/2013	1500-1700	2	3	2	20	0	0	22
4/5/2013	1530-1630	1	4	5	4	0	0	9
4/6/2013	2300-0300	4	2	5	2	4	0	11
4/11/2013	1530-1730	2	5	10	7	0	1	18
4/12/2013	1530-1730	2	5	11	21	0	1	33
4/13/2013	2300-0700	8	3	2	14	0	4	20
4/18/2013	1600-1700	1	2	4	5	0	0	9
4/24/2013	0100-0400	3	3	0	3	2	0	5
4/25/2013	1530-1730	2	5	18	5	0	0	23
4/26/2013	1600-1730	1.5	3	0	20	0	0	20
<b>TOTALS</b>		<b>26.5</b>		<b>57</b>	<b>101</b>	<b>6</b>	<b>6</b>	<b>170</b>

# Operation Accident Data

## Section 2: Accident Data

### All Accidents Data (Excluding Private Property)

Total Number of Accidents in 2013: 23  
 Monthly 5YR Average: 25.6  
 Total Number of Accidents in 2012: 24  
 Change from 2013 and 5YR Average: -10.16% Decrease  
 Change from 2013 and 2012: -4.17% Decrease

### All Accidents Data (Excluding Private Property)

Date: APRIL 2013

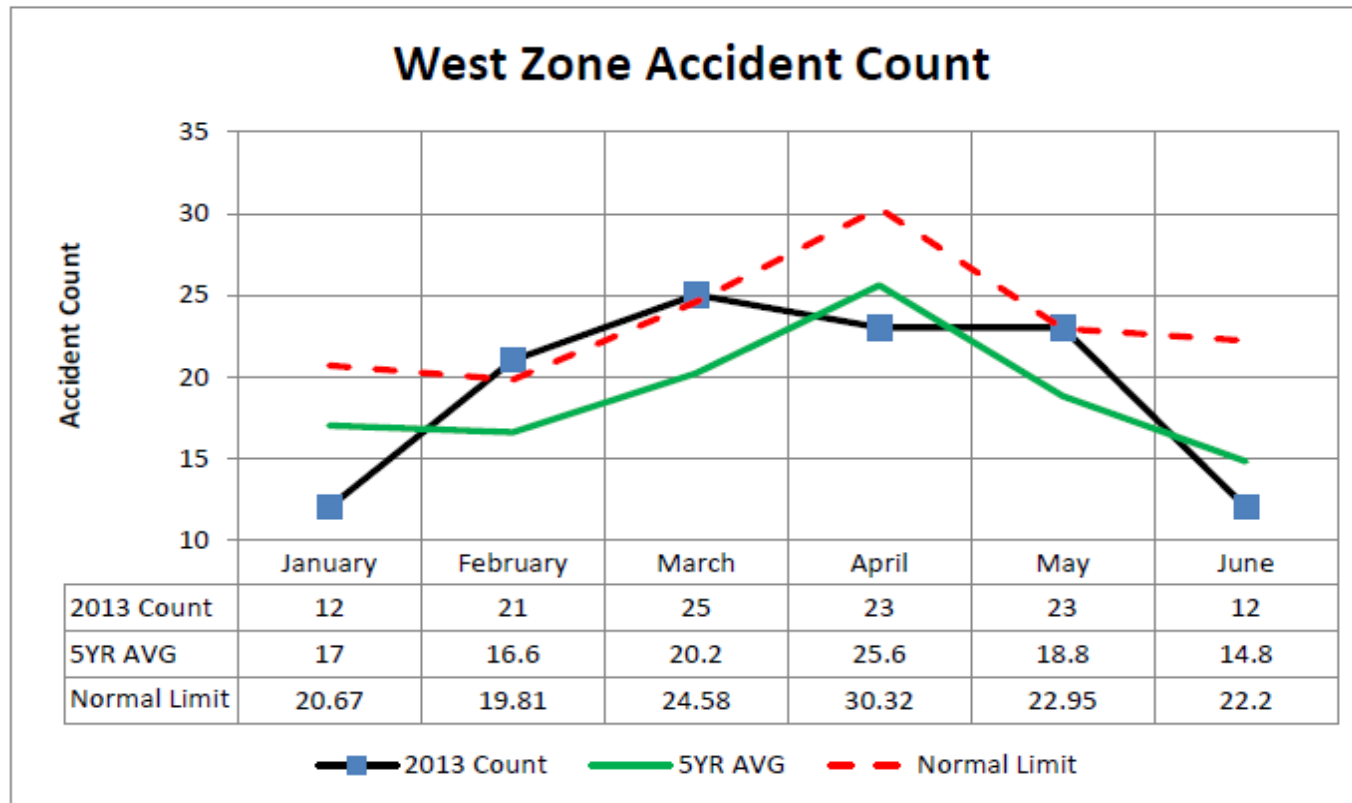
Application Area: WEST DDACTS Zone with 500 FT Buffer

INSIDE DDACTS APPLICATION AREA												
Category	2008	2009	2010	2011	2012	5YR AVG	STDEV	2013	Z-Score	Sign.	Change from 5YR AVG	Change from 2012
Injury Accidents	7	6	4	14	4	7	4.12	7	0.00	0.50	0.00%	75.00%
Non-Injury Accidents	16	18	19	20	20	18.6	1.67	16	-1.55	0.06	-13.98%	-20.00%
All Accidents	23	24	23	34	24	25.6	4.72	23	-0.55	0.29	-10.16%	-4.17%

OUTSIDE DDACTS APPLICATION AREA												
Category	2008	2009	2010	2011	2012	5YR AVG	STDEV	2013	Z-Score	Sign.	Change from 5YR AVG	Change from 2012
Injury Accidents	68	60	68	55	51	60.4	7.64	56	-0.58	0.28	-7.28%	9.80%
Non-Injury Accidents	142	137	150	135	129	138.6	7.89	152	1.70	0.96	9.67%	17.83%
All Accidents	210	197	218	190	180	199	15.23	208	0.59	0.72	4.52%	15.56%

# Operation Results

## Section 3: Accident Trend based on Five Year Data



## Difference between 5 Year Average, 2013 Accident Counts and Observed Differences

Data	January	February	March	April	May	June
2013 Count	12	21	25	23	23	12
5 YR AVG	17	16.6	20.2	25.6	18.8	14.8
Difference	-5	4.4	4.8	-2.6	4.2	-2.8

# Information Sharing & Outreach

- **Monthly Staff briefings**
- **Monthly RECON product to DA**
- **Weekly crime reports to Police personnel**
- **Attend Patrol shift briefings**
  - Gather Intel
  - Educate Officers
- **Get away from the Office**
  - Attend division meetings
  - Ride along with Patrol
  - Spend time with Officers & Command (Customers)



# Monitoring, Evaluation and Adjustments

- Monitor deployment of project
- Evaluate monthly operations
- Officer feedback on analysis products
- Adjust as needed

# Outcomes

- 6 Month Results – City Wide Stats

CITY WIDE STATS												
Category	2008	2009	2010	2011	2012	5YR AVG	STDEV	2013	Z-Score	Significance	Change from 5YR AVG	Change from 2012
Injury Accidents	383	351	328	314	339	343	26.20	334	-0.34	0.37	-2.62%	-1.47%
Non-Injury Accidents	851	823	826	821	900	844.2	33.46	887	1.28	0.90	5.07%	-1.44%
All Accidents	1234	1174	1154	1135	1239	1187.2	47.10	1221	0.72	0.76	2.85%	-1.45%
Forcible Rape	29	25	23	37	36	30	6.32	41	1.74	0.96	36.67%	13.89%
Robbery	26	33	16	41	35	30.2	9.58	33	0.29	0.62	9.27%	-5.71%
Aggravated Assault	40	34	33	38	28	34.6	4.67	52	3.73	1.00	50.29%	85.71%
Burglary	383	355	397	334	392	372.2	26.83	432	2.23	0.99	16.07%	10.20%
Larceny from Vehicle	417	508	479	604	578	517.2	75.52	461	-0.74	0.23	-10.87%	-20.24%
Motor Vehicle Theft	158	92	91	91	116	109.6	29.09	142	1.11	0.87	29.56%	22.41%
All Crimes	1053	1047	1039	1145	1185	1093.8	66.70	1161	1.01	0.84	6.14%	-2.03%

- Accidents

- 1.45% change from 2012

- Crimes

- 2.03% change from 2012

- Larceny from Vehicle – 20.24% change from 2012

# WEST Zone Stats

WEST ZONE DDACTS STATS												
Category	2008	2009	2010	2011	2012	5YR AVG	STDEV	2013	Z-Score	Significance	W Change from 5YR AVG	Change from 2012
Injury Accidents	25	31	20	38	17	26.2	8.47	31	0.57	0.71	18.32%	82.35%
Non-Injury Accidents	77	94	93	114	123	100.2	18.29	97	-0.17	0.43	-3.19%	-21.14%
<b>All Accidents</b>	<b>102</b>	<b>125</b>	<b>113</b>	<b>152</b>	<b>140</b>	<b>126.4</b>	<b>20.11</b>	<b>128</b>	<b>0.08</b>	<b>0.53</b>	<b>1.27%</b>	<b>-8.57%</b>
Forcible Rape	0	0	0	1	1	0.4	0.55	1	1.10	0.86	150.00%	100.00%
Robbery	2	2	1	1	2	1.6	0.55	4	4.38	1.00	150.00%	100.00%
Aggravated Assault	0	1	4	4	2	2.2	1.79	4	1.01	0.84	81.82%	100.00%
Burglary	25	16	22	22	17	20.4	3.78	9	-3.01	0.00	-55.88%	-47.06%
Larceny from Vehicle	16	45	24	24	44	30.6	13.11	12	-1.42	0.08	-60.78%	-72.73%
Motor Vehicle Theft	6	3	7	2	7	5	2.35	6	0.43	0.67	20.00%	-14.29%
<b>All Crimes</b>	<b>49</b>	<b>67</b>	<b>58</b>	<b>54</b>	<b>73</b>	<b>60.2</b>	<b>9.73</b>	<b>36</b>	<b>-2.49</b>	<b>0.01</b>	<b>-40.20%</b>	<b>-50.68%</b>

- **Accidents**
  - - 8.57% change from 2012
- **Crime**
  - - 50.68% change from 2012
  - **Larceny from Vehicle: - 72.73% change from 2012**
  - **Burglary: - 47.06%**
  - **Motor Vehicle Theft: - 14.29%**

# EAST Zone Stats

EAST ZONE DDACTS STATS												
Category	2008	2009	2010	2011	2012	5YR AVG	STDEV	2013	Z-Score	Significance	E Change from 5YR AVG	Change from 2012
Injury Accidents	30	35	33	31	24	30.6	4.16	31	0.10	0.54	1.31%	29.17%
Non-Injury Accidents	69	63	70	71	84	71.4	7.70	71	-0.05	0.48	-0.56%	-15.48%
<b>All Accidents</b>	<b>99</b>	<b>98</b>	<b>103</b>	<b>102</b>	<b>108</b>	<b>102</b>	<b>3.94</b>	<b>102</b>	<b>0.00</b>	<b>0.50</b>	<b>0.00%</b>	<b>-5.56%</b>
Forcible Rape	0	2	3	1	3	1.8	1.30	5	2.45	0.99	177.78%	400.00%
Robbery	4	3	1	5	3	3.2	1.48	4	0.54	0.71	25.00%	300.00%
Aggravated Assault	9	9	5	2	1	5.2	3.77	5	-0.05	0.48	-3.85%	400.00%
Burglary	46	25	34	30	28	32.6	8.17	30	-0.32	0.38	-7.98%	7.14%
Larceny from Vehicle	33	22	29	36	31	30.2	5.26	16	-2.70	0.00	-47.02%	-48.39%
Motor Vehicle Theft	19	10	9	9	8	11	4.53	9	-0.44	0.33	-18.18%	12.50%
<b>All Crimes</b>	<b>111</b>	<b>71</b>	<b>81</b>	<b>83</b>	<b>74</b>	<b>84</b>	<b>15.87</b>	<b>69</b>	<b>-0.94</b>	<b>0.17</b>	<b>-17.86%</b>	<b>-6.76%</b>

- **Accidents**
  - - 5.56% change from 2012
- **Crime**
  - - 6.76% change from 2012
  - Larceny from Vehicle: - 48.39% change from 2012
  - Burglary: + 7.14% change from 2012
  - Motor Vehicle Theft: + 12.50% change from 2012

# Outside Zone Stats

OUTSIDE DDACTS STATS												
Category	2008	2009	2010	2011	2012	5YR AVG	STDEV	2013	Z-Score	Significance	C Change from 5YR AVG	Change from 2012
Injury Accidents	335	298	284	251	305	294.6	30.68	277	-0.57	0.28	-5.97%	-9.18%
Non-Injury Accidents	835	793	774	759	835	799.2	34.83	866	1.92	0.97	8.36%	3.71%
<b>All Accidents</b>	<b>1170</b>	<b>1091</b>	<b>1058</b>	<b>1010</b>	<b>1140</b>	<b>1093.8</b>	<b>63.74</b>	<b>1143</b>	<b>0.77</b>	<b>0.78</b>	<b>4.50%</b>	<b>0.26%</b>
Forcible Rape	29	23	20	36	34	28.4	6.88	35	0.96	0.83	23.24%	2.94%
Robbery	20	28	14	35	29	25.2	8.23	25	-0.02	0.49	-0.79%	-13.79%
Aggravated Assault	31	24	24	32	24	27	4.12	43	3.88	1.00	59.26%	79.17%
Burglary	312	314	338	282	347	318.6	25.43	393	2.93	1.00	23.35%	13.26%
Larceny from Vehicle	368	441	426	542	503	456	67.96	433	-0.34	0.37	-5.04%	-13.92%
Motor Vehicle Theft	133	79	75	80	101	93.6	24.24	127	1.38	0.92	35.68%	25.74%
<b>All Crimes</b>	<b>893</b>	<b>909</b>	<b>897</b>	<b>1007</b>	<b>1038</b>	<b>948.8</b>	<b>68.42</b>	<b>1056</b>	<b>1.57</b>	<b>0.94</b>	<b>11.30%</b>	<b>1.73%</b>

- **Accidents**
  - **+ 0.26% change from 2012**
- **Crime**
  - **+ 1.73% change from 2012**
  - **Larceny from Vehicle: - 13.92% change from 2012**
  - **Burglary: +13.26% change from 2012**
  - **Motor Vehicle Theft: +25.74% change from 2012**

# Zone Comparison

6 Month Results Change from 2012

Category	West Zone	East Zone	Outside Zone
Accidents	- 8.57%	- 5.56%	+ 0.26%
All Crime	- 50.68%	- 6.76%	+ 1.73%
Larceny From Vehicle	- 72.73%	- 48.36%	- 13.26%
Burglary	- 47.06%	+ 7.14%	+ 13.26%
Motor Vehicle Theft	- 14.27%	+ 12.5%	+ 25.74%
Zone Monthly Ops (6 Months)	3 Months	2 Months	NA
Enforcement Hours (6 Months)	82.5	99	NA
Total Contacts (6 Months)	350	467	NA

# Questions

## Jason Redden

Norman Police Department  
201-B West Gray Street  
Norman, OK 73069

405.366.5421

[jason.redden@normanok.gov](mailto:jason.redden@normanok.gov)

*"The only thing necessary for the triumph of evil is for good men to do nothing"*  
*Edmund Burke*

# Norman Police Department

Norman, Oklahoma

## DDACTS Implementation



September 24, 2013  
16<sup>th</sup> Annual OKSCAUG