

GSI GOES MOBILE!

Building the
LHPD Mobile App



the
**Chickasaw
Nation**



Boundaries & Tribal Jurisdiction

NORTHWEST

PRECINCT

NORTHEAST

PRECINCT

SOUTH

PRECINCT

CHICKASAW NATION

Occupies 7,443 sq miles

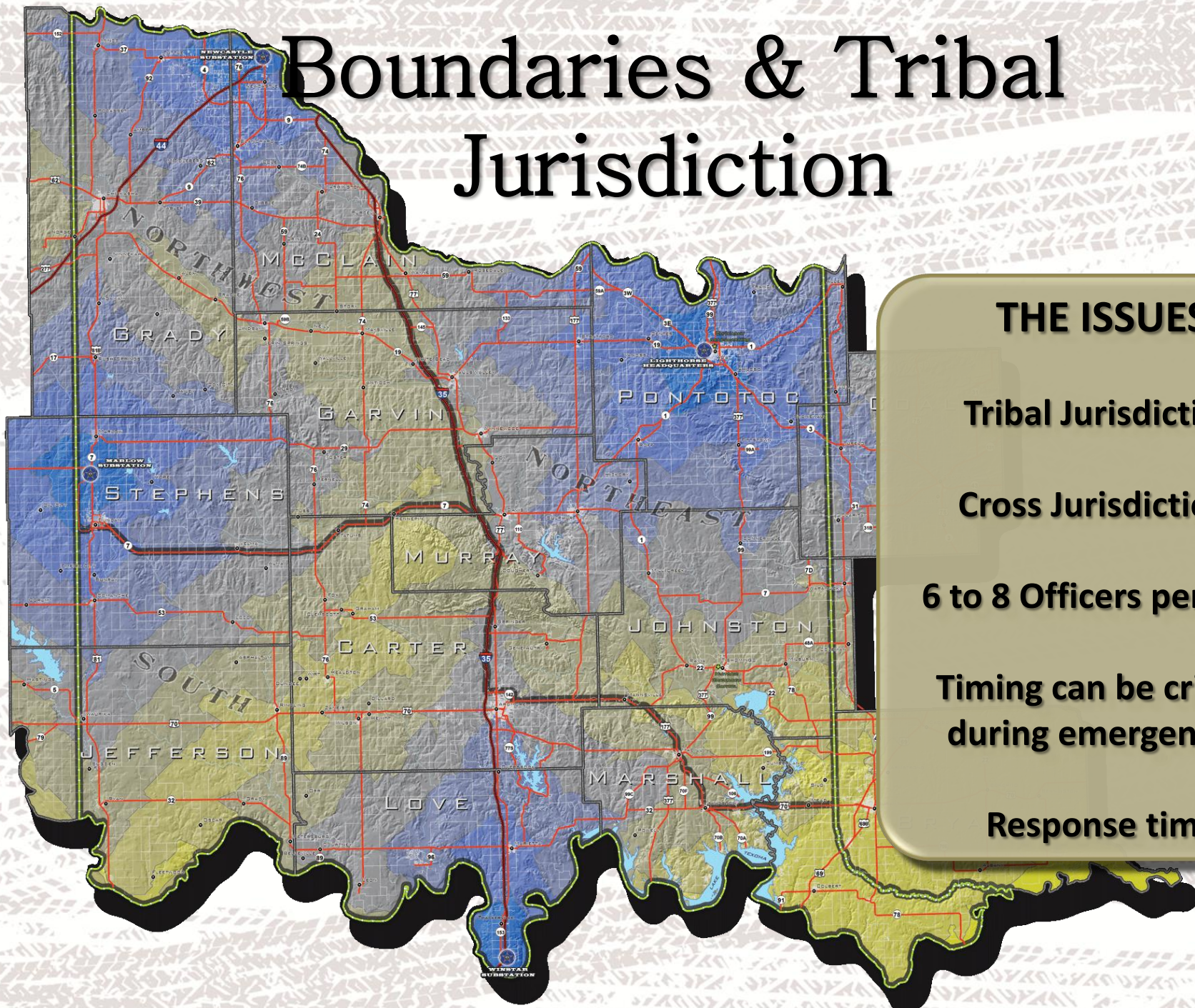
Covers 13 counties of South
Central Oklahoma

LHPD Headquarters
are in Ada

Three Precincts

Three substations

Boundaries & Tribal Jurisdiction



THE ISSUES

Tribal Jurisdiction

Cross Jurisdictions

6 to 8 Officers per shift

**Timing can be critical
during emergencies**

Response time

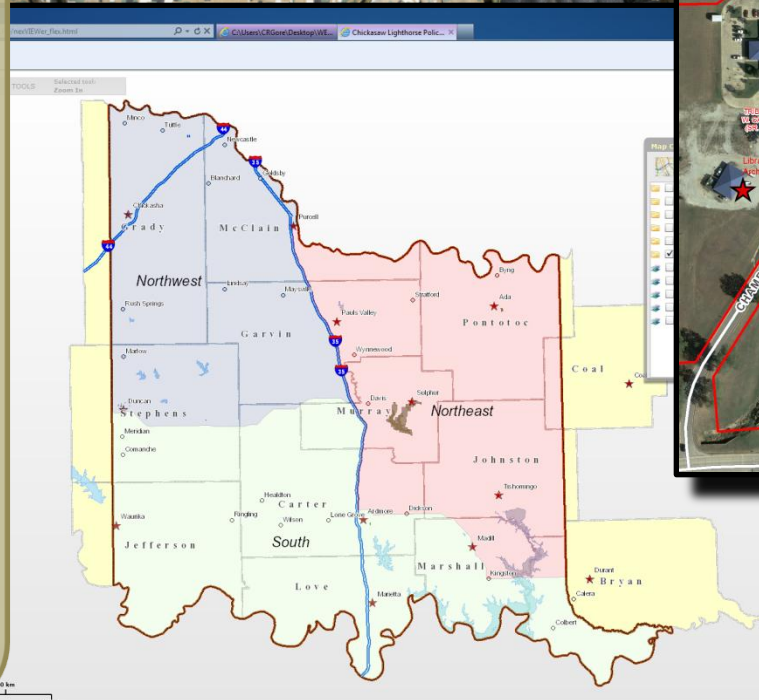
Benefits of GIS in Law Enforcement

The GSI web application provides a quick, and easy, way for tribal police to determine

- ~Tribal boundaries & jurisdiction**
- ~View tribally owned & allotted lands**
- ~Facilities with floor plans & pictures**
- ~Area Emergency Management**
- ~Services (police, sheriff & fire stations, and hospitals)**
- ~High resolution ortho & oblique imagery**

TACTICAL DECISIONS

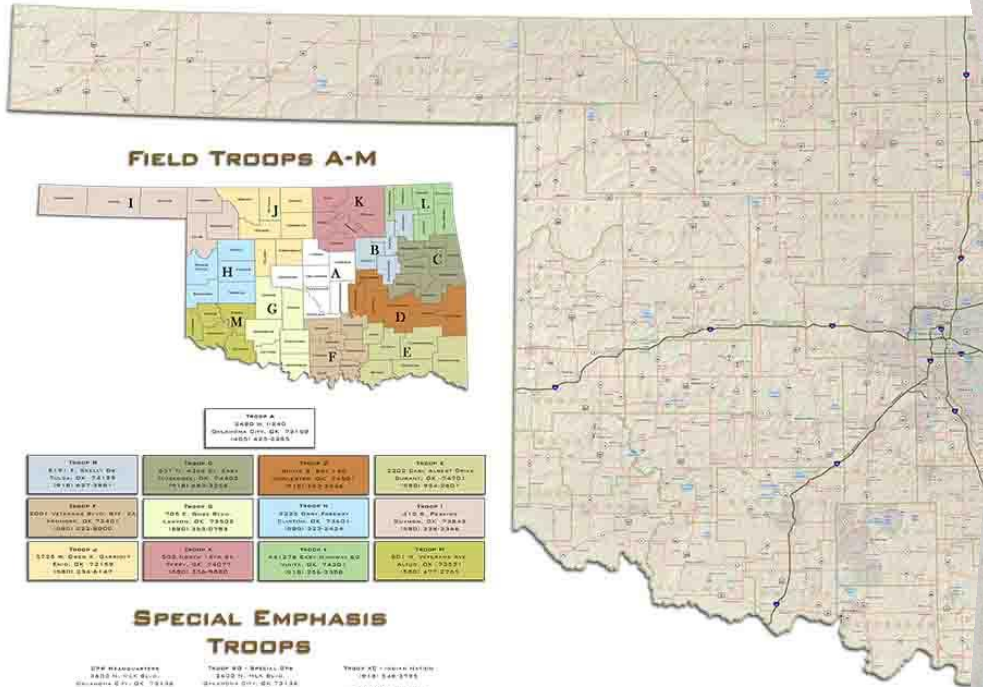
GIS allows officers to make more informed tactical decisions. By providing a visual depiction of a location and it's surrounding area.



Benefits of GIS in Law Enforcement



OKLAHOMA HIGHWAY PATROL Highways of Oklahoma



SPECIAL EMPHASIS TROOPS

UPR HEADQUARTERS 2400 N. MILBURN OKLAHOMA CITY, OK 73106 (405) 433-0335	Troop D - Boundary 2400 N. MILBURN OKLAHOMA CITY, OK 73106 (405) 433-0335	Troop E - Patrol 2400 N. MILBURN OKLAHOMA CITY, OK 73106 (405) 433-0335	Troop F - Enforcement 2400 N. MILBURN OKLAHOMA CITY, OK 73106 (405) 433-0335
---	---	---	--

LEGEND

- STATE CAPITAL
- COUNTY SEAT
- CITY / TOWN
- RIVER
- INTERSTATE
- TURNPIKE
- STATE / US HIGHWAY
- LAKE
- COUNTY
- CITY BOUNDARY



GEOSPATIAL INFORMATION

Chickasaws provide maps to aid state troopers

By Randy Mitchell
City Editor

ADA — The Oklahoma Highway Patrol Troop F has new maps courtesy of the Chickasaw Nation. The maps were created after a request by OHP.

"By doing this, I know it will increase our response times when a trooper travels from one county to another," Troop F Captain Ronnie Hampton said. "It's going to increase our ability to plan when tornadoes, wildfires and things like that hit, and most importantly, when a trooper gets in a car chase that are on county roads, it will increase our dispatchers' ability to look at the map and tell where there is a T-intersection or a road dead-end so we can tell a trooper so he doesn't get into a car crash."

Smaller maps will be given to troopers in the field while the large maps will be placed at Troop F headquarters in Ardmore for dispatchers. Hampton said although laminated, the troop will cover the

larger maps with Plexiglas so they can be written on during emergencies.

Corey Gillum, GIS technician with the Chickasaw Nation and creator of the maps, said it took some time to create the maps, but it wasn't too hard.

"We have a big database with all this information in it," he said. "We went through it and got the proper road names and got them all labeled."

John Ellis, GIS director, said the Chickasaw Nation already had the information concerning roads in the area.

"What made it easy for us to create this map is that we have seven counties that are located in our service area, so with all the data already collected, it was really easy to go look at the data before the Chickasaw Nation said we were a real boon to Troop F."

"On behalf of the Highway Patrol, Ardmore and counties that Troop F serves, I thank the Chickasaw Nation for their people to project."

"Obviously, a bit of time has been spent on this project, but it's worth it."

The Ada News

Your Local Information Source

Sunday, March 25, 2012

Ada, Oklahoma

www.theadanews.com

Vol. 109 No. 10

More than \$210 worth of coupons inside today

Chickasaw Nation goes high-tech to make connections

By Tony Choate
Chickasaw Nation

Finding our way to a new location using GPS, or the Global Positioning System, has become such an everyday occurrence that we may sometimes wonder how we ever found our way without it.

While many of us don't think of GPS as much more than a way to find a new restaurant or hotel, GPS is only one part of a much larger Geographic Information System (GIS) which captures, manages, analyzes and displays geographic information in the form of maps, globes, reports, charts, databases and websites.

The award-winning Chickasaw Nation Geographic Information (GSI) department headed by director John Ellis, compiles information from that larger system to provide a myriad of useful services.

"The Geospatial team provides information and services which help improve the efficiency and effectiveness of our emergency services and enhances the effectiveness of our economic development efforts," said Gov. Bill Anoatubby. "They also develop maps and other information which help us offer more effective social services and better preserve our history and heritage."

Our case studies involving work by the Chickasaw Nation GSI department will be published in the upcoming book, *Tribal GIS: Supporting Tribal Decision Making*. These case studies involve developing more efficient road networks, cultural preservation efforts and enhancing emergency services.

Ellis said that they are con-



The Process of Making it all Mobile



Research & Resources



Mobile GIS

Mobile GIS extends the reach of ArcGIS to a broad range of mobile devices—including rugged Windows Mobile handhelds, Windows Tablet PCs, in-vehicle mounted systems, iPads, iPhones and iPod Touch devices, Android phones and tablets and Windows phone devices. You can use a Mobile GIS solution on these platforms to view, collect, and update your geographic information.

Click below to start using:

- [ArcGIS Mobile](#)
- [ArcGIS for iOS](#)
- [ArcGIS for Android](#)
- [ArcGIS for Windows Phone](#)
- [ArcPad](#)

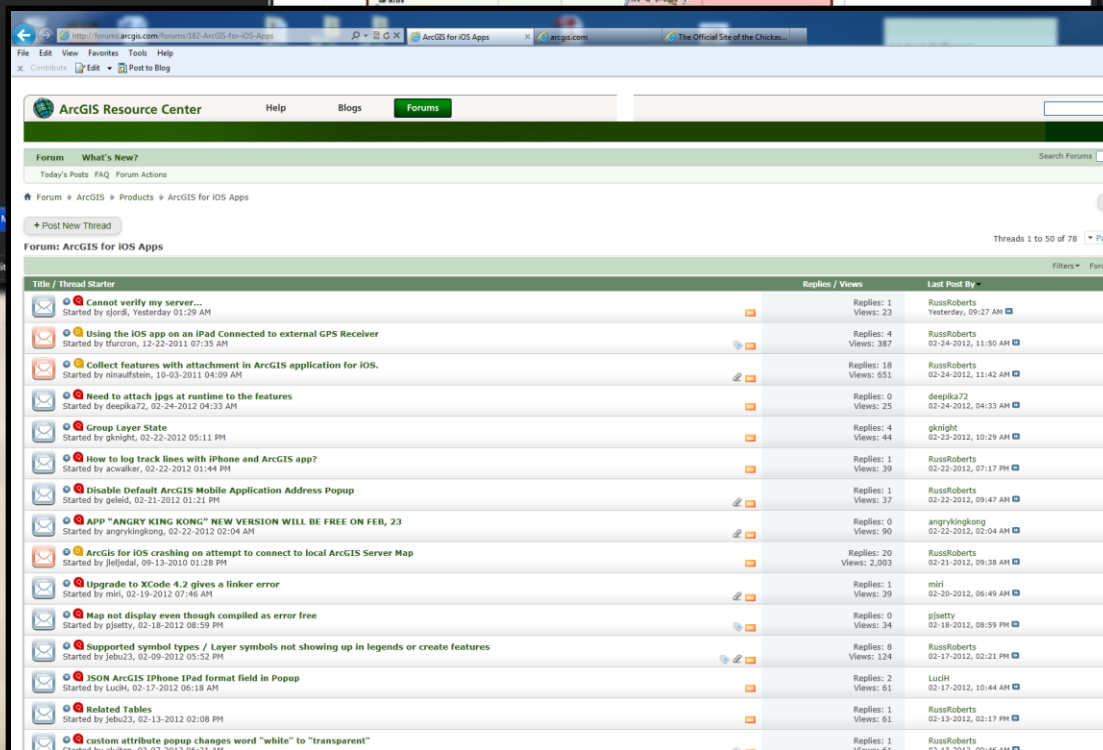


[English](#) [中文](#) [Français](#) [Deutsch](#) [日本語](#) [Español](#)

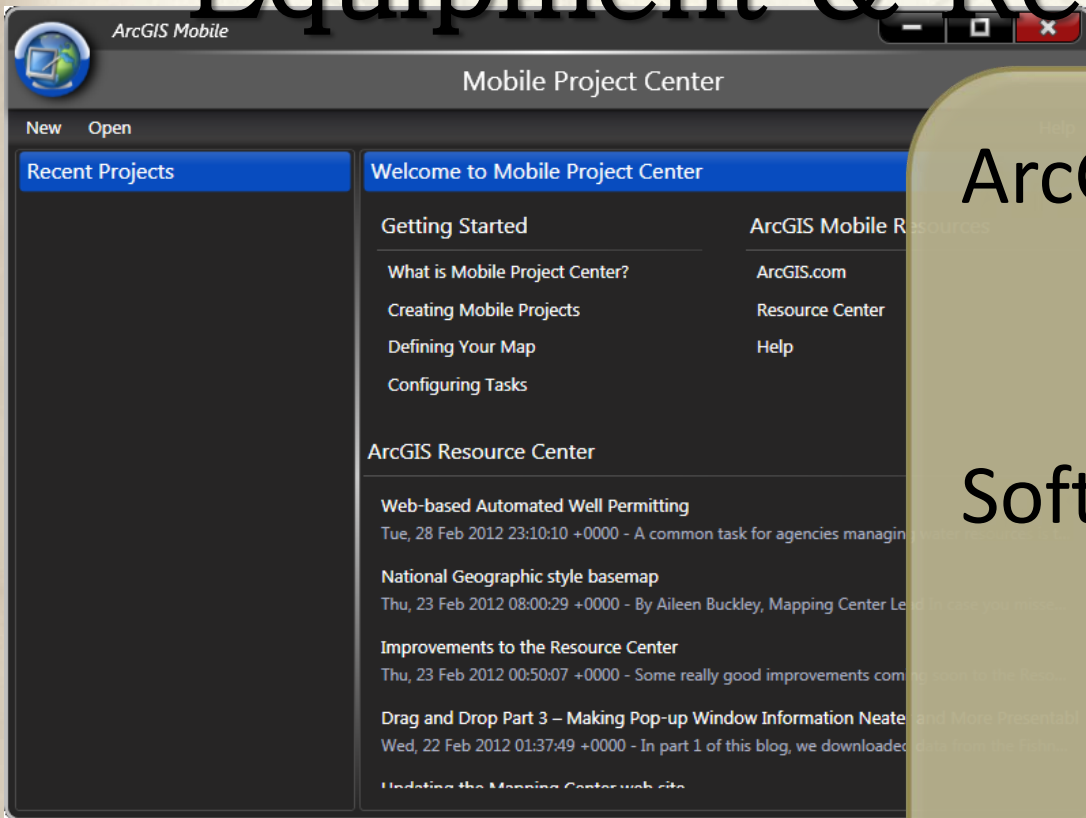


Take advantage of
all available
resources

- ~ ArcGIS Mobile
- ~ ArcGIS iOS App
- ~ Online Videos
- ~ Resource Center
- ~ Online Forums



Equipment & Requirements



ArcGIS Server 10.0

~Version 9.x map services
~10.0 ArcGIS Server to host mobile maps.

Software Requirements

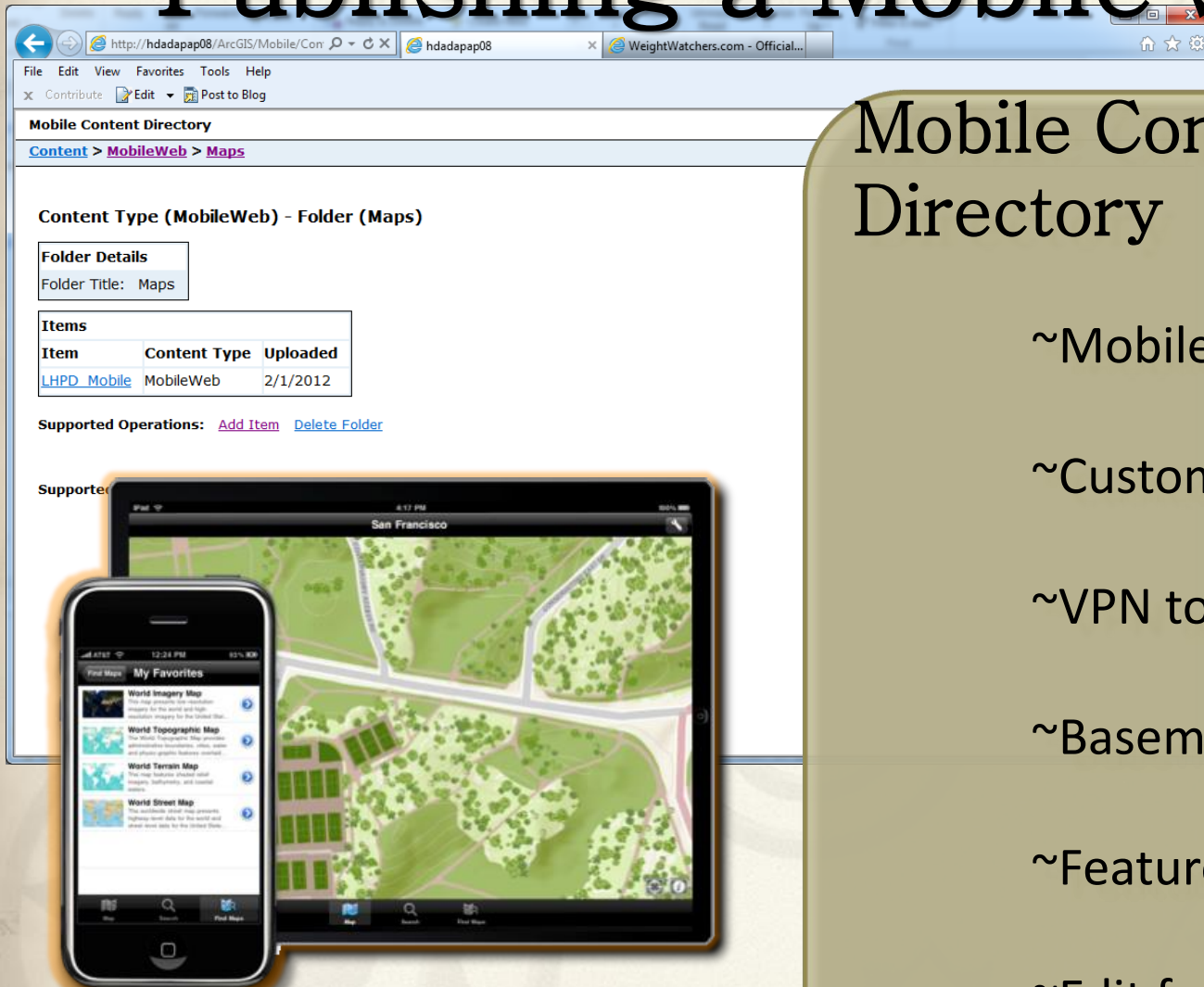
~ArcGIS Mobile 10
~iPhones/iPads requires ESRI app or the ESRI iOS code

Equipment Required

~Any laptop or handheld device running Windows.
~iPhone/iPad

A screenshot of a web form for creating a new project. At the top, there's a question 'Overwrite existing file?' with radio buttons for 'True' and 'False', where 'False' is selected. Below this, the form is organized into a table-like structure with four rows: 'Name', 'Title', 'Description', and 'Snippet'. Each row has a text input field. The 'Description' and 'Snippet' fields have vertical scrollbars. At the bottom, there's a row labeled 'Extent' with an input field.

Publishing a Mobile Service



Mobile Content Directory

~Mobile content server

~Custom maps/services

~VPN to a private server

~Basemap services

~Feature services

~Edit features

~Collect data



Available on the
App Store

Publishing a Mobile Service

Mobile Content Directory

[Content](#) > [MobileWeb](#)

Content Type (MobileWeb)

Folders

[Maps](#)

Supported Operations: [Create Folder](#)

Mobile C

[Content](#)

Child Resources: [All Items](#)

Supported Interfaces: [REST](#)

Content Type (MobileWeb) - Folder (Maps)

Folder Details

Folder Title: Maps

Items

Item	Content Type	Uploaded
------	--------------	----------

Supported Operations: [Add Item](#) [Delete Folder](#)

Supported Interfaces: [REST](#)

Mobile Content Directory

Private services can be accessed by leveraging the VPN capabilities of a smartphone device.

To accomplish this your customized MXD must be published to the ArcGIS Server as a mobile service. Once the service is published, it is listed in the Mobile Content Directory of Content Server in the 'Maps' folder.

Understanding JSON

```
{
  "operationalLayers": [{
    "url": "http://hdadapap08/ArcGIS/rest/services/LHPD/LHPD_Holdings/MapServer",
    "id": 0,
    "visibility": true,
    "visibleLayers": [
      0,
      1,
      3
    ],
    "opacity": 1,
    "title": "Mobile_Holdings",
    "layers": [
      {
        "id": 1,
        "popupInfo": {
          "title": "Chickasaw Nation Facilities",
          "fieldInfos": [
            {
              "fieldName": "Fac_Name",
              "label": "Facility",
              "isEditable": false,
              "tooltip": "",
              "visible": true,
              "stringFieldOption": "textbox"
            },
            {
              "fieldName": "Address",
              "label": "Address",
```

Map Format

JSON (JavaScript Object Notation) is a lightweight text-based code derived from JavaScript.

Before the map is added to the mobile content server, it must be composed.

Basically composing a map means telling the server which layers are operational layers and the basemap layer using JSON.

JSON is the code used by the mobile content server to format the contents of a map.

Understanding JSON

```
{
  "operationalLayers": [{
    "url": "http://hdadapap08/ArcGIS/rest/services/LHPD/LHPD_Holdings/MapServer",
    "id": 0,
    "visibility": true,
    "visibleLayers": [
      0,
      1,
      3
    ],
    "opacity": 1,
    "title": "Mobile_Holdings",
    "layers": [
      {
        "id": 1,
        "popupInfo": {
          "title": "Chickasaw Nation Facilities",
          "fieldInfos": [
            {
              "fieldName": "Fac_Name",
              "label": "Facility",
              "isEditable": false,
              "tooltip": "",
              "visible": true,
              "stringFieldOption": "textbox"
            },
            {
              "fieldName": "Address",
              "label": "Address",

```

Map Format

For each layer type, certain information is required.

~URL-this is the URL to the service

~Visibility – whether or not the layer is visible

~Opacity – a number that defines the transparency

~Title – the title used in the legend

Attribute information is coded here as well.

Understanding JSON

Add Item(MobileWeb - Maps)

Text	<input type="text"/>
Item	<input type="text"/>
Overwrite existing file? <input type="radio"/> True <input checked="" type="radio"/> False	
Name	<input type="text"/>
Title	<input type="text"/>
Description	<input type="text"/>
Snippet	<input type="text"/>
Extent	<input type="text"/>
Thumbnail	<input type="text"/> <input data-bbox="633 1125 776 1156" type="button" value="Browse..."/>
Type	<input type="text" value="Web Map"/>
Format:	<input type="text" value="HTML"/>
<input type="button" value="Add Item"/>	

Adding Your Map

- ~ Validate the JSON
- ~ Online validator
- ~ Upload the service to the mobile content server
- ~ click 'Add Item'

The 'Add Item' page requires that you enter a number of details in addition to the formatted JSON code.

Entering the Map

Add Item(MobileWeb - Maps)

Text	{ "operationalLayers": [{ "url": "http://hdadapap08/ArcGIServices/LHPD/LHPD_Holdings/MapServer",	
Item	LHPD_Mobile	
Overwrite existing file?	<input type="radio"/> True <input checked="" type="radio"/> False	
Name	LHPD Mobile	
Title	LHPD_Mobile	
Description	Mobile application featuring all 13 courts within the Lighthorse Police jurisdiction	
Snippet	Mobile application featuring all 13 courts within the Lighthorse Police jurisdiction	
Extent	342879,2521297,796057,2724643	
Thumbnail	<input type="text"/>	<input type="button" value="Browse..."/>
Type	Web Map	
Format:	HTML ▼	
<input type="button" value="Add Item"/>		

Required Details

~Text – this is the JSON code

~Item – map identifier

~Title – map name

~Name – user-friendly map name

~Description – long description detailing metadata

~Snippet – short description about the map

~Extent – bounding coordinates in xMin, yMin, xMax, yMax using GCS

~Thumbnail – optional map image

~Type – default to 'Web Map' (do not change)

~Format – leave this as HTML

Connecting to the Server

ArcGIS iPhone App

Open the ArcGIS application on the smartphone and navigate to 'ArcGIS Servers' and create a new connection.

Enter the URL of the content server. The address should include:
'host/instance/mobile'

All mobile services added to the Maps folder are will be listed!



Mobile GIS!



Benefits of Mobile GIS

Having real-time GIS provides Lighthorse officers with immediate access to:

~Tribal Boundaries

~Facilities

~Attributes

~GPS Location

Additional Information

In the Making

Work is currently underway to further enhance the GSI mobile application.

We are working on incorporation a field crew view to the current application.

This capability would allow officers to see each others field location and improve response times in emergency situations.

Although this will require some editing of the application code, the completed product will be a very useful resource.



the
**Chickasaw
Nation**

Any Questions?



GEOSPATIAL INFORMATION

CHICKASAW NATION DIVISION OF HOUSING & TRIBAL DEVELOPMENT

Acknowledgments

SPECIAL THANKS TO:

~ JOHN ELLIS, DIRECTOR

GEOSPATIAL INFORMATION

~ WAYNE SCRIBNER, ADMINISTRATOR

HOUSING & TRIBAL DEVELOPMENT

~ BILL ANOATUBBY, GOVERNOR

THE CHICKASAW NATION