

Where is your Emergency?

Presented by

Mark Voyles, Technology Coordinator
Edmond Fire Department



SCAUG 2012



Importance of Accuracy

- Safes Lives
 - Timely Response
 - Resource Management
- Starts with Engineering
 - Fire Prevention
 - CAD
 - Rip/Run & Apparatus



Importance of Accuracy

- Addressing
 - How other systems interpret data sets
 - Boulevard St or Circle Dr
- Routing
 - Fire Speed Limits
 - Divided Roads



Importance of Accuracy

- Address
 - How
 - Boule
- Routing
 - Fire S
 - Divide

Identify

Identify from: <Top-most layer>

☒ SDE.STREETS
 ☒ DANFORTH

Location: 2,122,440.340 243,332.622 Feet

Field	Value
SUBBASE_MATERIAL	<null>
BASE_THICKNESS	<null>
BASE_MATERIAL	<null>
MEDIAN	<null>
SPEED_LIMIT	40
STATUS	<null>
WARRANTYDATE	<null>
SURFACE_THICKNESS	<null>
CONDITION	<null>
CONDITIONDATE	<null>
MEDIAN_WIDTH	<null>
CURBS	<null>
SHOULDER	<null>
SHOULDER_WIDTH	<null>
SHOULDER_MATERIAL	<null>
SURFACE_STRENGTH	<null>
SUBBASE_THICKNESS	<null>
CONDITION_RATING	<null>
FACILITYID	12995
ZIPCODE_LEFT	73003
ZIPCODE_RGT	73003
CITY_LEFT	EDMOND
CITY_RGT	EDMOND
ONEWAY	0
EFD_SPEEDLIM	2
F_ZLEV	0

Identified 1 feature



Importance of Accuracy

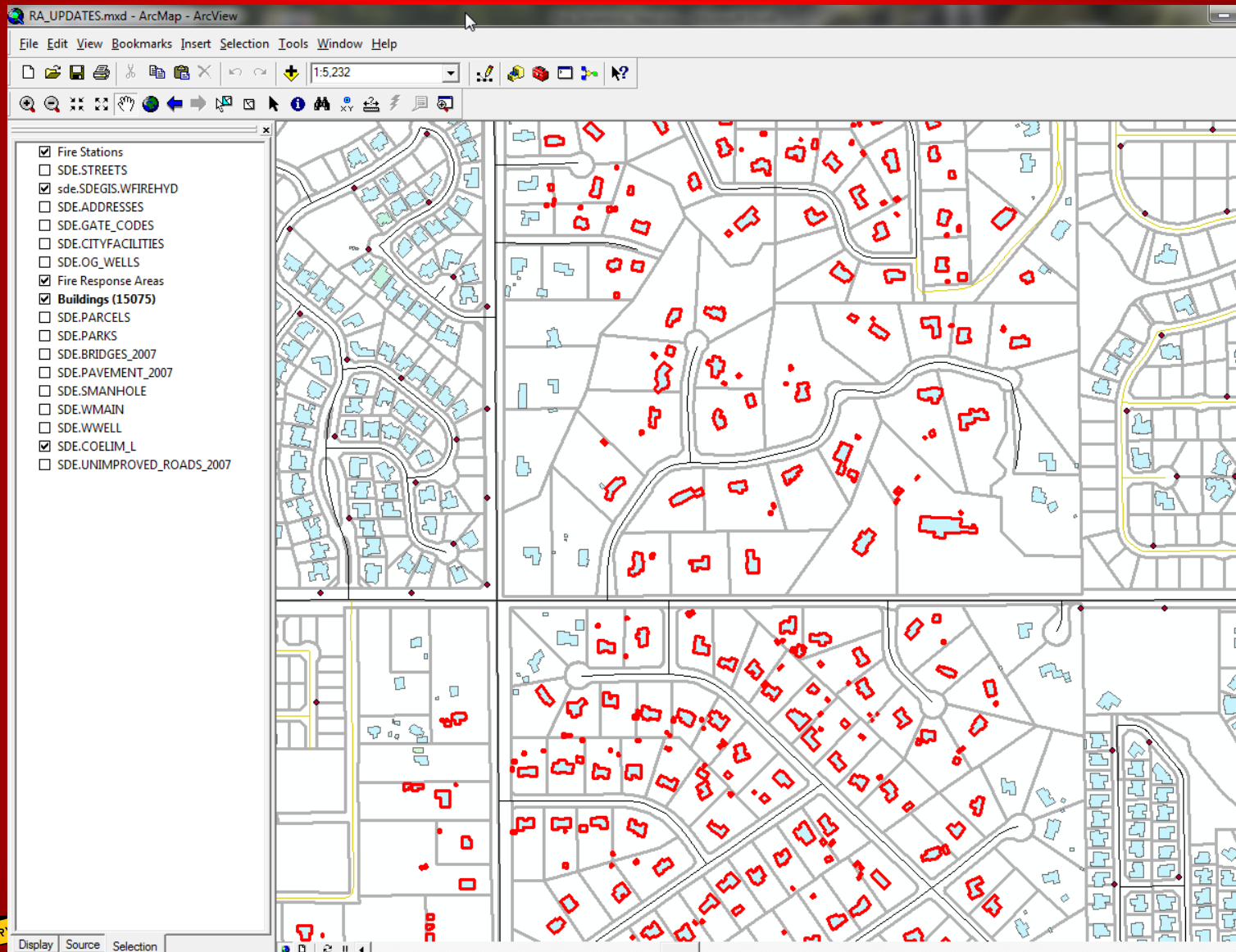
- Addressing
 - How other systems interpret data sets
 - Boulevard St or Circle Dr
- Routing
 - Fire Speed Limits
 - Divided Roads



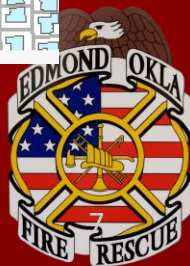
Knowledge from GIS

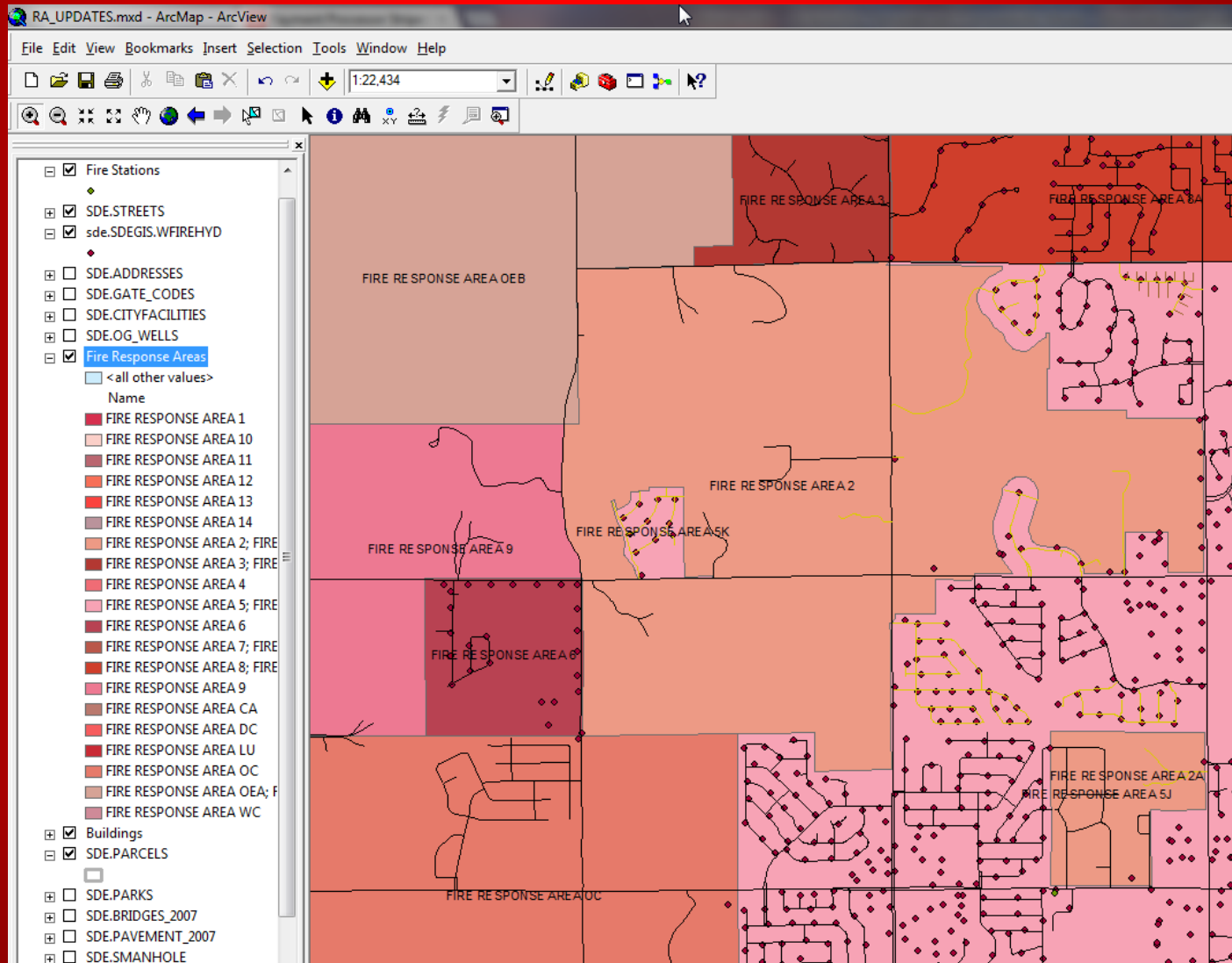
- ISO Ratings
- Hydrant Locating/Planning
- Printed and Electronic Map Pages
- Response Planning
- Station Planning
- Incident Awareness





SCAUG 2012

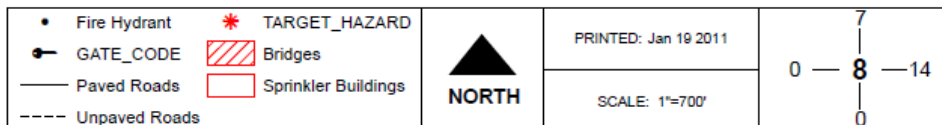
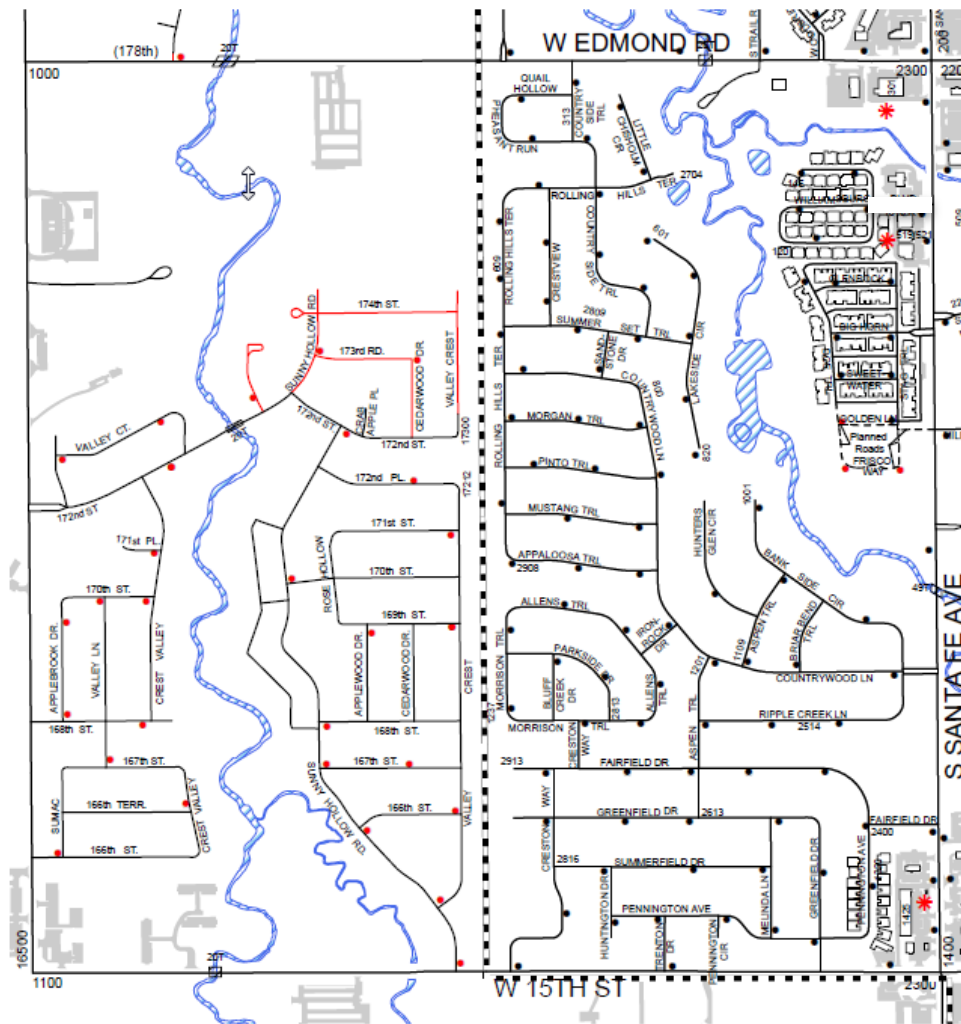




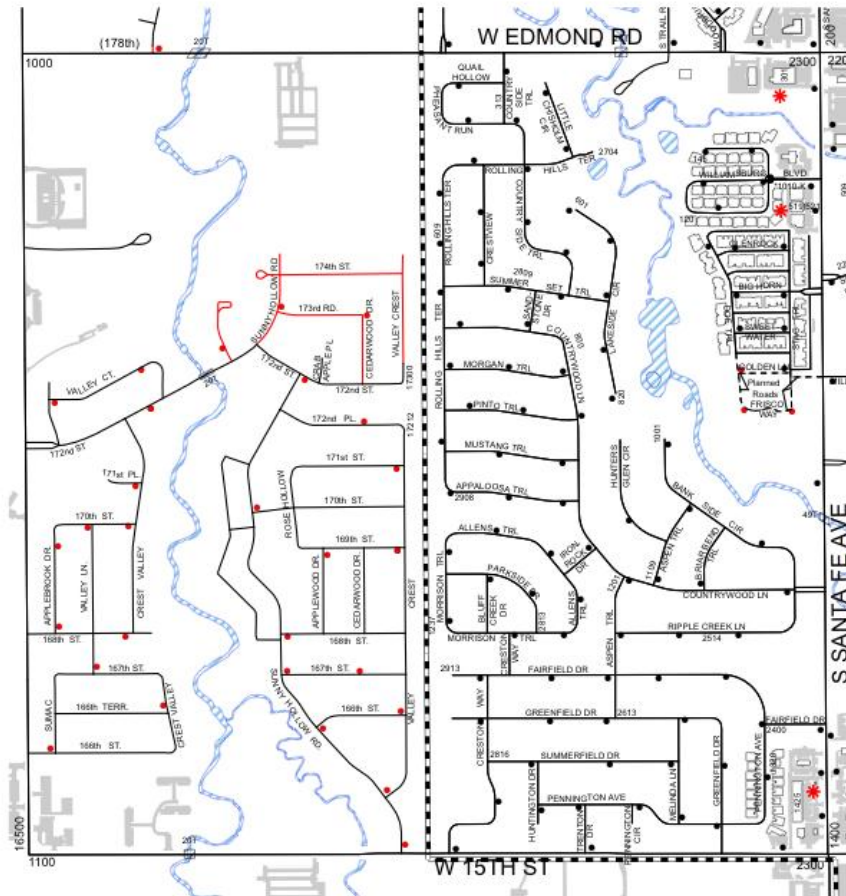
SCAUG 2012






SECTION 8



SECTION 8



• Fire Hydrant	* TARGET_HAZARD	 NORTH	PRINTED: Jan 19 2011	0 — 8 — 14 0
⚙ GATE_CODE	 Bridges		SCALE: 1"=700'	
— Paved Roads	 Sprinkler Buildings			
--- Unpaved Roads				



Aspen trl



Cancel

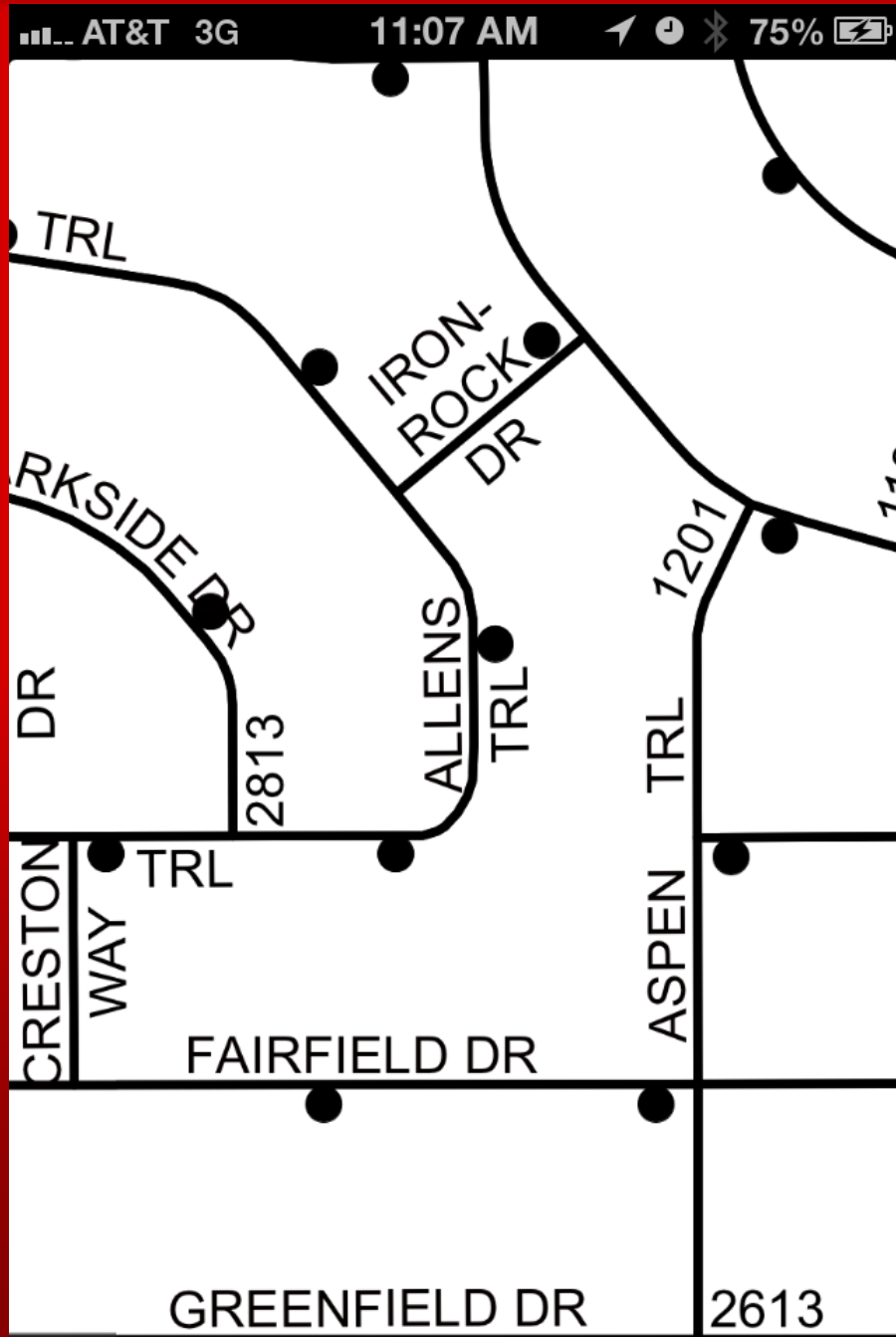
Text

SECTION008, Page 9
ASPEN TRL



Searching...





Computer Aided Dispatch

- Imported from GIS
 - Test System
 - Updates Approved
 - Production System
- Migrating to SDE
- AGOG and surrounding areas
- EMSA CAD to CAD



Incident Viewer- Incident ID [721]

Agency Type: Cross Street:

Nature/Problem: City:

Priority:

Apartment: Building:

Phone: Ext:

Caller Name:

Location Name: Received by:

Called From:

00:04:32

License Plate Information

Plate State

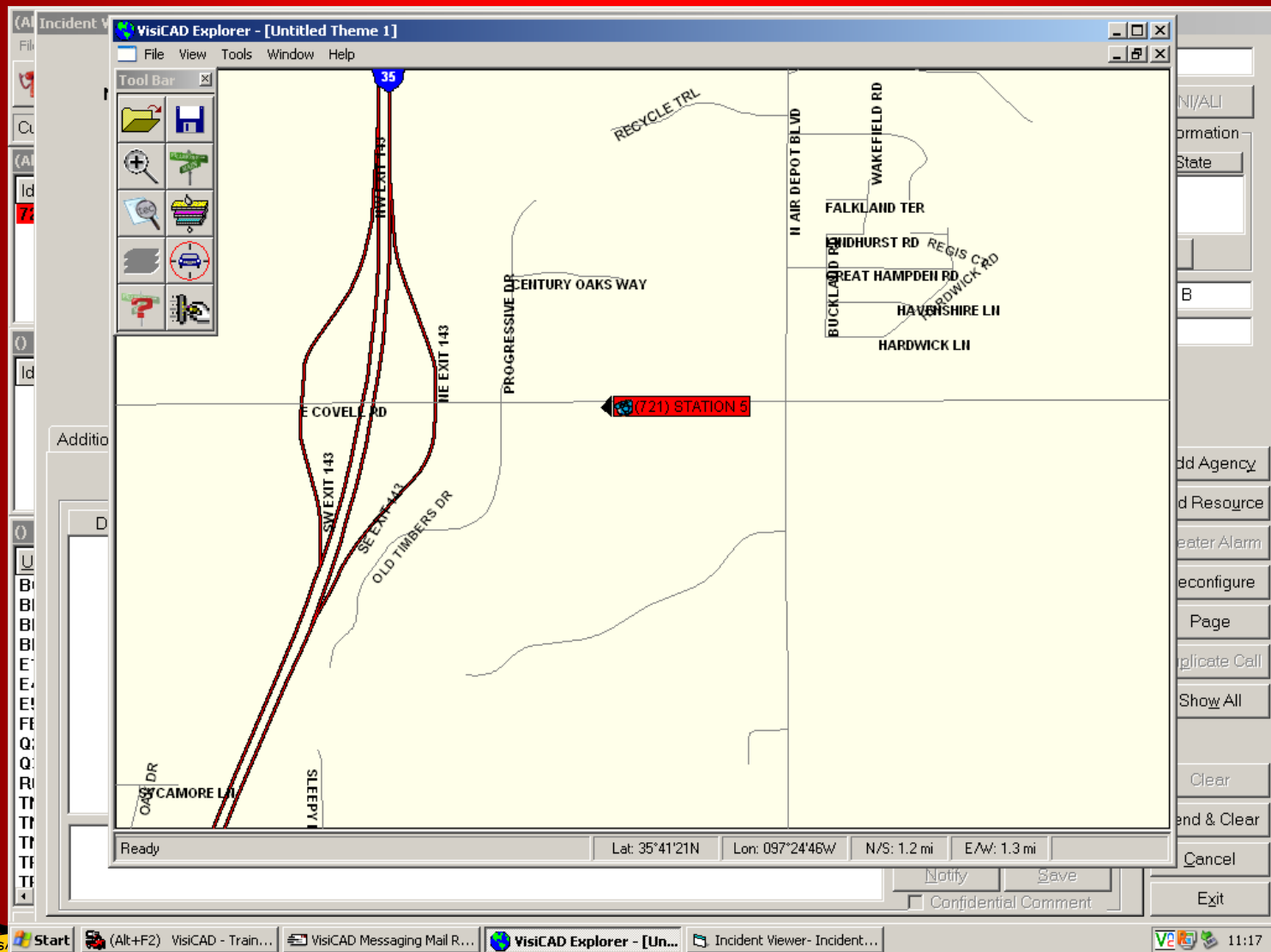
Map Page: Police Response District

Additional Information | Assignments | Activities | Call Backs | Comments/Notes | Edit Log | Times | Transport Info | User Data | Attachments

Date	Time	Initial	CC	Comment

☐ Confidential Comment





SCAUG 2012



Incident Viewer- Incident ID [721]

Initial Assignment - Incident ID [721] Incident Number [12-Fd10317]

Incident Type: Structure-Res Plan: E-E-E-T-R-BC Dispatch Level: Default Level: 1

Dynamic Plan

Plan

Resource / Capability	Order	> Time	Savings	Substitute With...	> Time	Savings	Respond With...	> Time	Agencies
Engine	1								
Engine	1								
Engine	1								
Truck	1								
Rescue	1								
Battalion Chief	1								

Additional Recommendation

☒ Resource ☐ Capability ☐ Resource Group

Vehicle Status E.T.A. Location

Recommend Cancel Accept

Send Response

Resource	Status	Meets Criteria	E.T.A.	Substituted For	Responding With	Location
E5	In Quarters	Engine	00:00:10			Fire Station 5
E4	In Quarters	Engine	00:04:25			Fire Station 4
E1	In Quarters	Engine	00:06:46			Fire Station 1
TRK1	In Quarters	Truck	00:06:46			Fire Station 1
R01	In Quarters	Rescue	00:06:46			Fire Station 1
BC1	In Quarters	Battalion Chief	00:06:46			Fire Station 1

Unable to Send Resource

Cancel Vehicles/Resources

Status	Elapsed

Delete Explorer

Refresh Commit Cancel



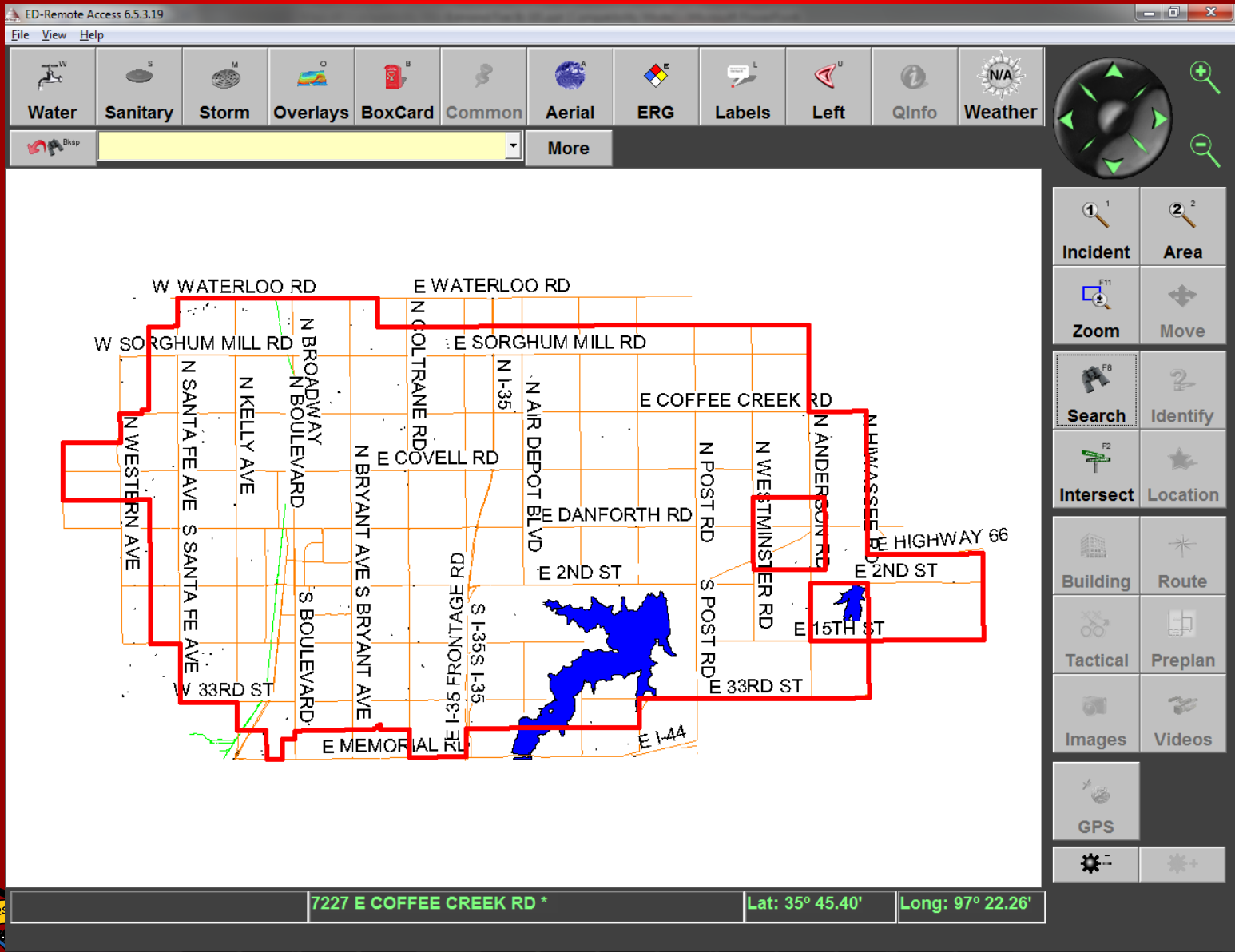
SCAUG 2012



Apparatus Usage

- Remote Access from Progressive Technologies
- Laptop Based
- Location pushed from CAD
- Data exported from SDE














← → ↻ edmondok.com/forms.aspx?FID=64 Edmond, OK - Official Website ☆ 🔍

+myConnections: Engage your community - connect to news, events and information you care about. [View more information...](#) Sign In

 **City of Edmond** A GREAT PLACE TO GROW

HELP CENTER COMMUNICATION CENTER GOVERNMENT CITY SERVICES HOW DO I? FAQs

 ONLINE BILL PAY  BUSINESS & DEVELOPMENT

 REPORT A CONCERN  TRAFFIC PROJECTS

Agendas & Minutes
Bids and Proposals
Jobs
Relocating to Edmond

Home > Forms

Shelter Registration

Before completing the form below, please make sure that your storm shelter is located within the corporate city limits of Edmond, Oklahoma.

Contact Information

Name*

Email

Address Line 1*

Address Line 2*

Phone*

Mobile

Shelter Information

Shelter Type*

If other, please provide additional information

Installed by?

Shelter Location*

If other, please provide additional information



ED-Remote Access 6.5.3.19 - Responding to : 5300 E COVELL RD

File View Help

Water Sanitary Storm **Overlays** BoxCard Common Aerial ERG Labels Left **QInfo** Weather

More **STORM SHELTERS**

BIKE TRAILS
☒ CITY LIMITS
☒ STORM SHELTERS
☐ MAJOR ROADS
☐ CITY FACILITIES
☐ SCHOOLS
☐ PARKS
☐ OG-WELLS
☐ TOPO-LINES
☐ PONDS

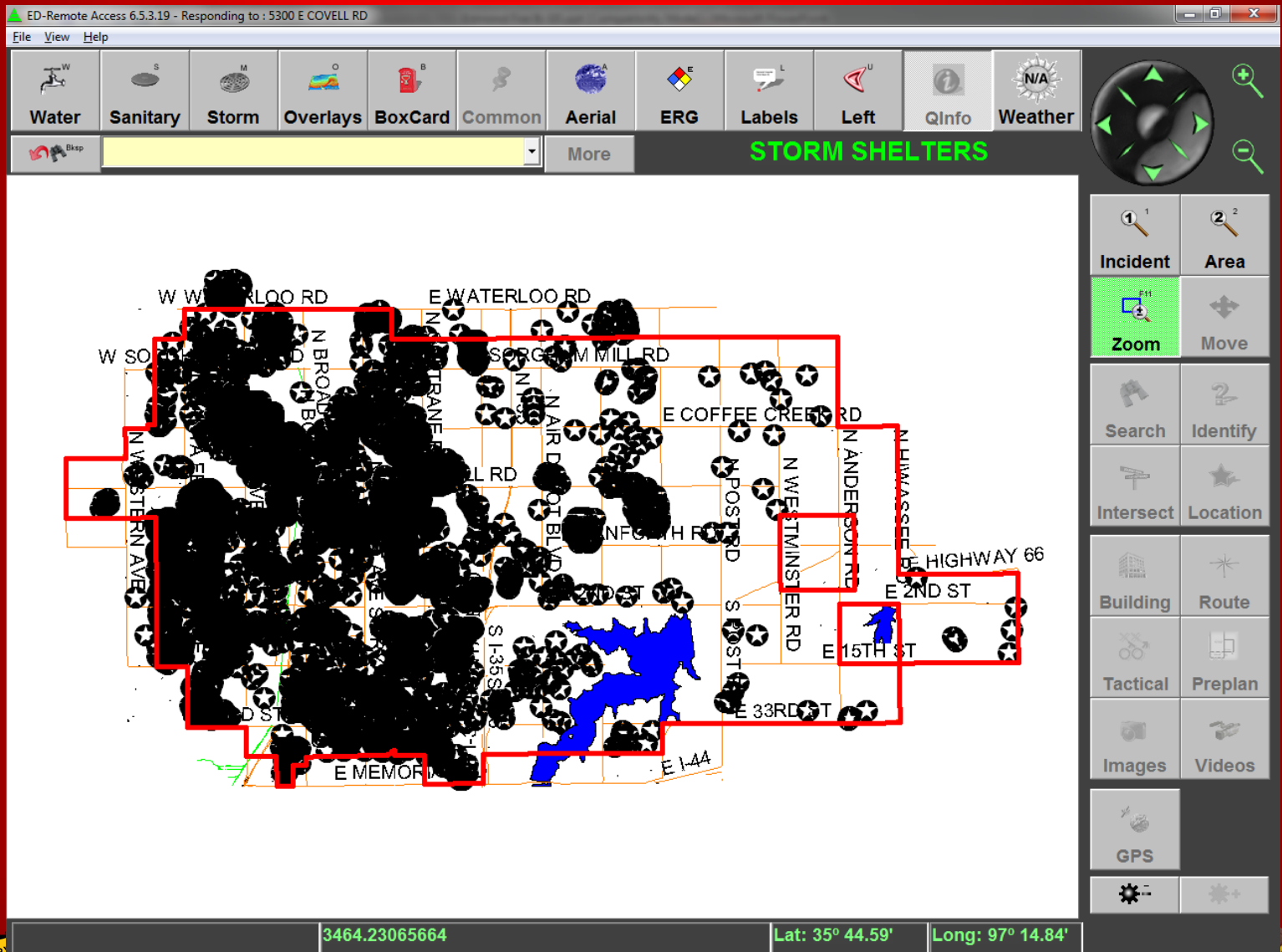
Remote Access - STORM SHELTERS Info

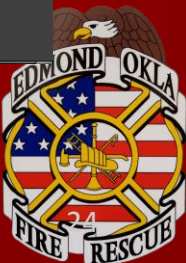
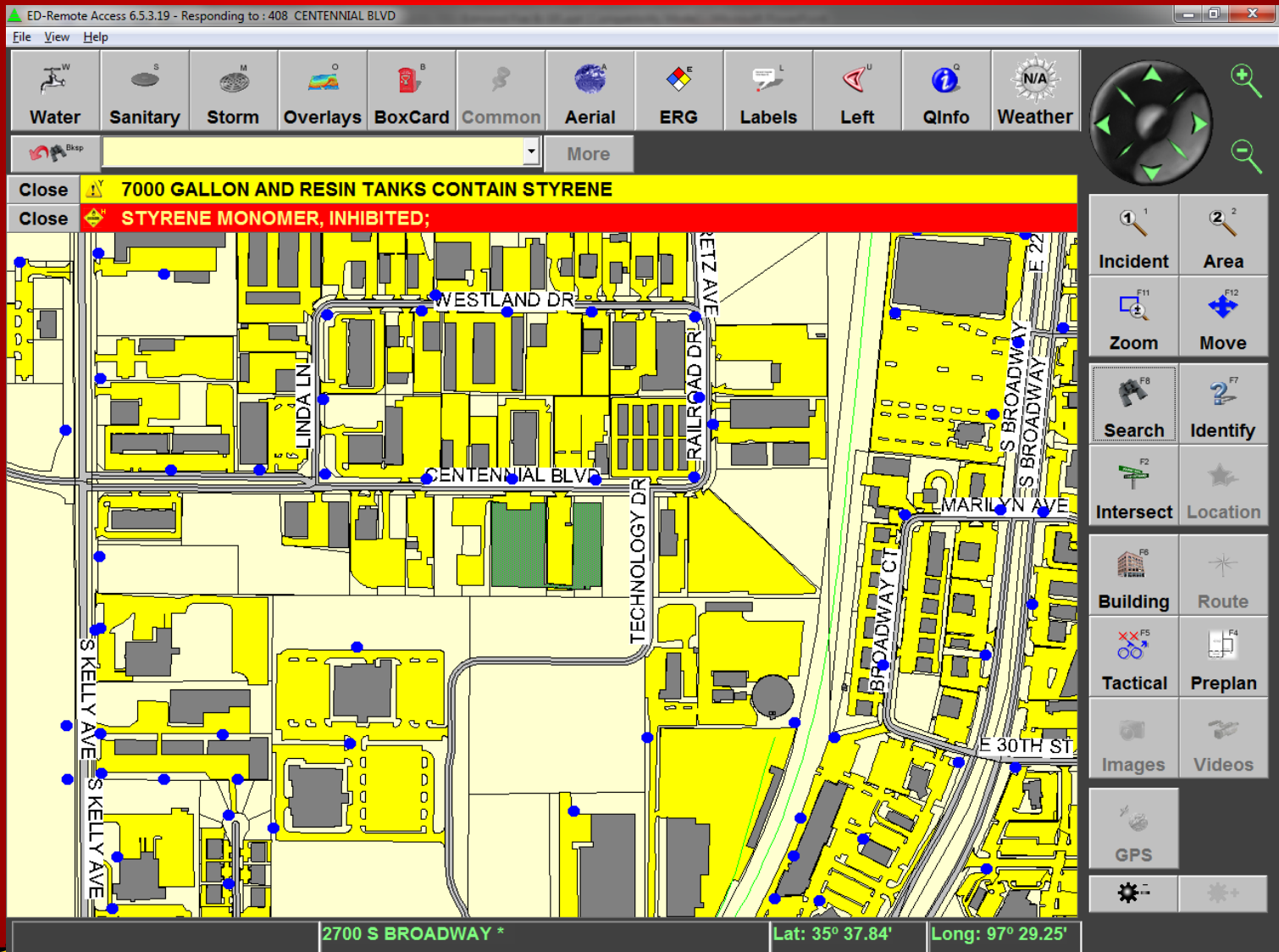
LOCATION	5809 Hardwick Ln
NAME	Ron & Andrea Cordell
TYPE	inground
SHELTER_LO	Garage
COMMENTS	
PHONE	(405) 513-5695
CELL_PHONE	(405) 249-3752
EMAIL	andrea.cordell@williams.com

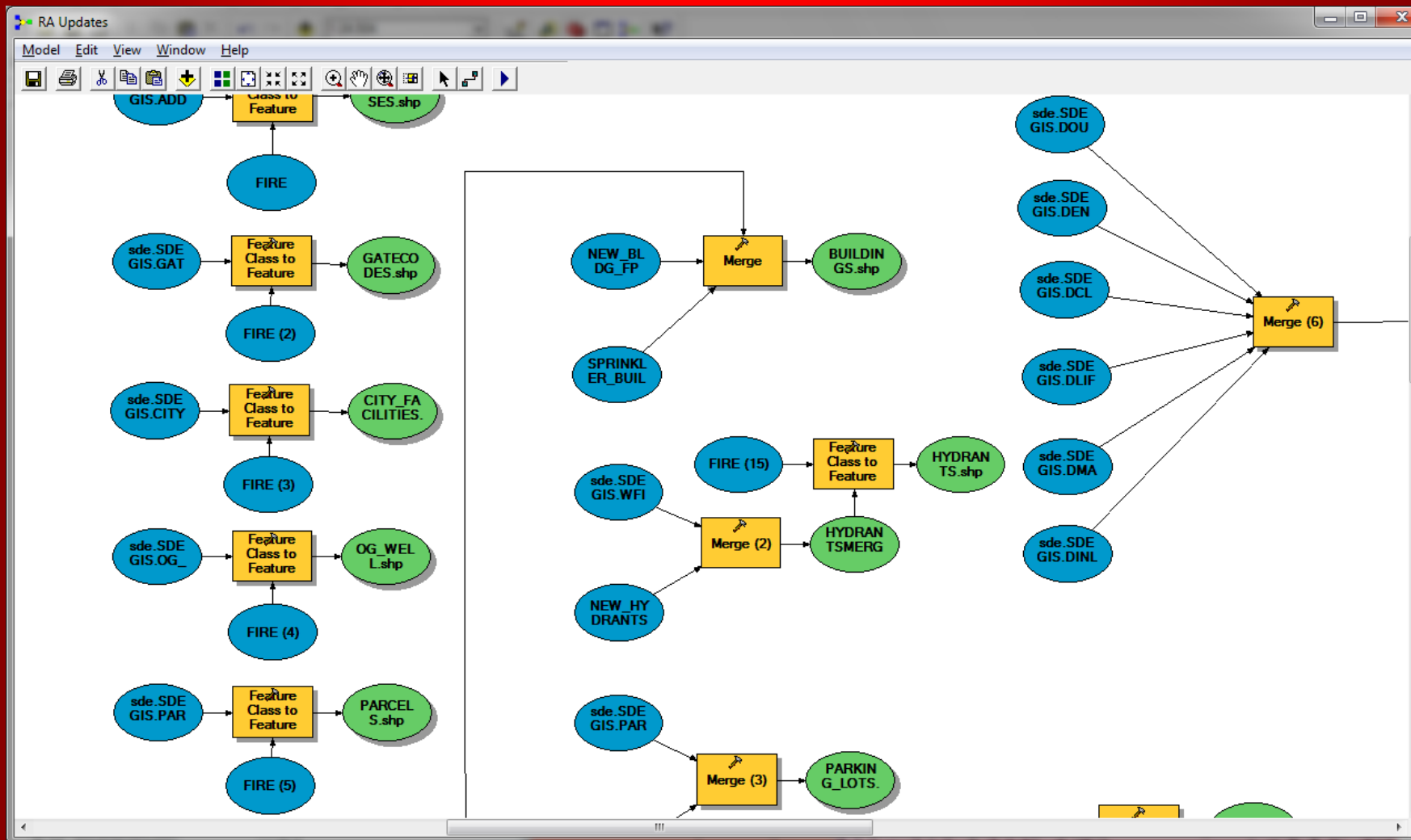
5809 HARE Long: 97° 24.55'

Incident Area
 Zoom Move
 Search Identify
 Intersect Location
 Building Route
 Tactical Preplan
 Images Videos
 GPS









SCAUG 2012



RA_Config - Profile and Configuration Utility

Profile Settings Profile Map Layers Profile Quick Info
System Configuration System Map Layers System Search Info

Select the map and image files you wish to make available for creating user profiles.

Map Layer: ADDRESS Layer Caption: ADDRESS

File Name: addresses.shp

File Type: Shape Theme Type: Point

MapName	Layer Caption	FileName	FileType	Sh
ADDRESS	ADDRESS	addresses.shp	Shape	Po
BIKE TRAILS	BIKE TRAILS	PAVEMENTLIN...	Shape	Lir
BRIDGE	BRIDGE	bridges.shp	Shape	Po
BUILDING	BUILDING	buildings.shp	Shape	Po
CITY FACILITIES	CITY FACILITIES	city_facilities.shp	Shape	Po
CITY LIMITS	CITY LIMITS	CITY_LIMIT.shp	Shape	Lir
GRID	GRID	grid_index.shp	Shape	Po
HYDRANT	HYDRANT	HYDRANTS.shp	Shape	Po
IMAGE	IMAGE	Edmond.sid	Image	Ot
INTERSECTIONS	INTERSECTIONS	intpts.shp	Shape	Po
LAKE	LAKE	LAKES.shp	Shape	Po
MAJOR ROADS	MAJOR ROADS	MAJORROADS...	Shape	Lir
OG-WELLS	OG-WELLS	OG_WELL.shp	Shape	Po
PARCEL	PARCEL	parcels.shp	Shape	Po
PARKS	PARKS	parks.shp	Shape	Po
PONDS	PONDS	PONDS.shp	Shape	Po
RAIL	RAIL	RAILROAD	Shape	Lir
RIVER	PARKING LOTS	PARKING_LOT...	Shape	Po
SANITARY MAI...	SANITARY MAI...	SEWER_LNS.shp	Shape	Lir

The list below includes the map and image files in the M:\RA\Map folder.

- addresses.shp
- bridges.shp
- BRIDGES2007.shp
- BUILDINGS.shp
- BUILDINGS2007.shp
- city_facilities.shp
- CITY_LIMIT.shp
- commonloc.shp
- Edmond.sid
- GATECODES.shp
- grid_index.shp
- HYDRANTS.shp
- HYDROLOGY.shp
- HYDROLOGYLINES.shp
- intpts.shp
- LAKES.shp
- MAJORROADS.shp
- OG_WELL.shp
- parcels.shp
- PARKING_LOTS.shp
- parks.shp
- PAVED_ROADS.shp
- pavement.shp
- PAVEMENTLINES.shp
- PONDS.shp
- railroad.shp

Double click the item in the list to edit the file settings. To delete a map file, click on the map file in the list and press the - button.

OK Cancel Apply

Select the Map Layer Name





SCAUG 2012

