

---

# **The State GI Council and OK Office of Geographic Information Coordination, Cooperation and Networking**

# GI Council and OGI

---

- Who Are We?
- What Do We Do?
- Why do We Do it?

# Creation of the State GI Council

---

- Authorized in 1994 by SB 722
  - ✓ Consisted of 11 member agencies and university representatives
  - ✓ Designated the OK Conservation Commission as the Chair of the Council
  - ✓ Original mission was to assist the Conservation Commission in the preparation of a strategy for the development of a statewide GIS and the submission of that strategy to the Legislative leadership

# Creation of the State GI Council

---

## ➤ HB 1964 in 1995

- ✓ Added three additional members to the Council
  - State Finance, OK Tax Commission, Regional Universities
- ✓ Created Digital Orthophoto Base Mapping Fund

## ➤ Amendment in 2001

- ✓ Added additional member to the Council
  - OK Wildlife Conservation Commission

# Changes to the State GI Council

---

- Legislative Interim Study H2003-105
  - ✓ Presented December 4, 2003
  - ✓ Issues for Consideration
    - Add Public Safety/County/Local Members
    - Designate a State-wide Coordinator
    - Authority to Set Policy & Standards

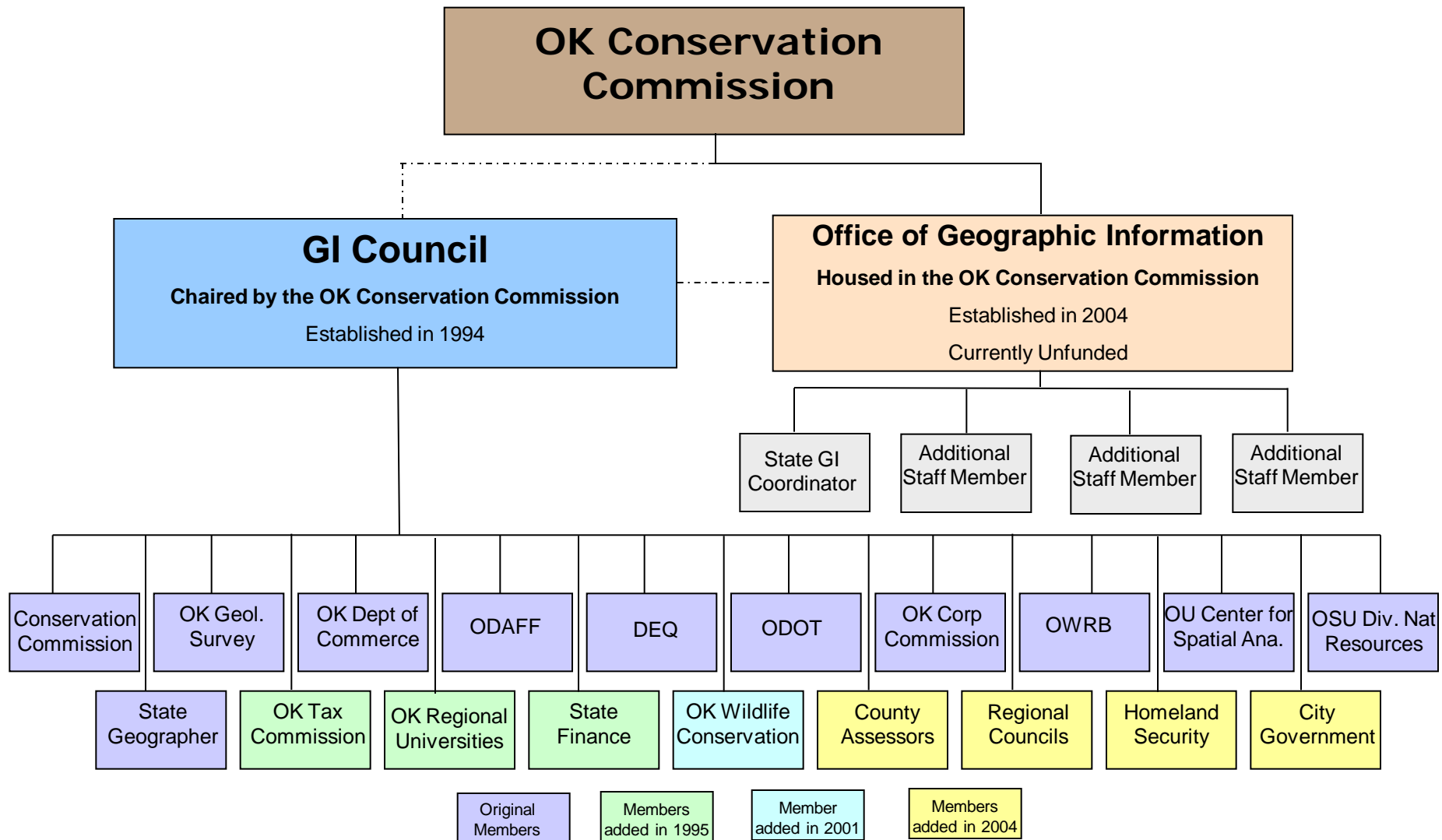
# Changes to the State GI Council

---

## ➤ HB 2457 in 2004

- ✓ Changed the name from State GIS Council to State GI Council
- ✓ Added 4 new members to the Council
  - Homeland Security, County Assessors, City Government, OK Association of Regional Councils
- ✓ Specified Duties for the Council
- ✓ Created the Office of Geographic Information
  - Specified Duties for the Office
- ✓ Created the State Geographic Information Coordinator Position

# Structure of the State GI Council



# Goals of State GI Council

---

- Reduce Duplication of Efforts
- Enhanced Homeland Security
- Awareness of Available Data
- Data Works Across Jurisdictional Lines
- Data Reliability
- Agency Coordination & Involve More People
- Cost Savings to Taxpayers



# Activities of the State GI Council

---

- Monthly Meetings
  - ✓ April 4, 2014
    - ✓ New Online Viewing Options
      - ✓ <http://www.okmaps.onenet.net/meetings.htm>
- GIS Day at the Capitol
  - ✓ March 27, 2014
- GI Council Website
  - ✓ [www.okmaps.onenet.net](http://www.okmaps.onenet.net)
- OK GIS List Serve (In Cooperation with CSA)
  - ✓ [www.csa.ou.edu](http://www.csa.ou.edu)
- Address Standards
  - ✓ In progress

# Office of Geographic Information

---

- Office and State Coordinator Position  
Currently Unfunded
- Volunteer Staff
  - ✓ Currently Staff of 2
- Projects include:
  - ✓ Strategic Plan Grant completed in 2007
  - ✓ Serving up NAIP Photography (in cooperation with CSA)
  - ✓ Homeland Security Grant
  - ✓ Oklahoma Broadband Mapping Grant
  - ✓ State IMT and OEM Response
  - ✓ E-911 Collaboration Project

# NAIP Photography

---

- Available for Download on FTP Site
  - Data Available Includes
    - ✓ 1 meter Full Color Leaf On
      - 2003 – 2005, 2008, 2010, 2013
    - ✓ 2 meter Full Color Leaf On
      - 2006

<ftp://ftp.okcc.state.ok.us/gis/County/>

# OKMAPS

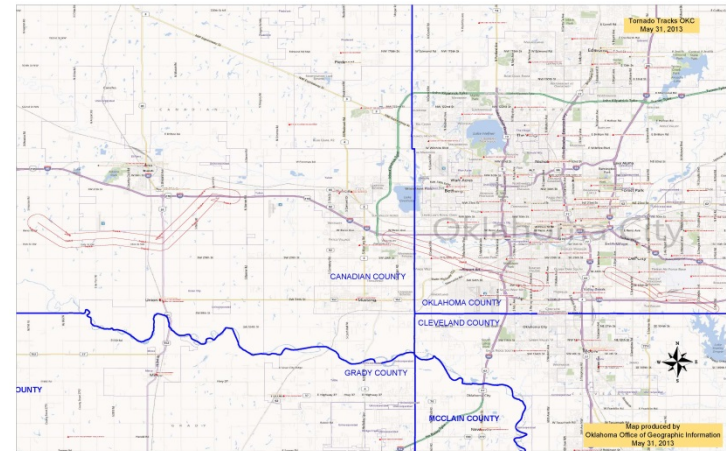
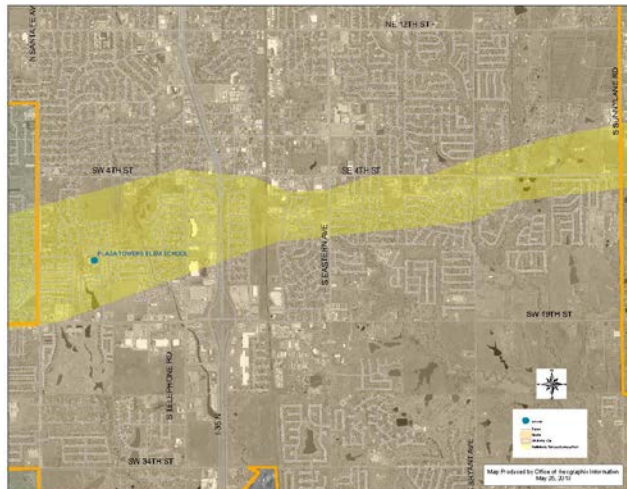
---

- Funded by OK Dept of Homeland Security
- On Line Mapping Application for Public Use
  - Allows Viewing and Downloading of Data
  - Secure Log In for Sensitive Data

<http://ogi.state.ok.us/ogi/search.aspx>

# Moore/ El Reno Tornado Response

- Provided GIS services during the May Severe Weather Outbreak
  - Moore:
    - Provided GIS Services in Incident Command
  - El Reno:
    - Provided GIS Services to Emergency Management



# E-911 County Collaborative Effect

---

- E-911 Initiative to Make Data Available
  - 9 Counties in Southern Oklahoma
  - Using OKMAPS to host Data
    - Data Available over the Web
    - Secure Login
    - No cost to Counties

<http://ogi.state.ok.us/ogi/search.aspx>

# Questions

---

For More Information

Shellie Willoughby

OK Conservation Commission  
Office of Geographic Information

[Shellie.willoughby@conservation.ok.gov](mailto:Shellie.willoughby@conservation.ok.gov)